

The LGA's productivity offer

Helping councils to save money
and generate income



The LGA offers support to help your council become more efficient, save money and generate income.

Behavioural Insights programme

Behavioural insights is a technique used to generate better outcomes for communities by encouraging behaviour change. The LGA wants to build an evidence base of what works and is looking to share the cost of trials with interested councils in service areas where this technique has not been widely applied, for example, housing, adult social care and domestic violence.

Contact:

rhian.gladman@local.gov.uk

Care and health efficiency

The project aims to help councils develop innovative, efficient and sustainable approaches to care and health services. Councils in the Care and Health Improvement Programme (CHIP) efficiency project focus on one or more areas identified through consultation with local government, including commissioning and market shaping, integration and managing demand.

Built on the approach and learning from previous LGA efficiency programmes, including the adult social care efficiency programme and work looking at efficiency opportunities through integration, the first 10 participating councils will share emerging lessons and compile evidence for local government to draw on.

Contact:

amanda.whittaker-brown@local.gov.uk

Commercialisation

A large number of councils are now thinking through a more commercial approach to their activities – and being councils of course, that also means ensuring better outcomes for their citizens.

Visit www.local.gov.uk/commercialisation to access case studies, information on trading powers and further LGA support on this important area for councils.

Contact:

rhian.gladman@local.gov.uk



Commissioning Academy

Jointly developed by the LGA and Cabinet Office councillors involved in the commissioning of services can develop their skills in this role. Aimed at leaders, portfolio holders and chairs of scrutiny, these sessions will help councillors explore ways to improve the commissioning activity of their councils through political leadership.

Contact:

grace.collins@local.gov.uk
to book your place.

Housing Advisers Programme

The new Housing Advisers programme will support councils to deliver a project to meet their local housing needs: delivering homes, reducing homelessness, or generating revenue or savings. Councils can apply for 20 days of bespoke expert support from an independent adviser. It aims to be simple, flexible, and locally-led.

Contact:

nick.porter@local.gov.uk

The LGA's Productivity Experts programme has contributed to £140 million savings for councils to date

National Procurement Strategy

Launched in 2014 the strategy outlines what councils should be doing in four main themes; making savings, supporting local communities, leadership and modernisation. A new version will be available from 2018.

Category strategies in construction, energy, ICT and social care, as well as **procurement tools, templates, case studies and guidance** are available at:

www.lg-procurement.org.uk

Contact:

tina.holland@local.gov.uk



One Public Estate (OPE)

The OPE programme supports councils, central government and wider public sector asset holders to develop and deliver projects that improve local services and economies. With over three quarters of councils on the programme, OPE projects are forecasted to deliver: 44,300 new jobs, 25,000 new homes, £98 million in reduced running costs, and raise £415 million in capital receipts. The programme will be expanded in 2017/18 with a further round of funding.

Contact:

brian.reynolds@local.gov.uk

To keep up-to-date with available support visit our website:
www.local.gov.uk/productivity

Productivity experts

So far over 70 councils have been given the funds to enable them to engage an expert to support them to realise ambitious efficiency savings or generate significant income. For example, Shropshire County Council identified £6 million of achievable savings in children's services between 2016 and 2019.

Contact:

productivity@local.gov.uk

Shared services map and match making service

View our interactive map to find out more about the 488 shared service arrangements already in place, together contributing to £619 million of efficiency savings. The map aims to help councils learn about and identify what shared service arrangements councils are involved in before embarking on projects of their own.

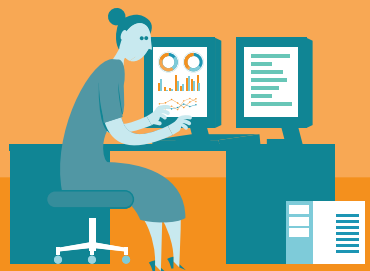
With our new match making service we can help connect your council with others wishing to start a new shared service and/or assist in enlarging existing shared service arrangements. The offer includes access to funding for a dedicated shared service expert.

Contact:

sharedservices@local.gov.uk

£3.6bn

The combined project capital value of a schools benchmarking study to which 107 councils contributed in 2017



Transforming local public services, using technology and digital tools and approaches

In March 2015 the LGA funded 27 Digital Expert council led projects to use digital tools and solutions to redesign and improve access to council services. Benefits generated from these projects included over £2 million in savings and £0.5 million in income.

In March 2016, we funded 15 council led projects to use digital tools and approaches to support their work on national programmes of transformation including Troubled Families, the integration of health and social care and welfare reform.

In March 2017, we funded a further 23 council led projects to help get more services online and/ or help their communities access services online.

A list of all the funded projects is available.

We have also set up the Local Government Cyber Security Stakeholder Group, bringing together sector organisations with government and the National Cyber Security Centre to help highlight cyber security good practice and advice.

Contact:

siobhan.coughlan@local.gov.uk

www.local.gov.uk/our-support/efficiency-and-income-generation/digitalisation





Local Government Association

Local Government House
Smith Square
London SW1P 3HZ

Telephone 020 7664 3000

Fax 020 7664 3030

Email info@local.gov.uk

www.local.gov.uk

© Local Government Association, June 2017

For a copy in Braille, larger print or audio,
please contact us on 020 7664 3000.
We consider requests on an individual basis.

REF 11.52