

Building a Recovery Plan Through the UN Sustainable Development Goals

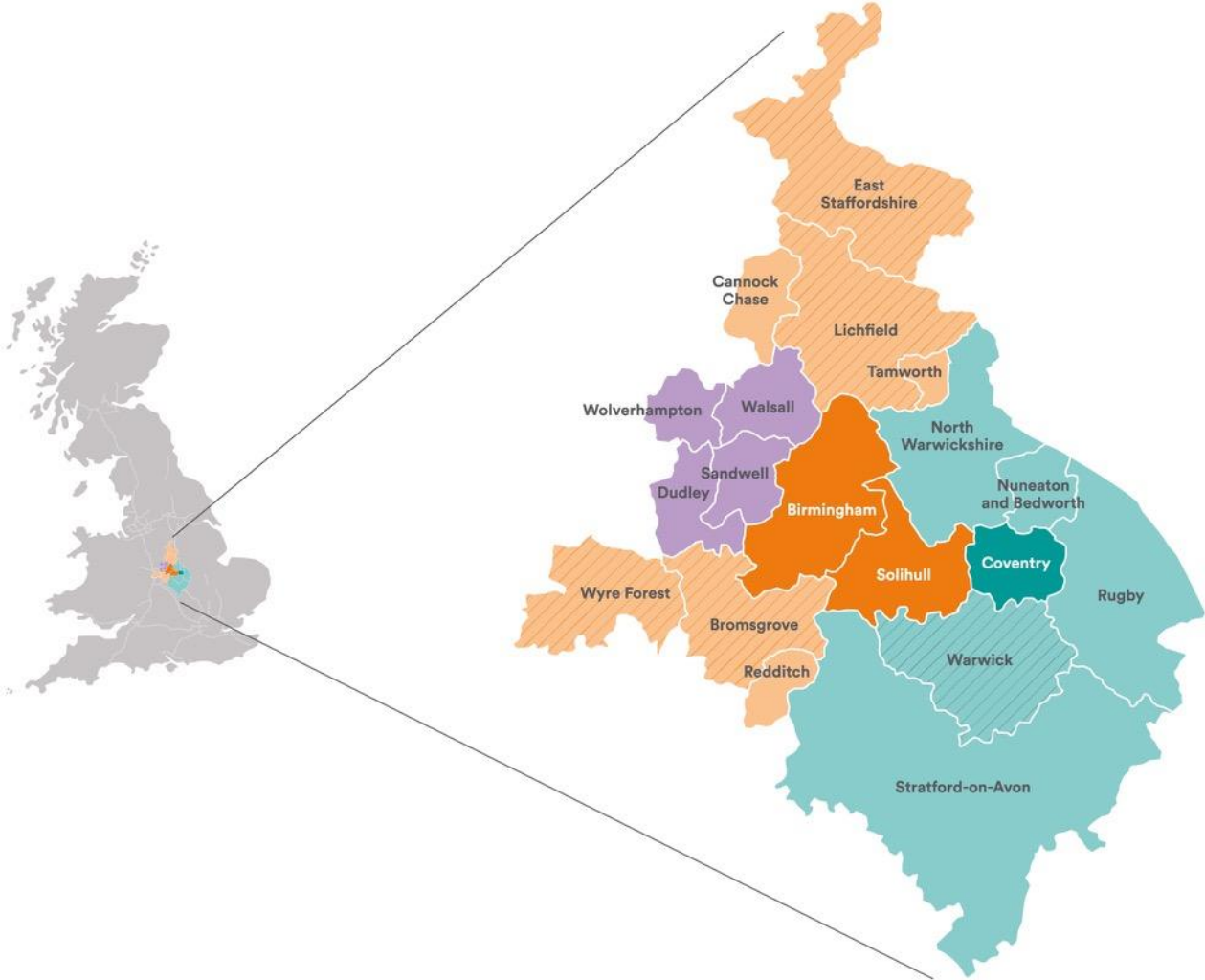
12th February 2021



West Midlands
Combined Authority

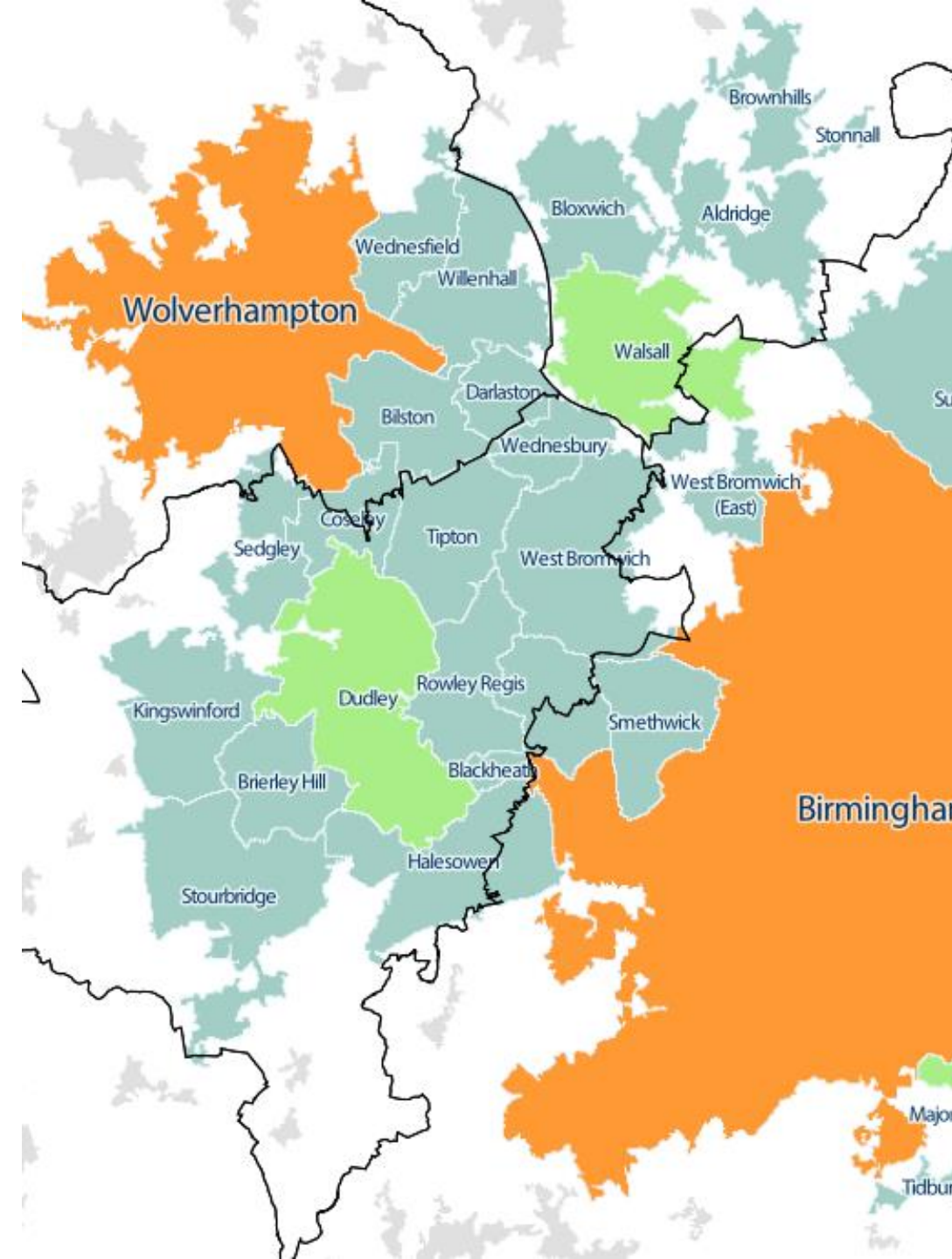
Delivering inclusive growth

West Midlands Combined Authority



SDGs and Economic Policy

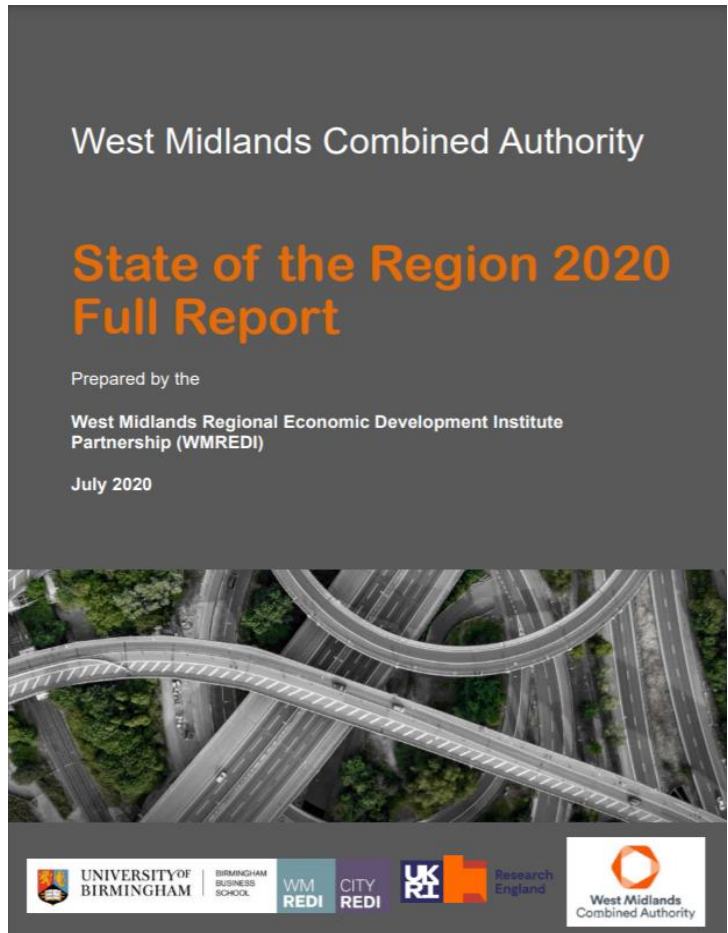
- There should be a **purpose** to economic activity
- ‘People, place, business’ default
- Focus on the outcome not the language





Case Studies

Using the SDGs to frame
policy and evidence



June 2020

State of the Region Report

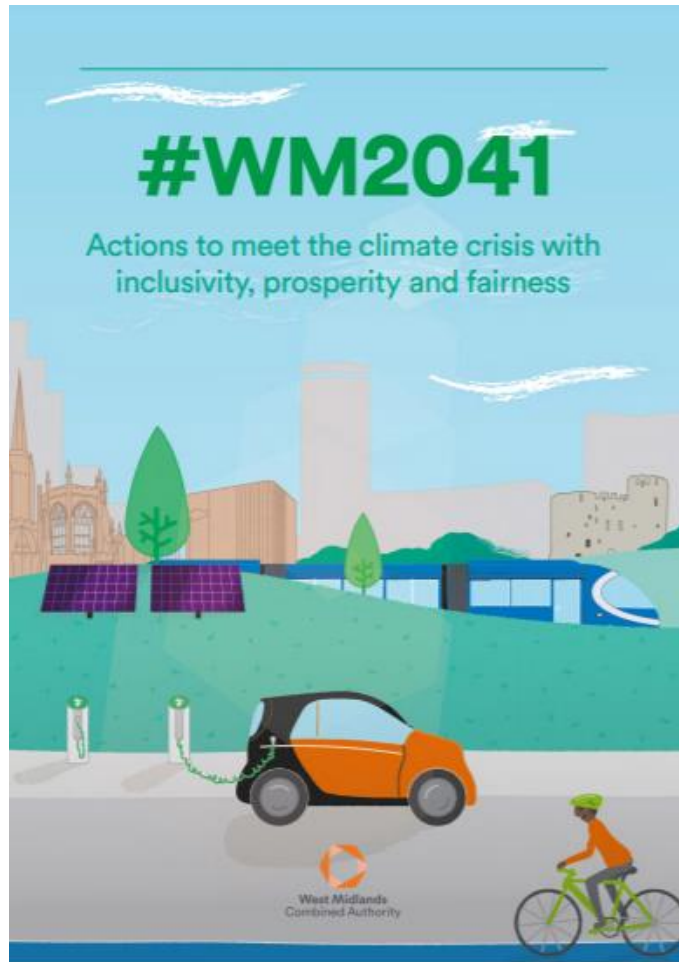
- Fourth annual report, first one to focus on SDGs
- Complemented by a weekly economic monitor
- It is a stock take of where the region stands
- It highlights where we are doing well and where we need to work together to improve the region

Challenges

- Not all indicators translate below a national footprint
- Evidence against cross-cutting SDGs is often fragmented
- ‘Business as usual’ is often overlooked in our contributions to SDGs

SDGs **not** measured





Approved June 2020

A Zero Carbon WMCA by 2041

Staying within a cumulative carbon dioxide emissions budget of 126 million tons (MtCO₂) for the period of 2020 to 2100.

A West Midlands target of net-zero emissions **no later than 2041**, with interim targets based on a 2018 baseline of 36% reduction by 2022, and 69% reduction by 2027, supported by the corresponding carbon budgets was set.

Both Solihull and Birmingham are aiming for net zero carbon by **2030**.

Goals and Principles



Alignment with the UN Sustainable Development Goals

- Investing in mitigating and adapting to climate breakdown is essential for the future of the WMCA region.
- The WMCA is committed to a model of **inclusive growth** which judges economic activity by the quality of its outcomes for people and place, aligned with UNSDGs.
- Unite people across the region by creating common cause and **addressing inequalities**



- Make space for **sustainable transport**



- Invest in **comfortable homes and buildings**



- Build wealth, and recycle it throughout the region through **skills and community ownership**



Considerations

- Focus on shared goals not language
- Establish the SDGs that resonate with your places and communities
- Use the SDGs to develop a sense of community





ANNIE KEHOE

Senior Policy Officer, Strategy and Economy



annie.kehoe@wmca.org.uk