

Health inequalities & the unequal impacts of the pandemic

Louise Marshall, Senior Public Health Fellow

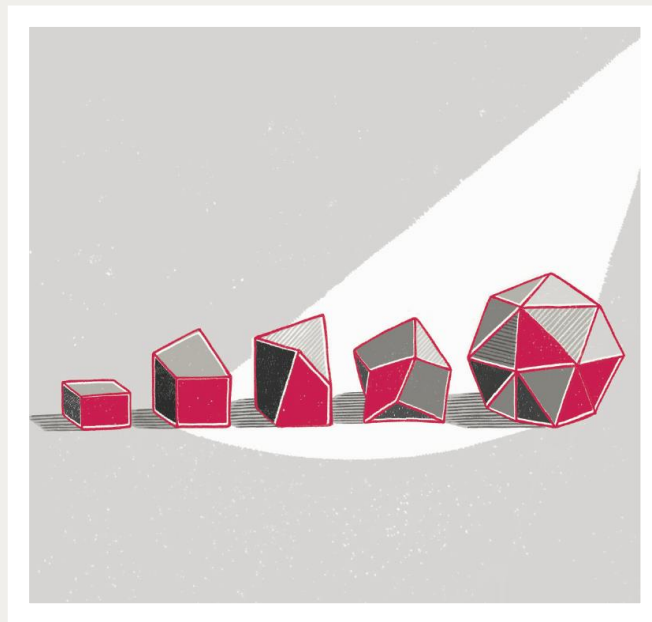
15 September 2020



About us

The Health Foundation is an independent charity committed to bringing about better health and health care for people in the UK.

We connect what works on the ground with effective policymaking and vice versa.

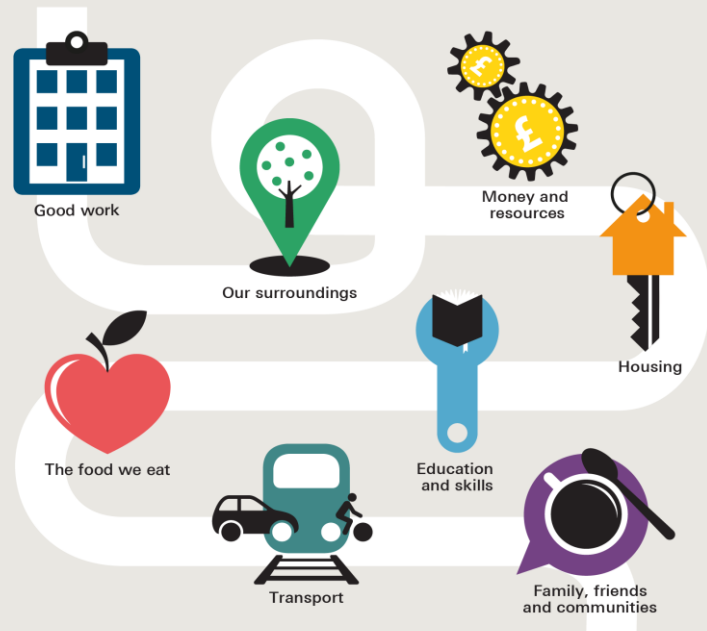


We shine a light on
how to make successful
change happen

What makes us healthy?

Good health matters, to individuals and to society. But we don't all have the same opportunities to live healthy lives.

To understand why, we need to look at the bigger picture:



The healthy life expectancy gap between the most and least deprived areas in England is over **18** YEARS

Find out more: [health.org.uk/what-makes-us-healthy](https://www.health.org.uk/what-makes-us-healthy)

Quick guide

March 2018

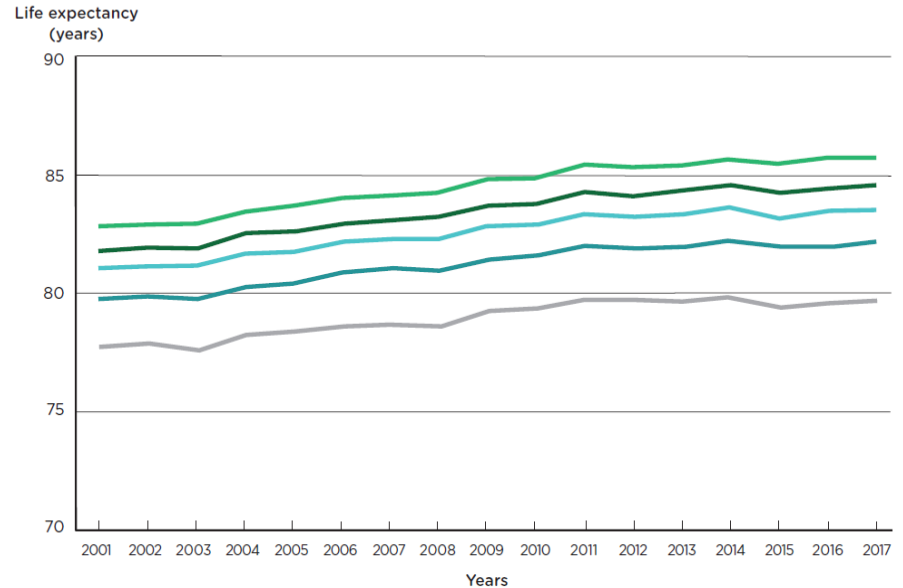
What makes us healthy?

An introduction to the social determinants of health

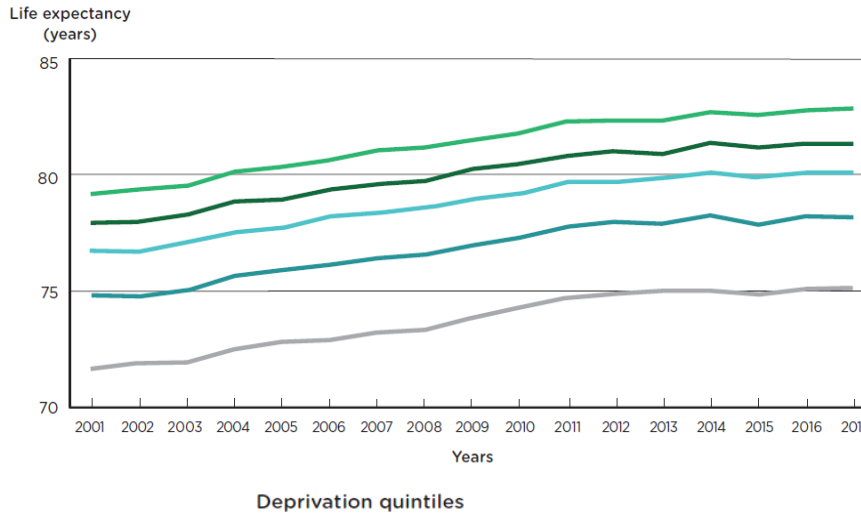
Health inequalities before the pandemic

Life expectancy at birth (England, 2003-05 to 2015-17)

b) Females



a) Males

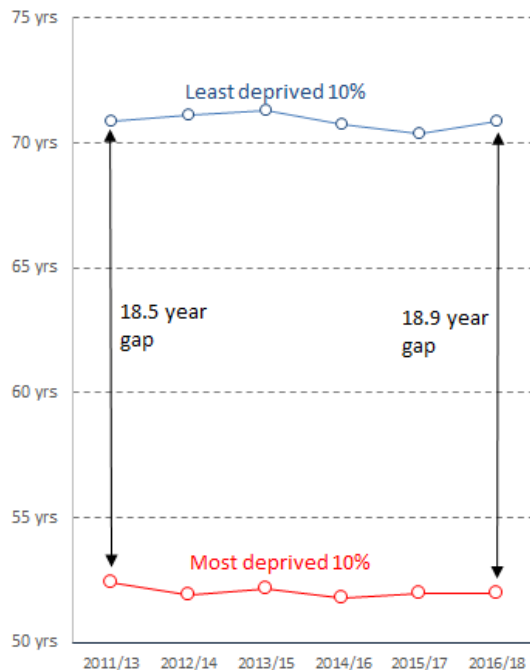


- Least deprived
- Second least deprived
- Middle deprived
- Second most deprived
- Most deprived

Inequality in healthy years of life

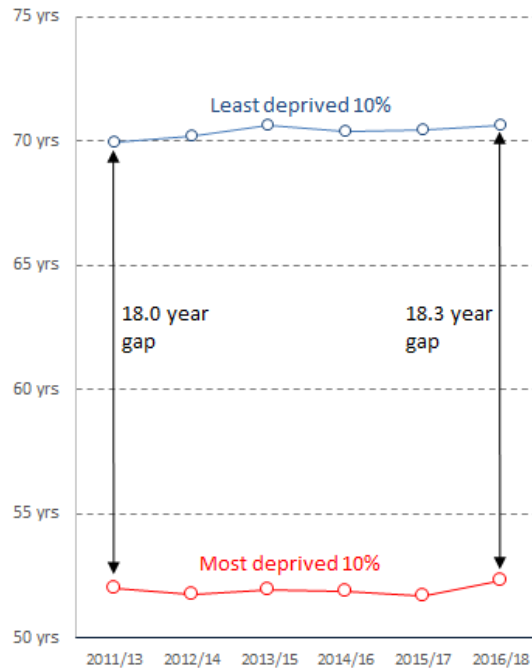
Healthy life expectancy, England: 2011/13-16/18

Women (years at birth)



Source: ONS, Health State Life Expectancies by deprivation decile

Men (years at birth)



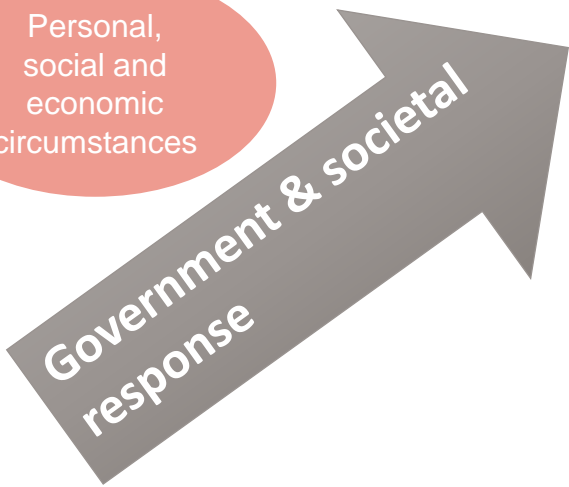
England, 2011/13-2016/18

Unequal impacts of the pandemic



Existing health and health inequalities

Personal, social and economic circumstances



Health Impacts

- Exposure to COVID-19
- Risk of serious COVID outcome
- Mental health harm
- Delayed treatment of other conditions

Social and economic impacts

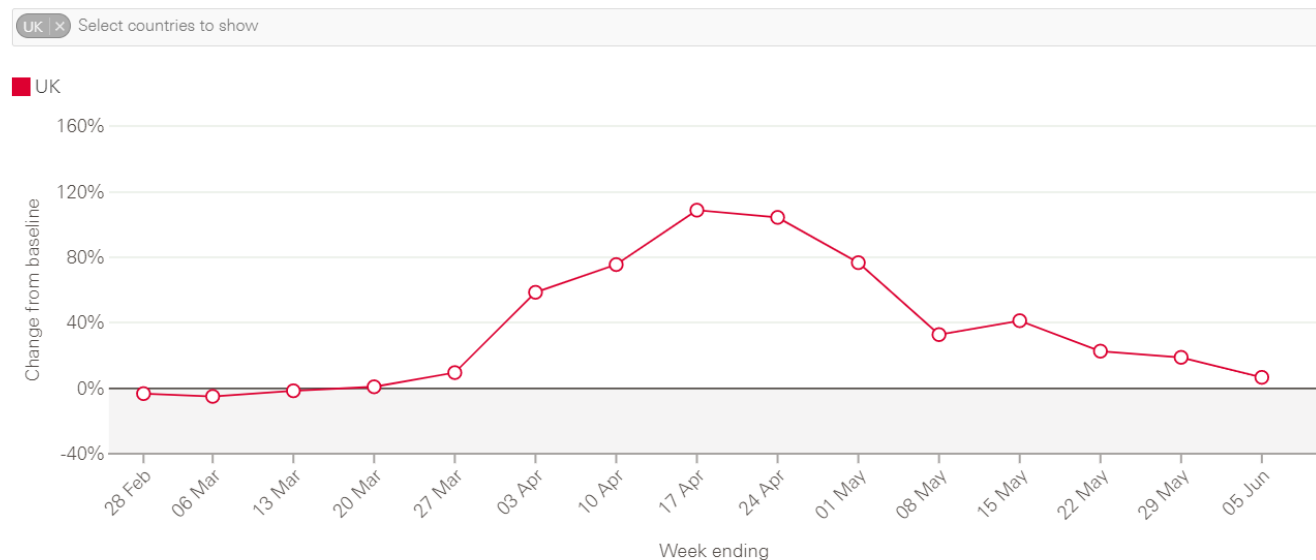
- Economic hardship
- Disrupted education and careers
- Community cohesion

Future health and health inequalities

Health impacts of the pandemic: mortality

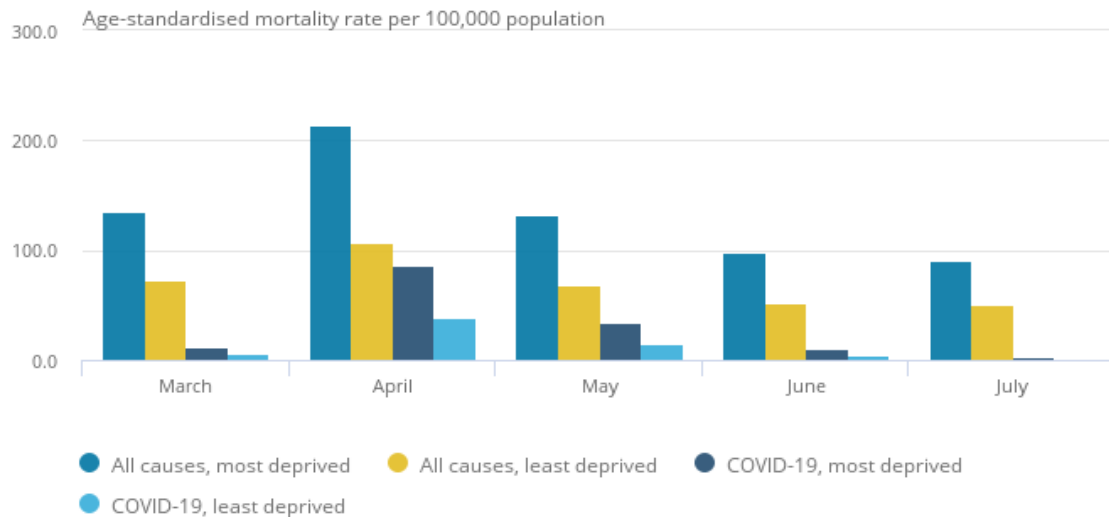
Weekly excess deaths for selected European countries

Change from baseline weekly deaths, by week, 2020



Health impacts of the pandemic: deprivation

Age-standardised mortality rates, all deaths and deaths involving the coronavirus (COVID-19), Index of Multiple Deprivation, England, deaths occurring between 1 March and 31 July 2020



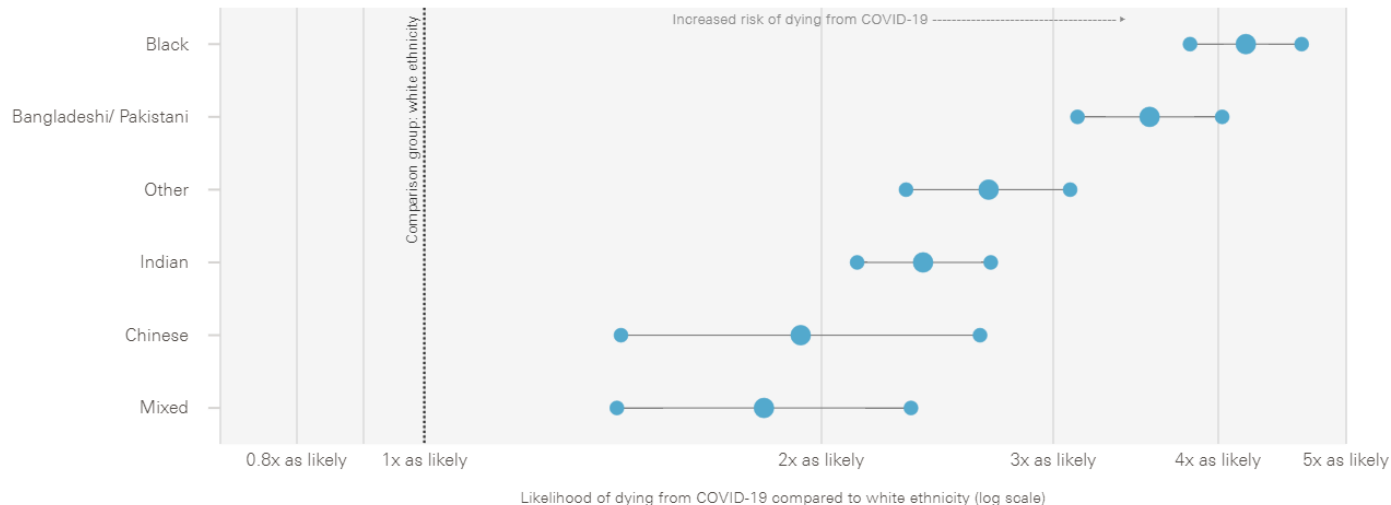
Source: Office for National Statistics – Deaths involving COVID-19 by local area and socioeconomic deprivation

Health impacts of the pandemic: ethnicity

The risk of COVID-19 related death is more than four times as high for people of black ethnicity than for those of white ethnicity after adjusting for age

Risk of COVID-19-related death by ethnic group and sex, England and Wales, 2 March to 10 April 2020.

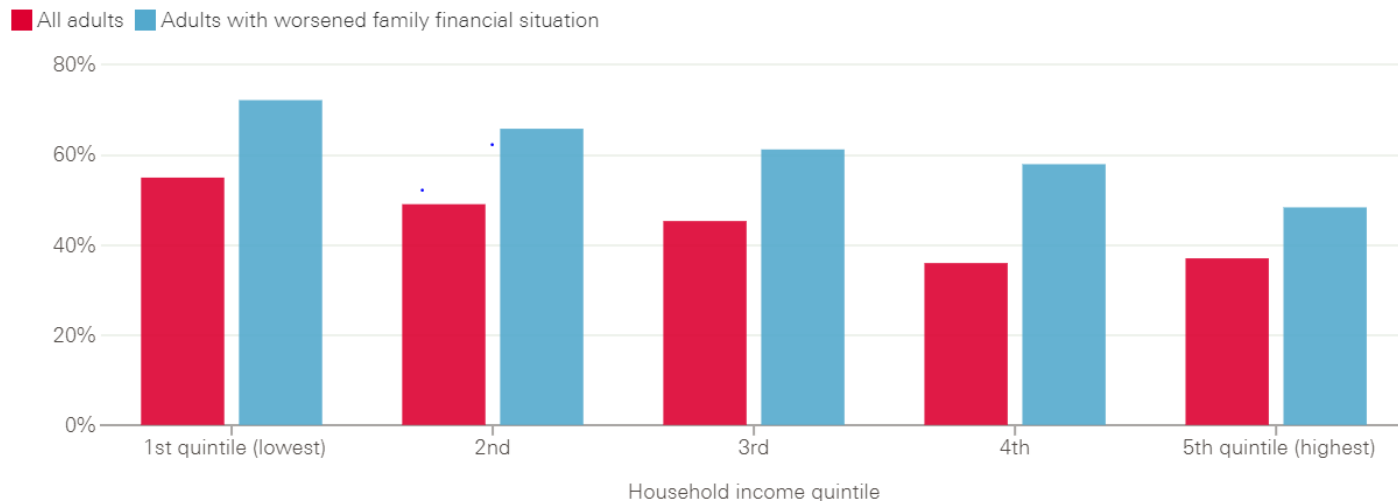
Men



Health impacts of the pandemic: income

Poor mental health by income and change in financial situation

Share of population with poor mental health by 18–65-year-old family income quintile before COVID-19 (exc. retired and students): UK, 6–11 May 2020



COVID-19 Impact Inquiry

More on the inquiry

- **Advisory panel chair:** Clare Moriarty
- **Launch:** October 2020
- **Report:** Summer 2021
- **Aim:** A comprehensive synthesis of the evidence to date considering:
 - how people's experience of the pandemic was influenced by their health and existing inequalities
 - the likely impact of actions taken in response to the pandemic on people's health and health inequalities – now and in the future.
- **More info and sign-up:** <https://www.health.org.uk/what-we-do/a-healthier-uk-population/mobilising-action-for-healthy-lives/inquiry-into-covid-19-health-and-health-inequalities>

Thank you

Louise.Marshall@health.org.uk

<https://www.health.org.uk/what-we-do/responding-to-covid-19>

