

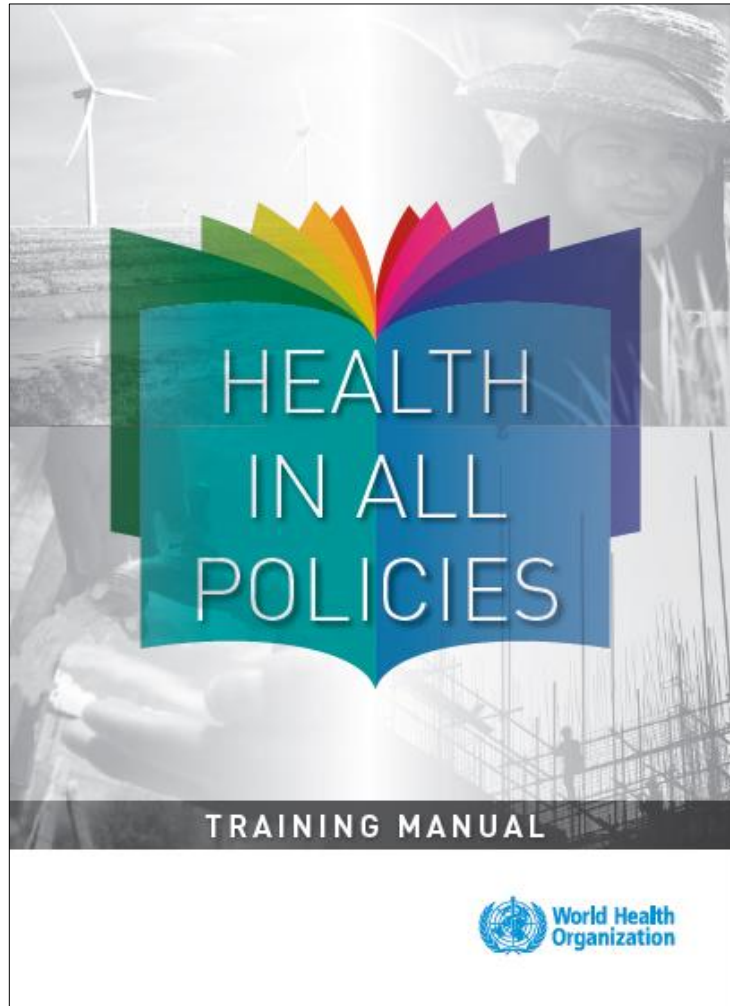
# Health in all policies

*The concept of Health in All Policies  
A councillor's workbook on Health in All Policies and COVID-19  
Liverpool City Region Wealth and Wellbeing Programme*

*Alan Higgins  
@PublicHealthAH  
Alanhiggins21@gmail.com*

15 September 2020

# Introduction to Health in All Policies (HiAP)



Health in All Policies strongly advocated by World Health Organisation – and adopted worldwide

*"An approach to public policies across sectors that systematically takes into account the health implications of decisions, seeks synergies, and avoids harmful health impacts in order to improve population health and health equity."*

WHO Helsinki Statement on HiAP 2013

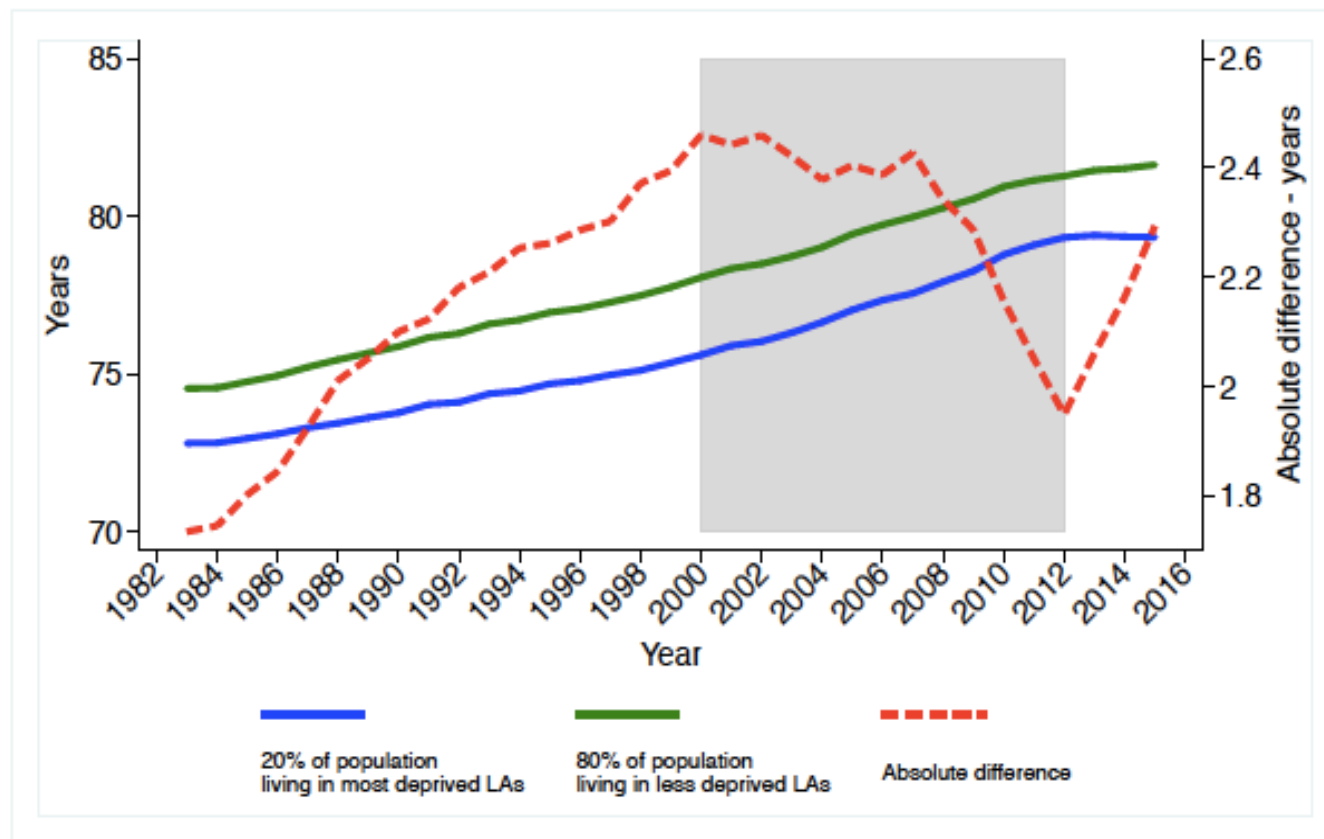
## The key benefits of a HiAP approach

- Promote health, equity and sustainability
- Support inter-sectoral collaboration
- Benefit multiple partners
- Evidence that partnerships work
- Engage stakeholders
- Create structural or procedural change to embed tackling health inequalities
- Develop common monitoring & evaluation tools

*Health in All Policies: a manual for local government LGA 2016*

---

The gap in life expectancy narrowed during the strategy period (and is now widening).



Trends in life expectancy in the most deprived Local Authorities and the rest of England and the absolute difference 1983-2015.

# **A councillor's workbook on Health in All Policies and COVID-19**

Introduction – Health in All Policies and COVID-19	4
Emerging key issues for leading members	6
Recap of the Health in All Policies approach	8
COVID-19 and health inequalities	15
Impact of the virus	15
Impact of the pandemic response	16
What has been the impact of COVID-19 in your borough	18
Response of local government to COVID-19	19
Health in All Policies and recovery planning	20



# Liverpool City Region Wealth and Wellbeing Programme

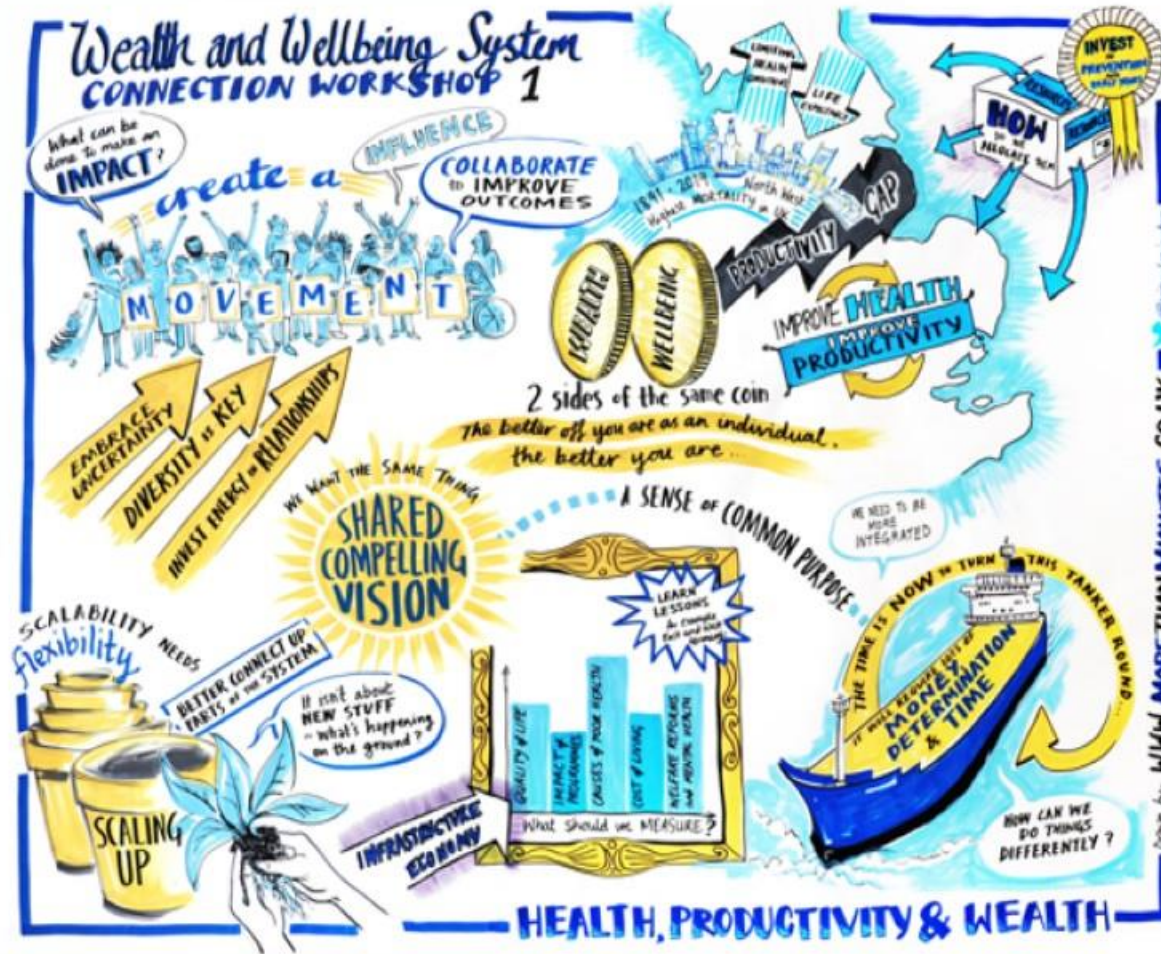
# What we did 2018 to 2020

- ▶ Provided evidence that economic productivity is linked to the economy in LCR and claimed a place in the Local Industrial Strategy
  - ▶ 33% of productivity gap attributable to ill health
- ▶ Engaged widely with public sector, voluntary sector and communities on economics and health
  - ▶ Six plus one workshops, qualitative research
- ▶ Built an evidence base on actions – lit. review and consultation
- ▶ Created a narrative based on views of people unable to work through ill health
- ▶ Proposed a plan focussed on three points
  - ▶ Employment support programmes
  - ▶ Reform to the workplace
  - ▶ Wellbeing economics



# System connection Workshops

- ▶ 6 Themes
- ▶ Creating connections across the region
- ▶ Sharing of ideas
- ▶ Making the case in a collaborative way



# Key message and where next

AN ECONOMY THAT FUNCTIONS EFFECTIVELY FOR EVERYONE IS BETTER FOR HEALTH AND WELLBEING AND A POPULATION WITH BETTER HEALTH AND WELLBEING IS BETTER FOR AN EFFECTIVE AND FAIR ECONOMY.

## NEXT

- DEVELOP A JOINT APPROACH TO REFORM OF ECONOMIC PLANNING THAT COMBINES AND PRIORITISES ENVIRONMENTAL, SOCIAL AND HEALTH OUTCOMES WITH INCLUSIVITY
- DEVELOP THE SHARING AND NETWORKING OF COMBINED AUTHORITIES LEADING ON ECONOMICS AND HEALTH LINKED TO A DEVELOPING PUBLIC HEALTH ROLE
- RECORD OUR EXPERIENCE AND FINDINGS TO FURTHER DEVELOP THE PUBLIC HEALTH AGENDA ON ECONOMICS AND HEALTH.