

Salford City Council

# Biodiversity Net Gain in Salford – progress so far and lessons learnt

Fiona Fryer

Principal Planning Officer



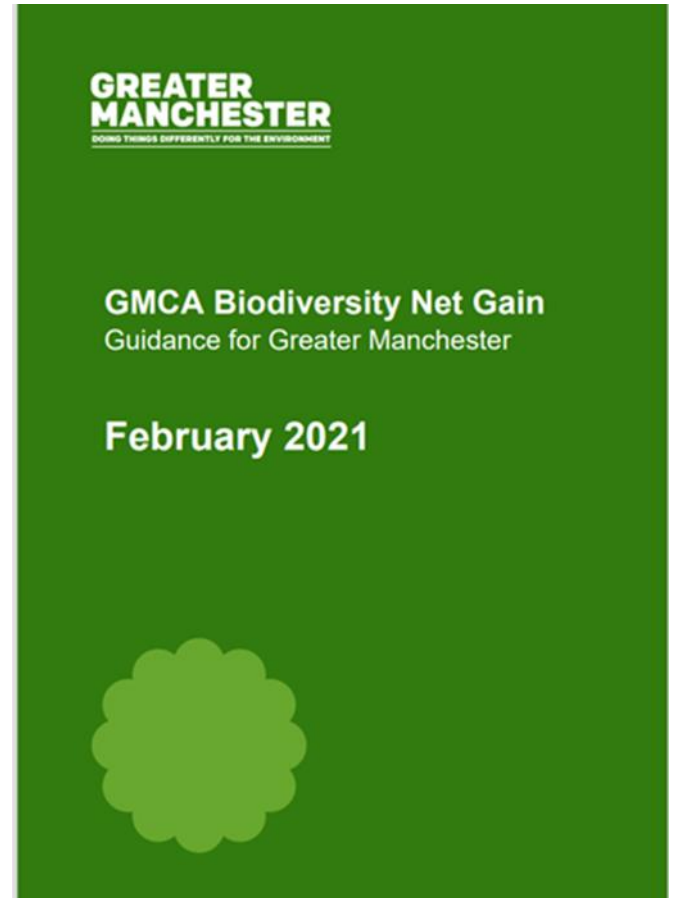
# Outline

- Greater Manchester Context
- Development of Local Plan policy
- Implementation & Reflections



# Work at a Greater Manchester Level

- Greater Manchester BNG Task Group – a range of public sector partners with consultancy support
- Early engagement with all ten councils – development management and policy planners
- Draft guidance BNG produced 2019, final guidance published 2021
- Ongoing work on BNG and Nature Recovery
- Training sessions for officers and politicians



For more details of the Greater Manchester BNG Guidance (including useful diagrams) see

<https://www.greatermanchester-ca.gov.uk/what-we-do/environment/natural-environment/biodiversity-net-gain/>

# A fairer city Salford's Local Plan

- Aims to create a better and fairer Salford for all – central to everything the local plan is seeking to accomplish
- Ensure development is genuinely sustainable (support economic, social and environmental objectives)
- Sets out strategic objectives for the city over the long term



**A fairer city**

Salford City Council

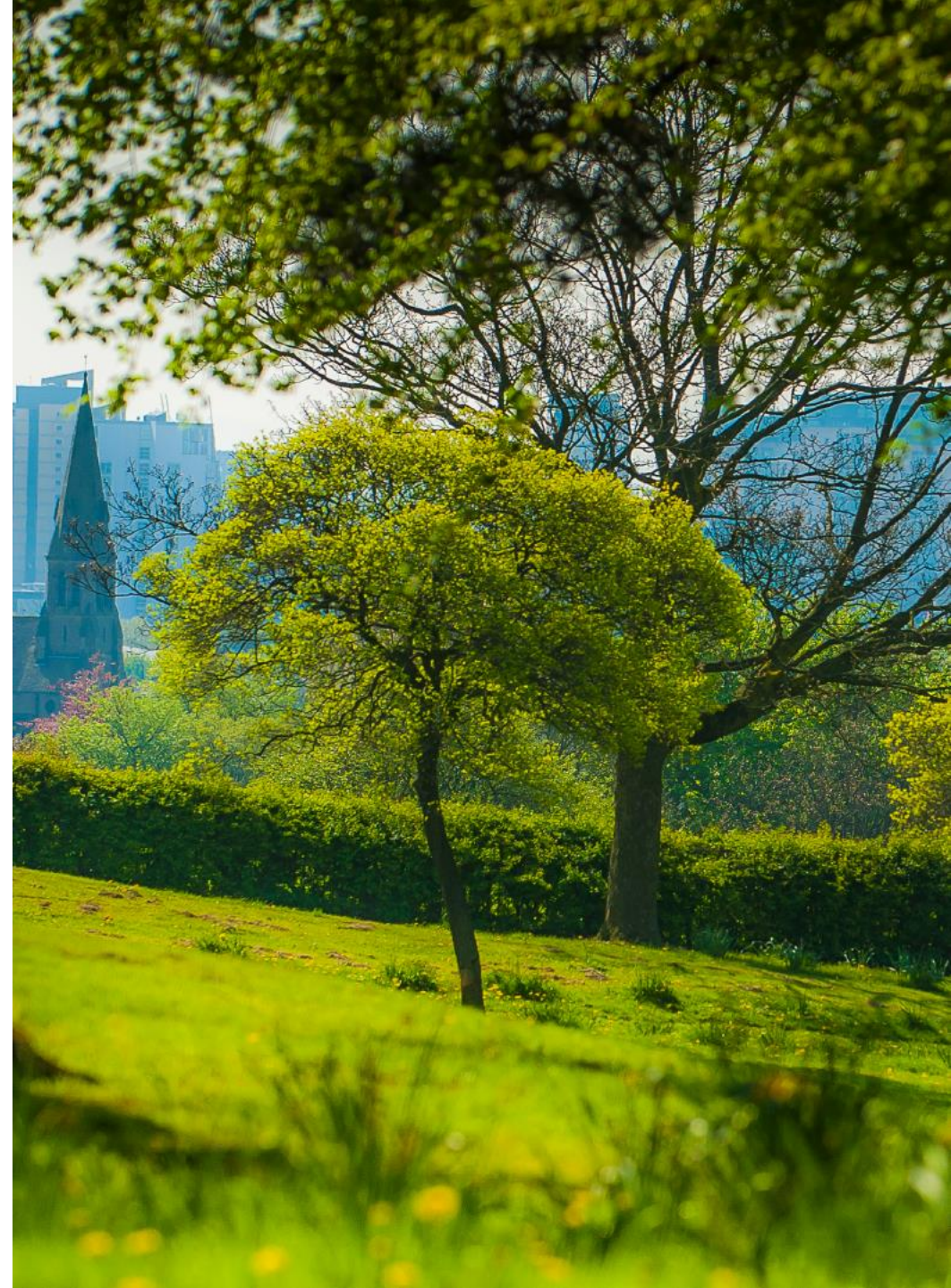
**Salford Local Plan:**

Development Management Policies  
and Designations

Adopted 18 January 2023

# Drivers: Salford context

- Approximately half the city area is open land (including parks, farmland, some previously developed land, etc)
- 30% of Salford is Green Belt
- High levels of deprivation in some areas and high levels of inequality within the city
- High levels of development (2800 dwellings in 21/22)



# Drivers: Salford context

- Only 27% of local sites (SBIs) in positive conservation management
- No surface water bodies at good ecological status
- No nationally or internationally designated sites for nature conservation
- Green Belt in western Salford part of a narrow “gap” between the Manchester and Merseyside conurbations – important for species movement in warming climate

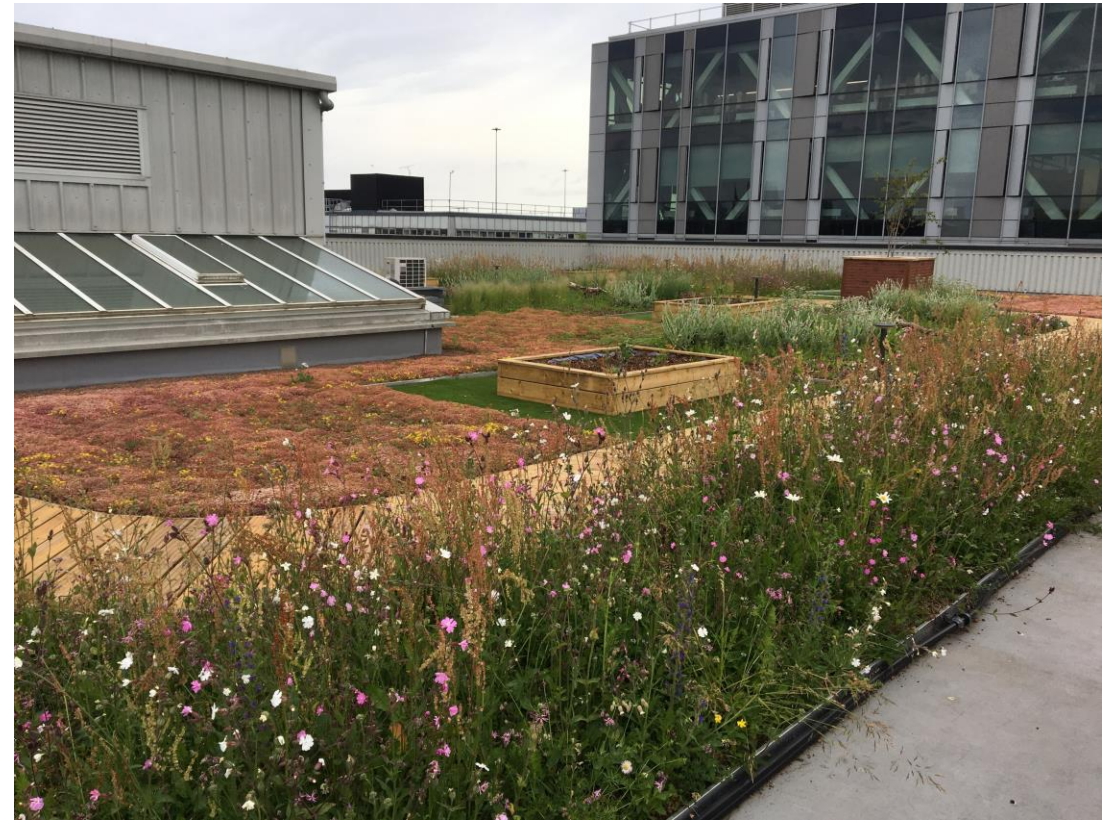
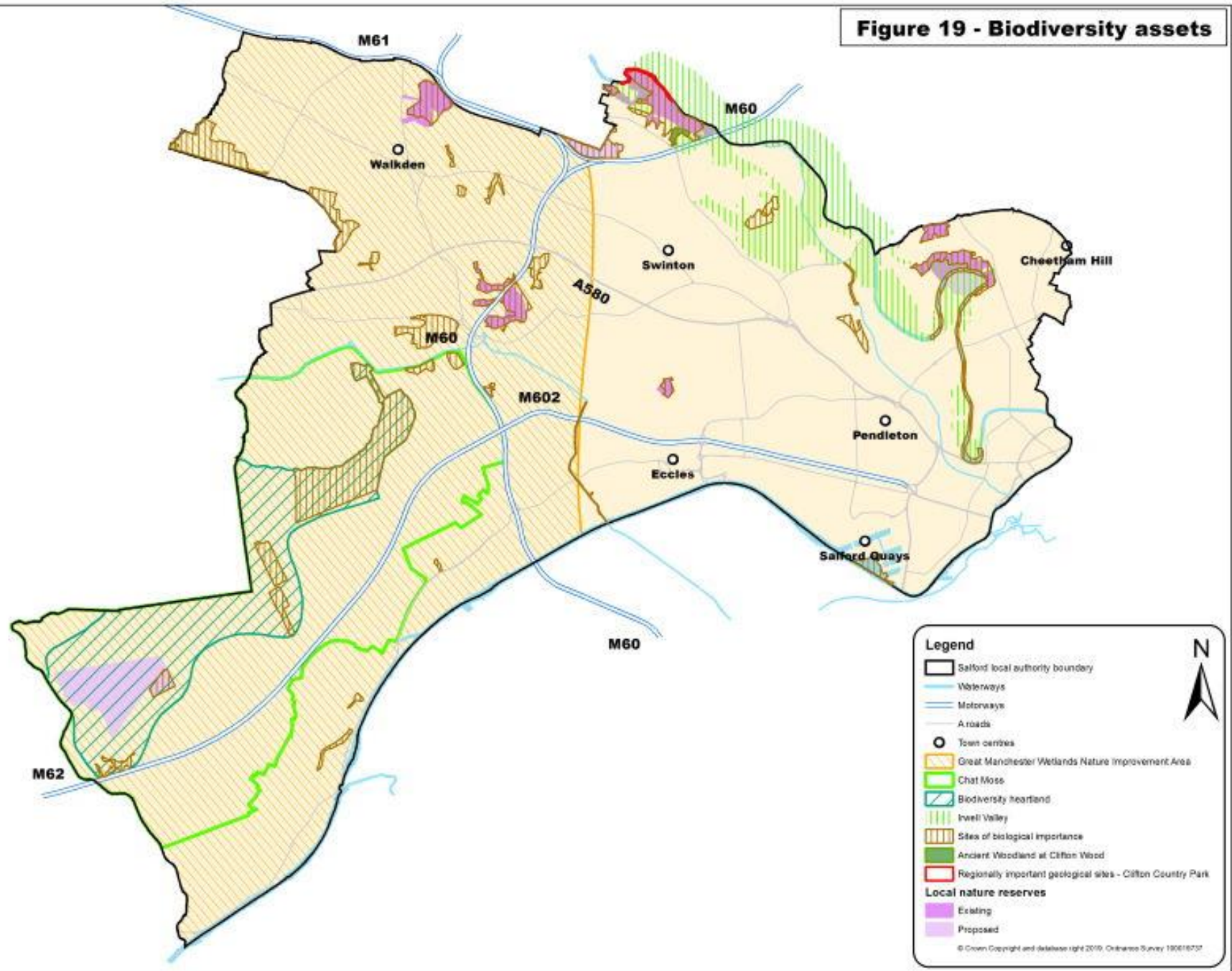


Figure 19 - Biodiversity assets





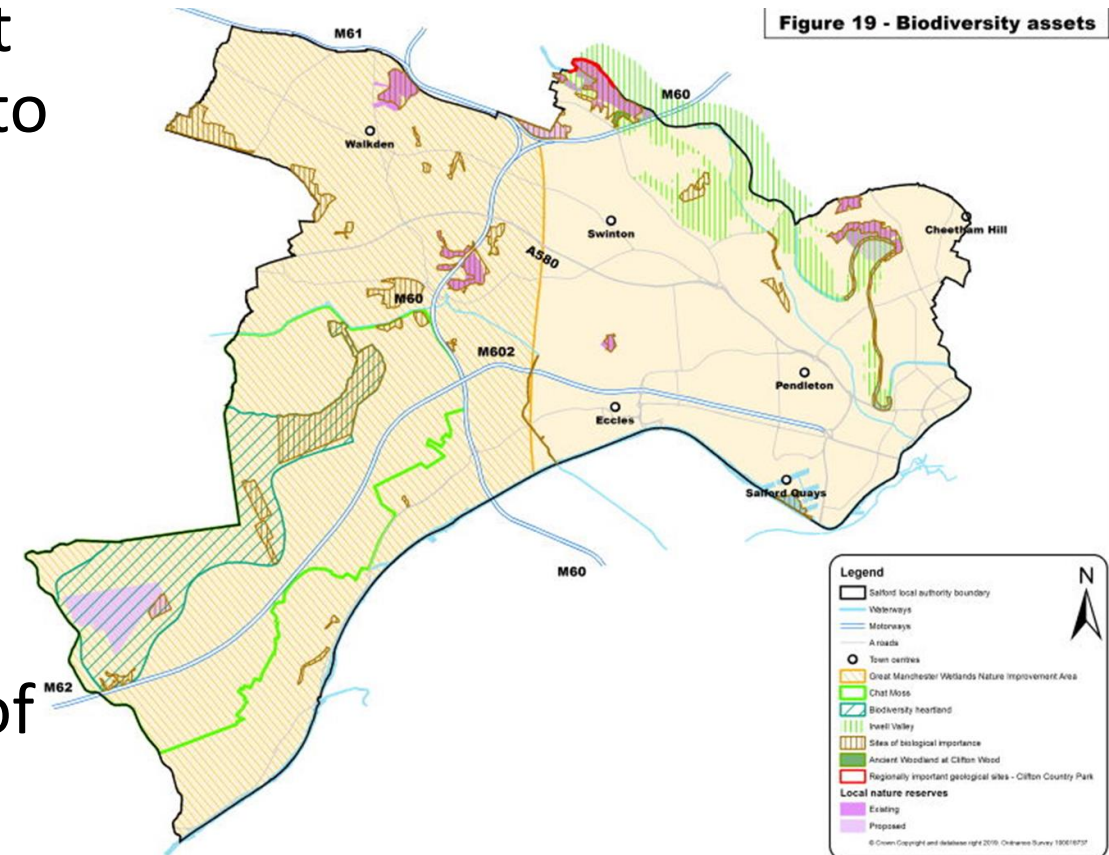
# Local Plan Biodiversity Net Gain policy

- All development shall deliver a net gain in biodiversity value. All major development shall deliver at least a 10% net gain in biodiversity value
- Lead Member supportive



# Priorities for off-site Compensation

- On-site habitat provision/enhancement wherever practicable > improvements to sites within the local area > other sites elsewhere within Salford, particularly the Biodiversity Heartland;
- Facilitating species movement; and
- Provision/enhancement of priority habitats, having regard to the scarcity of that habitat within Salford.



# Challenges to Policy

- Some challenges to 10% from developers at Publication stage (early 2020 when Environment Bill at early stages)
- Also challenges from an environmental perspective
- Background Note on Biodiversity Net Gain produced prior to Submission – far less challenge at subsequent stages (Submission June 2021, Hearings December 2021)

# Current implementation ahead of regulations

- Validation checklist – biodiversity metric required for major development since early 2021; implemented BNG based on requirements in the NPPF (para 174, 180) until Local Plan adoption
- Now seeking 10% on major applications and some evidence of net gain on minor applications
- Working towards a list of potential offset sites – currently commissioning Habitat Management Plans for several sites in Salford

# Some issues and challenges

- Raising awareness of new requirements
- Site clearance in advance of survey
- Identifying BNG off-set sites
  - Finding space to plant trees
  - Local benefits vs strategic priorities
  - Legal and practical issues around securing offsets on council owned land
- Role of Local Nature Recovery Strategies in guiding investment – developed at county level but need to ensure local priorities addressed



Salford City Council

**Any Questions?**

[fiona.fryer@salford.gov.uk](mailto:fiona.fryer@salford.gov.uk)