

PAS EVENTS

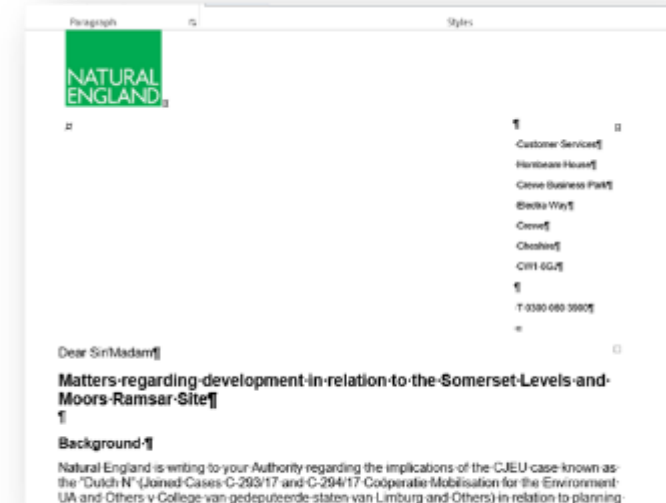
20th and 29th July 2021

**Update: Phosphates on the Somerset
Levels and Moors**

Phosphates on the Somerset Levels and Moors

Introduction / background

- Natural England (NE) letter 17th August 2020.
 - Court Judgement (ie Dutch N).
 - New development - phosphate neutral and does not adversely effect the Somerset Levels and Moors Ramsar Site.
 - Broad geographical extent (See Map – next slide).
- NE letter also sent to other LPA's in Somerset.

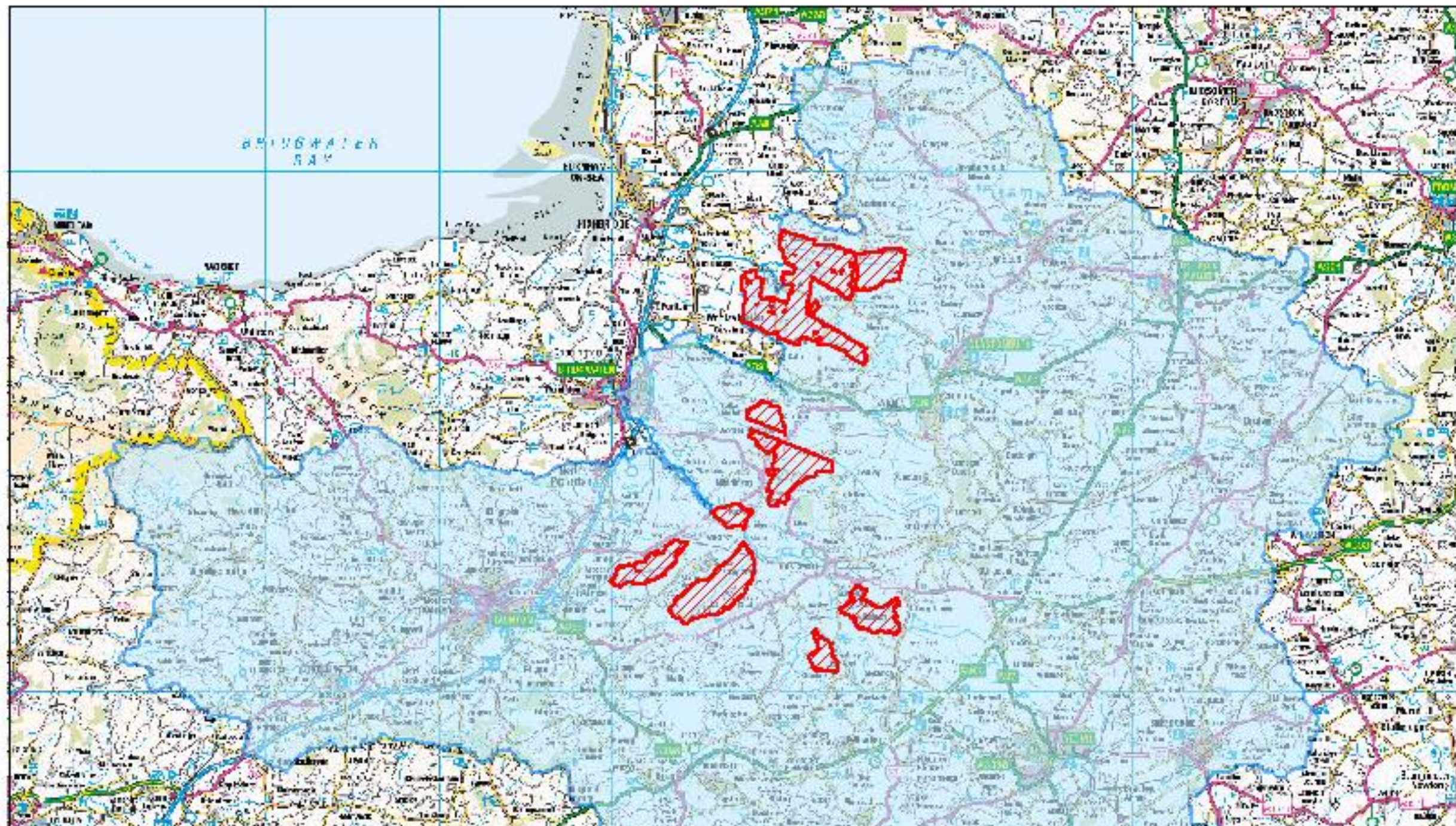


Phosphates on the Somerset Levels and Moors

- Summary: Types of Development Affected.
 - New residential units.
 - Commercial developments.
 - Agricultural Development.
 - Prior Notifications.
 - Anaerobic Digesters.
 - Possibly some tourism attractions.

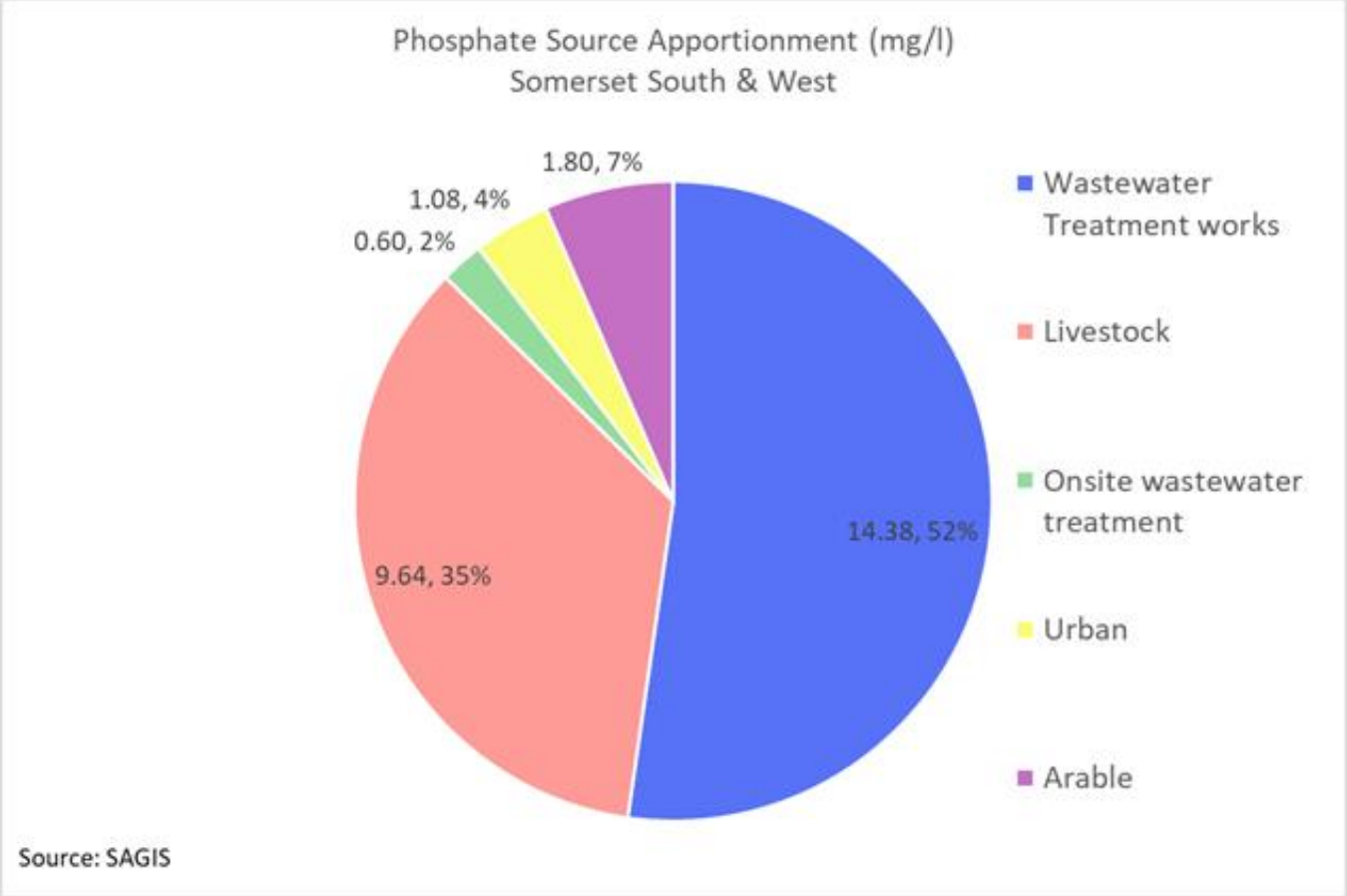
Full details listed on websites. Eg SWT at:

<https://www.somersetwestandtaunton.gov.uk/planning/phosphates-on-the-somerset-levels-and-moors/>



Phosphates on the Somerset Levels and Moors

The principal sources of phosphates



Phosphates on the Somerset Levels and Moors

Somerset: Overview of where we currently are

- **Phosphate calculator.**

- Completed Feb 2021. Free on-line tool.
- Awaiting latest technical up-dates from NE.
- Determining planning applications slowly (eg Comeytrowe).
- Further improvements to phosphate calculator - part of Strategy workstream.
- Calculator available on SWT website:

<https://www.somersetwestandtaunton.gov.uk/planning/phosphates-on-the-somerset-levels-and-moors/>

Phosphates on the Somerset Levels and Moors

Somerset: Overview of where we currently are

- **Phosphate strategy work (SWT leading)**
 - Partnership, went out to tender - January 2021. Appointed March 2021.
 - Work streams.
 - Review area of risk.
 - Types of development.
 - Improve / develop the phosphate calculator.
 - Strategic solutions – 4 sub catchment areas.
 - Model LP policies and SPD for each LPA.
 - Stakeholder engagement on strategic solutions - August 2021.

Phosphates on the Somerset Levels and Moors

Somerset: Overview of where we currently are

- **Wessex Water: phosphate credits trading platform (EnTrade)**
 - Working well with them on EnTrade: trading platform (both on policy and DM matters).
 - Stage 2 pilots progressing (River Tone and Parrett Catchment areas).
 - Fully acknowledge the considerable amount of work undertaken to date to ensure compliance with HRA legislation; NE accredit scheme, underwriting performance.
 - Concerns in some quarters have been raised regarding the principle of EnTrade.

Phosphates on the Somerset Levels and Moors

- **Wessex Water: EnTrade (continued)**
 - As officers of the LPA - have various detailed concerns: the management / allocation of P credits in the DM process (implementation, monitoring and enforcement) .
 - The cost of P credits (a function of supply and demand - so will vary over time / over rounds). The impact this could have on economic viability and likely impact on SME's.
 - Long term monitoring; management; enforcement by the LPA should a breach of a condition occur.
 - How much P will be delivered ? How many homes unlocked? The cost per home / ha? Interim solution?

Phosphates on the Somerset Levels and Moors

Somerset: Overview of where we currently are

- **Lobbying Government:**

- LPA letter (December 2020) and MHCLG response (January 2021 on the SWT website at:

<https://www.somersetwestandtaunton.gov.uk/planning/phosphates-on-the-somerset-levels-and-moors/>

- Welcome support and funding to date – but publicly no visible movement on various matters (eg 5YHLS)
- On behalf of the Somerset LPA's, currently drafting and coordinating another letter to MHCLG.

Phosphates on the Somerset Levels and Moors

Key Challenges:

- National guidance and disclosure of legal advice.
- Fareham challenge – eg NE clarity on household rates.
- Phosphate stripping technology and measures - limited understanding.
- Lack of actual data – theoretical P values.
- Trading credit platform(s). Long term monitoring and responsibility for water quality measures.
- Funding opportunities – OFWAT Water Innovation Fund.
- Five year housing land supply / preventing the determination of planning applications (SWT - 95 currently awaiting HRA) / strategic LP allocations / SWT own developments / brownfield.

Phosphates on the Somerset Levels and Moors

Opportunities:

- Preparation for Asset Management Plan (AMP 8) – how do we inform and influence?
- Shared learning – nature based solutions and phosphate removal trials 2015-2020 EA report.
- P-recovery at STW – Slough, Derby and Nottingham full scale biological nutrient removal plant (high quality grade fertilizer pellets).
- Partnership learning on developing test beds and trials for water quality
- Funding opportunities – project delivery and monitoring.

Phosphates on the Somerset Levels and Moors

End



Phosphates on the Somerset Levels and Moors

Discussion ... any questions ?

