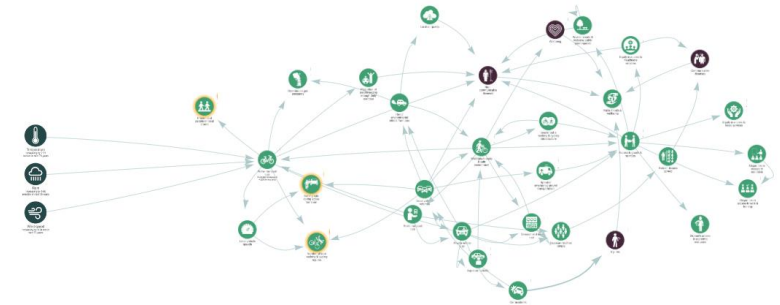
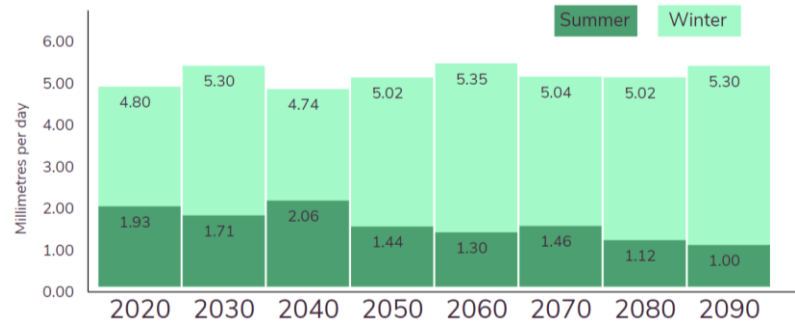
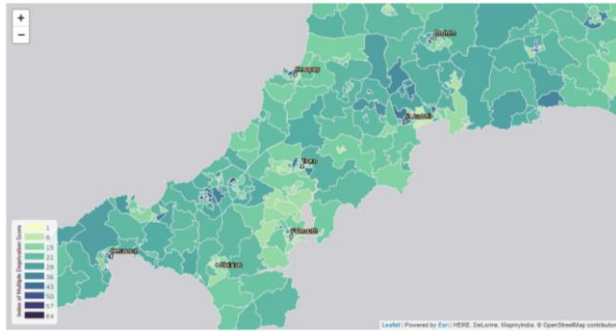


LCAT – the Local Climate Adaptation Tool

Net Zero Innovation Programme 2020/21 Showcase



Peter Lefort

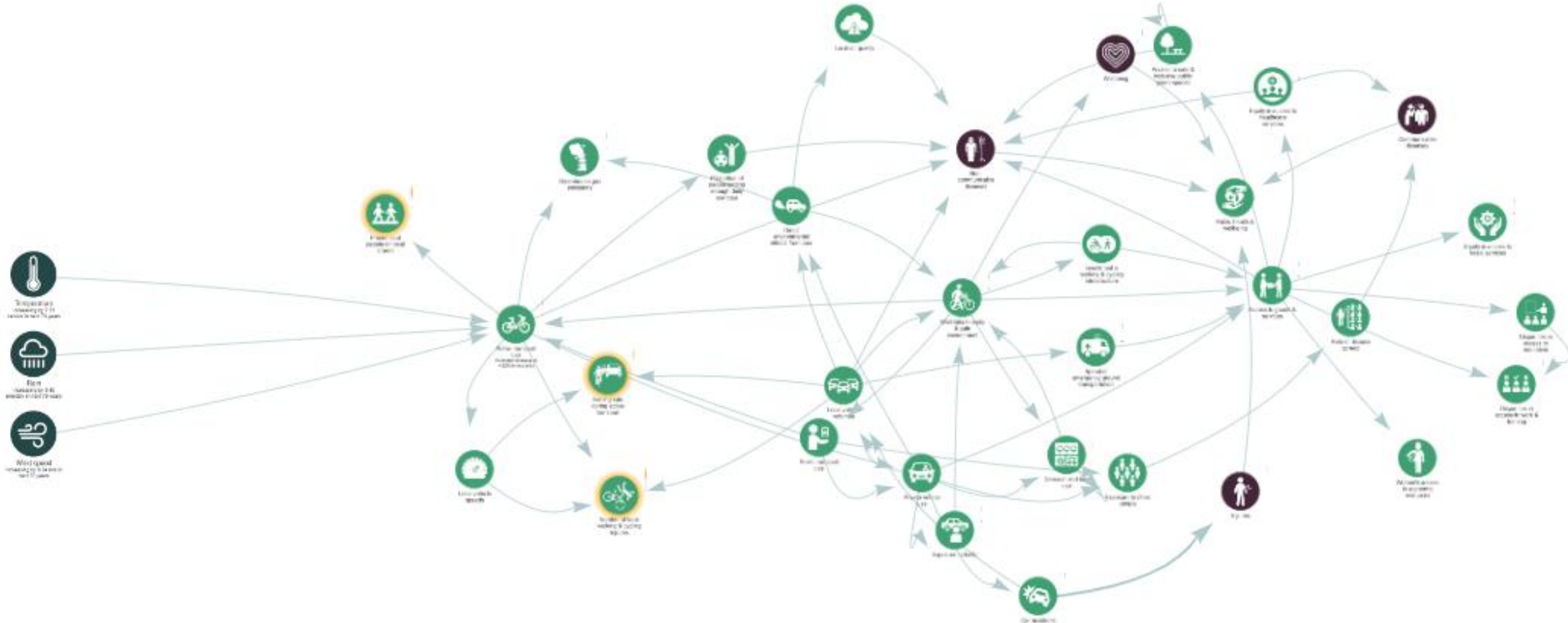
Alex Rainbow



European Centre for
Environment & Human Health



1 – The Challenge



2 – The Solution

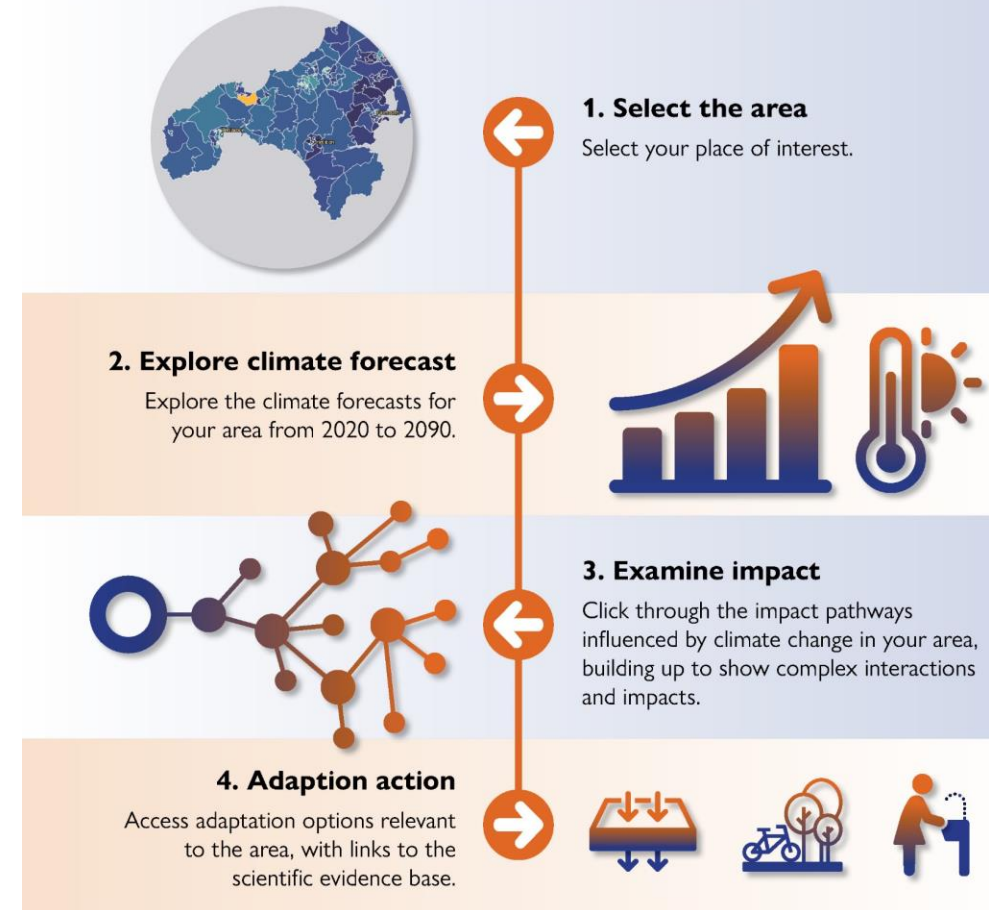
Stakeholder engagement
Prototype development
Testing and feedback



Local Climate Adaptation Tool (LCAT): Supporting local decision-makers adapt to climate change.

Easy to use, LCAT brings together complex climate models, adaptation options and health impact evidence to help the user understand the health implications of climate change in their local area. Importantly, LCAT also generates recommendations of appropriate adaptation approaches, based on the best available evidence, that will support the health and wellbeing of local people.

Here is how it works.



3 – The Impact



**UN CLIMATE
CHANGE
CONFERENCE
UK 2021**

IN PARTNERSHIP WITH ITALY



4 – Lessons Learned

Adaptation data must be accompanied by supporting a culture change in short-term decision making

The University and Local Authority relationship benefitted greatly from time and space to challenge assumptions and understand the relevant gaps to address

There is a clear need for decision support on adaptation that balances clear and concise information with access to a detailed evidence base