



**NFCC**

Fire Central  
Programme Office

# Community Risk Programme

Phil Loach, Programme Executive

*"To be the evidence based toolkit for assessing UK Fire & Rescue Service related risk and vulnerability to improve the safety, health, well-being and economic prosperity of communities."*

**FACING THE FUTURE:**

Findings from the review of efficiencies and operations in fire and  
rescue authorities in England

Sir Ken Knight CBE QFSM FIFireE



**NFCC**  
National Fire  
Chiefs Council

**National Review of Community Risk Methodology across  
the UK Fire and Rescue Service**

**2019**

Dr Rowena Hill,  
Dr Sally Andrews,  
Professor Peter Murphy,  
Katarzyna Lakoma



**The Driver for Change**

# HMICFRS – State of Fire Report



*“Since 2004, localism has been encouraged at the expense of national standards. While it is reasonable to allow services to best respond to local risk, there is, in some cases, **unjustifiable variation in the level of service the public receive.** In June 2019, we recommended that the sector should take steps to address some of this variation. As part of this, **the NFCC, through its community risk programme,** has begun work to develop a consistent risk assessment methodology for services to use.”*

# What is the Community Risk Programme?

## NFCC strategic commitment

*“NFCC will work with FRSs to ensure that Risk Assessments align to a national definition of risk, supporting the development of risk assessment methodologies which allow a consistent risk-based approach to risk management planning, enables FRSs to focus its resources on activities where they will have the greatest impact on reducing risk and vulnerability within their communities.”*

## The Challenge

*There is currently no sector endorsed evidence based toolkit to support UKFRSs in developing their community risk management plans. The absence of a toolkit has resulted in inconsistent approaches being taken with limited good practice recognised nationally.*



# NTU Research Considerations

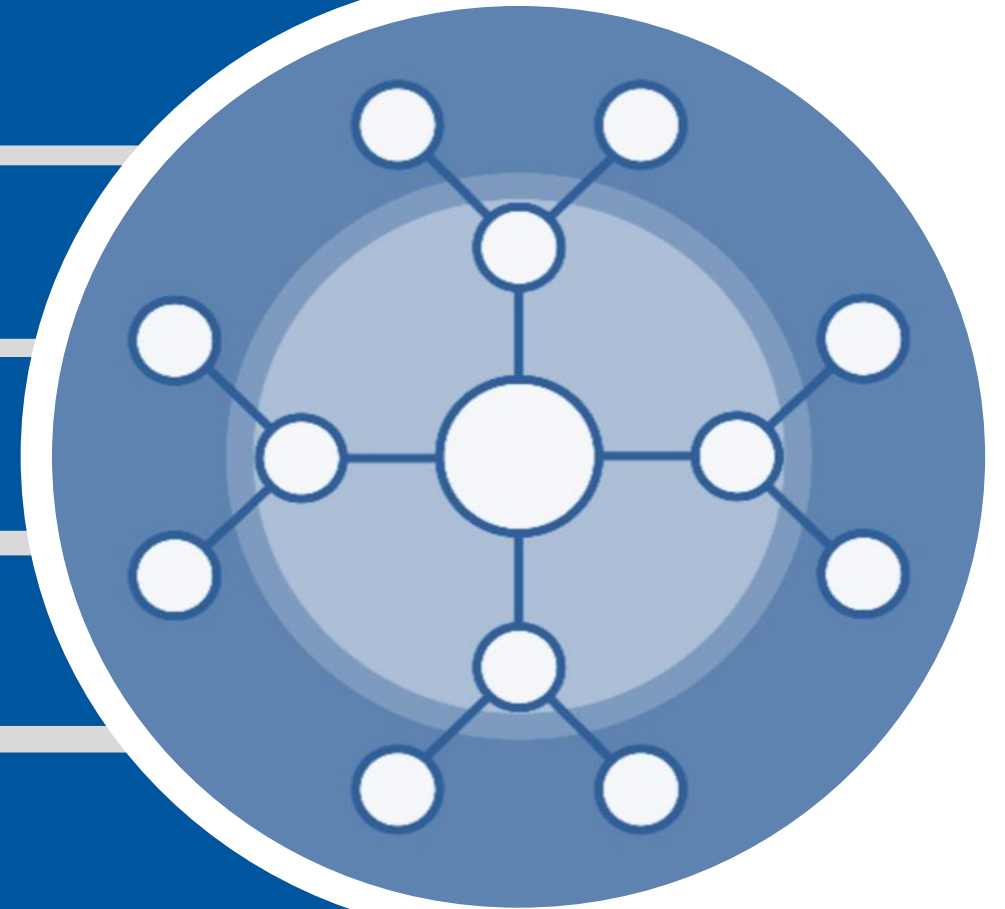
FRS Use of Data

FRS Use of Evidence

CRM Methodology

Evaluation

Inconsistency!



# CRP projects

1. Definition of risk (Underway)

3. Economic cost of fire (Underway)

5. Evaluation – methodologies (Summer 2020)

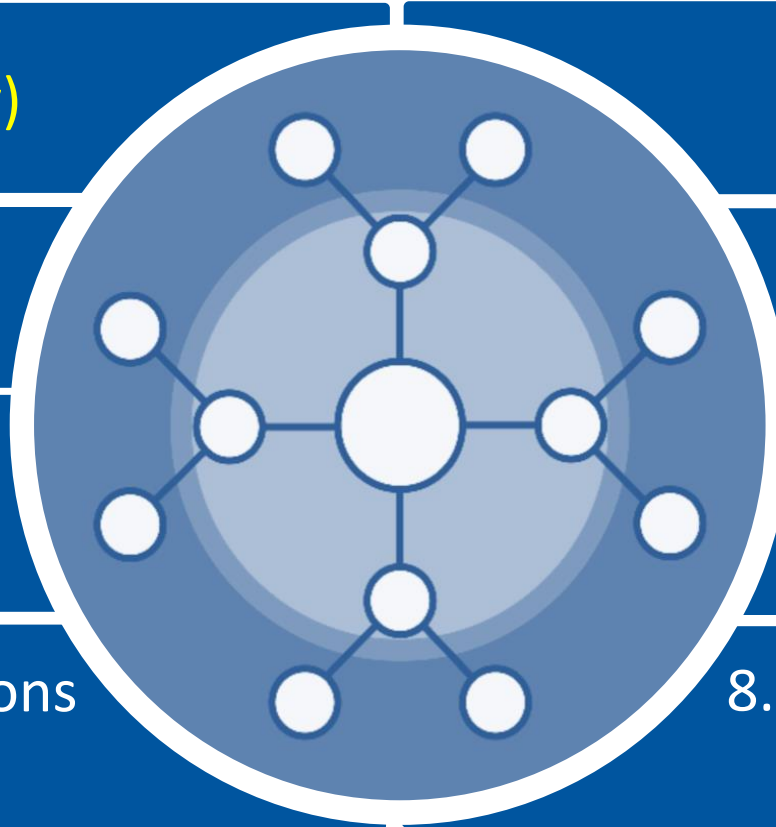
7. Evaluation of fire interventions (January 2021)

2. Review/ produce (I)RMP guidance (Underway)

4. Data projects\* (Underway)

6. Competencies for risk managers (Underway)

8. Risk assessment methodologies & interventions (January 2021)



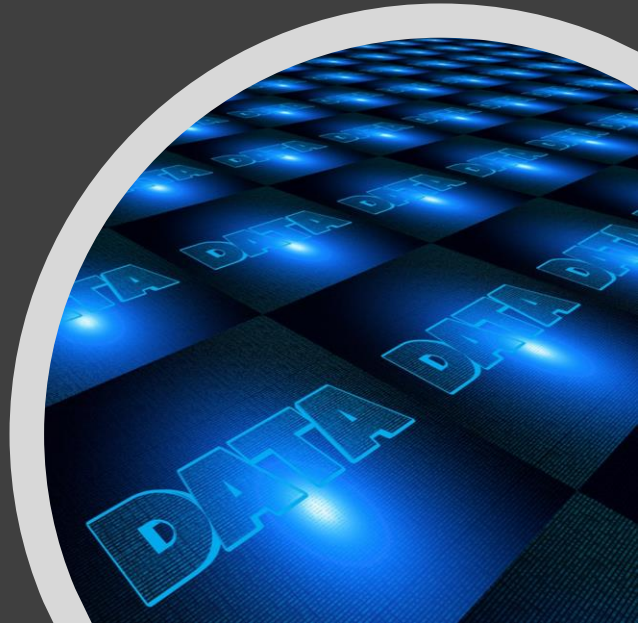
\* Led by NFCC Data & Digital Programme, informed by CRP requirements

# Competence

Competence is  
The ability of a person  
individual to do a  
combination of



Project Updates



Delivery of Toolkit\*

Delivery of Projects & Development of Toolkit from evidence base.

Development of Projects to deliver evidence base for the toolkit

Understanding of Current approach to (I)RMP across UK FRSS

**We are Here**

March 19 to October 19

August 18 to March 19

8 Projects  
5 Underway

- Research Project
- Led by NTU
  - Survey to FRSS
  - 43 responses
  - Research Findings

April 2017

Development of NFCC Strategic Commitments

October 2017

Community Risk Programme Commissioned by NFCC

\* Products to be delivered on an ongoing basis and made available to Stakeholders.

# Programme Plan & Recap





**NFCC**

Fire Central  
Programme Office

# Stakeholder Engagement

# Programme Engagement



Home Office



FSMC (CRP Representative)

Technical Working Group

Strategic Engagement Forum



# Communication

NFCC website

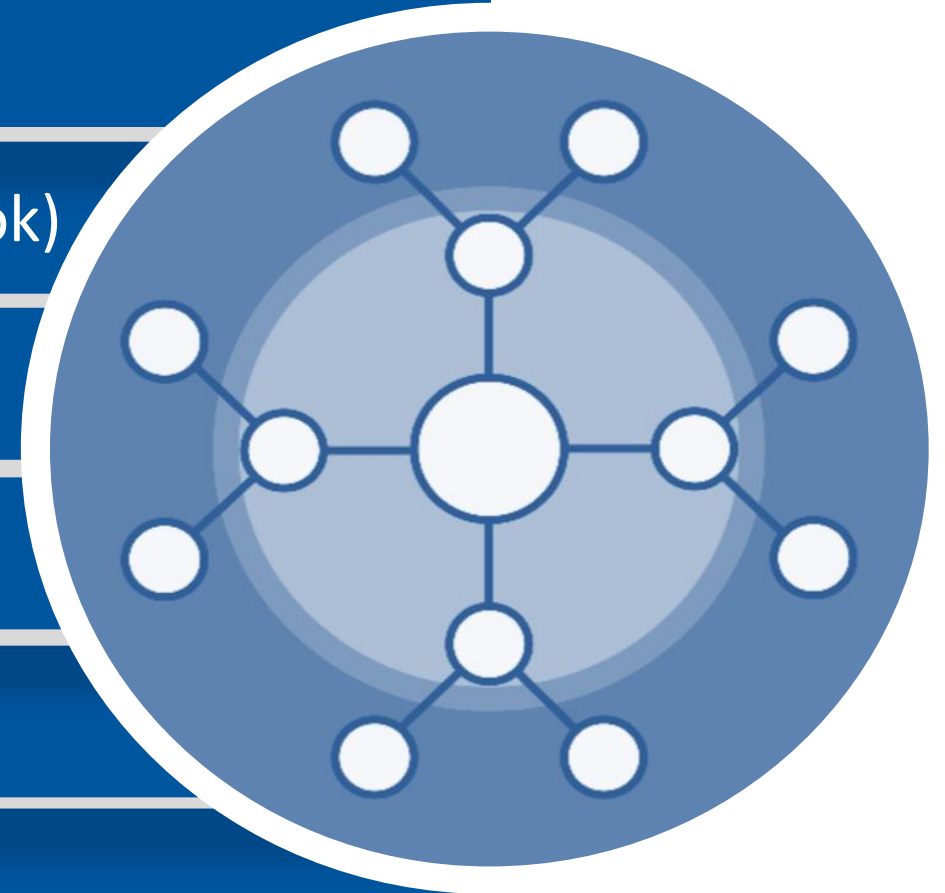
Discussion, dialogue, updates: Workplace (Facebook)

NFCC Social media: Twitter, LinkedIn

Quarterly Briefings for Stakeholders

Strategic Engagement Forum

Publications eg. Fire Magazine





**NFCC**

Fire Central  
Programme Office

Thank you