



Department for Levelling Up,
Housing & Communities

Design Codes and the Levelling Up and Regeneration Bill

Sarah Allan & Henry Primarolo
Design and Placemaking Team, DLUHC



- 1. Background on design policy and guidance (3 mins)**
- 2. Design codes and the LURB (7 mins & 5 mins for Q&A)**
- 3. NMDC Testing Programme (2 mins) and Design Code Pathfinders (5 mins)**
- 4. Next steps for design coding (3 & 5 mins for Q&A)**



Department for Levelling Up,
Housing & Communities

Background on design policy and guidance

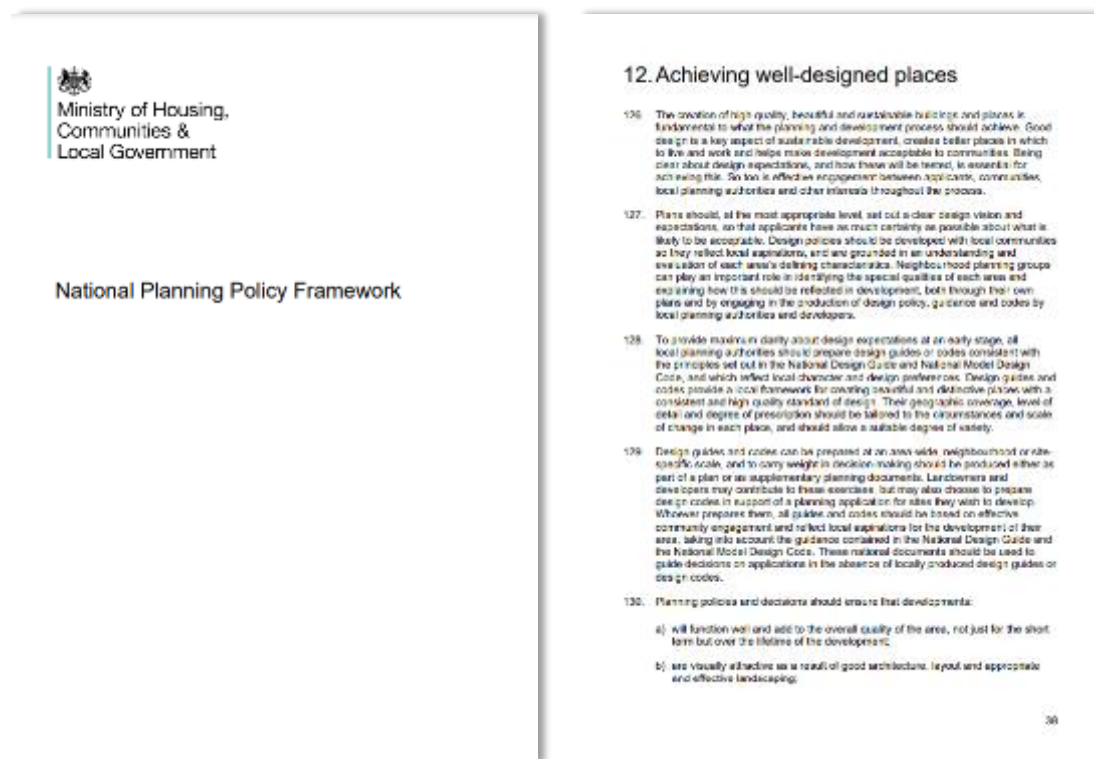


- The importance of **quality**, as well as the **quantity** of homes was set out in the Housing White Paper in 2017.
- Design quality has been strengthened in the **National Planning Policy Framework** and associated guidance, including the **National Design Guide** and recently published **National Model Design Code**.
- The Secretary of State convened the **Building Better, Building Beautiful Commission** in 2019 and announced the creation of an **Office for Place**, which will pioneer design and beauty within the planning system.



National Policy context

- Updates to the **National Planning Policy Framework (NPPF)** which sets out the Government’s planning policies for England and how these should be applied.
- Updates to the NPPF **provide greater emphasis on granting permission for well-designed development and refusing it for poor quality schemes.**
- Chapter 12 focuses on *Achieving well-designed places*.
- Other updates to the NPPF reflect design quality and beauty, for example making beauty and placemaking a strategic objective of the planning system and **an expectation that local authorities will produce design codes or guides**





The National Design Guide

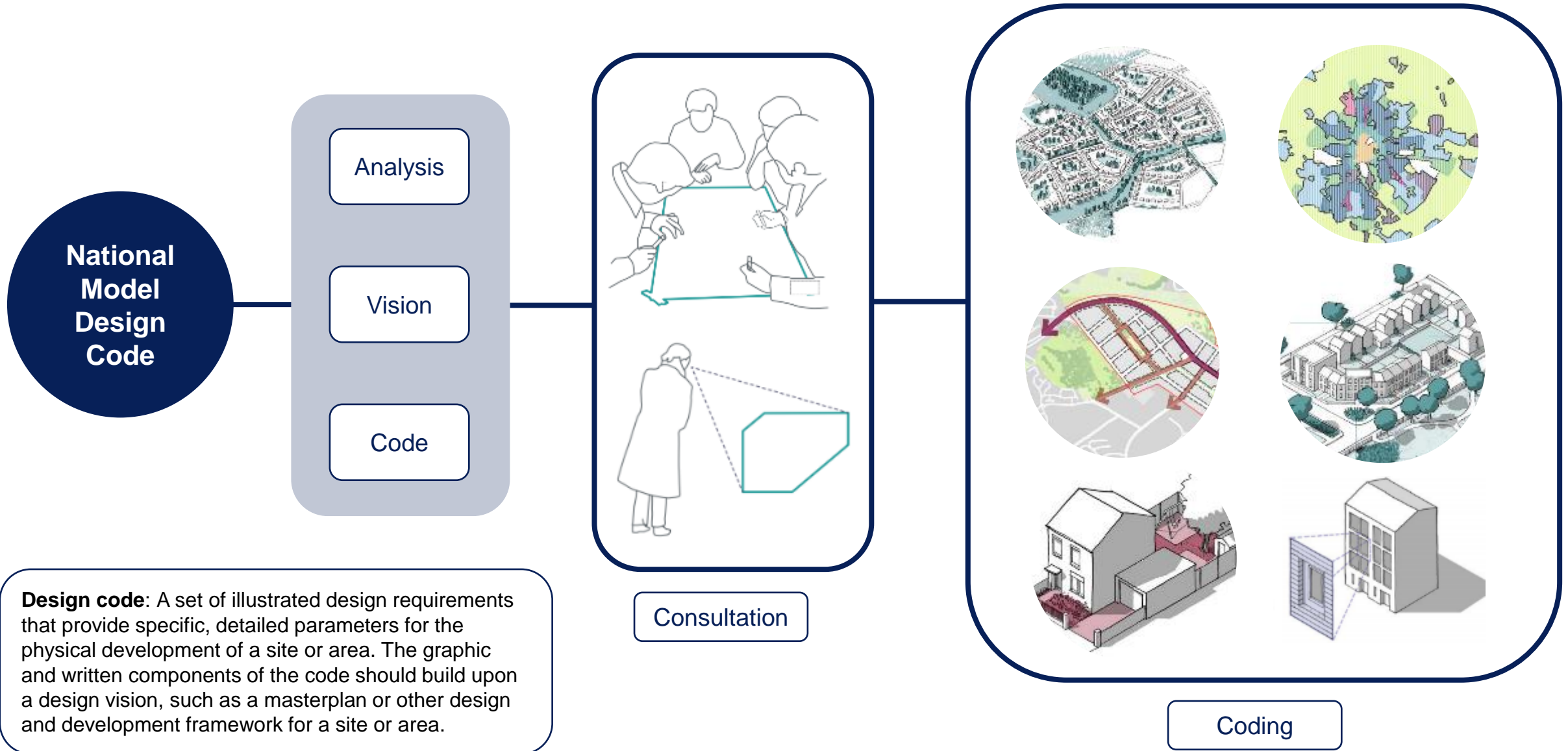
- Sets out 10 characteristics of well-designed places (right)
- **Well-designed places** have individual characteristics which work together to create its physical Character. The ten characteristics help to nurture and sustain a sense of **Community**. They work to positively address environmental issues affecting Climate. They all contribute towards the cross-cutting themes for good design set out in the National Planning Policy Framework.

Planning Practice Guidance





Planning Practice Guidance

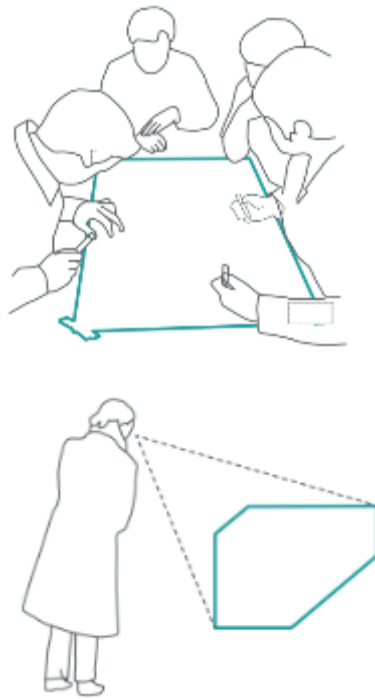


National
Model
Design
Code

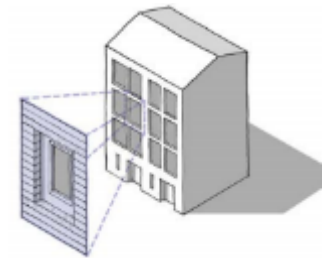
Analysis

Vision

Code



Consultation



Coding

Design code: A set of illustrated design requirements that provide specific, detailed parameters for the physical development of a site or area. The graphic and written components of the code should build upon a design vision, such as a masterplan or other design and development framework for a site or area.



Department for Levelling Up,
Housing & Communities

Design Codes and the Levelling Up and Regeneration Bill



Creating beautiful places

Levelling up and Regeneration Bill

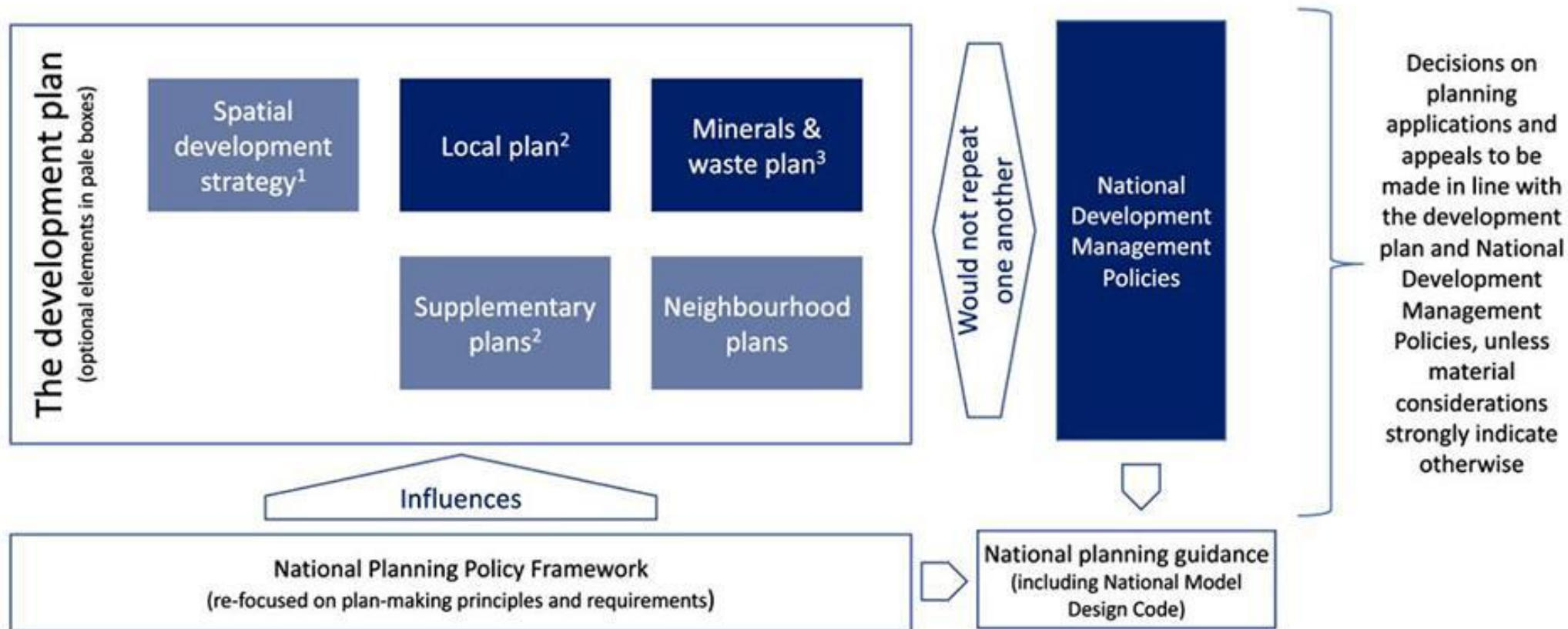


- The Levelling up and Regeneration Bill seeks to:
 - **require every local planning authority to produce a design code for its area.** These codes will have full weight in making decision on development, either through forming part of local plans or being prepared as a supplementary plan (15F in schedule 7).
 - allow local planning authorities to set design requirements at other scales either as part of their local plan, supplementary plan (15C and 15CC in schedule 7), or as a neighbourhood plan (clause 88).
 - Include a requirement for local planning authorities to prepare a Local Plan Timetable (15B in schedule 7), which includes how the authority proposes to comply with the requirement for authority wide codes.



The role of plans and national policy in the reformed system

(elements with full statutory weight in decisions on applications shown in blue)



- 1 Mandatory where SDS powers have been conferred on Mayoral/combined authorities; voluntary elsewhere.
- 2 A **district-wide design code** must form part of the local plan, or else be contained in a supplementary plan. The local plan will also be informed by an **Infrastructure Delivery Strategy**, to be produced by the local planning authority, and by any **Neighbourhood Priorities Statements** produced by neighbourhood planning groups in the area.
- 3 Minerals and waste can be covered in separate documents, and can be combined with the local plan where an authority has powers over both.



Department for Levelling Up, Housing & Communities

- During the Bill's passage, we will continue work on the detail of regulations, policy, and guidance.
- The consultation on reforms to national planning policy was published on 22 December 2022, to seek views on:
 - our proposed approach to updating to the National Planning Policy Framework
 - our proposed approach to preparing National Development Management Policies,
 - how we might develop policy to support levelling up,
 - how national planning policy is currently accessed by users.
- The consultation runs until 2 March 2023.
- Once the Bill has received Royal Assent, government will run a full consultation on a draft NPPF.





Department for Levelling Up,
Housing & Communities

Creating beautiful places Beyond the Levelling up and Regeneration Bill



- Beyond the Bill, we will continue the work to establish the **'Office for Place'**, which will support local planning authorities and communities on design coding.
- We continue to support **design code pathfinders**, offering support and funding to 25 local authorities to produce local design codes, serving as examples to other areas.



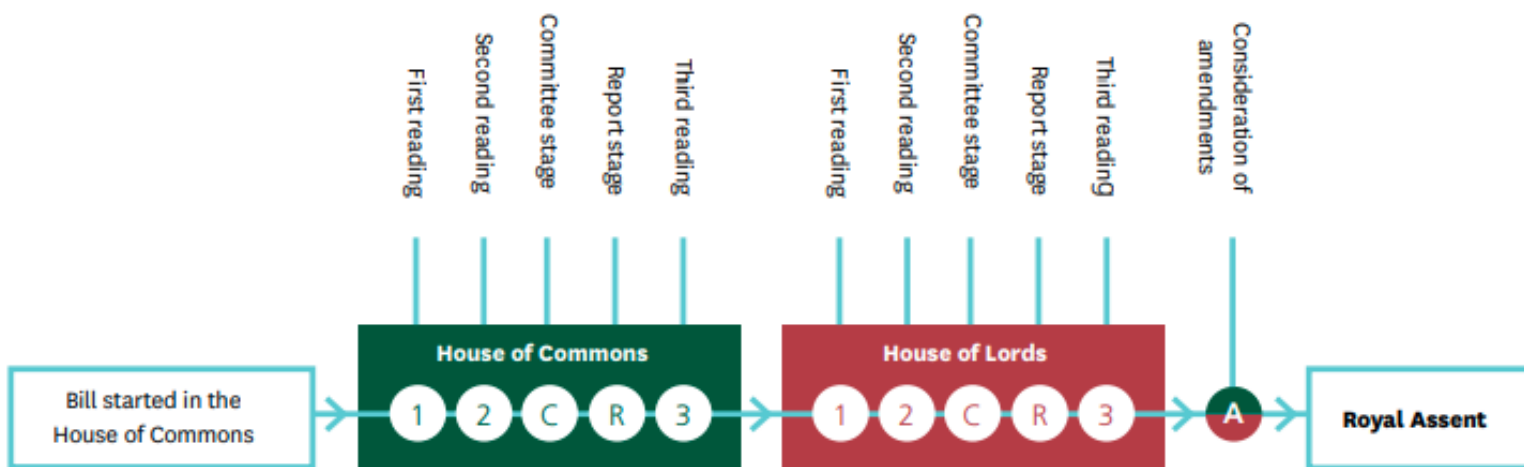
Department for Levelling Up, Housing & Communities

The Bill was introduced on 11 May 2022

The Third reading in the House of Commons was undertaken on 13 December 2022

The Second reading in the House of Lords was undertaken on 17 January 2023

It is anticipated the Bill will complete its parliamentary passage in Spring 2023





Department for Levelling Up,
Housing & Communities

Q&A - design codes and the LURB



Department for Levelling Up,
Housing & Communities

NMDC Testing Programme and Design Code Pathfinders



Lessons identified by NMDC testing pilot teams

- Sending a clear message about design quality (and design coding) expectations
- It takes time, skills and resources, particularly if engagement is required
- Some places are more challenging and complex, but setting ambition is key
- Understanding viability (at the start of the process)
- Balancing creativity with certainty, must-haves with nice-to-haves
- Giving codes status
- Don't reinvent the wheel
- Clear local leadership, bringing stakeholders together
- Community knowledge is valuable but has its limits
- Different approaches needed to code at different scales

Herefordshire: guidance for NP codes



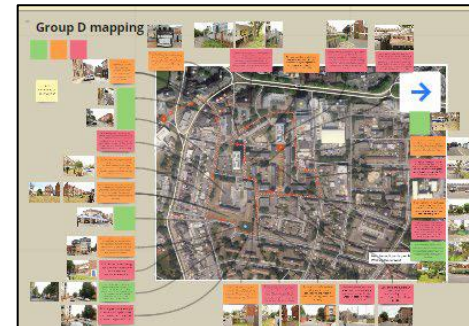
Rural authority-wide

Hyndburn: coding for garden village



Large sites and extensions

Portsmouth: Toolkit for estate renewal



Town centres and neighbourhoods

Southwark: Coding for opportunity area

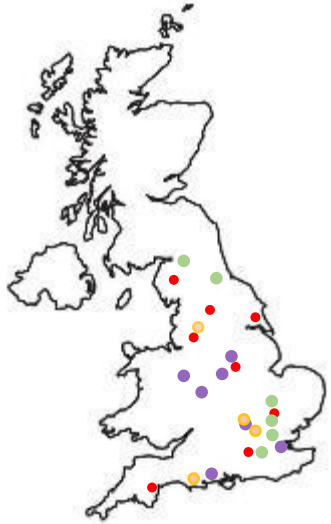


City centre regeneration



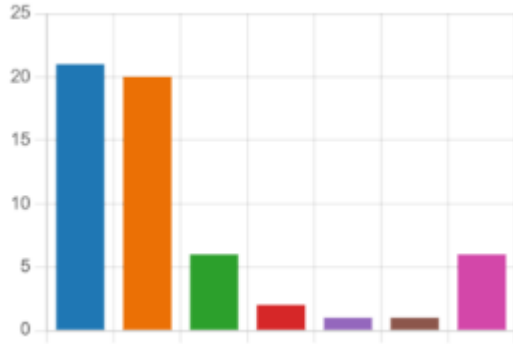
Department for Levelling Up,
Housing & Communities

Which of the **seven steps of the Coding Process** described in the National Model Design Code has your Pathfinder engaged with over the last month:

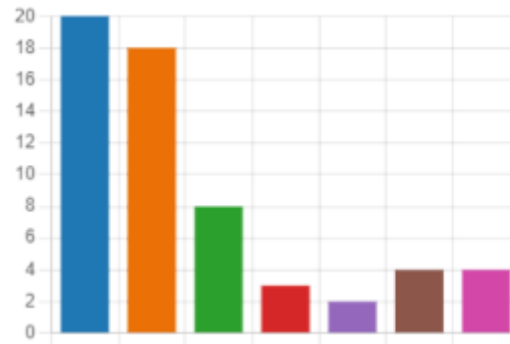


21 LPAs
4 NPGs

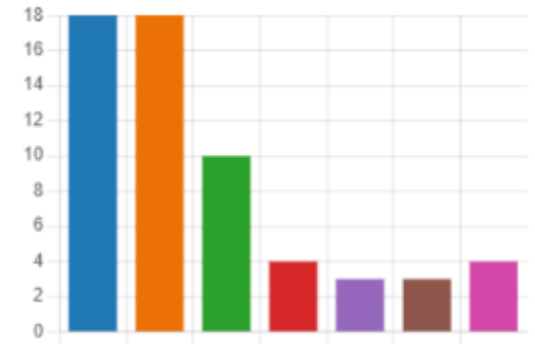
- Scoping
- Baseline
- Design Vision
- Coding Plan
- Masterplanning
- Guidance for Area Types
- General Guidance



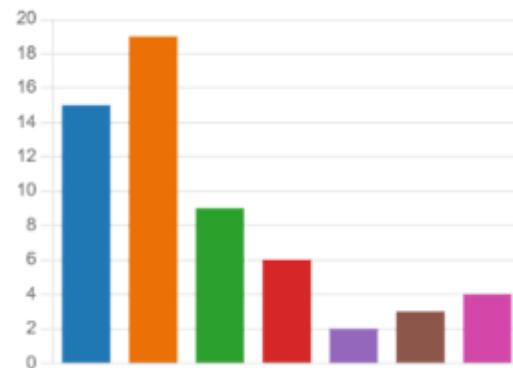
May



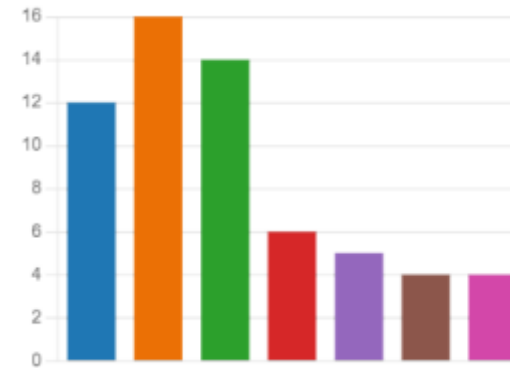
June



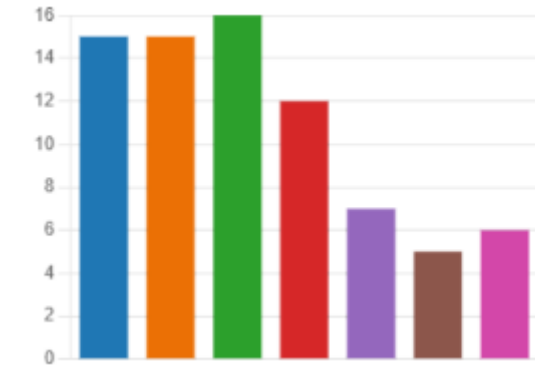
July



August



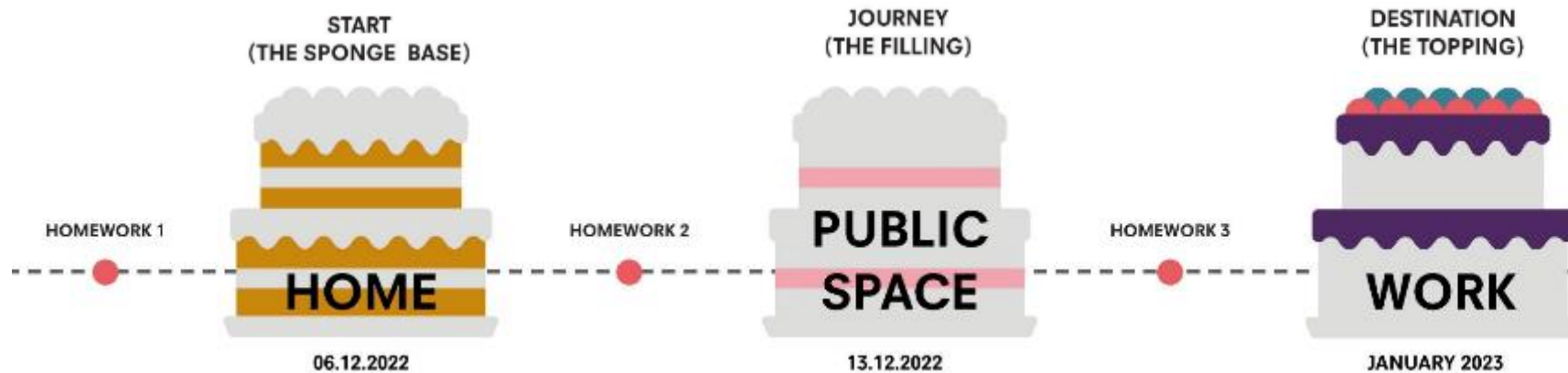
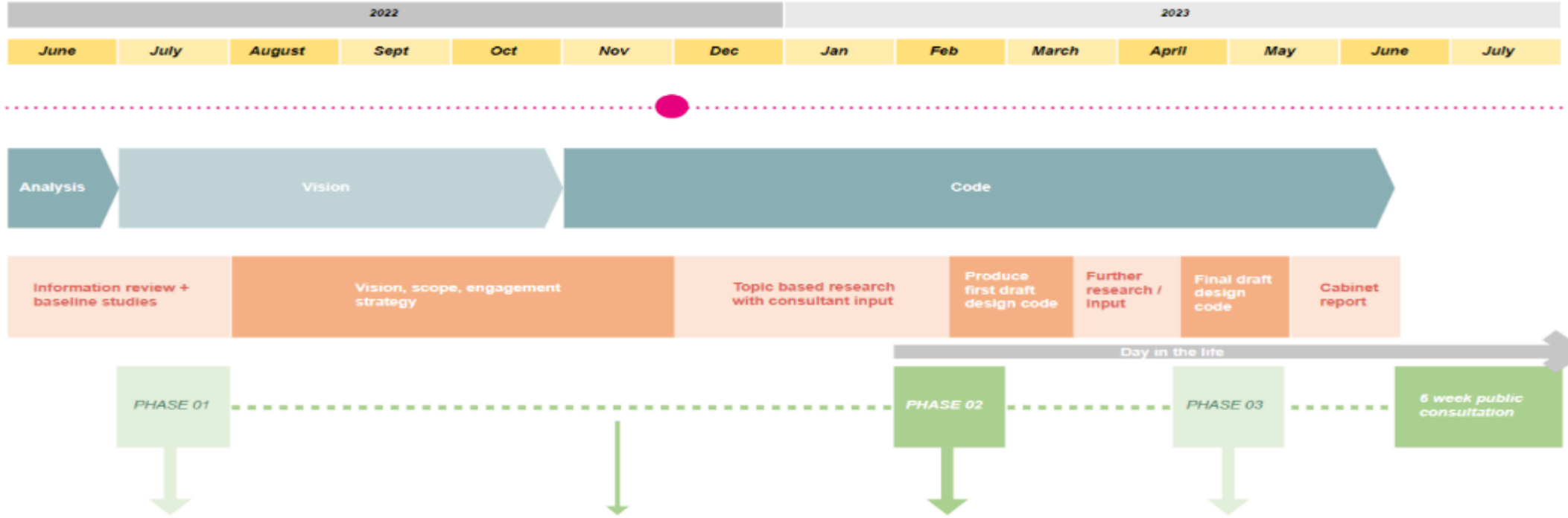
September



October



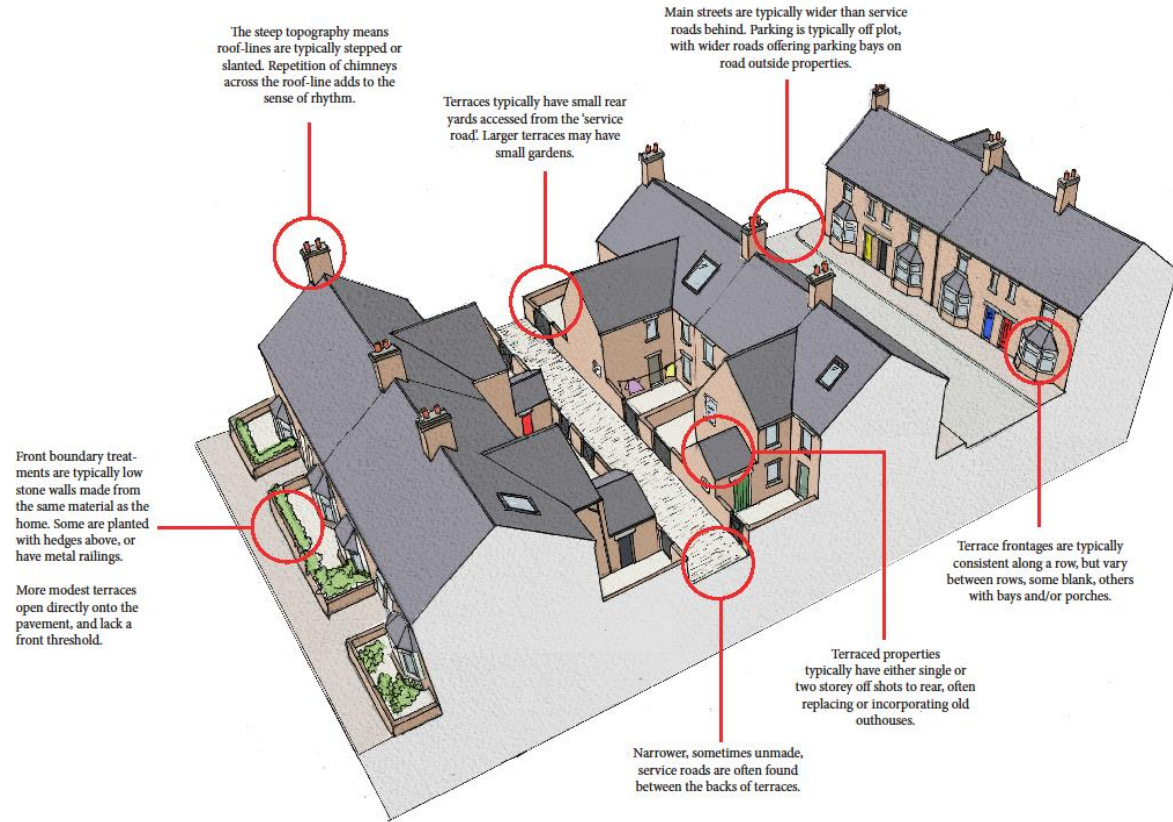
Engagement throughout design code process





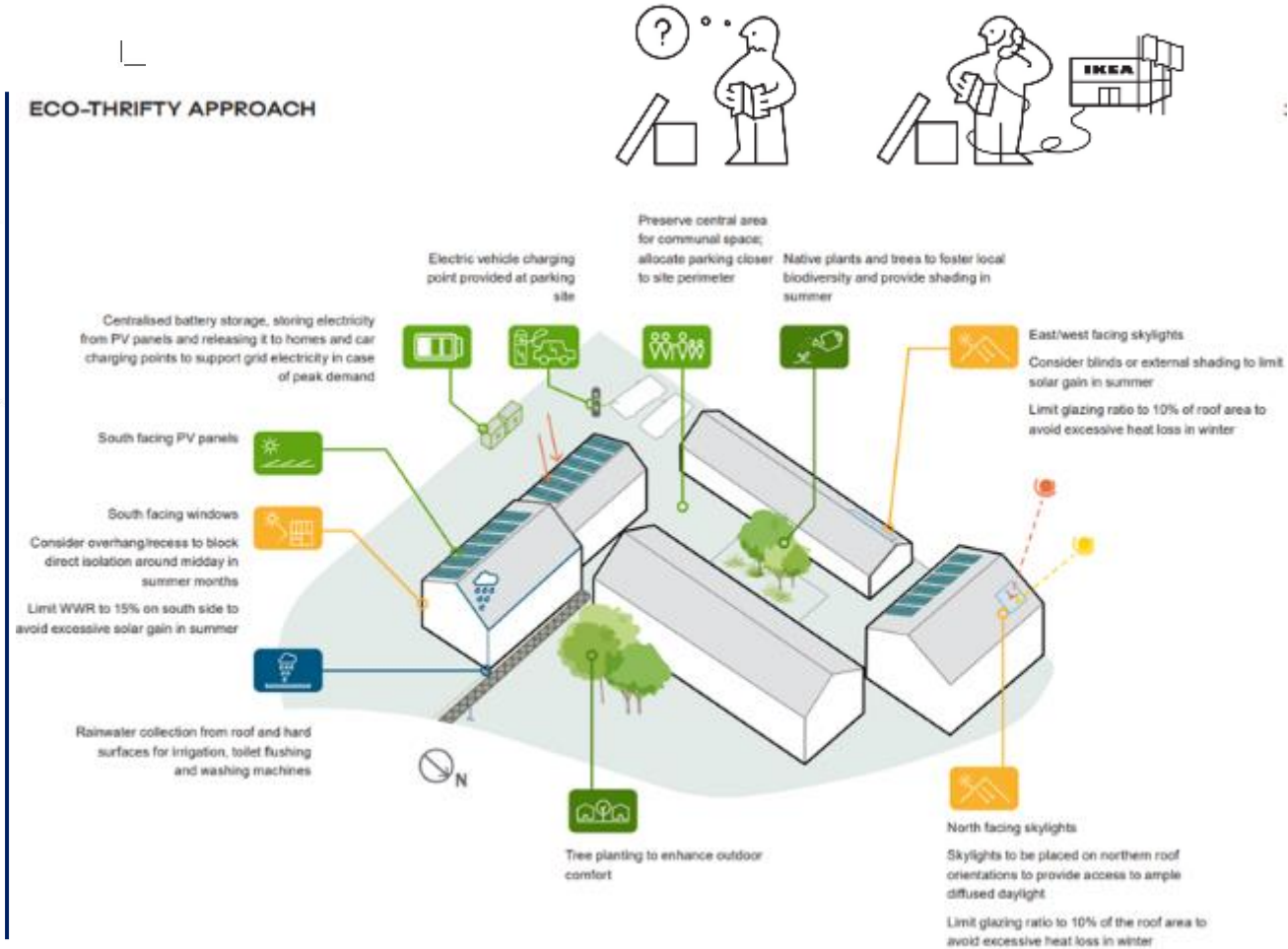
Reflecting local built form

Typical Bradford Terrace Character



Inner urban

ECO-THRIFTY APPROACH



Rural



Department for Levelling Up,
Housing & Communities

Q&A - design coding