

Personalised Care For Everyone

LGA conference 2018

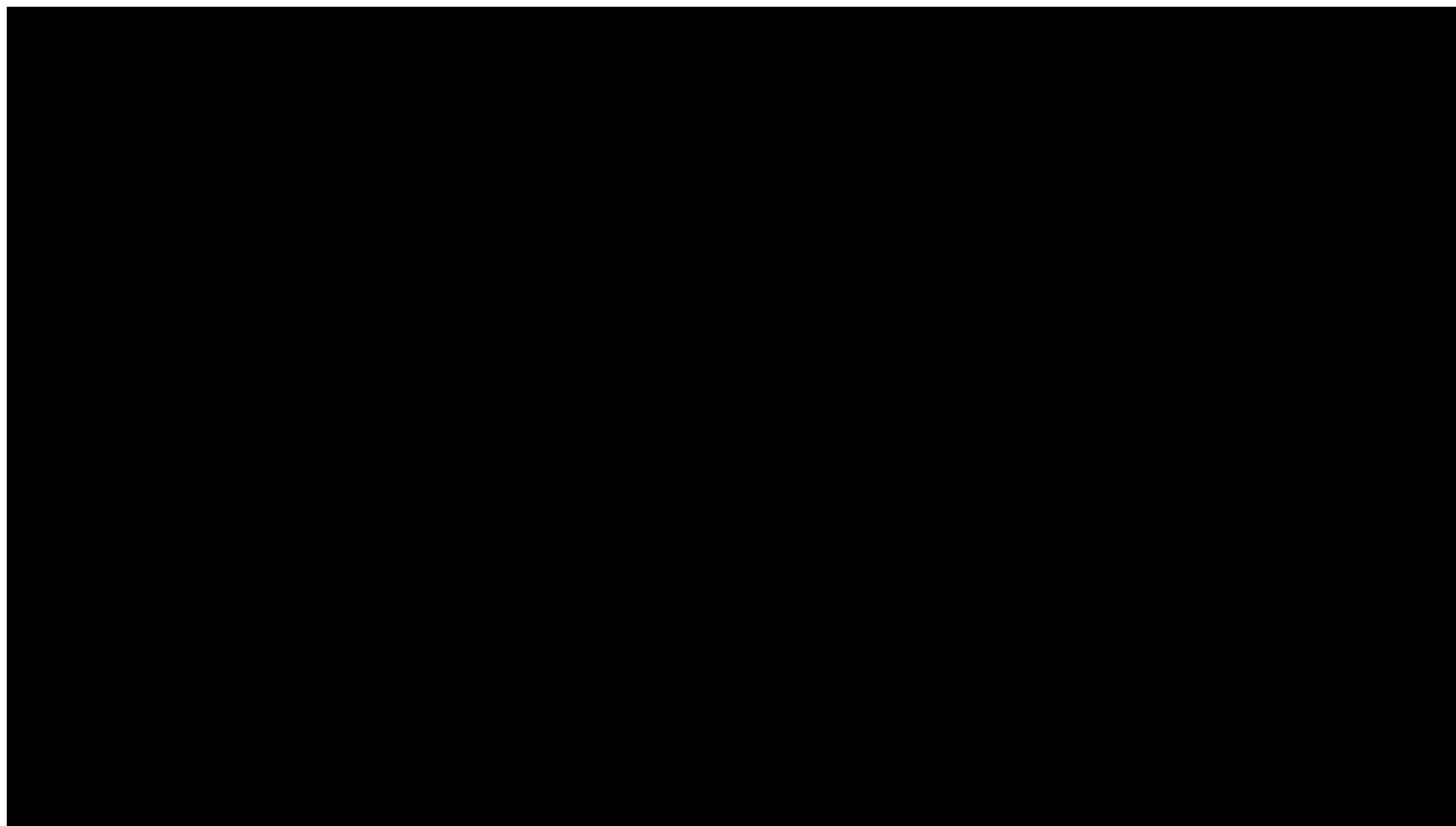
Nicola Kay, Deputy Director for Policy and Strategy
Personalised Care Group, NHS England

Glen Garrod, ADASS President and Executive Director of Adult Care
and Community Wellbeing, Lincolnshire County Council

Robyn Chappell, PHB Holder and Lived Experience Advisor

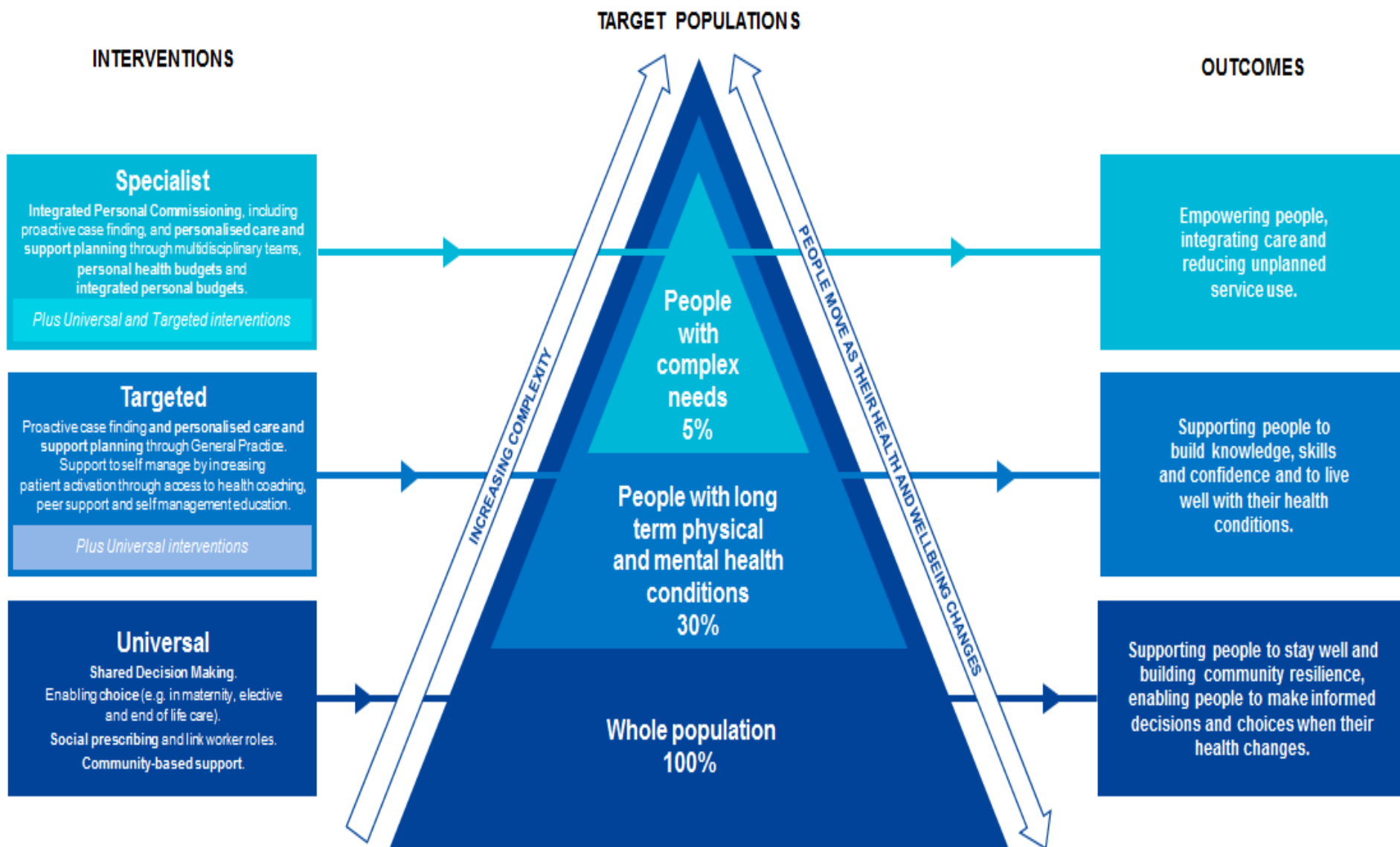


Comprehensive Personalised Care Model: ANIMATION



Comprehensive Personalised Care Model

All age, whole population approach to Personalised Care

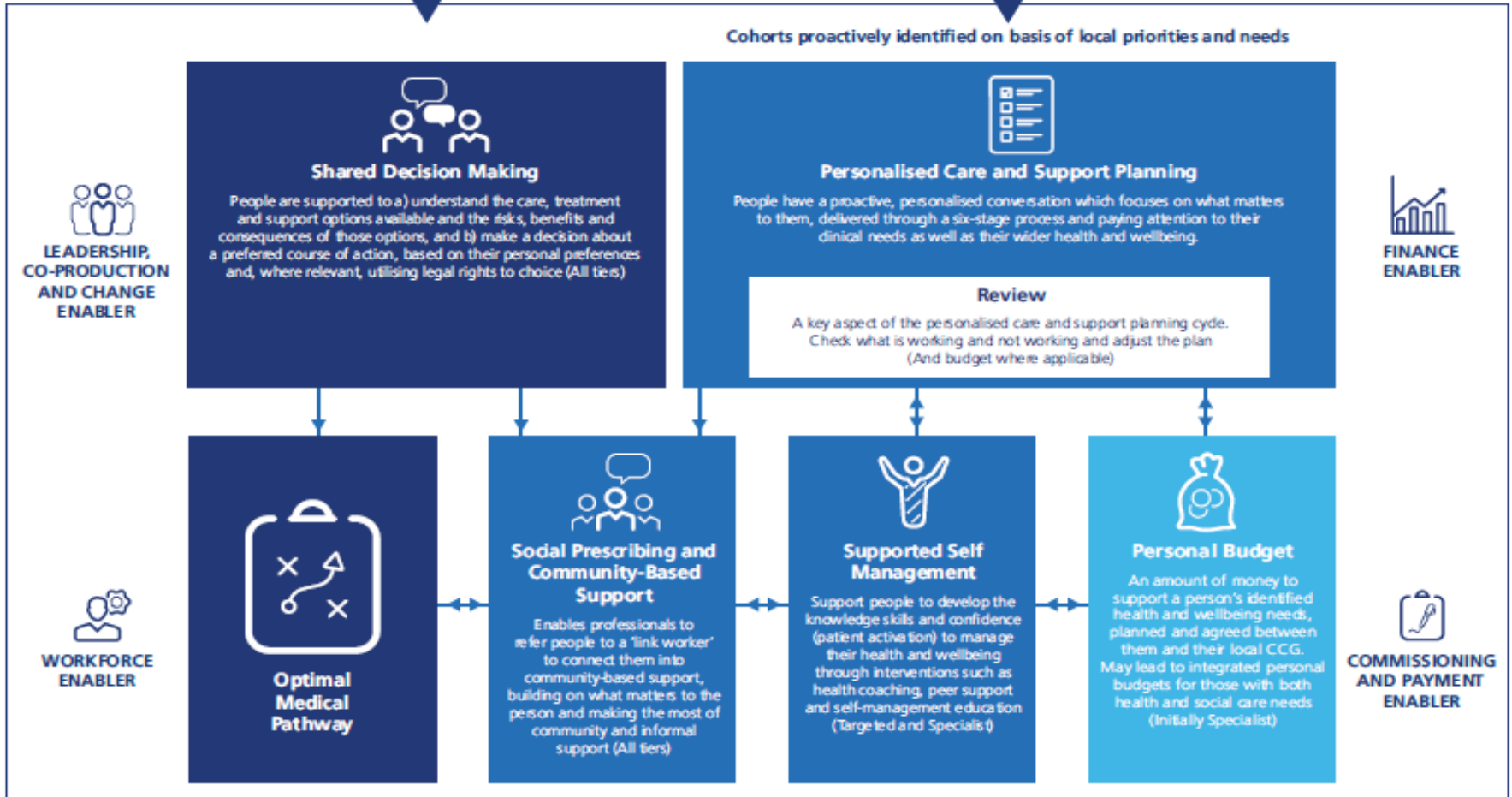


Personalised Care Operating Model

WHOLE POPULATION
when someone's health status changes

30% OF POPULATION
People with long term physical
and mental health conditions

Cohorts proactively identified on basis of local priorities and needs



IPC: Examples of Impact

Recent PHB Experience Survey showed:

- 97% of people experienced a positive change through having a PHB
- 77% of people would recommend PHBs to others
- 86% have achieved what they wanted to with their PHB

Across CONTINUING HEALTH CARE:

- PHBs resulted in direct savings of up to 17%;
- indirect savings of £4k per person

STOCKTON-ON-TEES Pilot showed IPC contributed to:

- 12% reduction in emergency admissions for older people with frailty
- 15% reduction in delayed transfers of care
- 10% reduction in A&E attendances

LUTON'S IPC programme is targeting frail elderly and people with dementia at high risk of admission, early findings showing indirect cost savings of **£23,800** per participant.

Delivery so far...

Personal Health Budgets (PHBs)

28,040
PHBs
(Mar 2018)
over half in
IPC sites

77%
increase on
previous
year

Integrated Personal Commissioning

173,143
people
covered

70k+
have
personal
care and
support
plan

Patient Activation

70,000
assessments
in 17/18

16,000
attended
formal self-
management
programmes

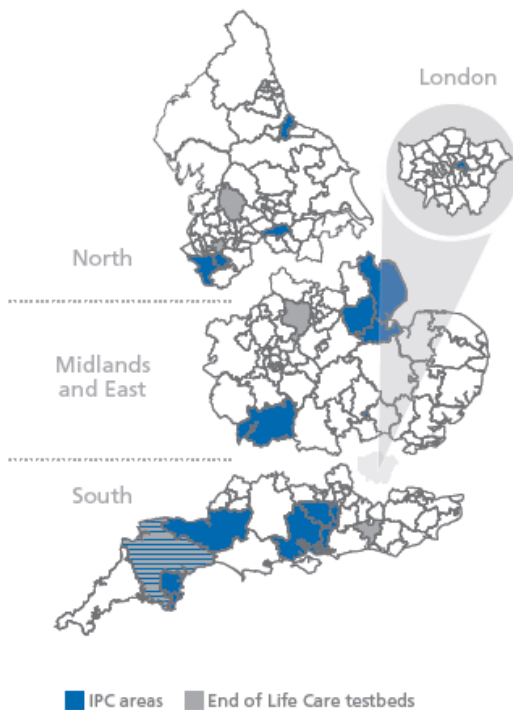
Maternity Pioneers

Nearly
19,000
PMCBs by
March 2018

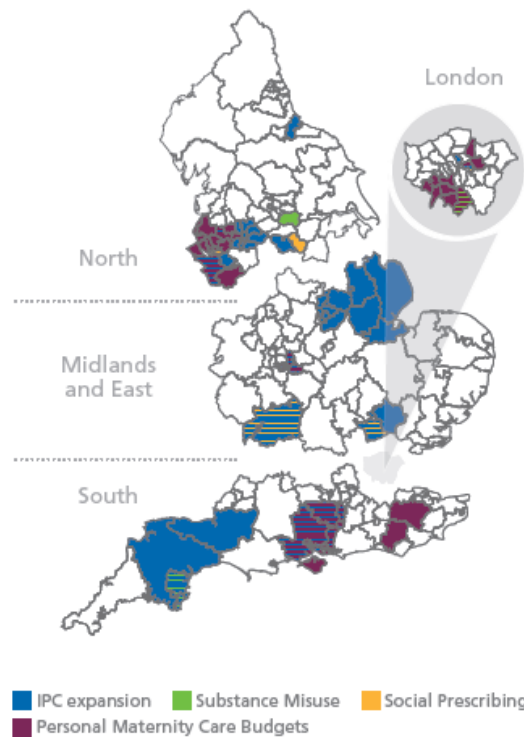
83%
CCGs
completed
choice self
assessment

Personalised Care: Increasing coverage across the country

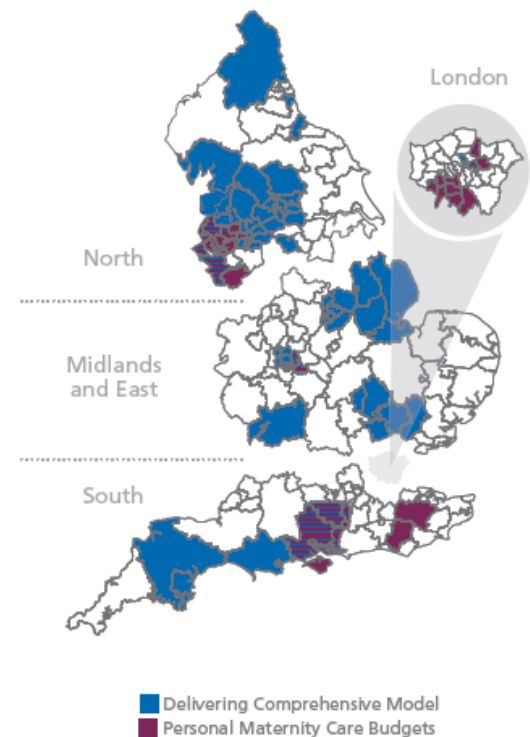
Original IPC areas (2016/17)



Expansion (2017/18)



Expansion (2018/19)



Potential Future Scale-up

- Current target to hit 40,000 PHBs and 300,000 benefitting from personalised care in 2018/19, and 50-100,000 PHBs by 2020/21

In future...

- 6 million people could benefit from personalised care
- Mainstream social prescribing and shared decision making in primary care
- Rapidly expand personalised care and support plans for people with long term conditions and complex needs
- Focus self-management support on people with long term conditions with low levels of activation – low knowledge, skills and confidence
- 500,000 people having a personal health budget

DEVELOP ACTIONS WITH PARTNERS

Personalised Care Board co-chaired by NHS England and the LGA

Further information

<https://www.england.nhs.uk/personalised-health-and-care/>

@personalisedcare

@NHSPHB

#personalisedcare #futurenhs

nicola.kay1@nhs.net @NHSNicola_Kay



‘Personalisation’ LGA Conference – 4 July 2018

**Overview by Glen Garrod
ADASS President**

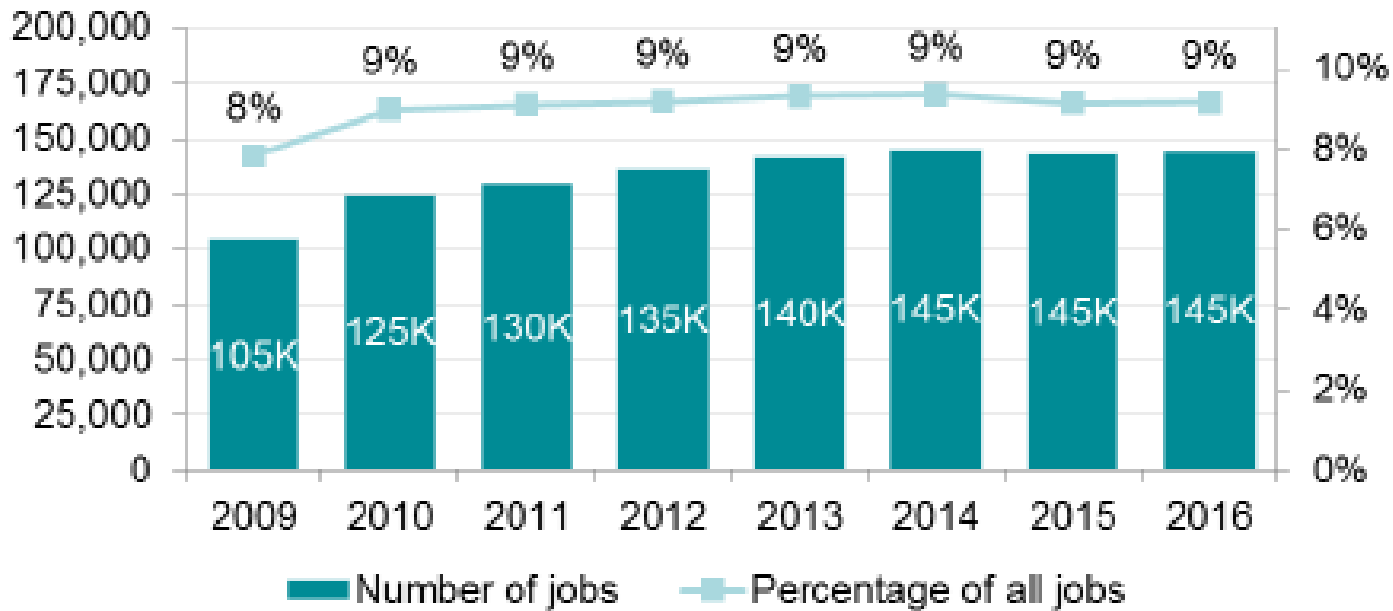
And

**Executive Director of Adult Care and Community
Wellbeing**

Lincolnshire County Council



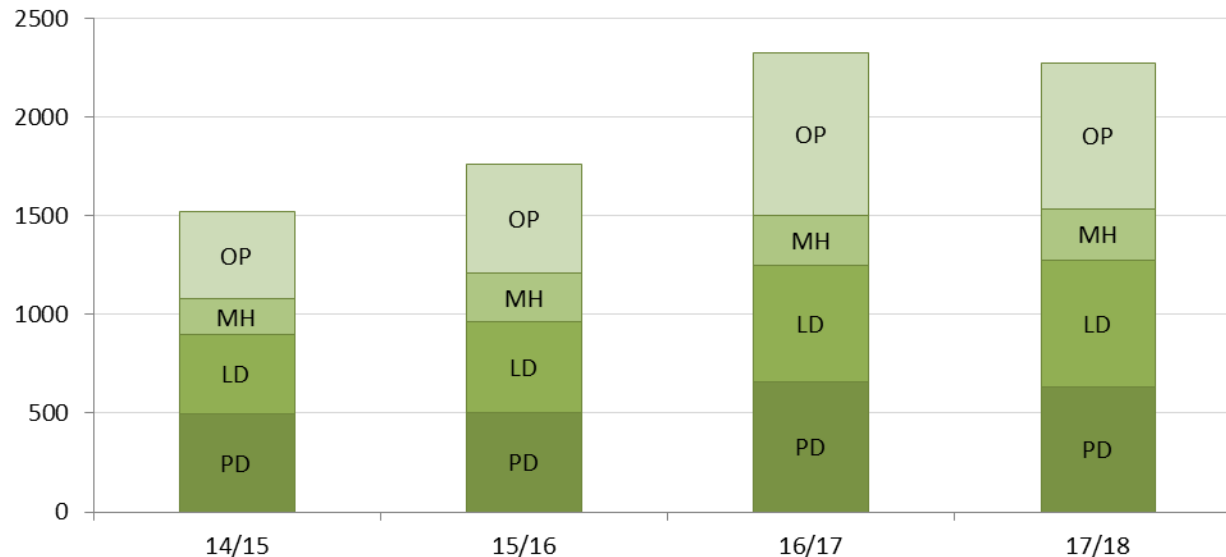
Estimated trend of jobs for direct payments recipients, 2009 - 2018



Direct Payments

Number of direct payment recipients per SU category
(2014/15 to 2017/18)

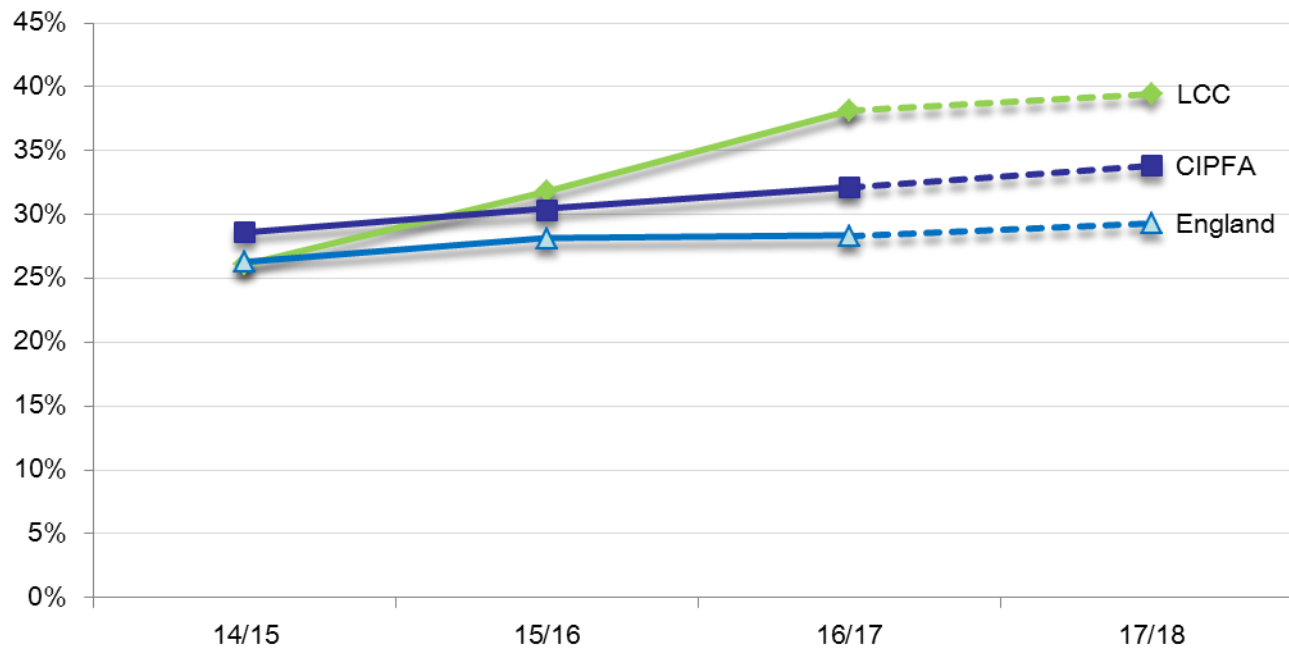
49% ↑
in 3 yrs.



Direct Payments

ASCOF 1C (2A): % Adults in the community receiving direct payments
(2014/15 to 2017/18)

Source: ASCOF / SALT LTS001b



Some useful caveats

- Personalisation is a philosophy requiring an appropriate approach in practice
- Choice and Control (a DP/ISF/PHB/IPB) is not for everyone
- Personalisation is most effective when targeted at individuals with specific conditions where self-management is possible.
- The use of behavioural science is critical in delivering people-orientated system change; get the engagement with service users wrong, and it will fail.



Contact Details

Glen Garrod
President of ADASS

glen.garrod@lincolnshire.gov.uk

Tel: 01522-550808

