

Kent County Council Research, Strategy, Delivery and Commissioning

Sarah Collins – Analyst Manager (Domestic Abuse Research Programme)
Serine Annan-Veitch – Project & Partnership Manager (Domestic Abuse)
Rachel Westlake – Senior Commissioner (Domestic Abuse)



Background

Domestic Abuse Research Programme

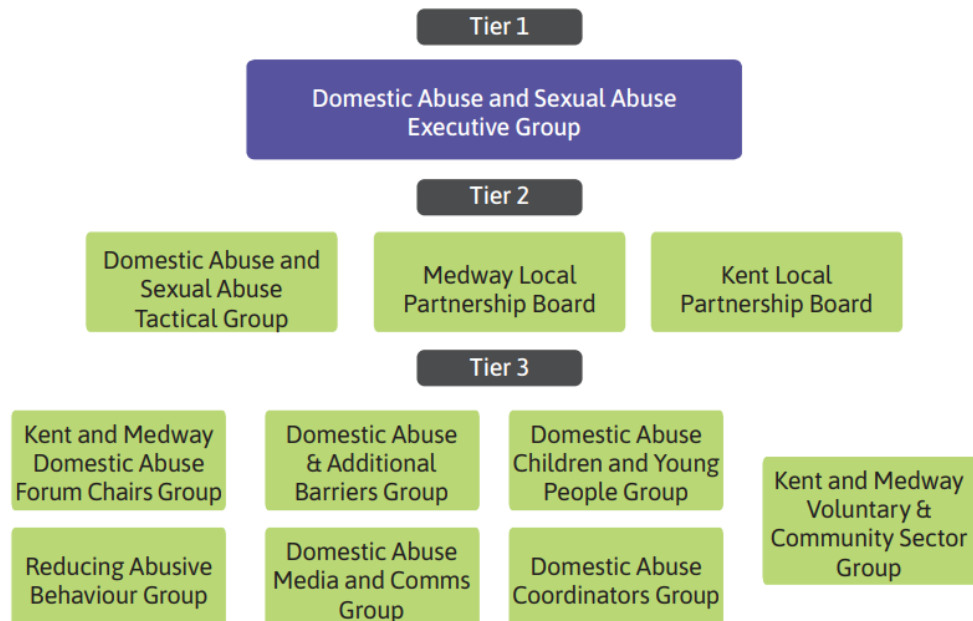
- Dedicated post financed through New Burdens Funding
- Statutory Duties – Needs Assessment / Lived Experience
- Bespoke/adhoc research projects

Kent County Council – Tier 1 Local Authority

12 district & borough councils

Medway Unitary Authority

Partnership approach

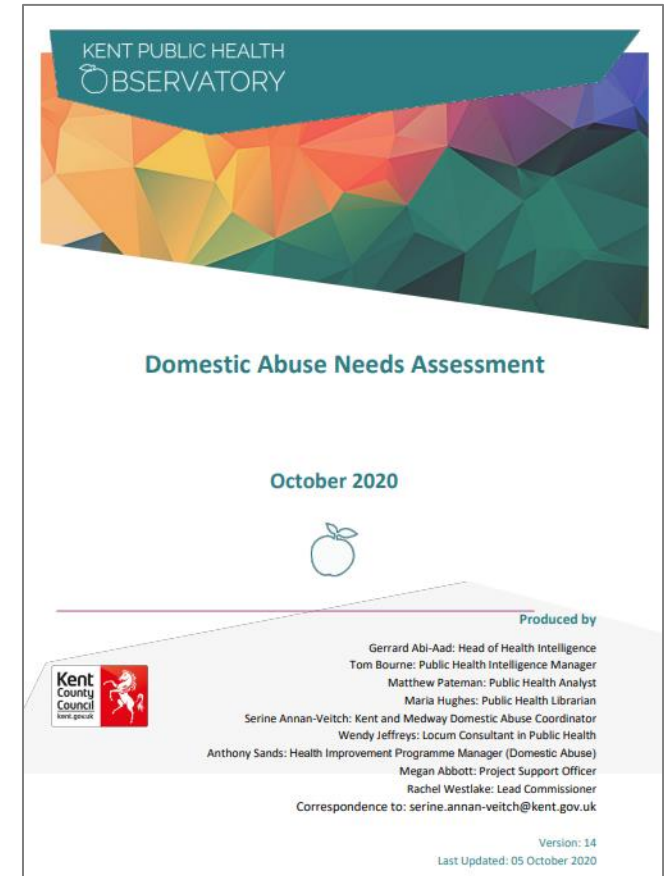


2020 Needs Assessment

Published October 2020 and covered Kent & Medway

Aims:

- Bring together available data across Kent & Medway Domestic Abuse & Sexual Abuse Executive Group, to understand what data is available, and how this data may need to be developed and improved to support requirements moving forward
- Use available data to describe levels of domestic abuse in Kent and Medway, and to understand if/how, these vary by equity characteristics
- Help form a benchmark from which the ongoing assessment of domestic abuse in Kent & Medway can be measured



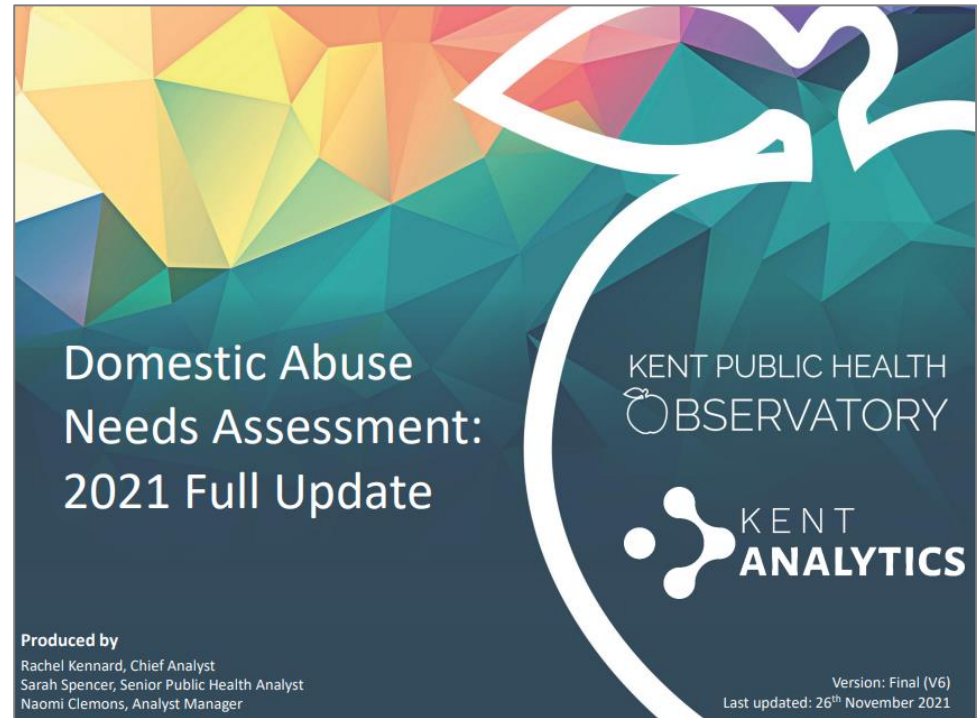
www.kpho.org.uk/joint-strategic-needs-assessment/health-intelligence/population-groups/domestic-abuse#tab1

2021 Needs Assessment

Published November 2021 (Kent only)

Aims:

- Update of key metrics around prevalence and profile of domestic abuse in Kent
- Develop understanding of available safe accommodation, exploring who can access support, how people are referred, why people cannot access support and any issues around moving on
- Qualitative – male survivors / providers of domestic abuse support

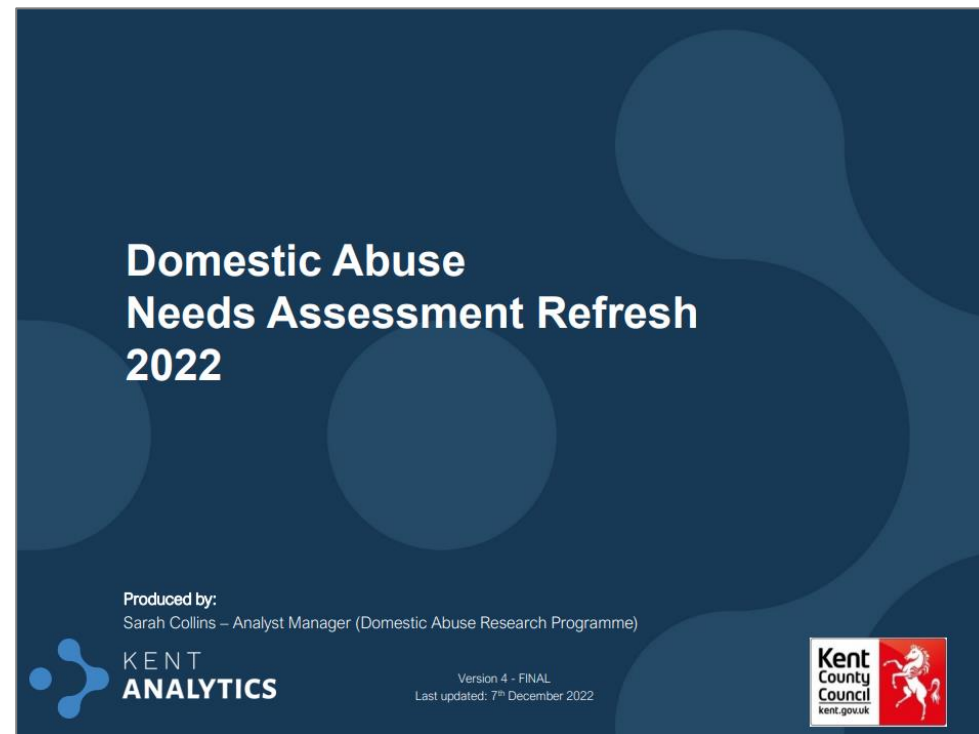


2022 Needs Assessment

Published December 2022 (Kent only)

Aims:

- Update of key metrics around prevalence and profile of domestic abuse in Kent
- Develop an understanding of domestic abuse in relation to children & young people (C&YP), exploring prevalence, current service provision, models of care and what C&YP say they need in terms of support and education around domestic abuse
- Qualitative – C&YP affected by domestic abuse and providers of domestic abuse support

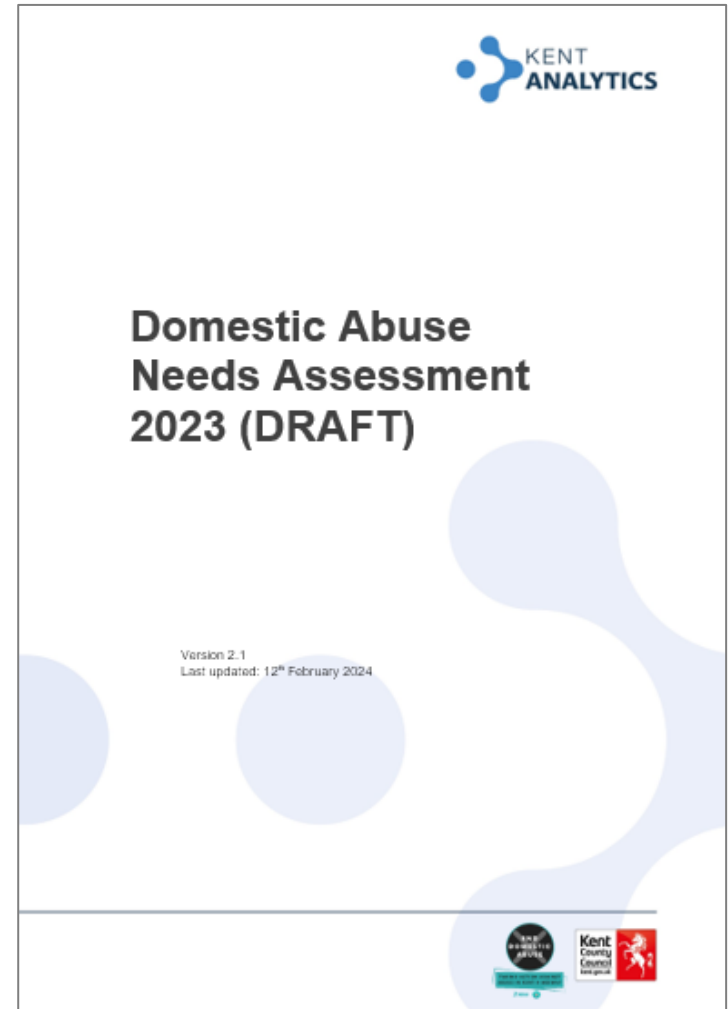


2023 Needs Assessment

Due to be published February 2024 (Kent only)

Aims:

- Understand the local prevalence of domestic abuse in Kent
- Identify current service provision (including other-community based support)
- Explain Kent's demographics and compare to service use
- Qualitative – only case studies / in-depth qual in other reports



Needs Assessment recommendations

- Needs Assessment recommendations
- Delivery plan – action owners
- Progress reported through governance structure



Safe accommodation gaps identified through Needs Assessment analysis:

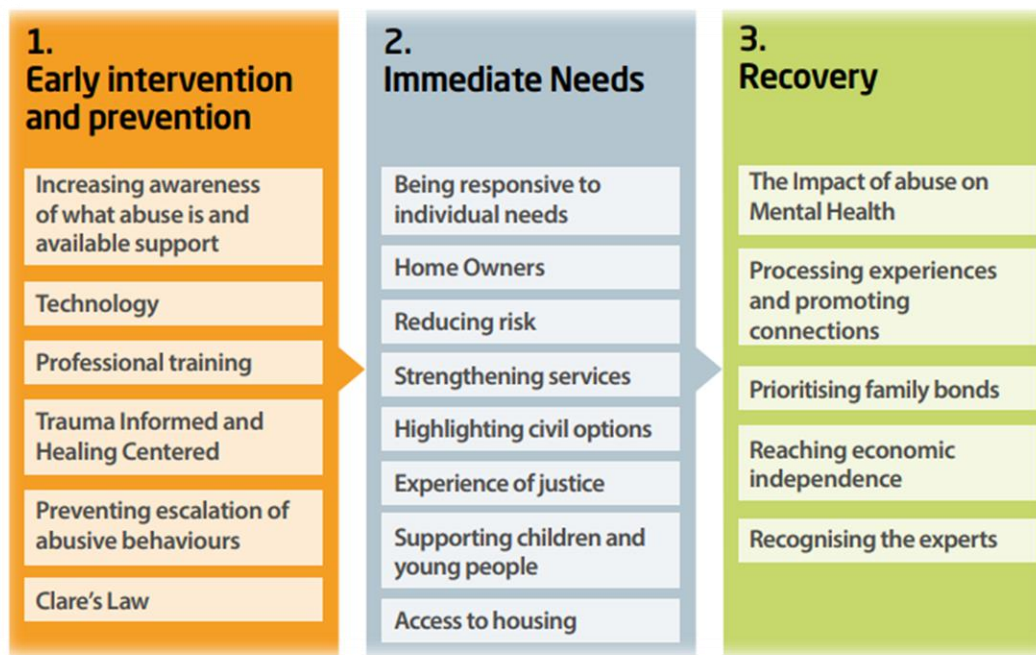
1. Access to services for people with multiple barriers such as dependency and mental health support requirements
2. Access to secure secondary accommodation options when moving out of refuge or other safe accommodation
3. Support services for children and young people in safe accommodation
4. Provision in Sanctuary schemes vary across the county, meaning some people may get more robust support in one scheme compared to another
5. Increase safe accommodation support options for males who have experienced domestic abuse

Kent & Medway Domestic Abuse Strategy

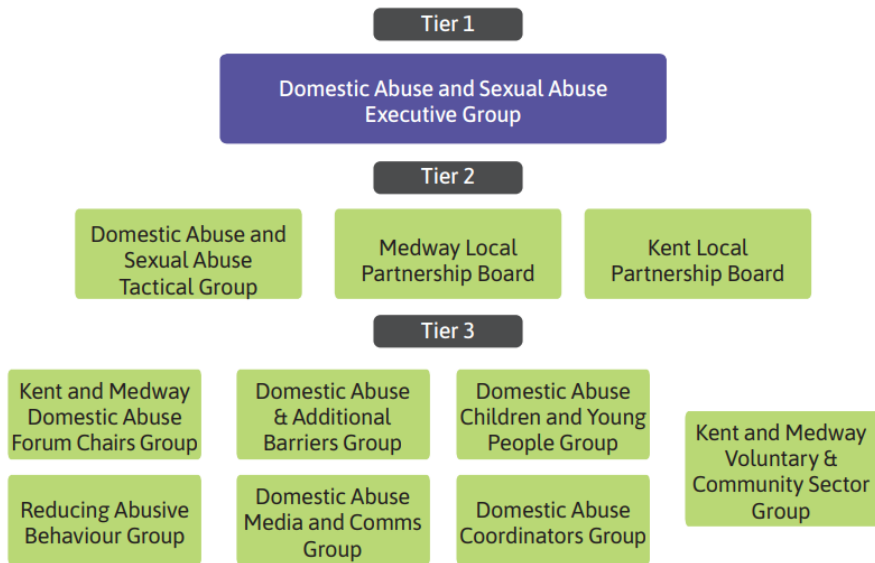
Kent & Medway DA Strategy



Kent & Medway DA Strategy



Delivery plan



Co-Occurring Conditions	DA Data & Evidence	DA CYP	DA Forum Chairs	DA Coordinators	Reducing Abusive Behaviour	DA Media and Communications	MARAC Steering Group
3d	1.3a	2.1a	2.1c	SA1.1ba	1.7b	Phase One	SA6.4a
4e	1.4a	2.1b	2.1d	SA1.1bb	4.5a	1.2a	4.3a
SA3.2a	2.3c	2.2a	2.2c	SA1.1ca	4.5b	2.3a	4.6e
	3.1a	2.2b	2.3b	SA1.1da	4.5c	2.3c	4.9a
	3.4c	2.2d	2.4b	SA2.3a	5.2a	2.4a	5.3a
	3.6a	2.4c	2.4d	SA4.3a	5.2b	2.5c	5.6a
	SA1.1aa	2.6a	3.8c		5.2c	3.4d	DHR 39 Actions
	SA3.4a	SA4.2ba	SA1.2a		5.3b	3.6b	39 - 4a: Amber
	SA6.4	SA 6.5a	SA2.6a		5.3c	SA1.2a	39 - 4b: Amber
	4.2b	4.5d	SA2.6b		5.3d	SA5.5a	39 - 9a: Green
	4.4a	4.6e	SA4.3b			4.1d	39 - 9b: Amber
	4.6d	4.10a	4.1a			4.6c	
	5.1e	5.4a	4.1b - DHR Rec			4.7a	
		5.4b	4.2a			5.1b	
						5.5a	
						5.3c	
						Phase Two	
						2.2c	
						2.5c	
						3.3b	
						3.5a	
						SA5.3a	
						4.6b	
						4.7a	
						5.1b	
						5.2c	

Domestic Abuse Commissioning response

Kent DA Services (prior to the Act)

Adults

Aim - to provide a holistic, flexible model of support to victims (16+) of domestic abuse, focussing on early intervention and maintaining independence for victims and their families, reducing the impact of domestic abuse on families and communities, and keeping people safe.

Delivery – Countywide, split into 3 service elements, delivered by 4 x Providers (Victim Support, Oasis, Clarion and Look Ahead)

Kent Integrated Domestic Abuse Service

Element 1 - Referral, Assessment & Triage Service

- Delivered by Victim Support

Referral, Assessment & Triage Service

Receives referrals, completes DASH, refers on to support provider and offers preventative advice and support to low risk cases

Element 2 – Core Community service

- Delivered by Oasis, Clarion & Look Ahead
- Includes accommodation AND community-based support

Core community service - Accommodation based support

- 107 refuge beds across the county for survivors and their children.
- Domestic abuse support for adults residing in refuge including therapeutic programmes such as Phoenix / Freedom

Core community contract - Community-based support

- IDVA (for High risk)
- Outreach (for medium risk)
 - Welfare offer
- Multi-agency access points
- Private rent access scheme

Element 3 – Training, Education and Awareness Service

Countywide, delivered by Oasis, Clarion and Look Ahead

Training, Education and Awareness service

- Includes training and awareness campaigns

Commissioning response

Gap 1 - Access to services for people with multiple barriers such as dependency and mental health support requirements

Gap 2 - Access to secure secondary accommodation options when moving out of refuge or other safe accommodation.

Kent Integrated Domestic Abuse Service

Specialist IDVA

- Originally Grant funded, DA Act funded since 2021

Provides support within refuge across the county for those with co-occurring conditions

Enhanced Therapeutic Support

- DA Act funded

Provides enhanced and responsive therapeutic support and additional provision for those with co-occurring conditions (16 years+) to improve access to refuges

Tenancy Support Workers

- DA Act funded since 2021

Aims to improve move on opportunity from refuge, raise awareness of DA in the housing market and support tenancy sustainment

Commissioning response

Gap 3 - Support services for children and young people in safe accommodation

Short term response

Support services spot purchased by refuge providers whilst robust service offer was developed and procured



Safe Accommodation Support Service

Provides support for Children and Young People (0-19 years, up to 25 with additional needs) residing in all forms of Safe Accommodation

Offers;

- therapeutically informed 1-1 and Group based support,
- development of talents and interests and support to access activities/social groups,
- re-establishing a sense of routine and familiar activities,
- multi-agency engagement and advocacy
- package of workforce development for KCC Integrated Children Service teams

Commissioning response

Gap 4 - Provision in Sanctuary schemes vary across the county, meaning some people may get more robust support in one scheme compared to another.

Sanctuary Access For Eligible Residents Scheme.

Designed to expand Kents safe accommodation support offer and:

- Enable people to remain in their own home, where it is safe to do so
 - Improve health & wellbeing
 - Improve safety

Works with and complements all other commissioned services for adults and children

Single Point of
Access

**VS VICTIM
SUPPORT**

Receives, completes
DASH and manages
onward referrals

Property
Security



Assessment of
property, perimeter,
installation of
equipment and
provision of security
advice

Support
package for
adults



Support offer
through KIDAS
contract

Support
package for
Children



Support offer
through SASS
contract

Commissioning response

Gap 5 – Increase safe accommodation support options for males who have experienced domestic abuse

Male refuge pilot (18 months)

Aims

- To provide safe accommodation for males fleeing domestic abuse, regardless of their marital status, race, religion, sexuality, age, nationality, disability, or whether they have children.
- To empower residents, through support and advice so that they can successfully move on to independent living, free from abuse.

Went live December 2023



In partnership with Kent County Council, Clarion Housing Domestic Abuse service are now offering safe refuge accommodation with support, specifically for **Male** victims of domestic abuse.

For more information or to make a referral call Clarion on:

01322 389 138

Or email us at: supported.housing@clarionhg.com



If you or somebody you know is at immediate risk call 999.

