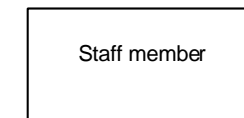
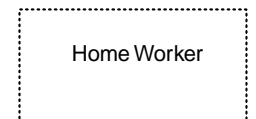
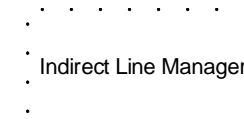
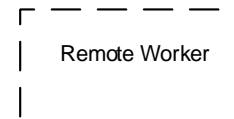
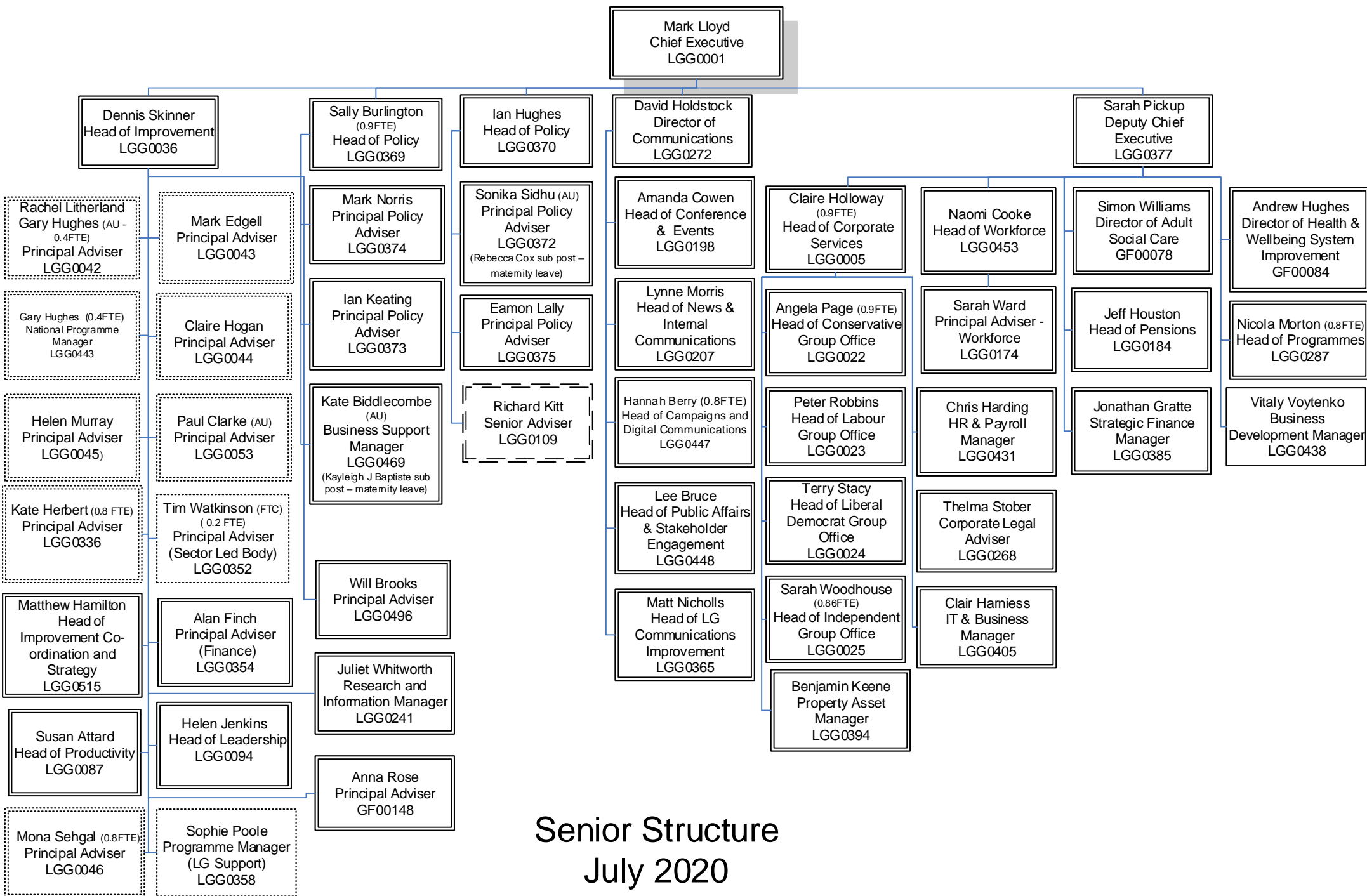




# Local Government Association Organisational Chart July 2020

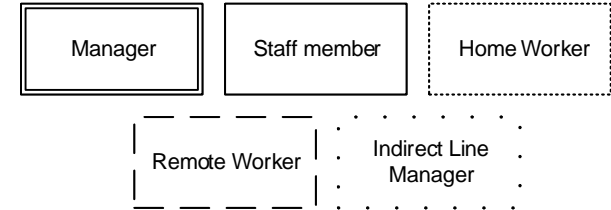


To contact an LGA colleague via email, their email address will be `Firstname.Sumame@local.gov.uk`



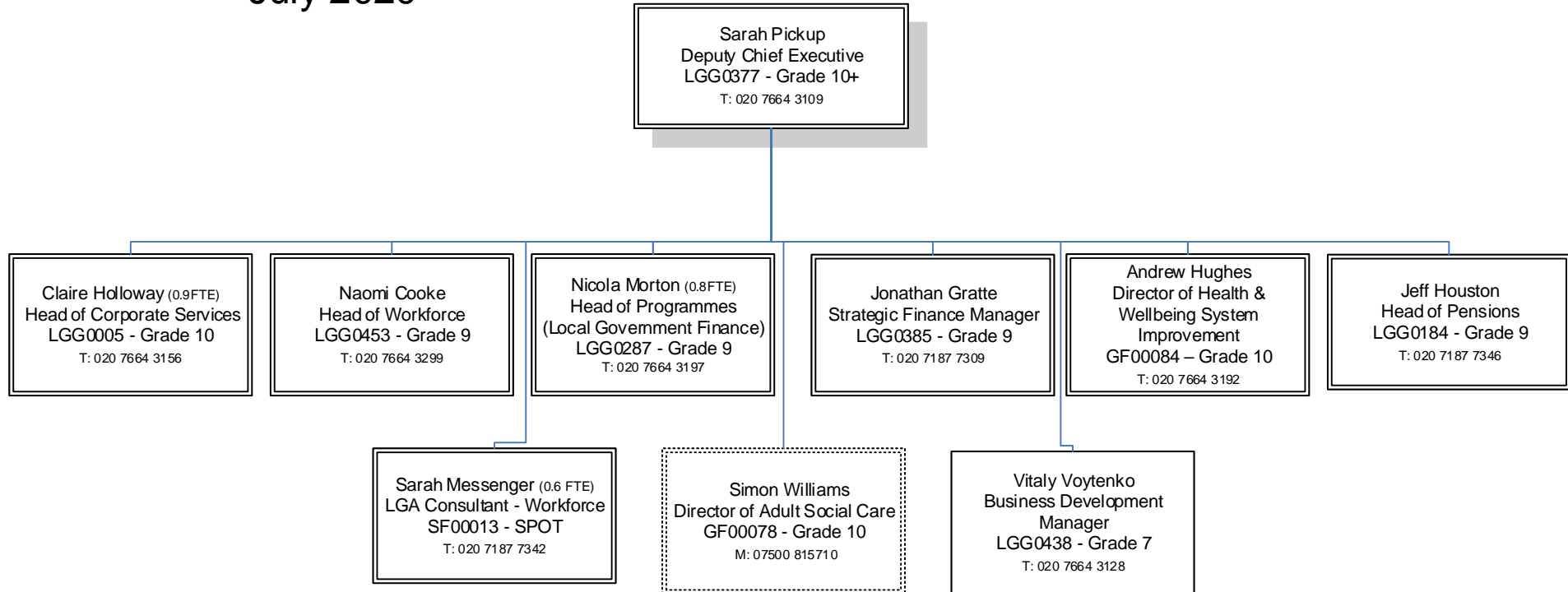
## Senior Structure July 2020

Key

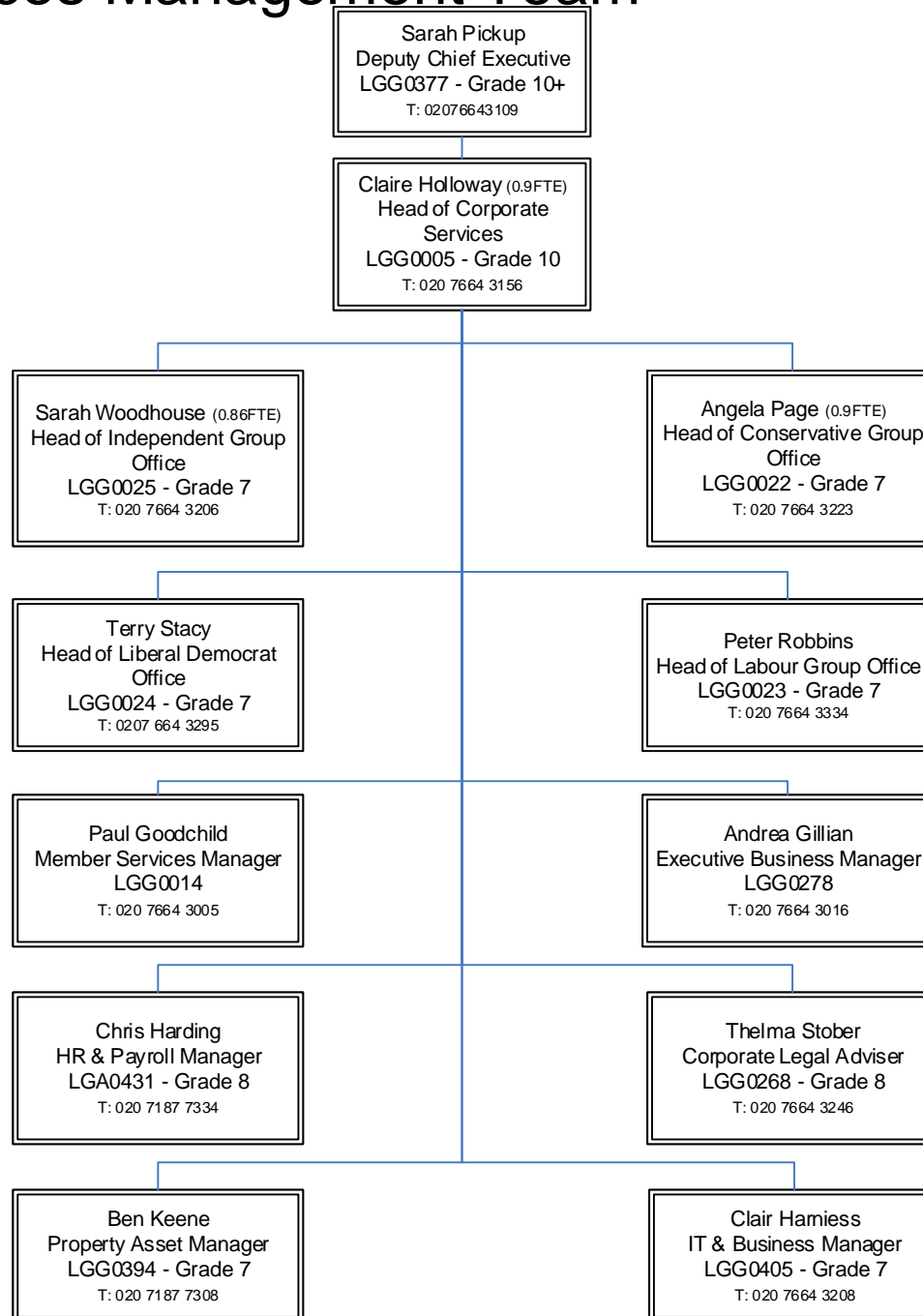


# Deputy Chief Executive Directorate

July 2020

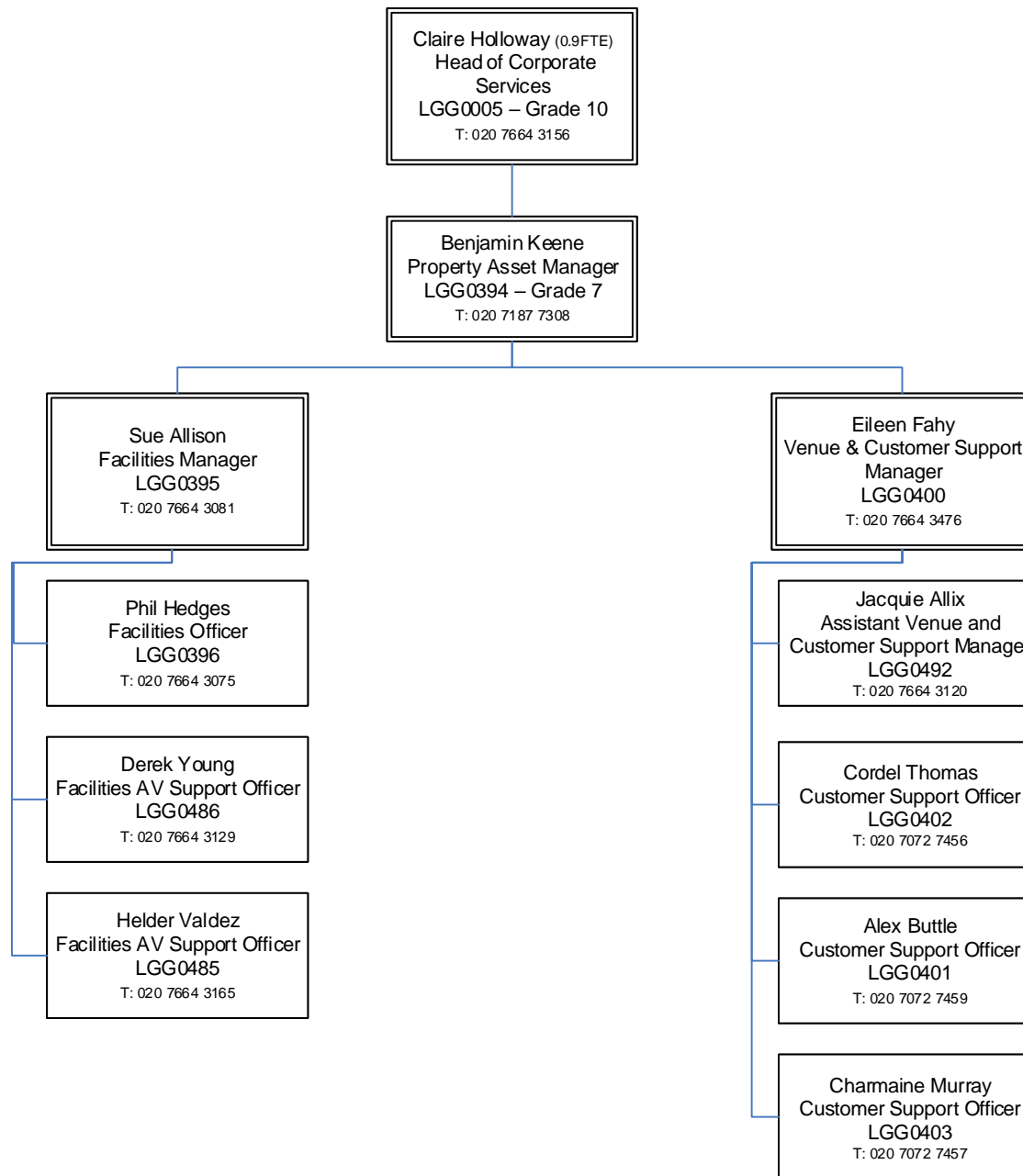


# Corporate Services Management Team

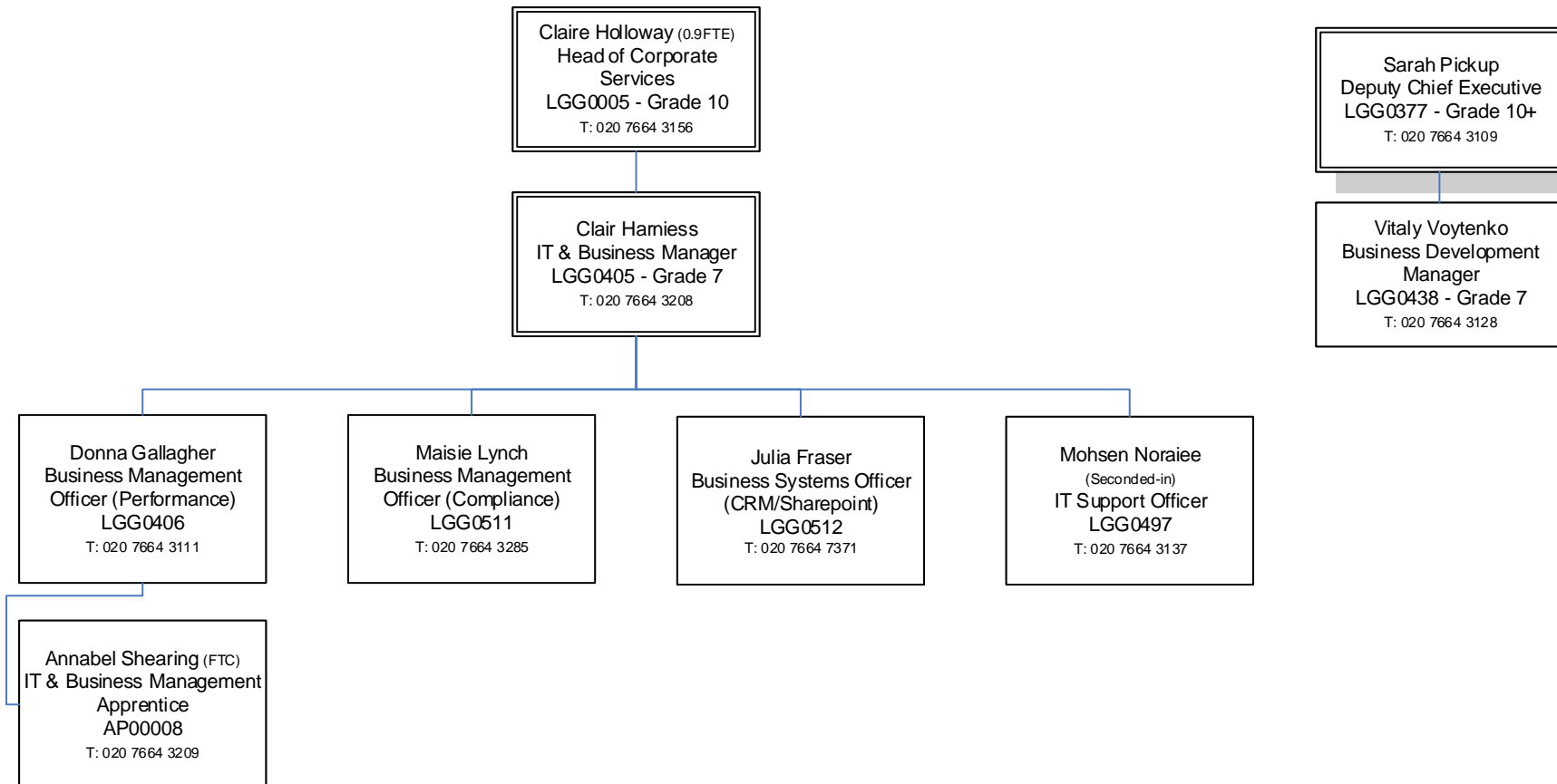


To contact an LGA colleague via email, their email address will be [Firstname.Sumame@local.gov.uk](mailto:Firstname.Sumame@local.gov.uk)

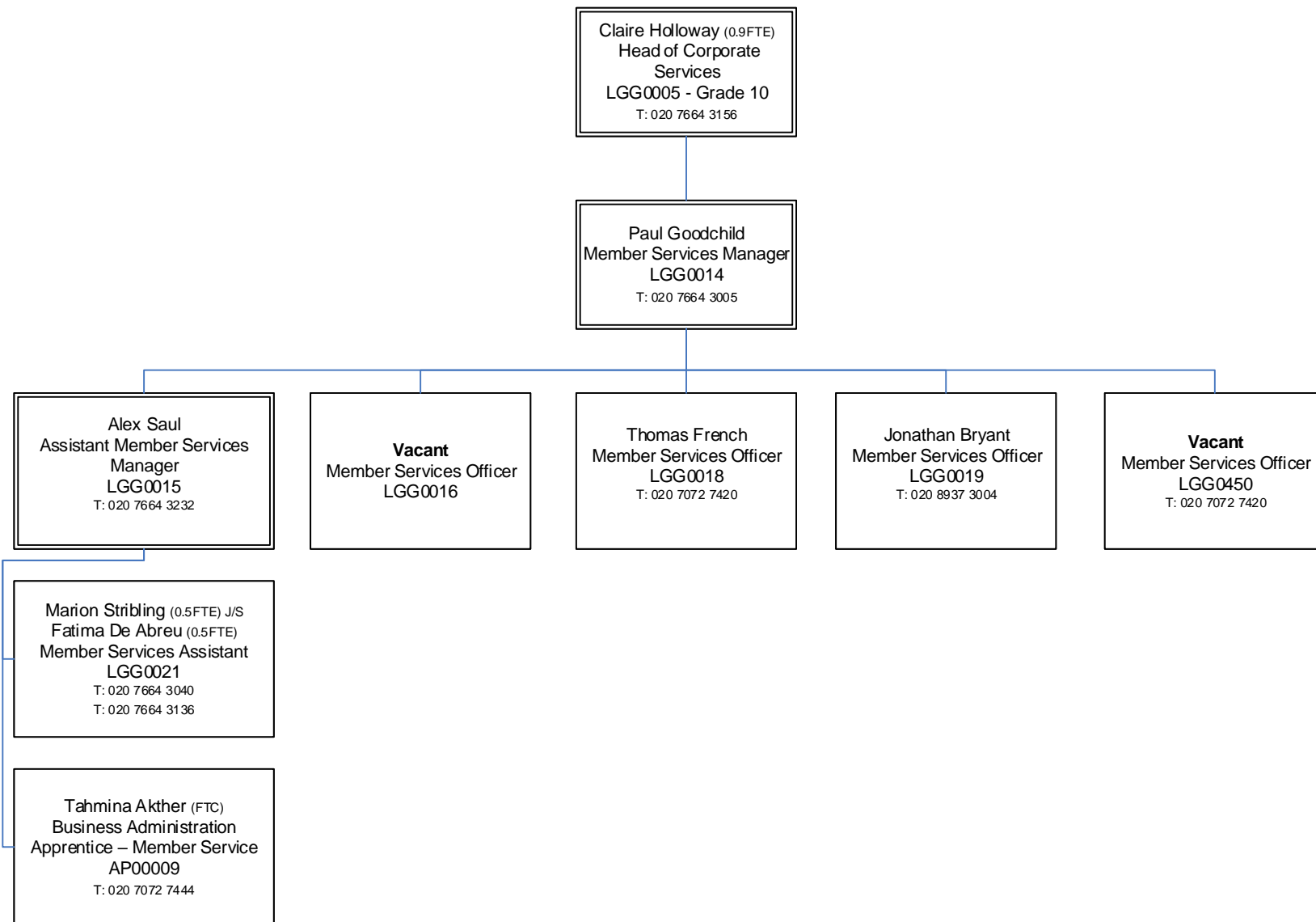
# Property Asset



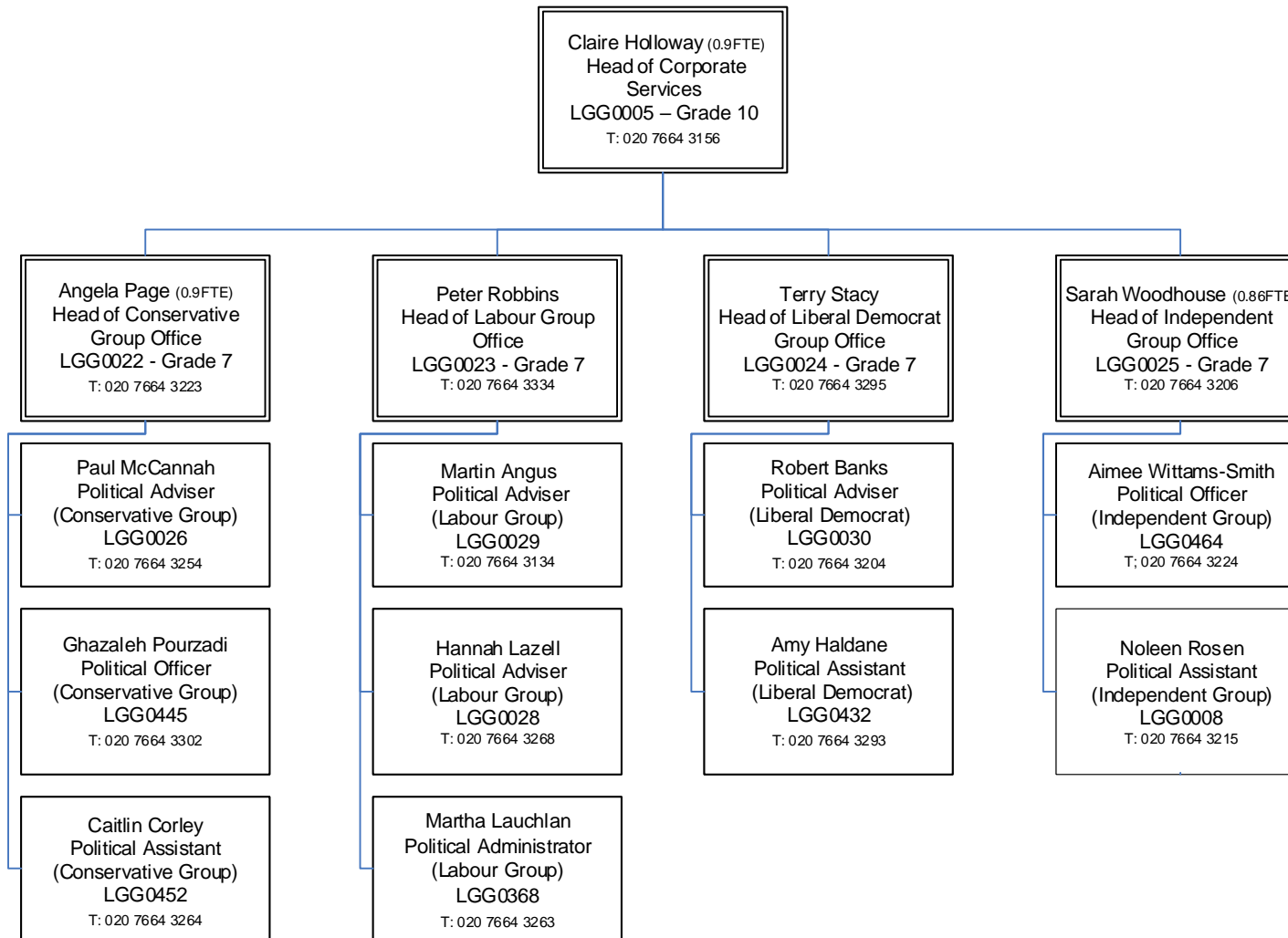
# IT & Business Management



# Member Services

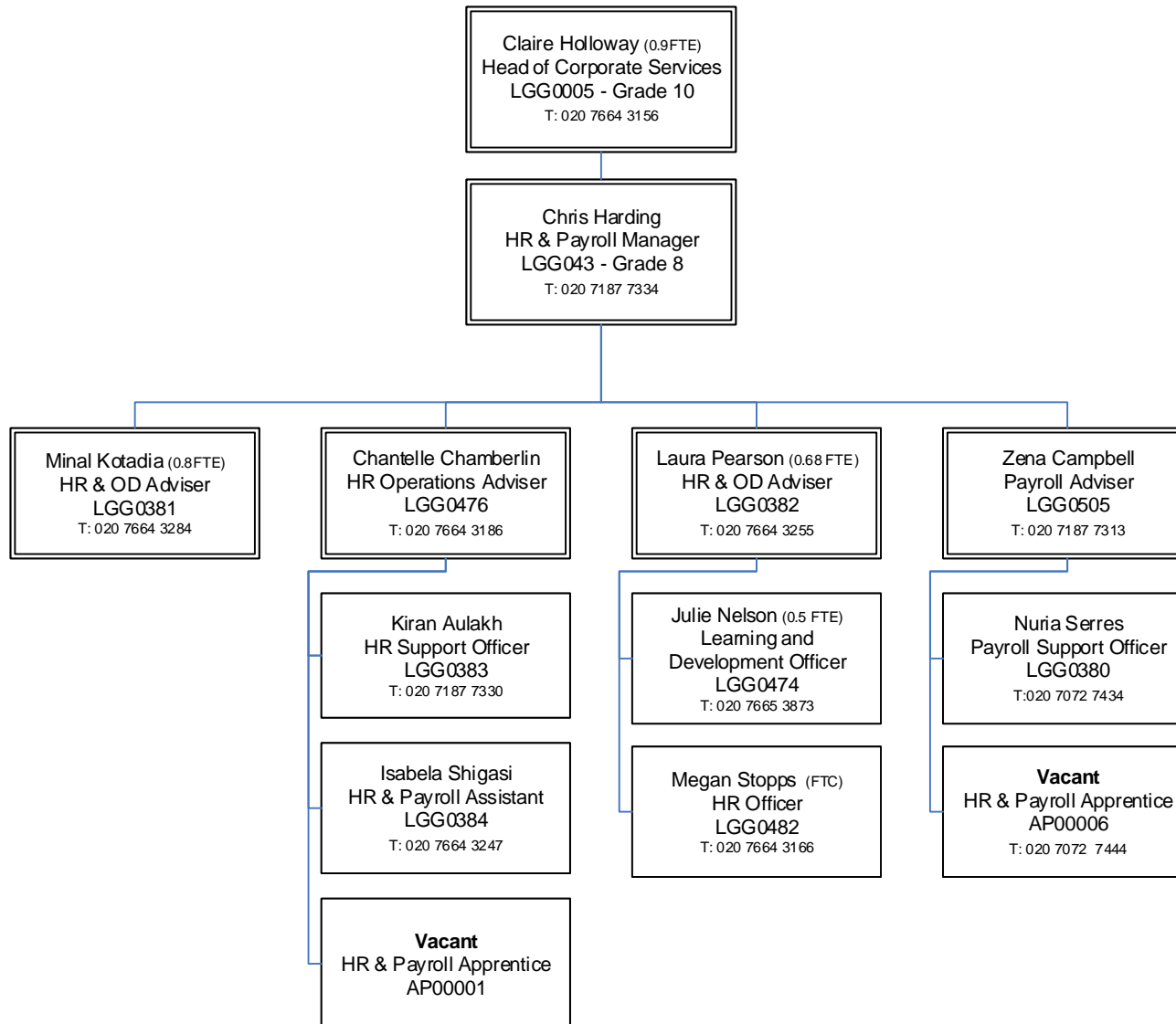


# Political Group Offices

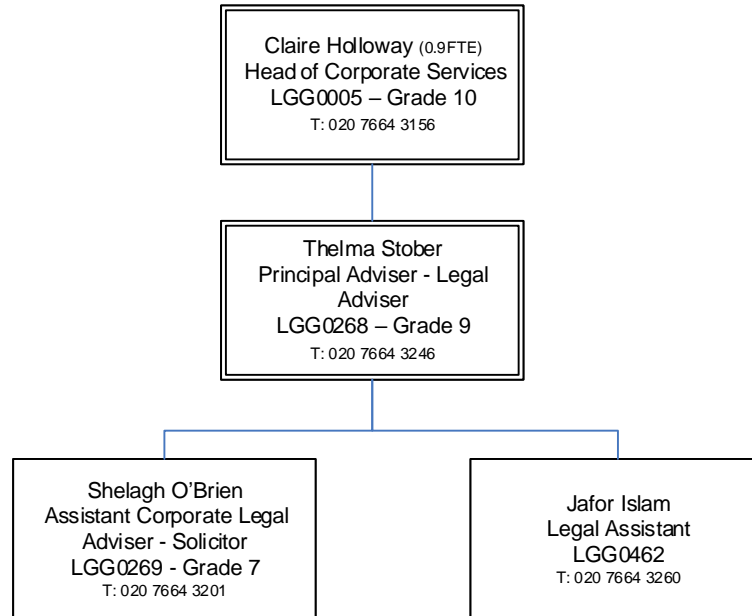




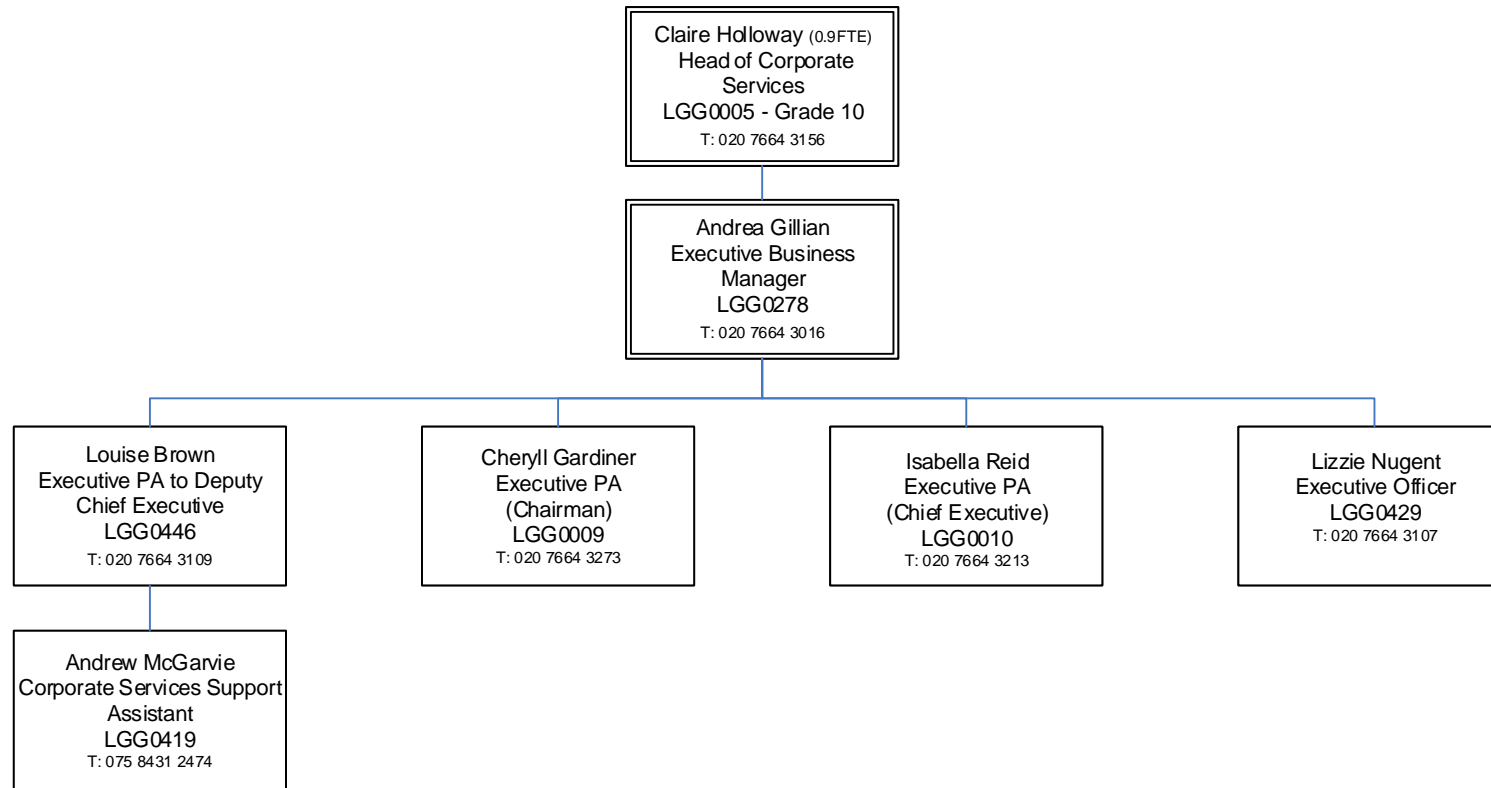
# HR & Payroll



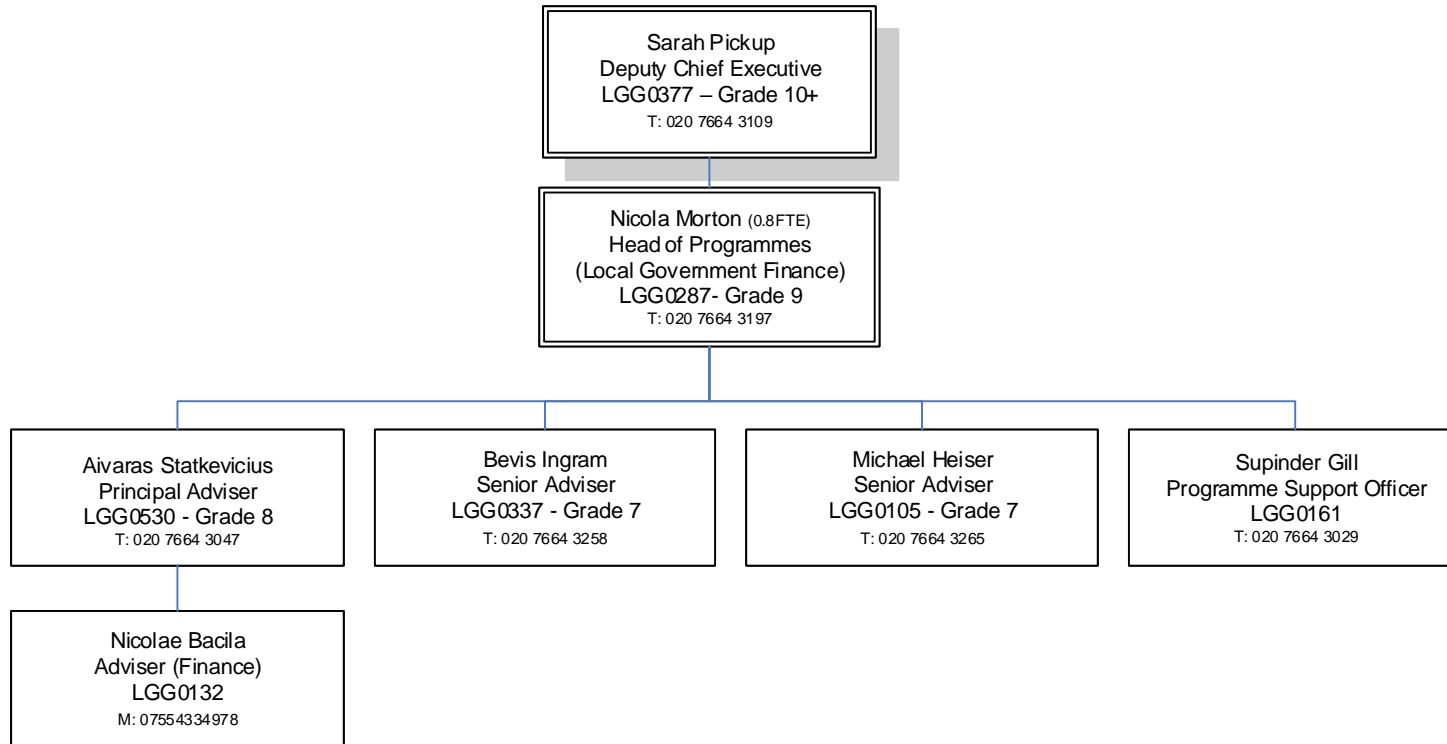
# Legal Team



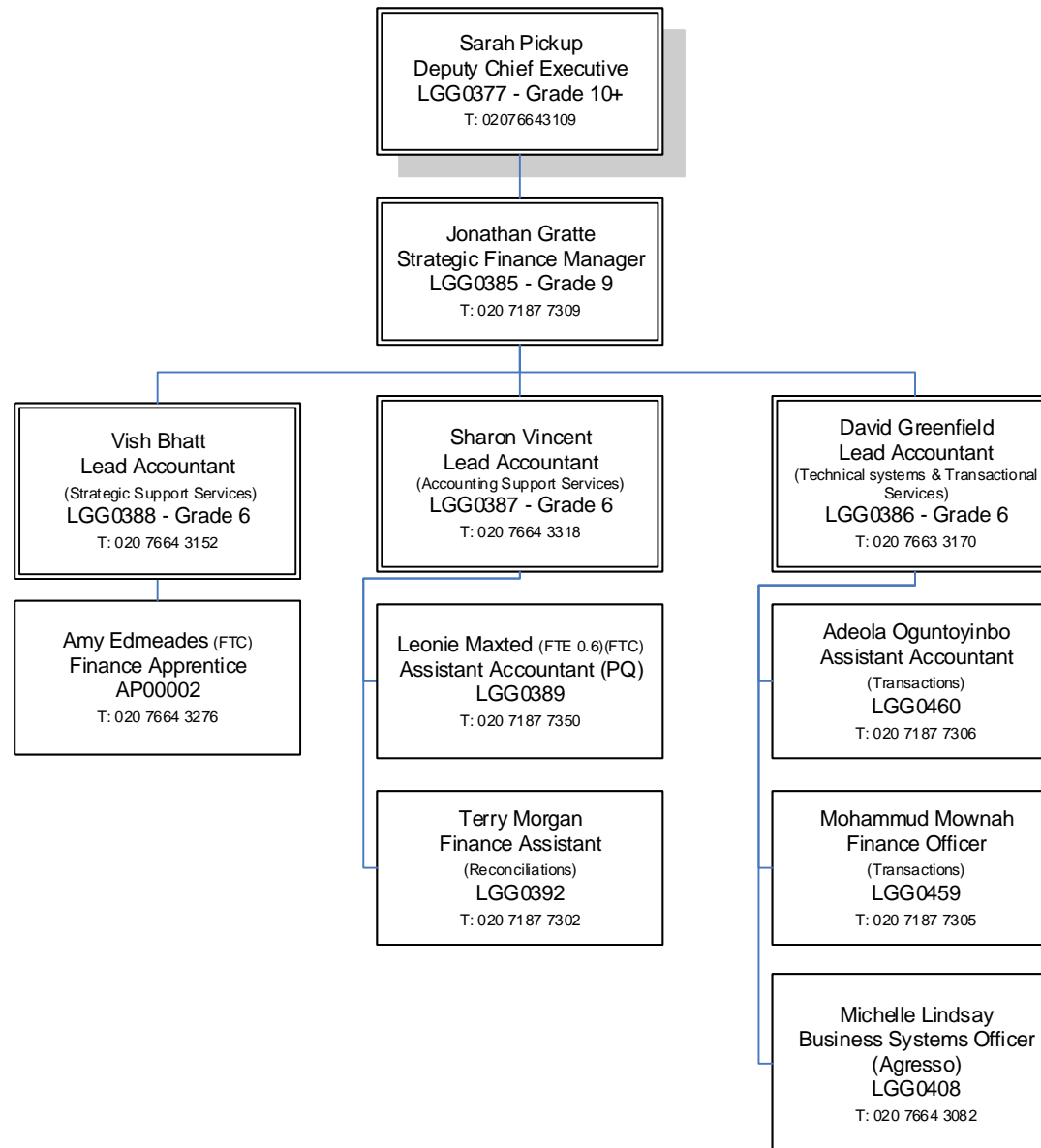
# Executive Business



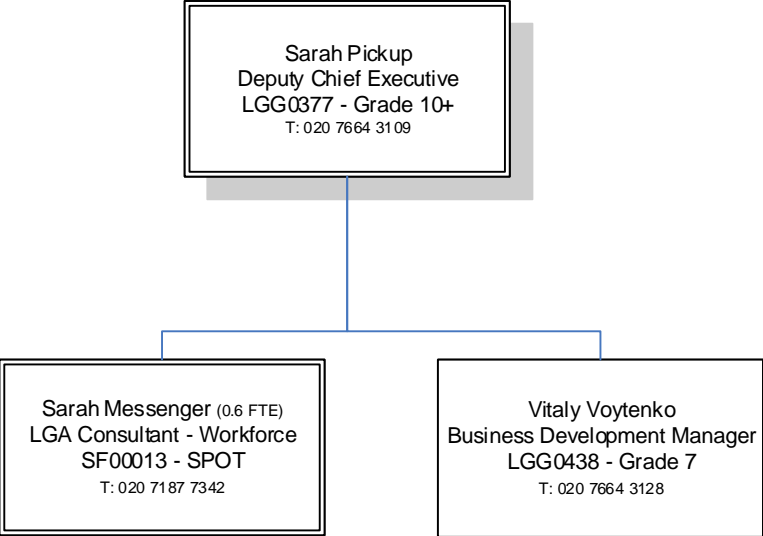
# Local Government Finance



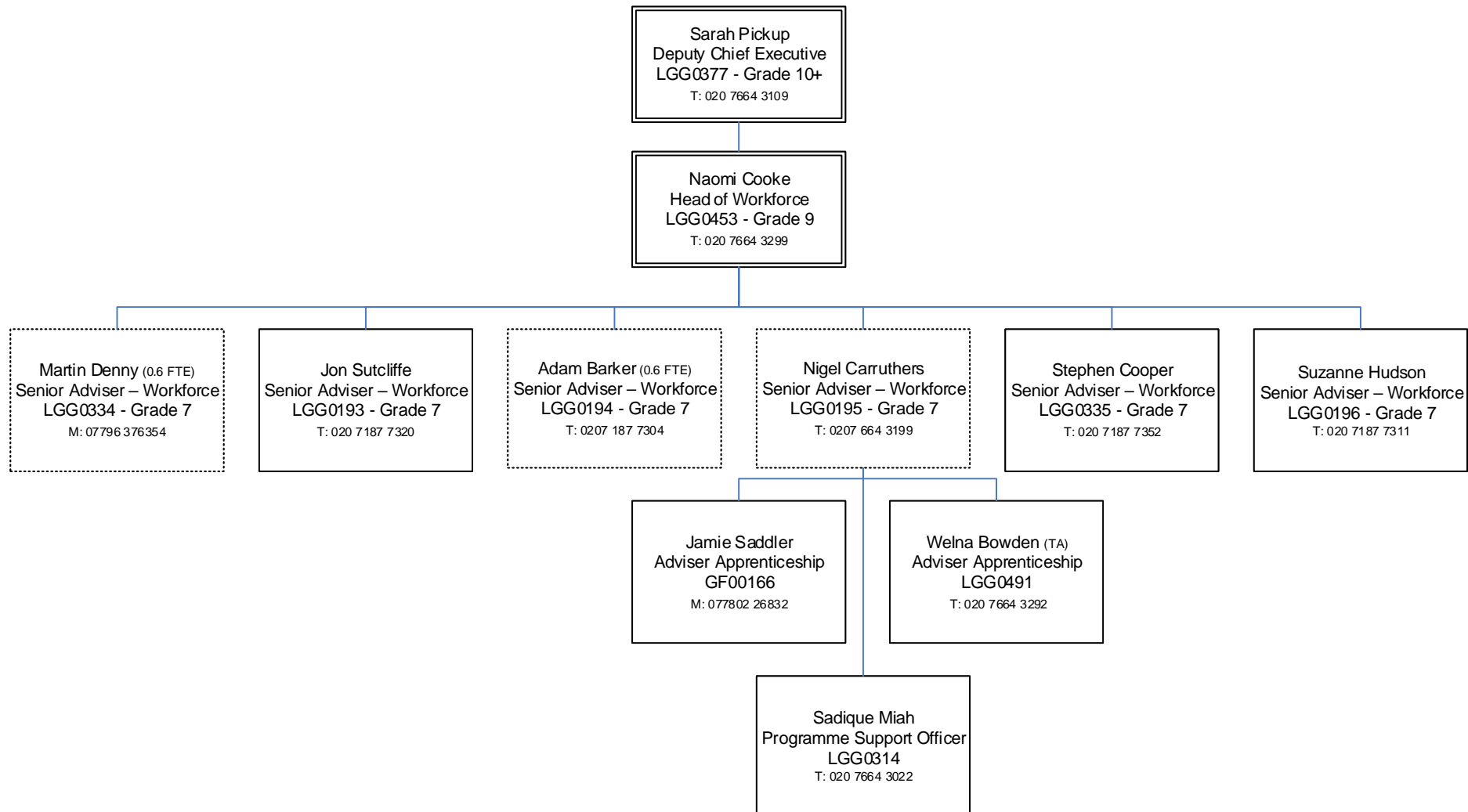
# Finance



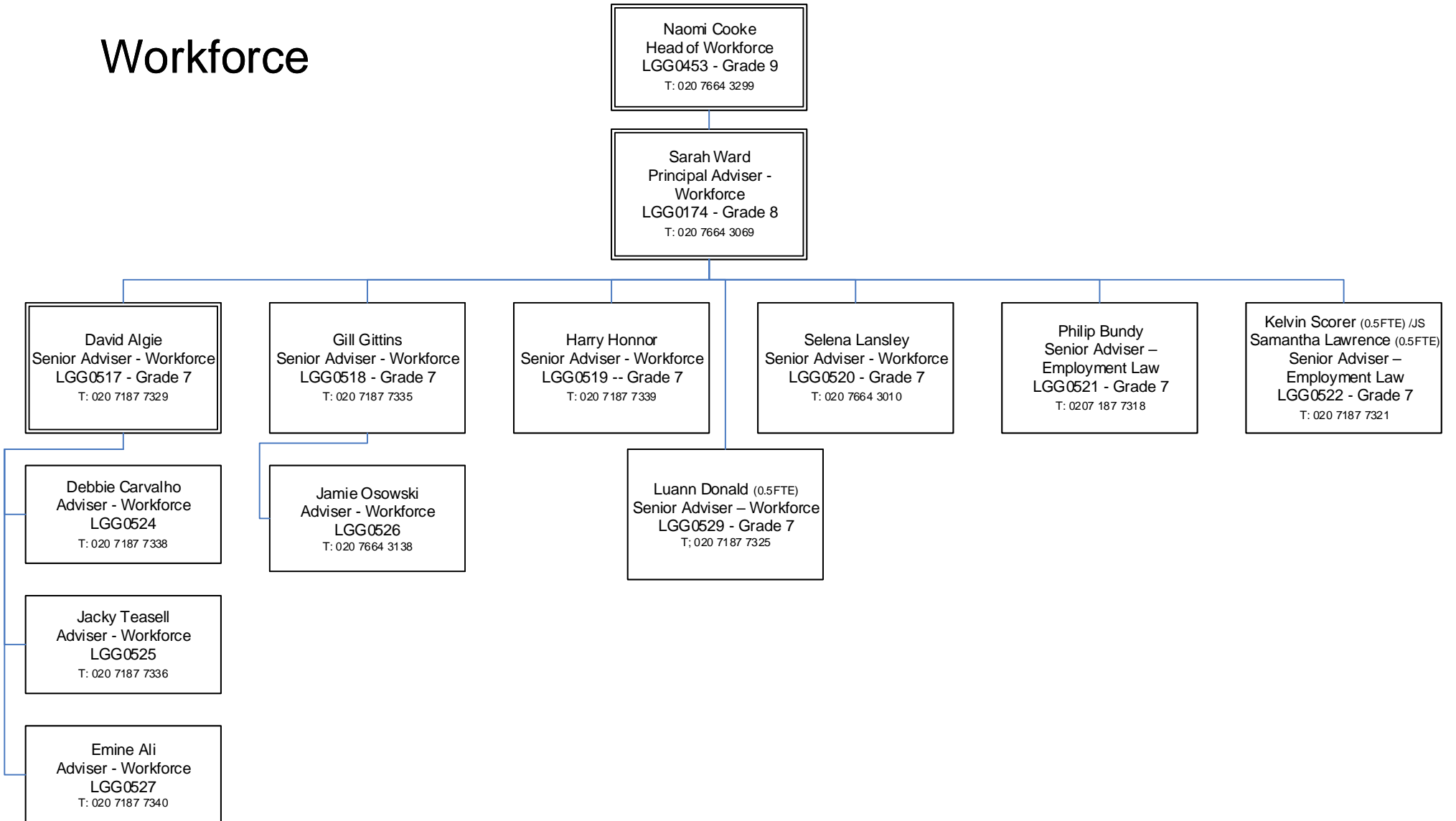
# Consultant / Commercial Team



# Workforce

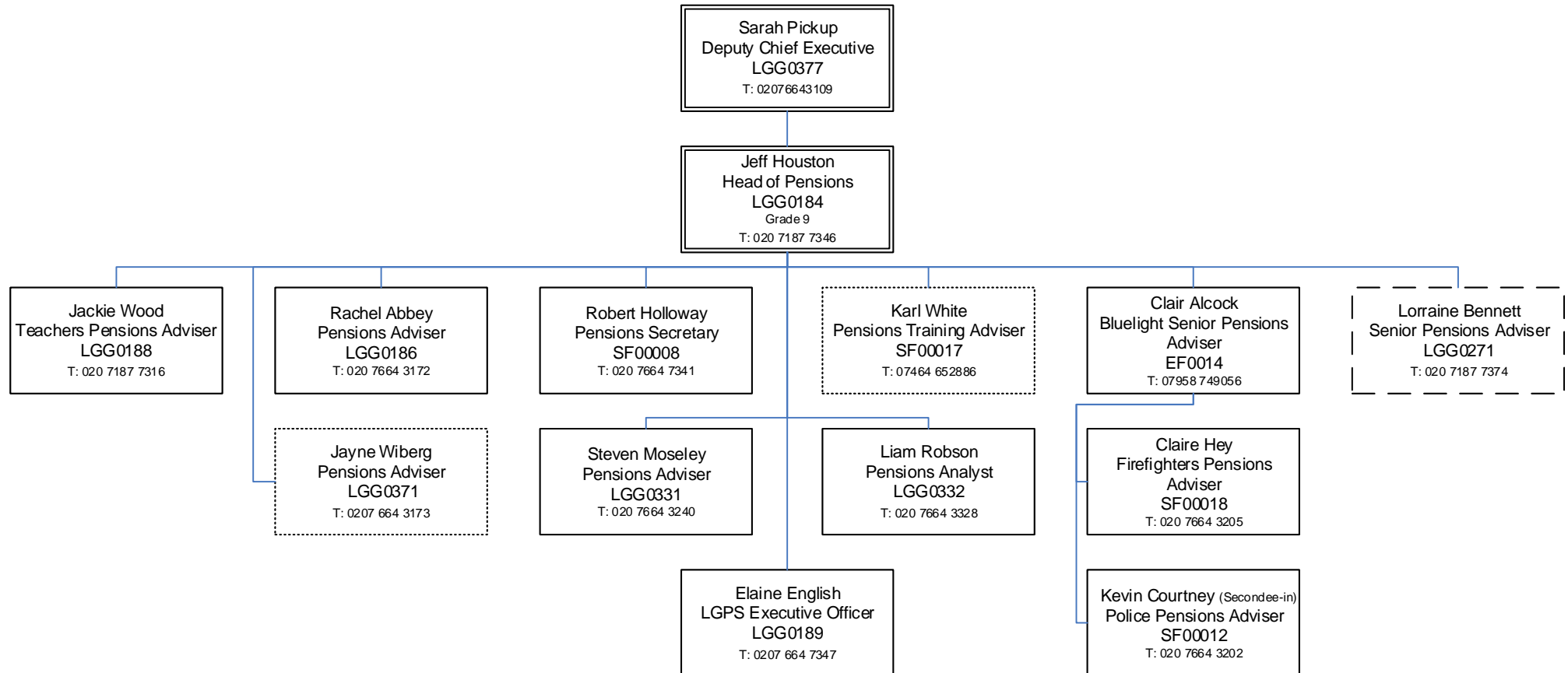


# Workforce



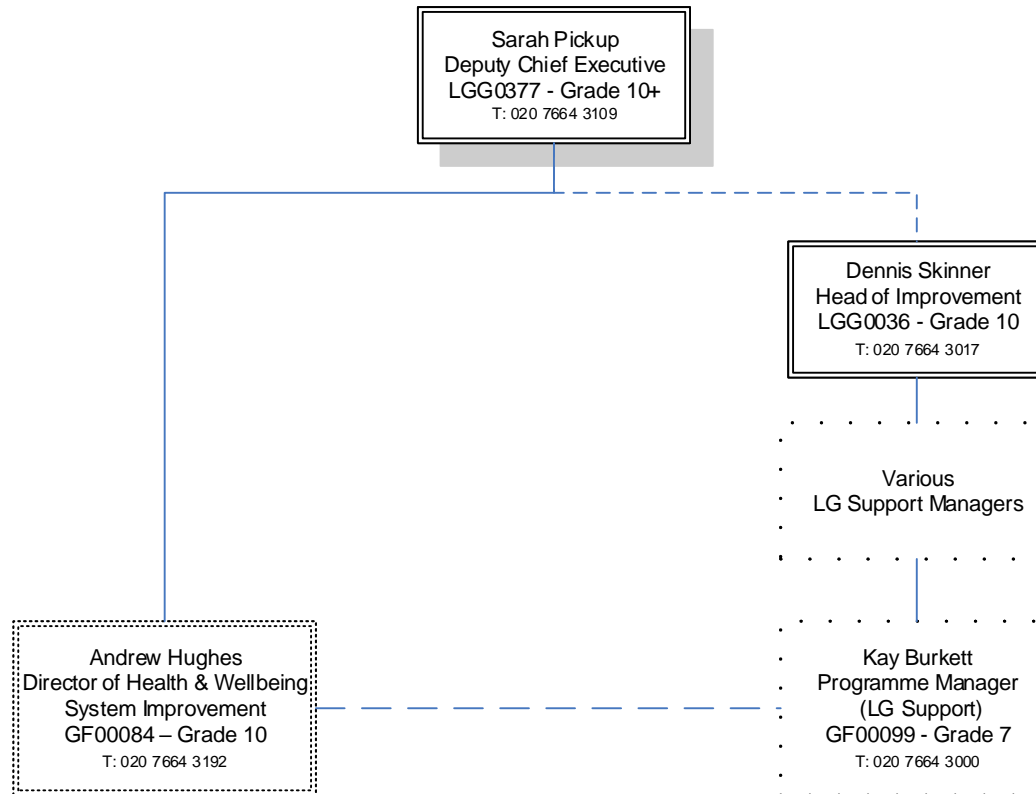


# Pensions



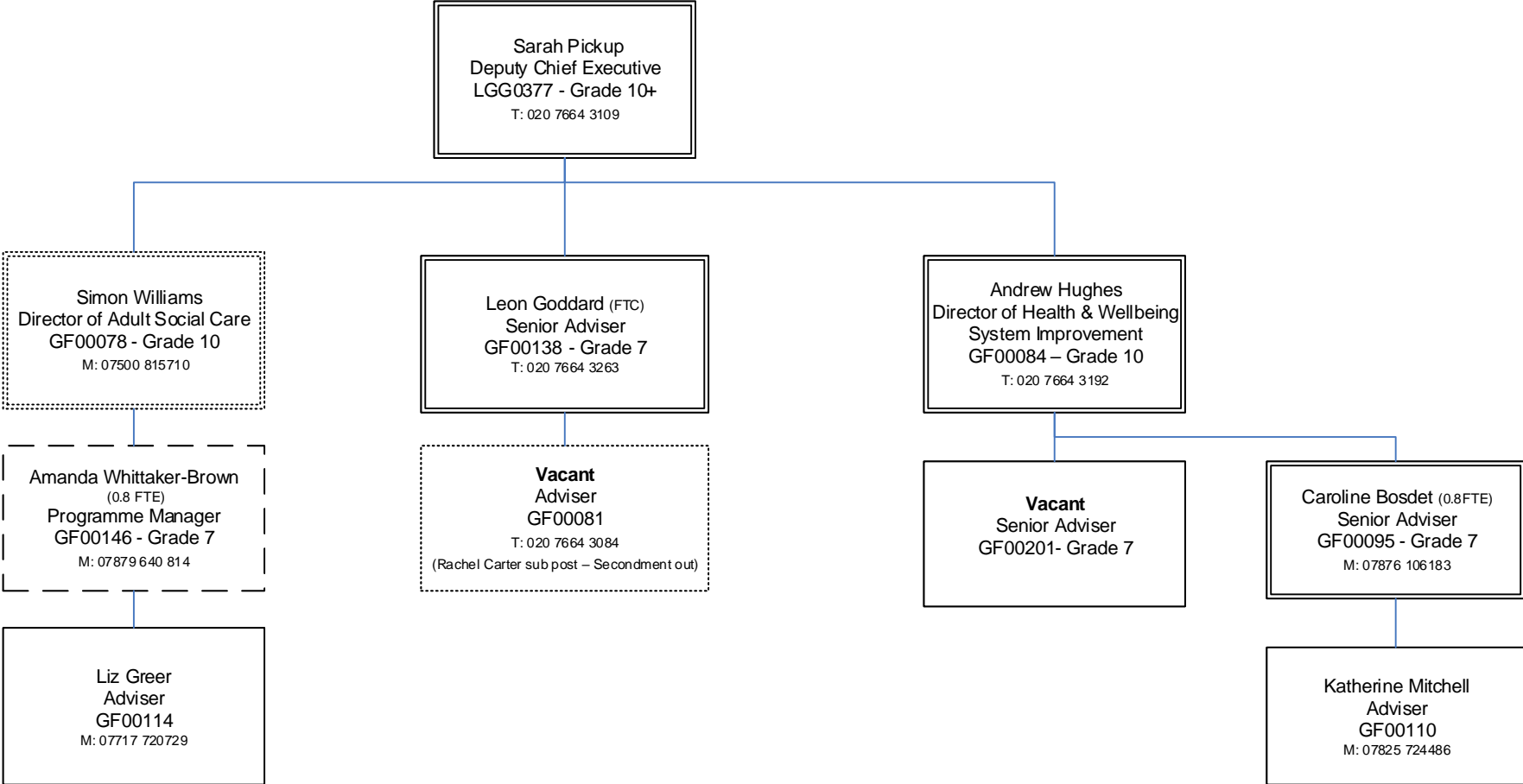
# Care and Health Programme

(Grant Funded)

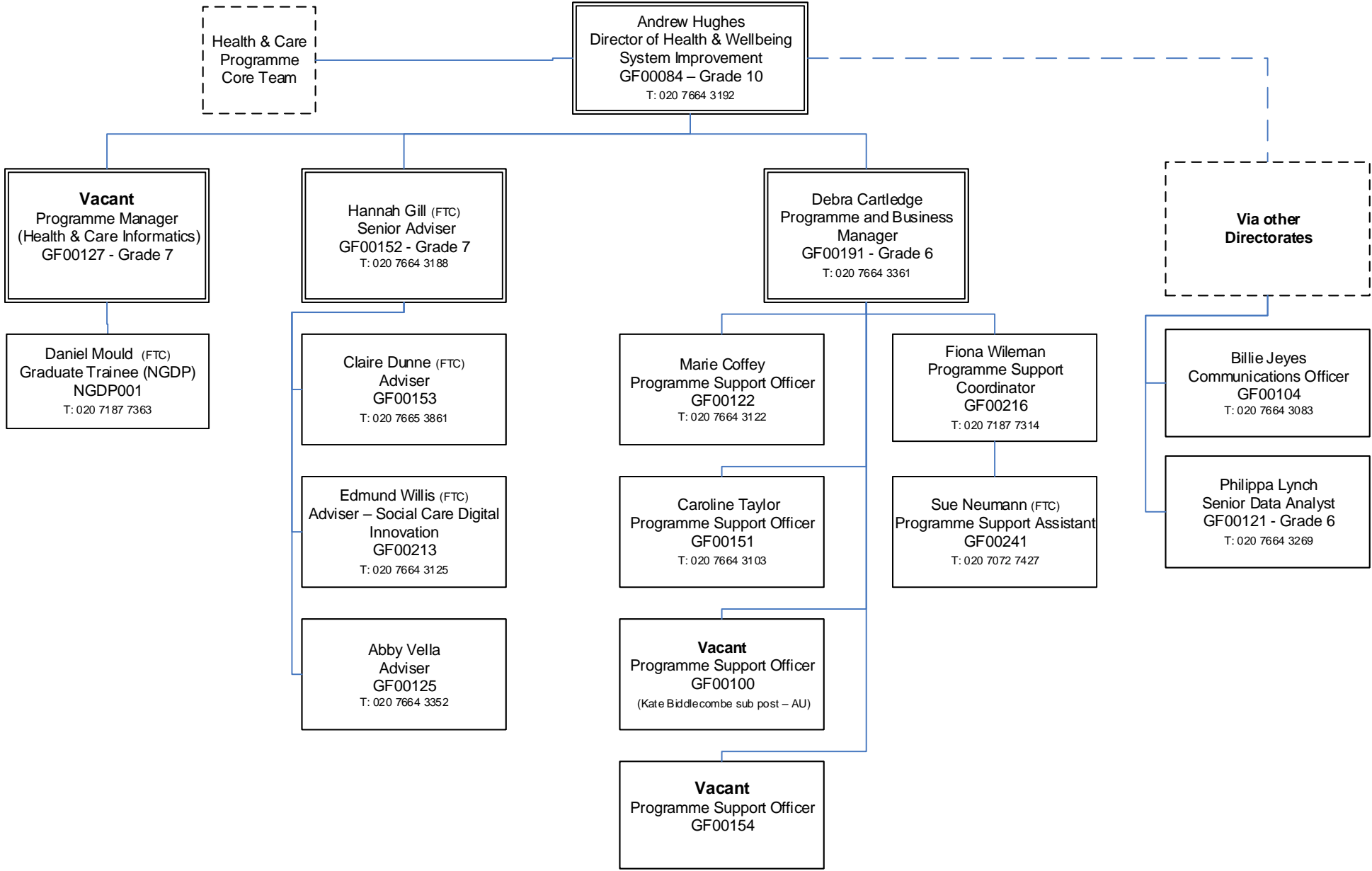


# Grant Funded Health Programmes

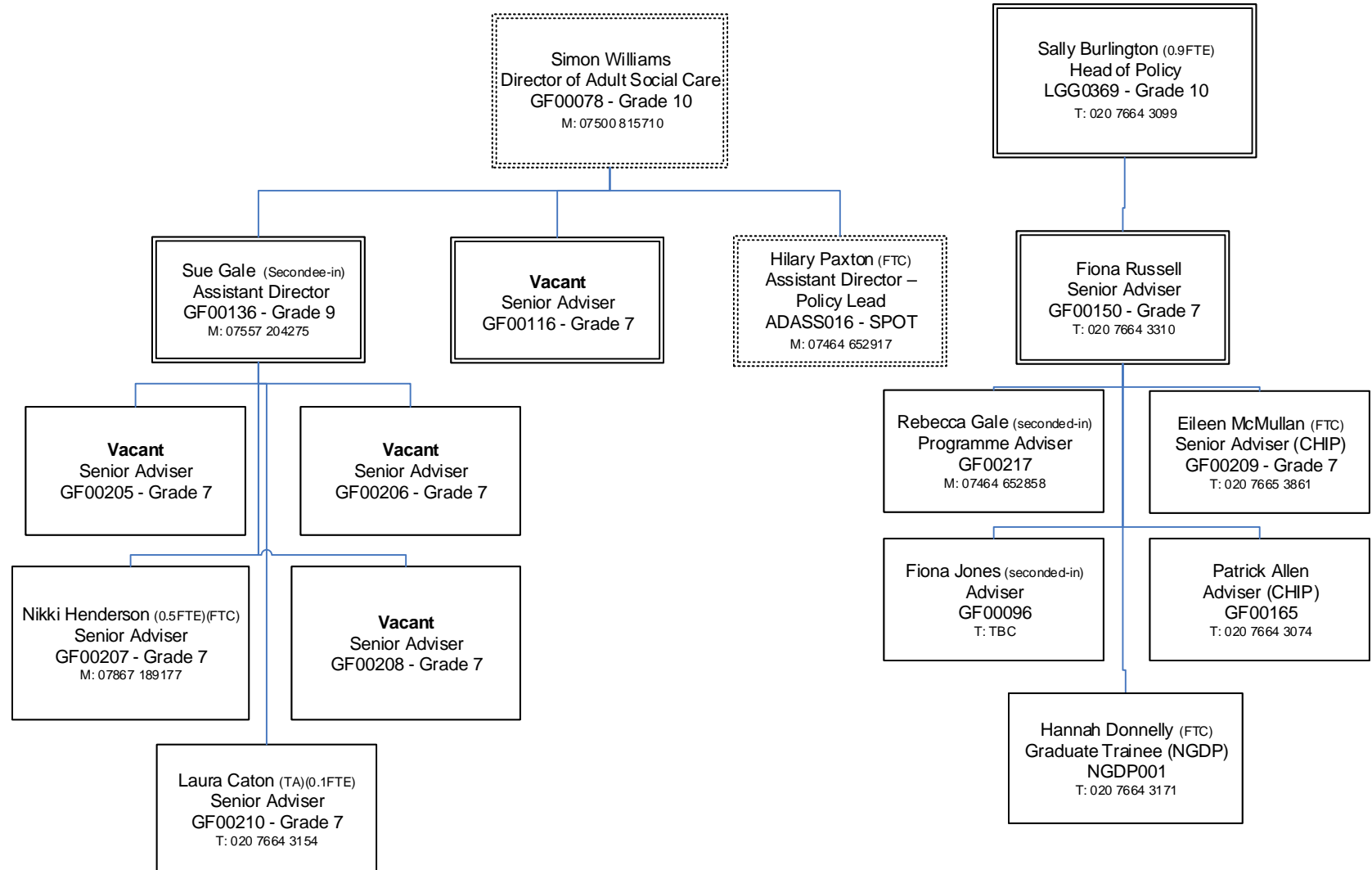
July 2020



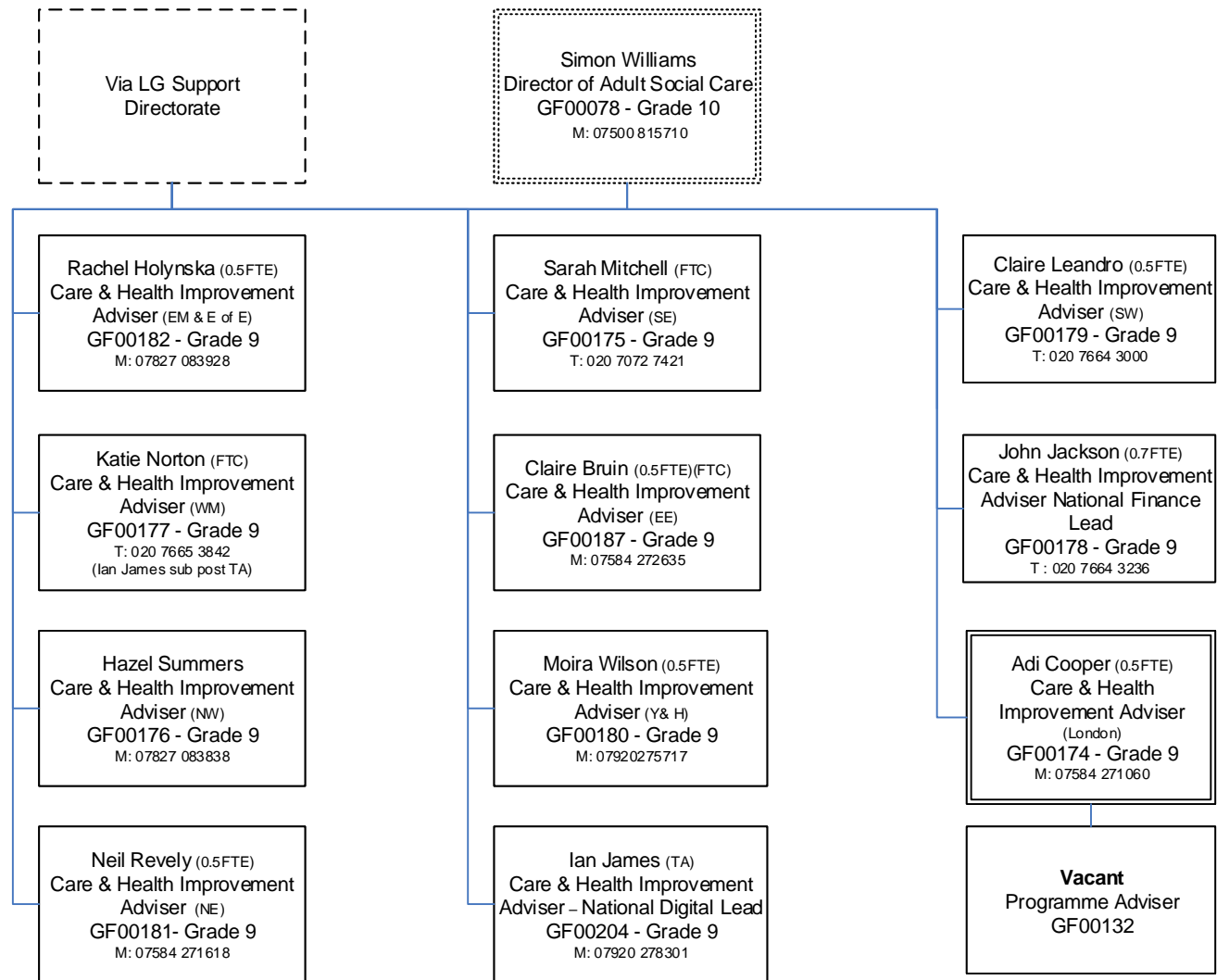
# Grant Funded Health Programmes



# Grant Funded Health Programmes

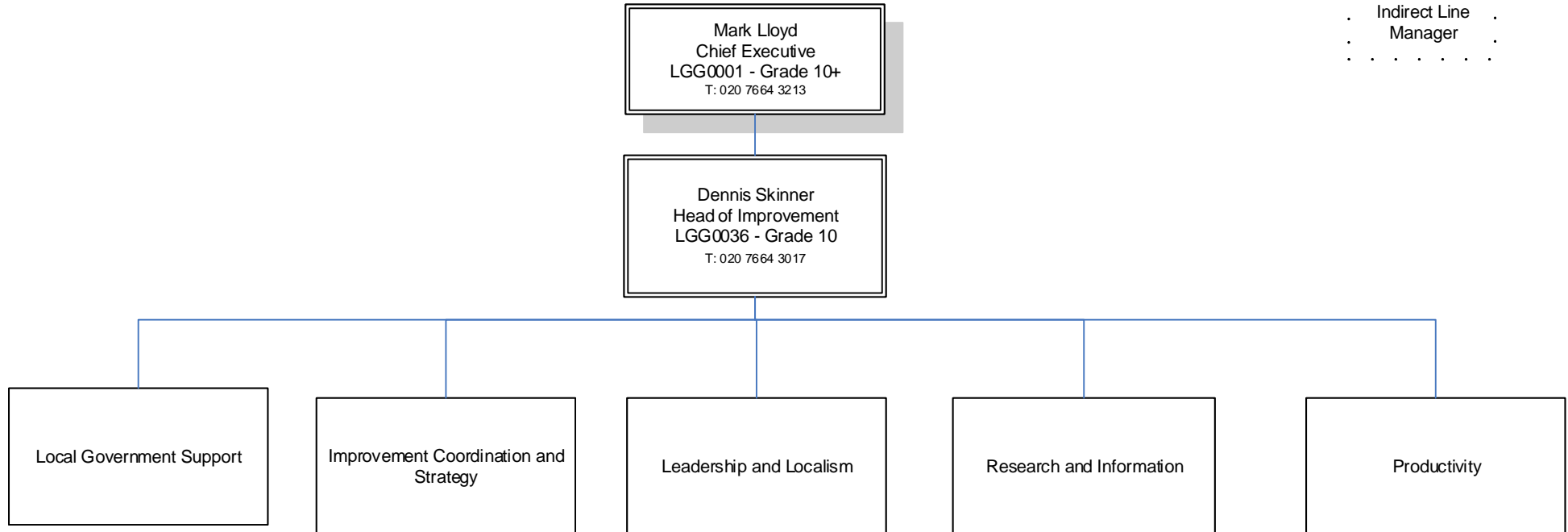
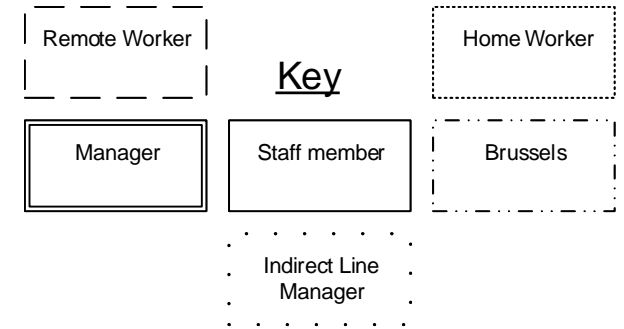


# Grant Funded Health Programmes

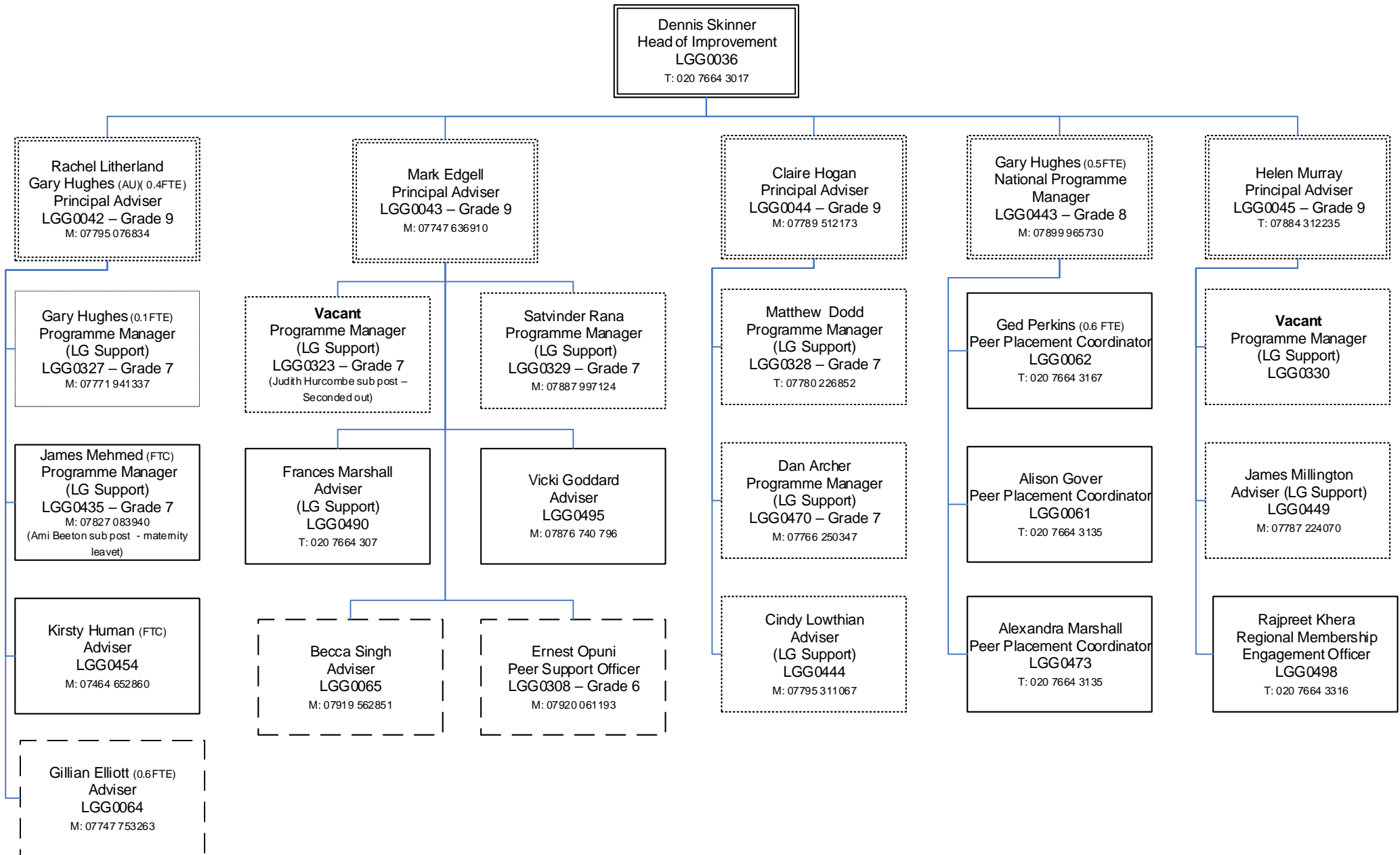


# Improvement Directorate

## July 2020

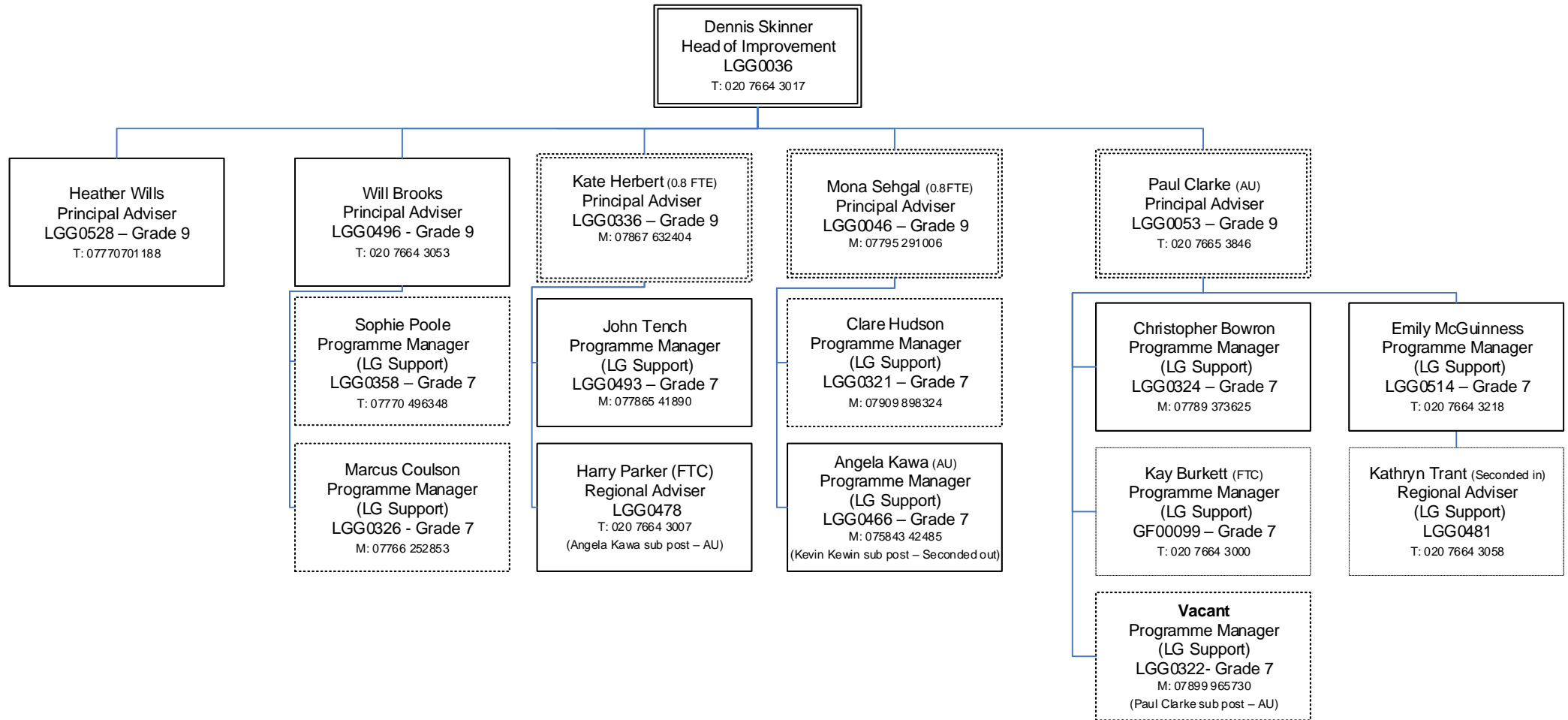


# Local Government Support (1)

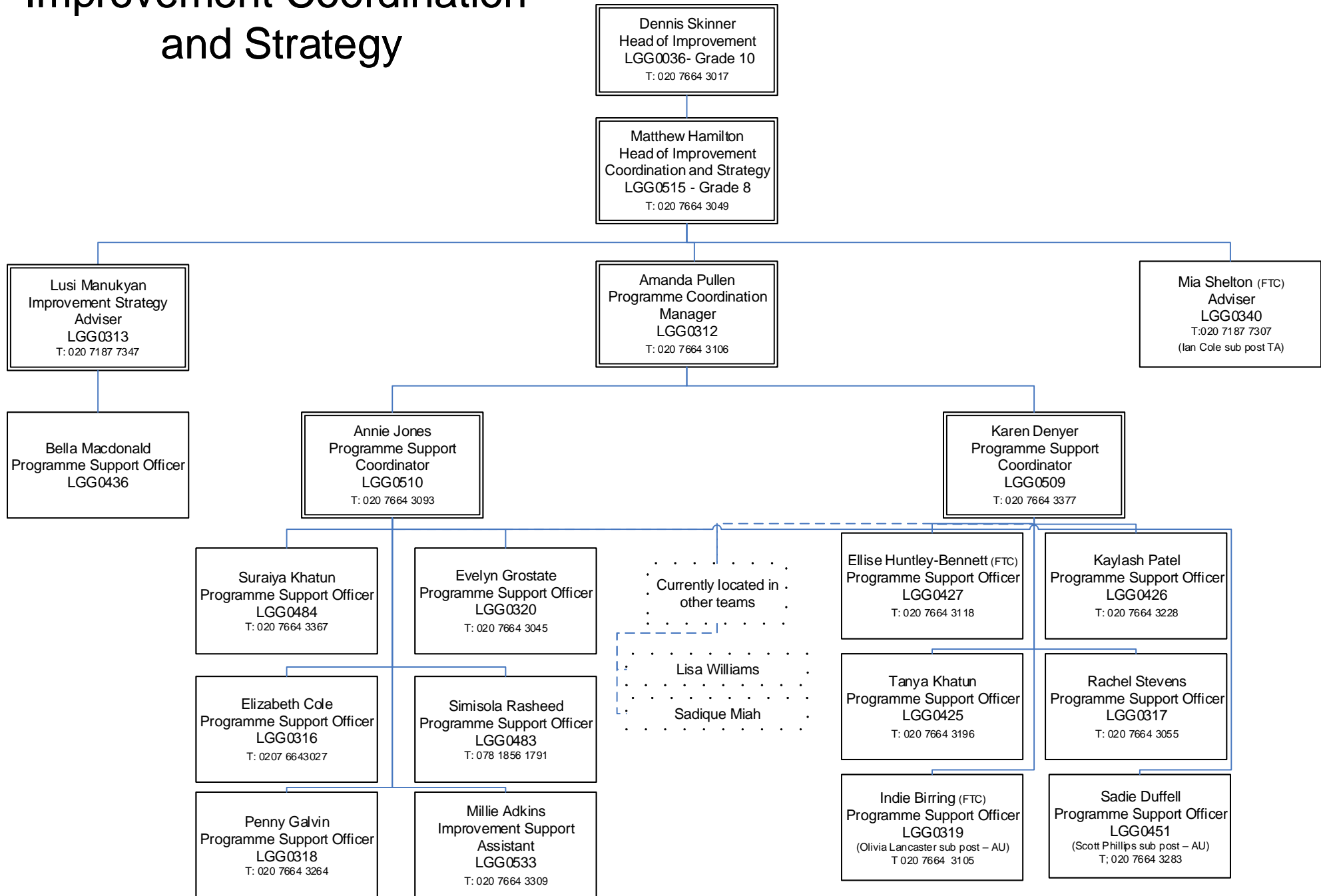




# Local Government Support (2)

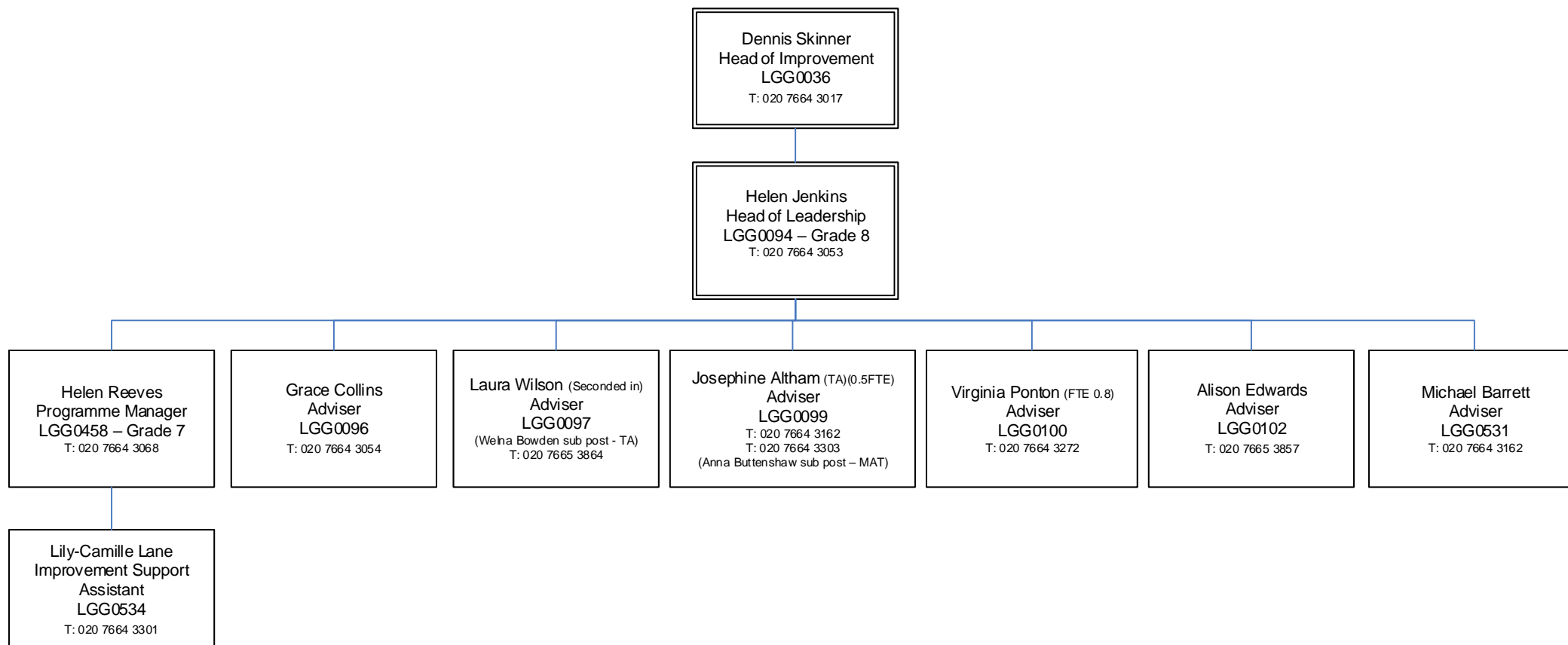


# Improvement Coordination and Strategy

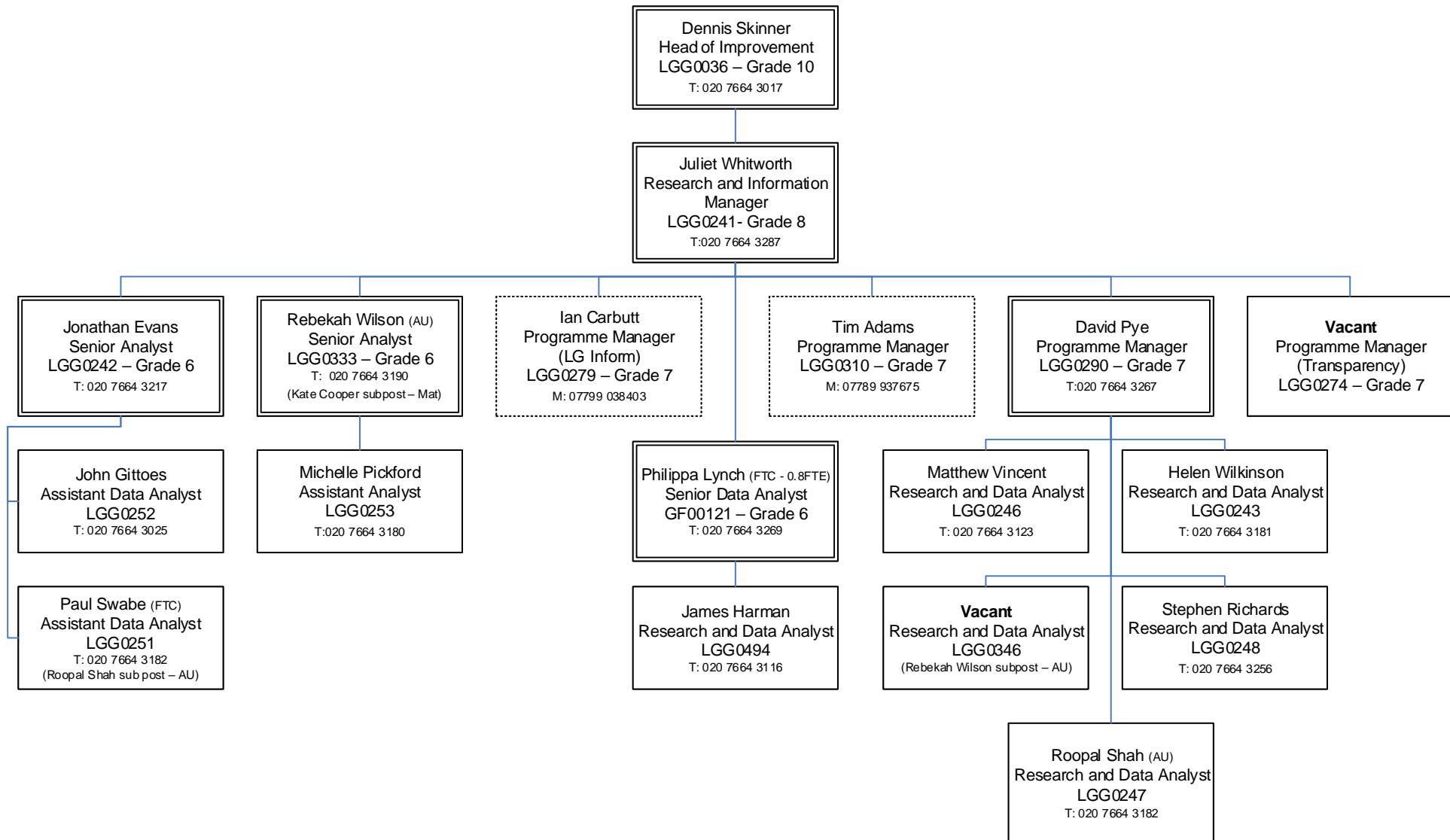


To contact an LGA colleague via email, their email address will be Firstname.Sumame@local.gov.uk

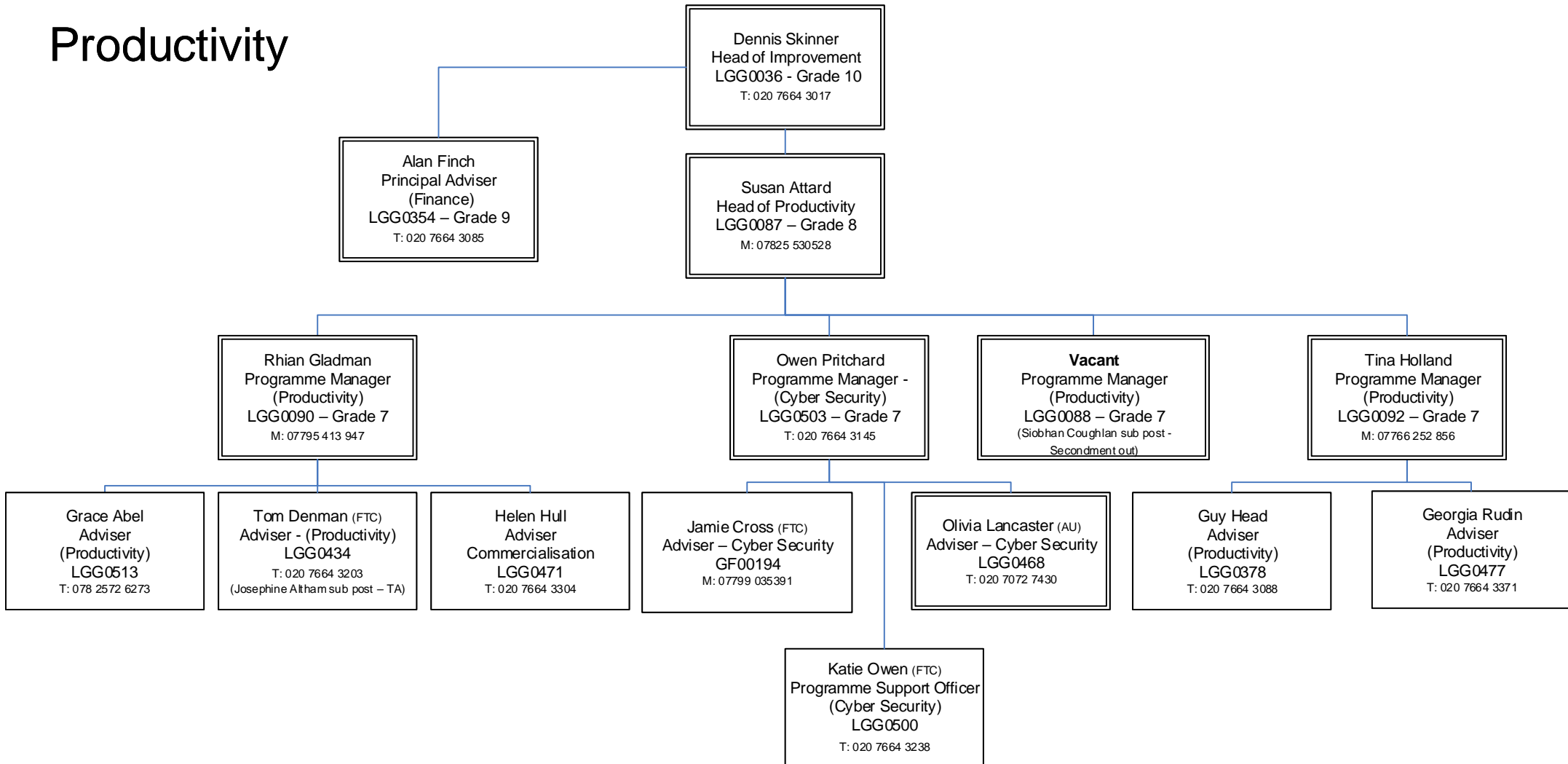
# Leadership and Localism

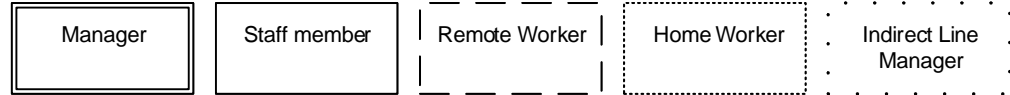


# Research and Information



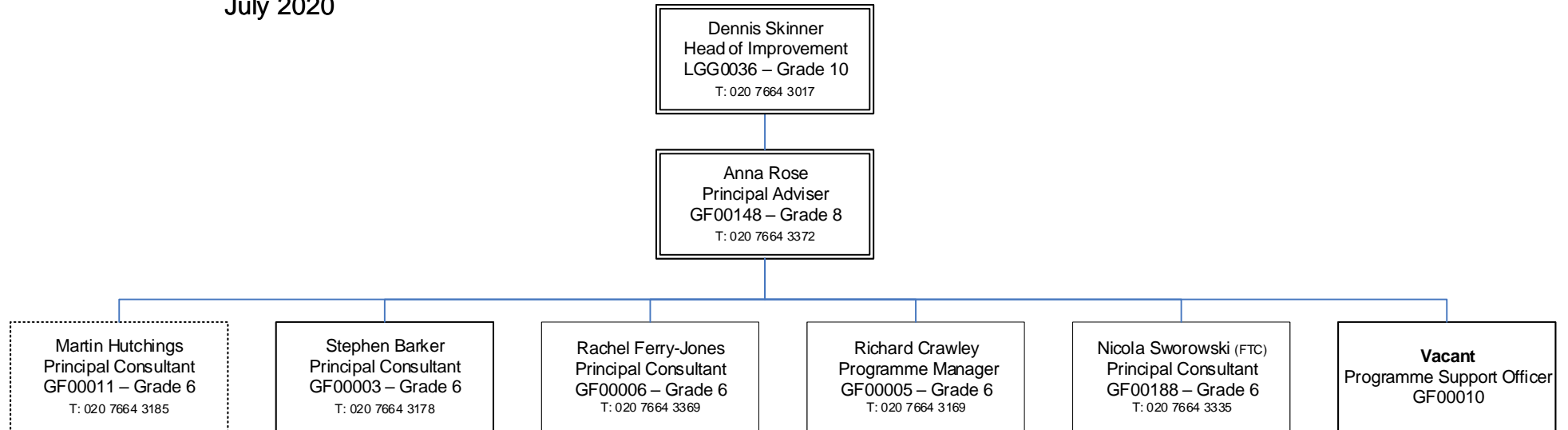
# Productivity



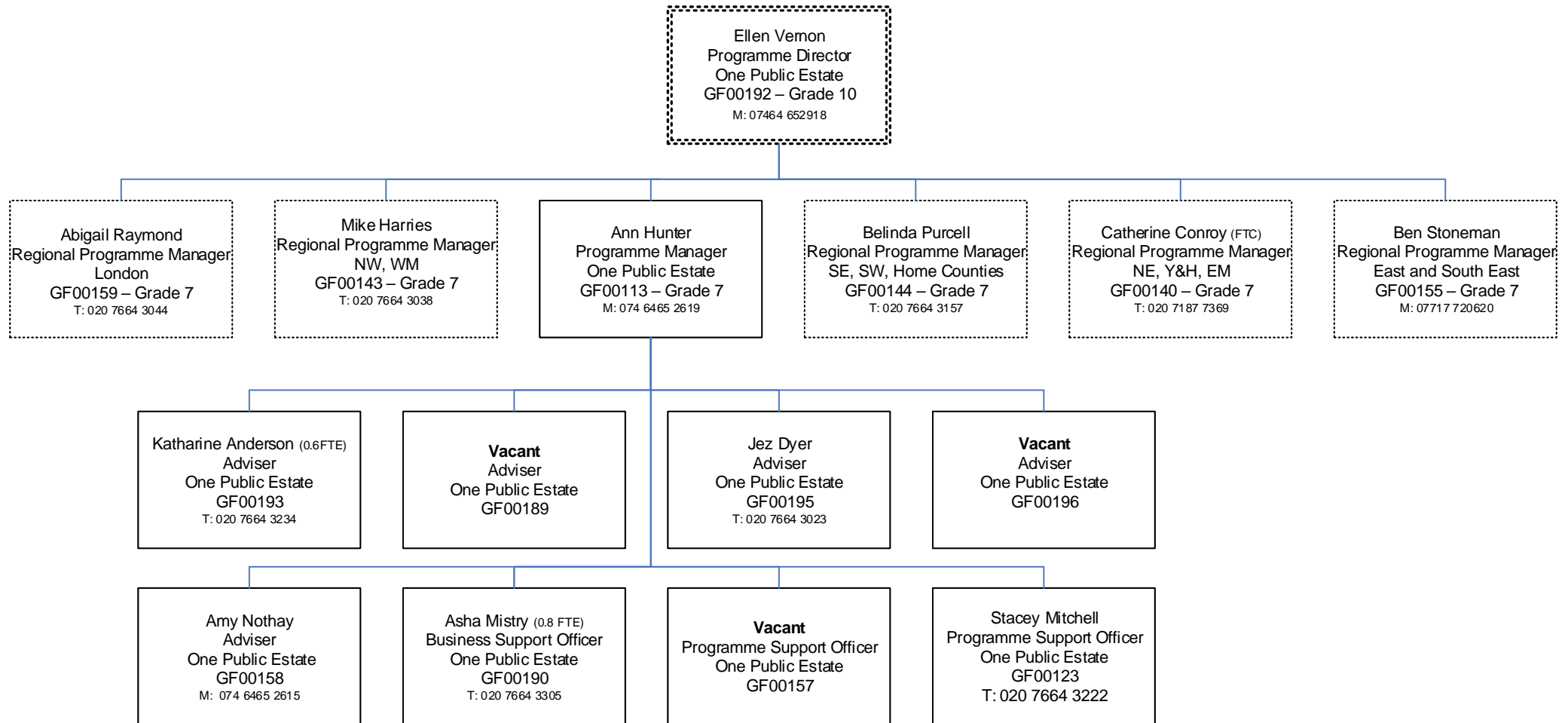


# Planning Advisory Service (PAS)

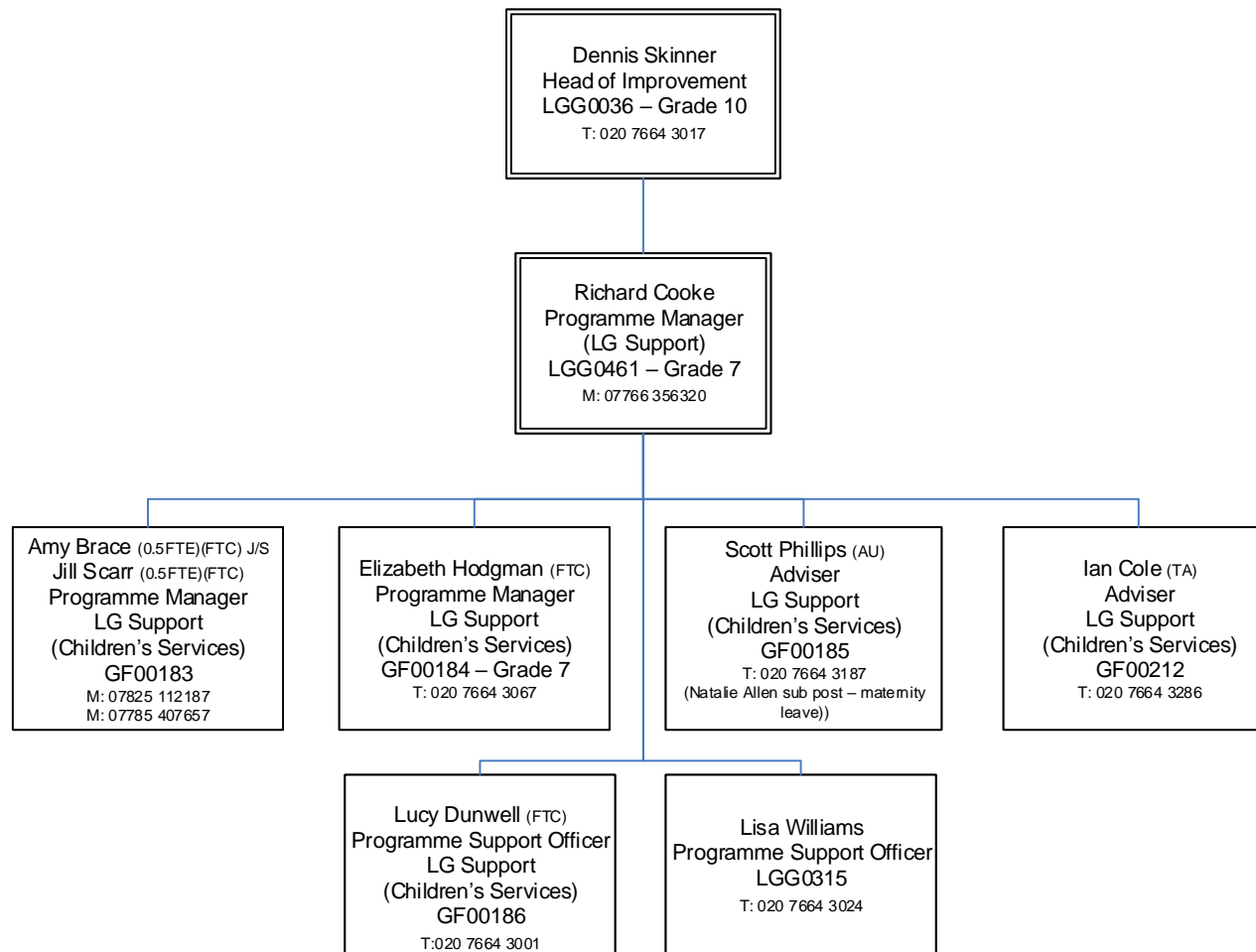
July 2020



# One Public Estate Programme - LGA Team



# Children's Improvement Programme

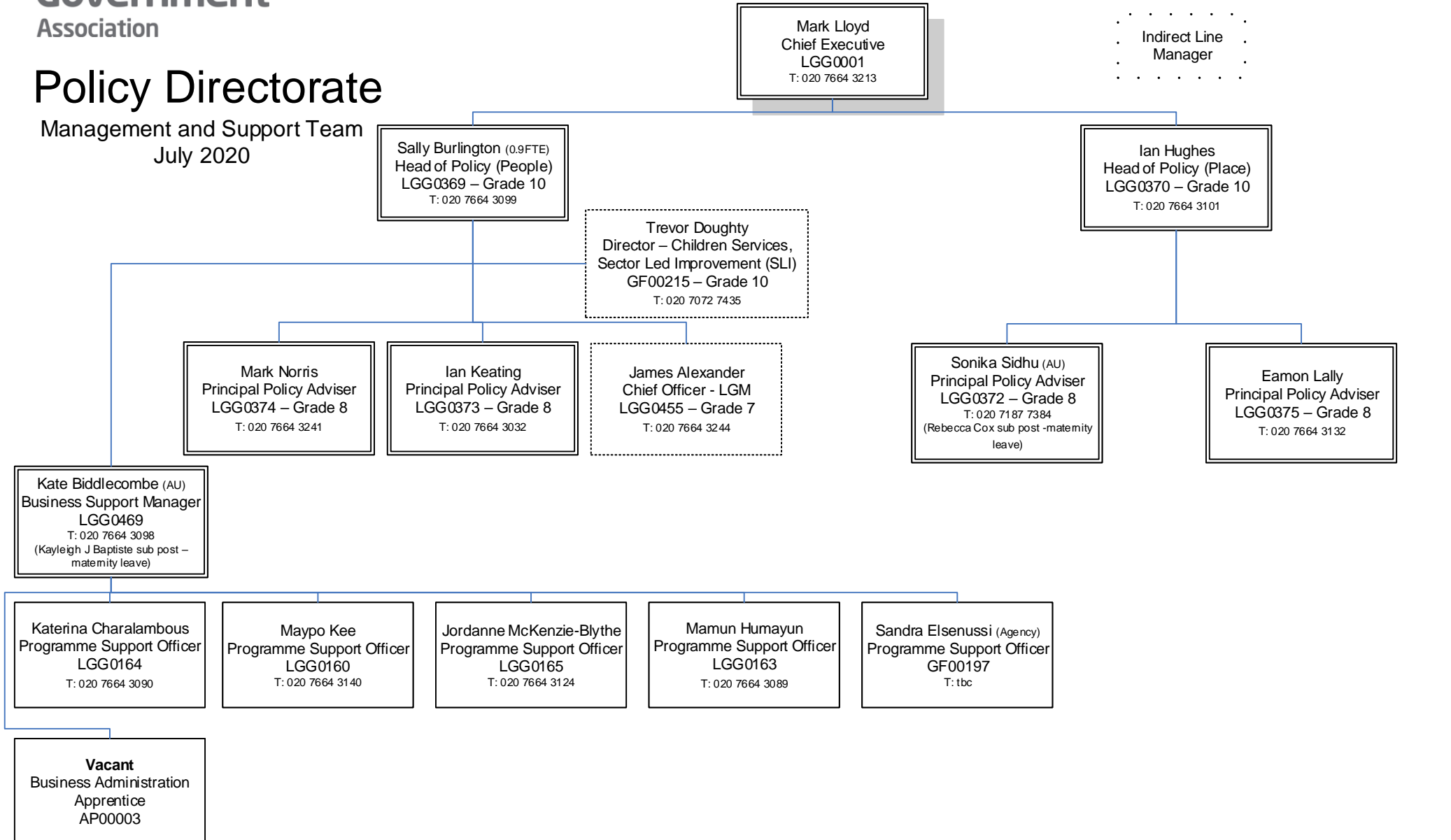
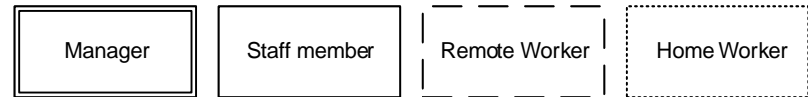




# Policy Directorate

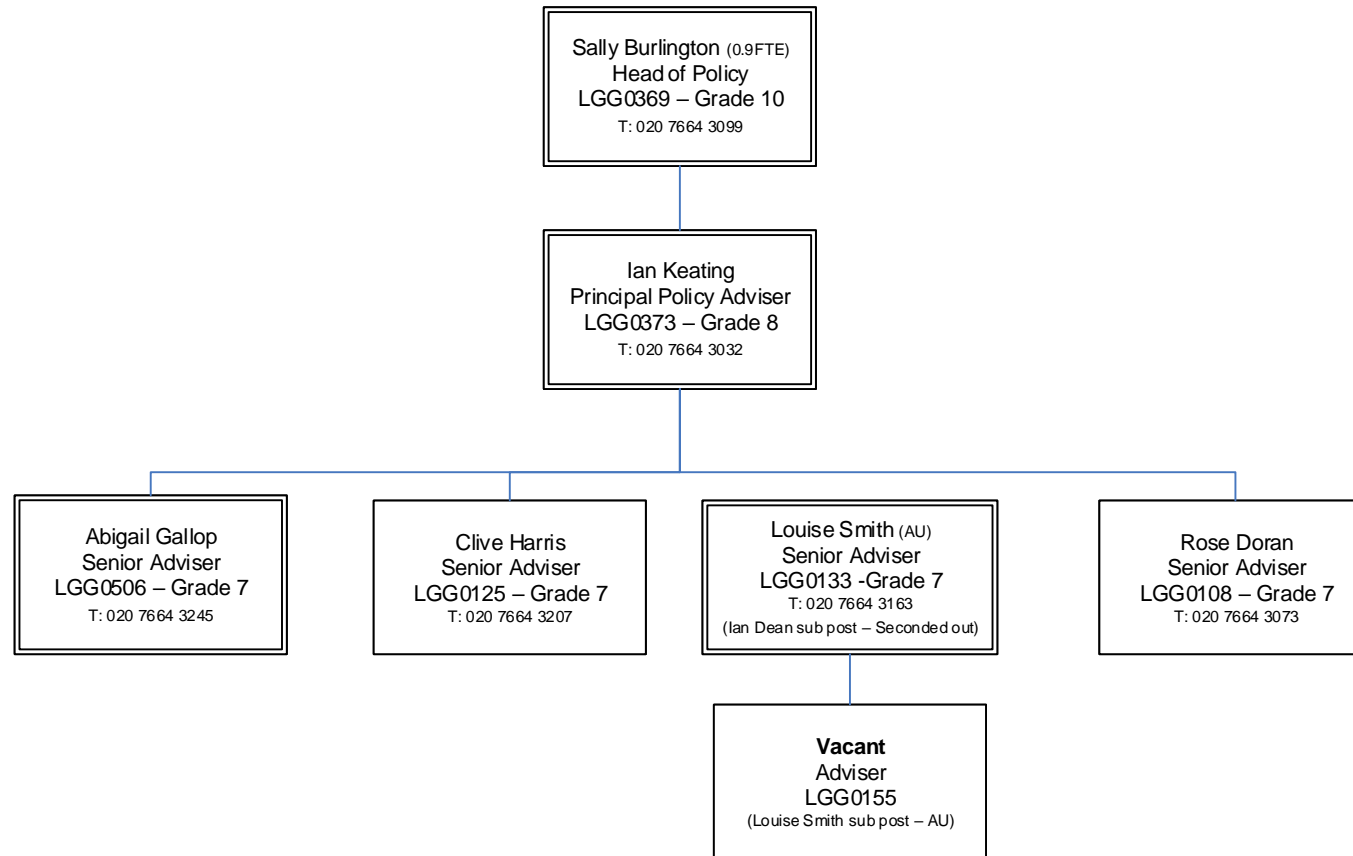
Management and Support Team  
July 2020

## Key



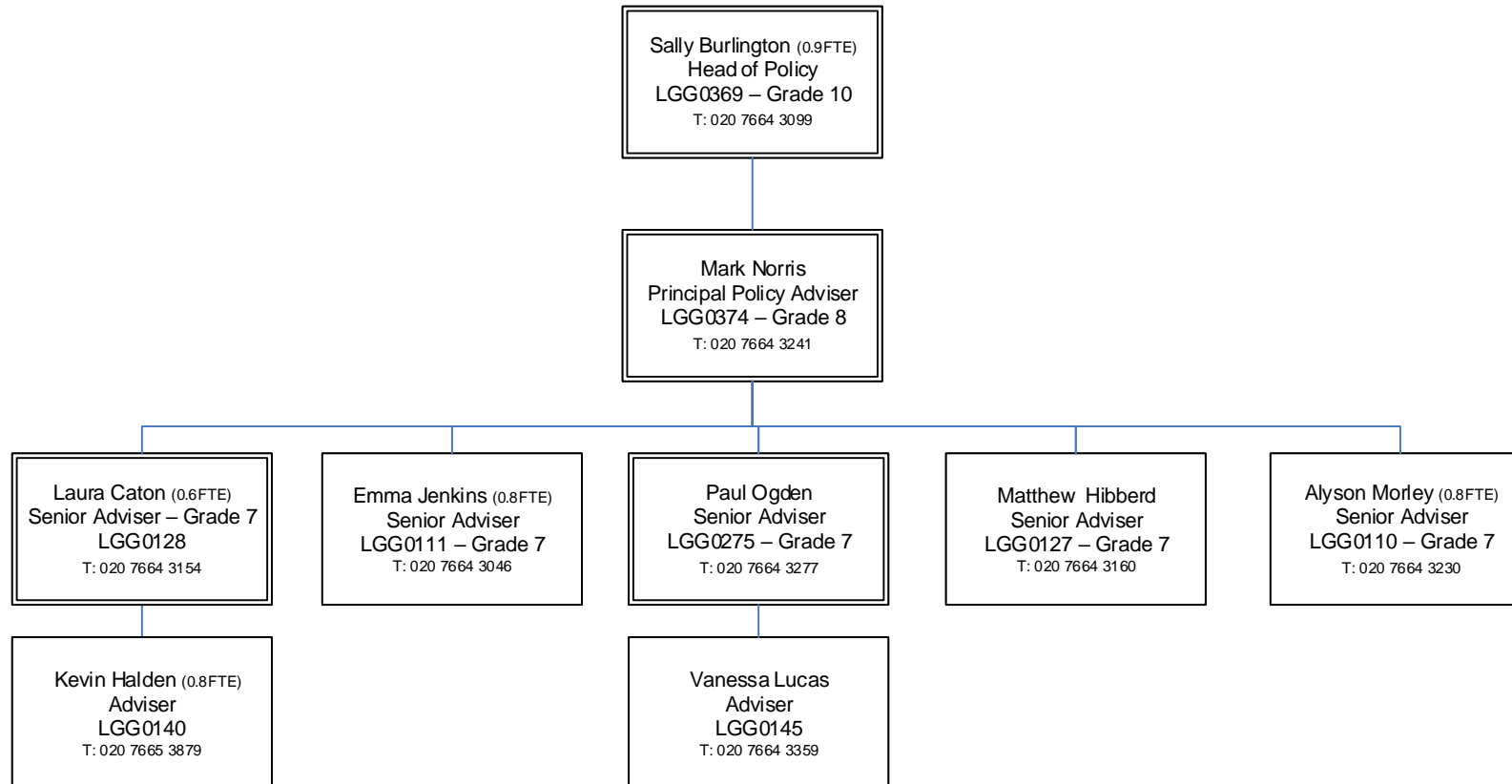
# Policy Directorate

Children & Young People



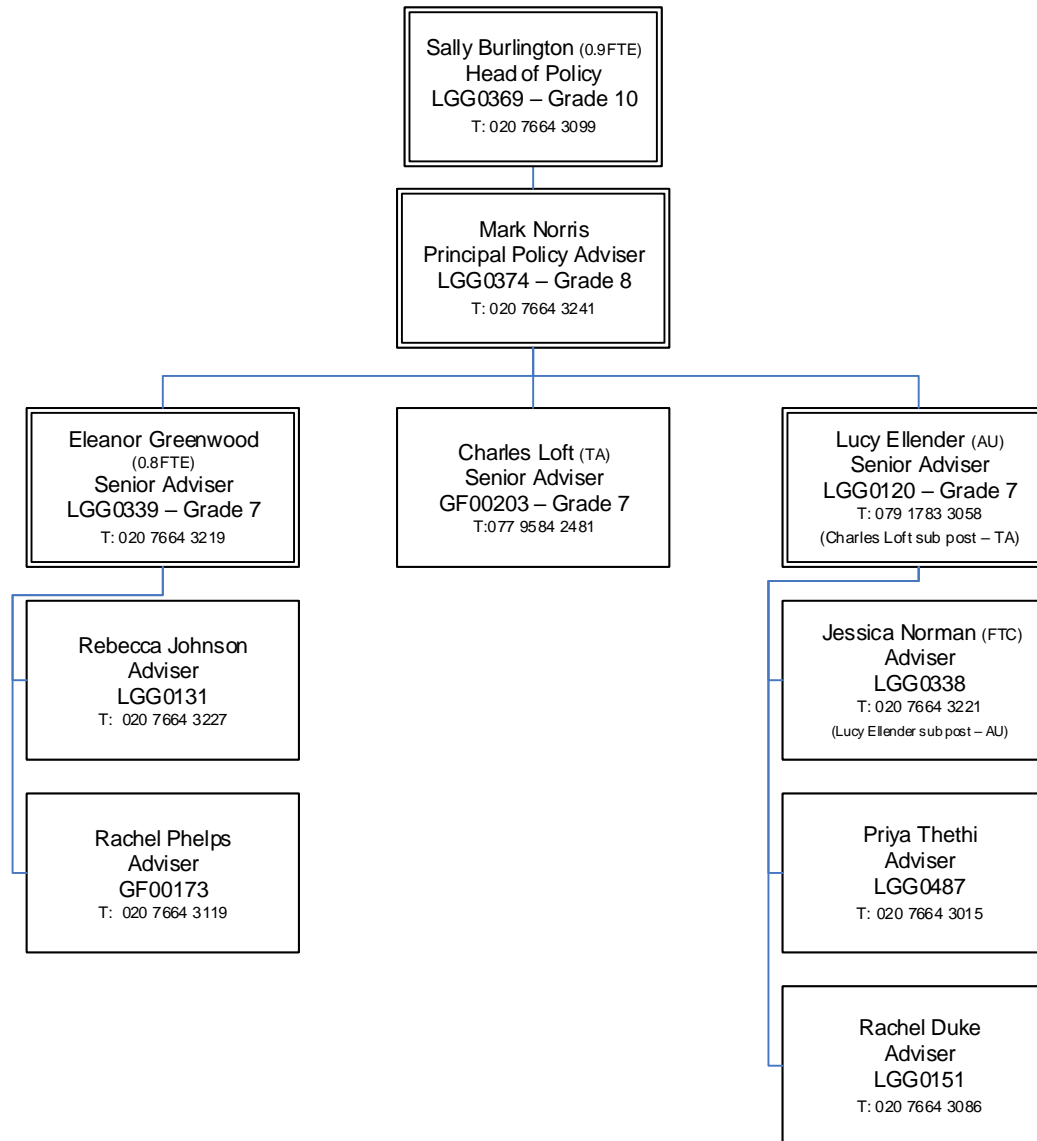
# Policy Directorate

Adult Social Care & Health



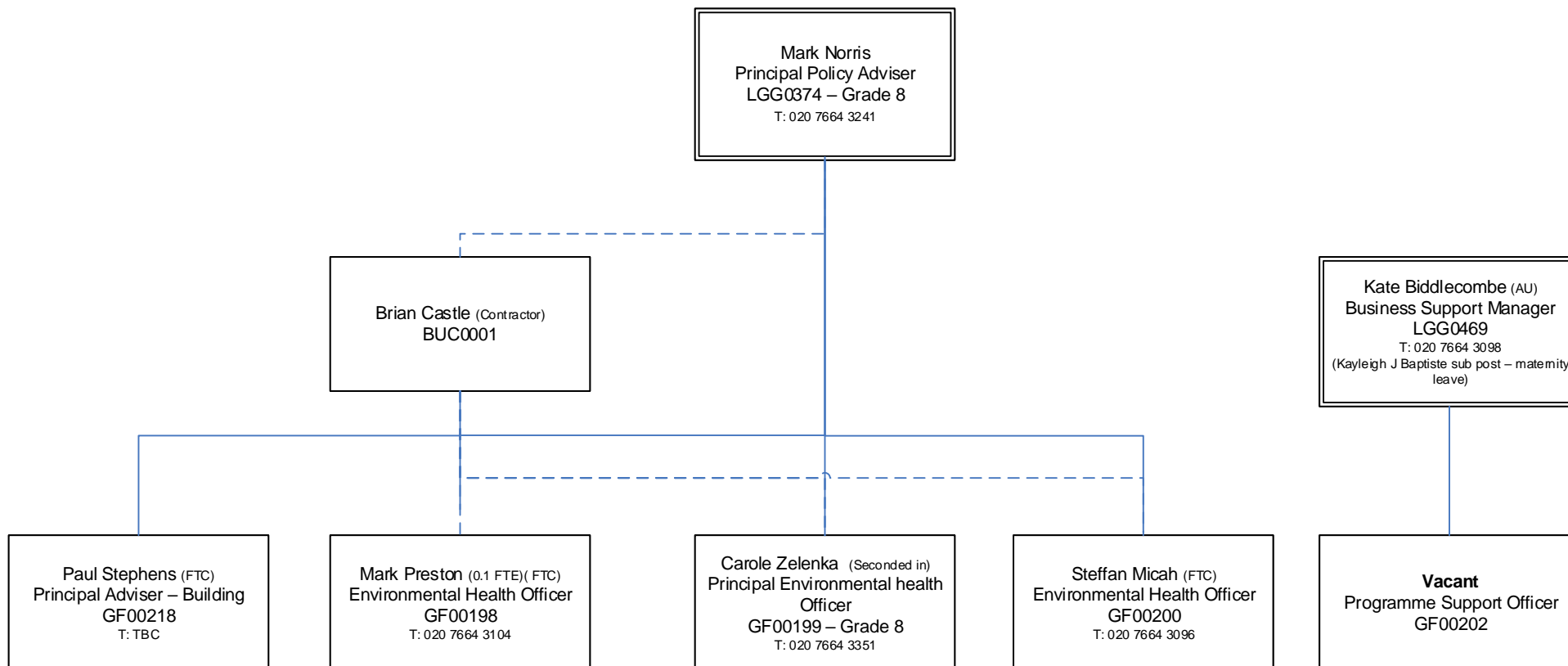
# Policy Directorate

Resilience, Safety & Regulation



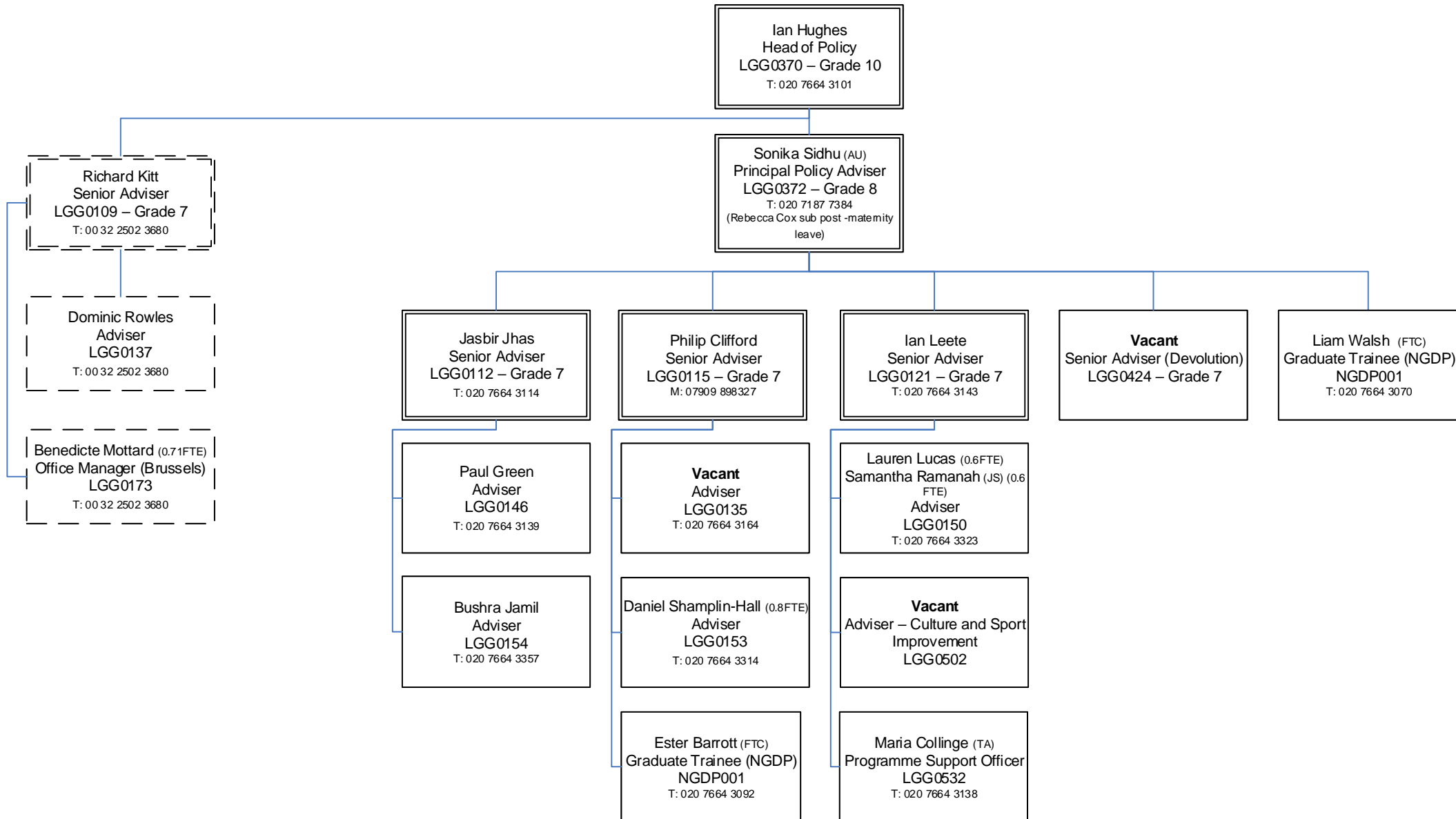
# Joint Inspection Team

(Grant Funded)



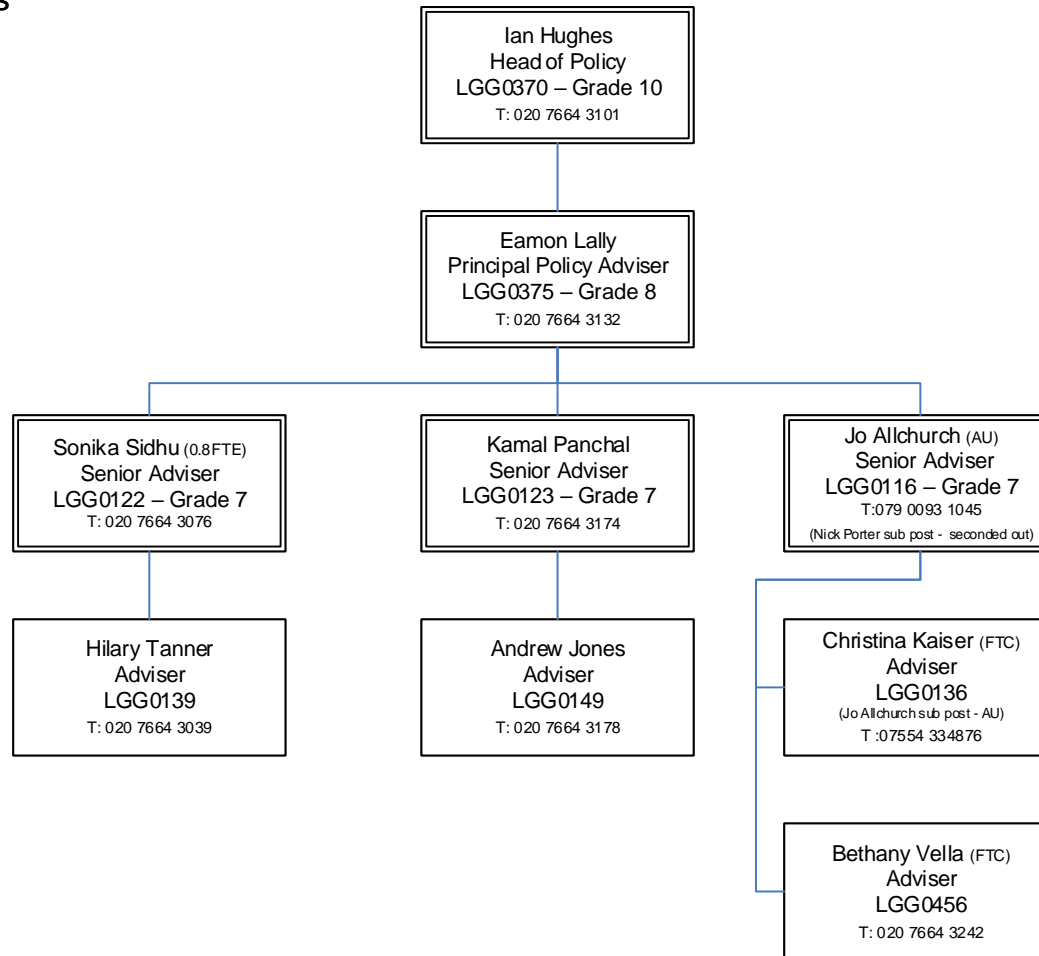
# Policy Directorate

CTS, People and Places, Cities, International and Digital



# Policy Directorate

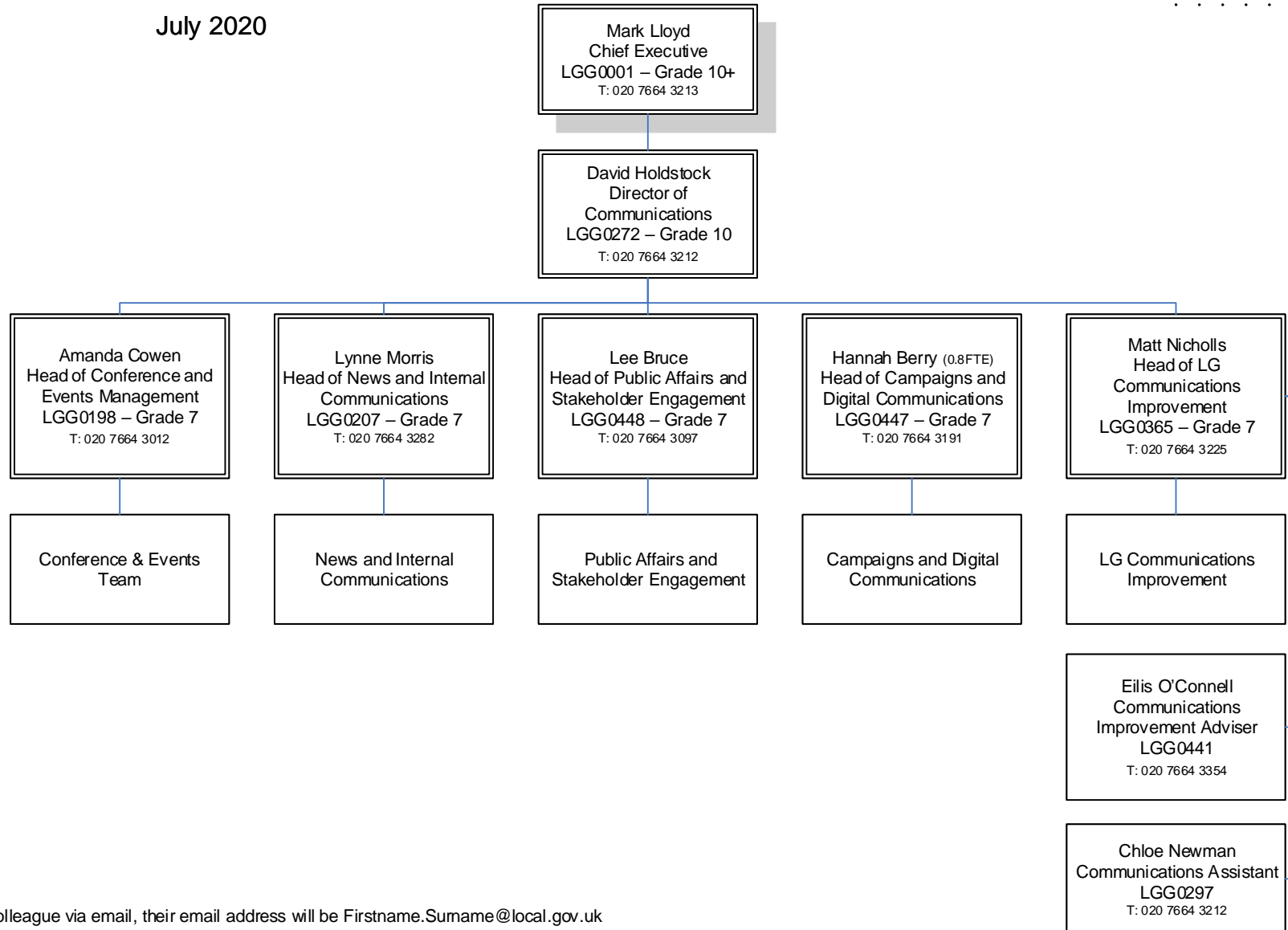
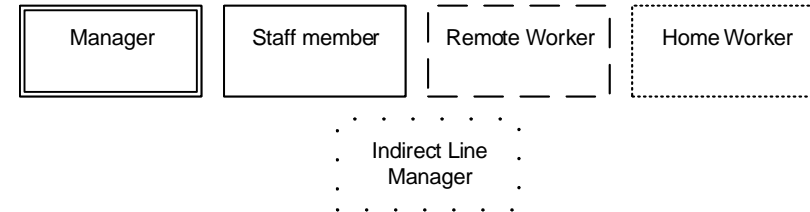
EEHT, Skills and Resources



# Communications Directorate

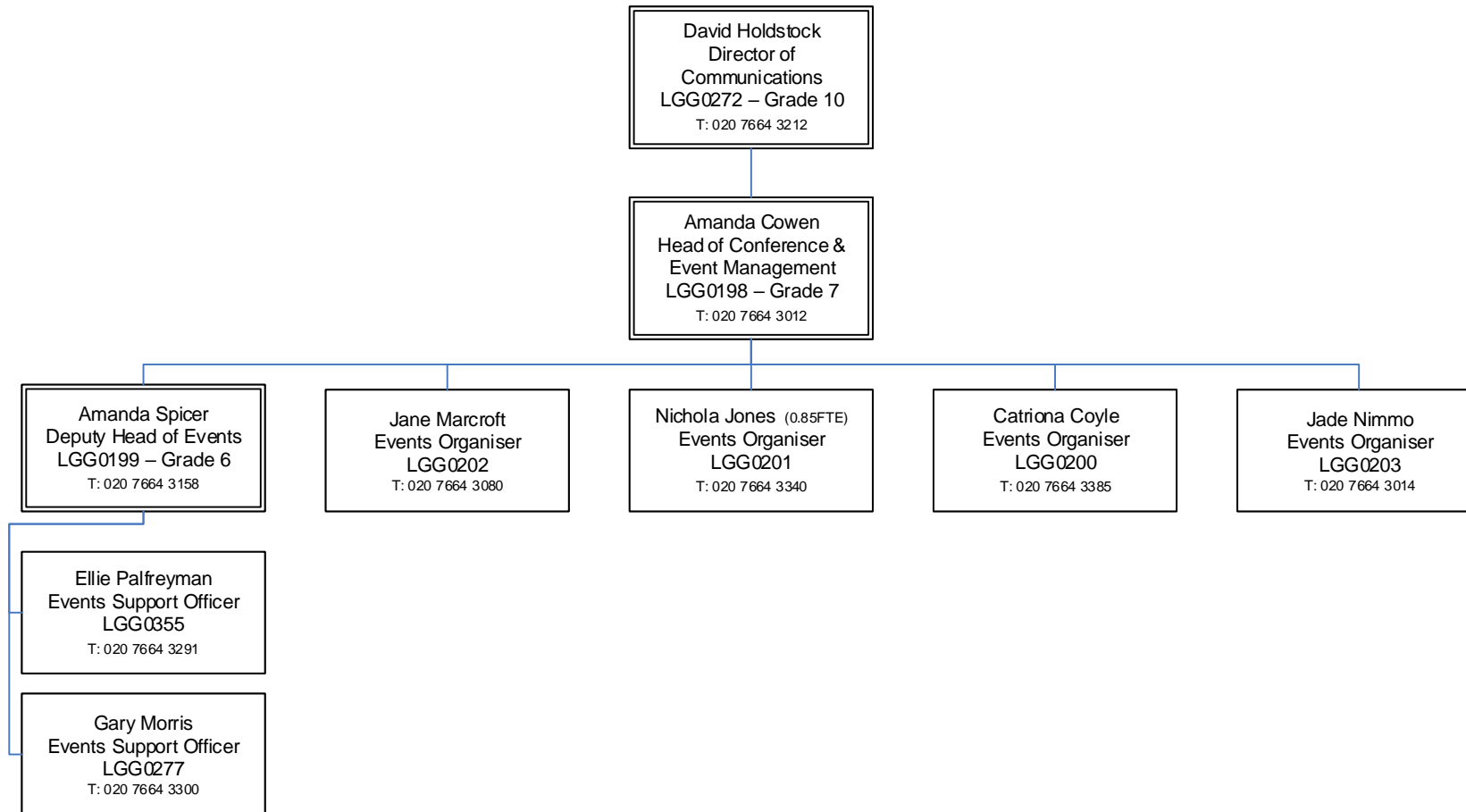
July 2020

## Key

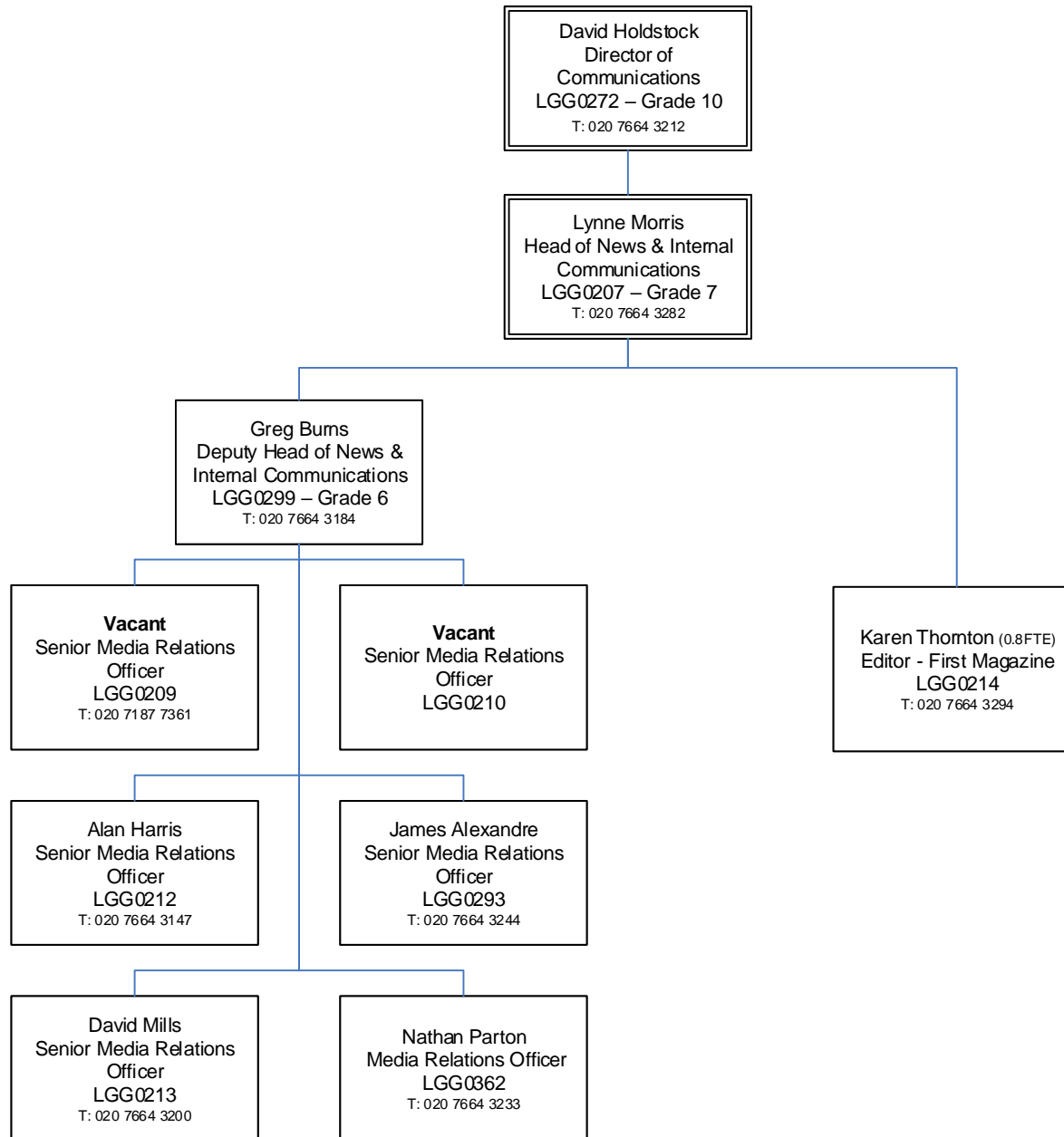




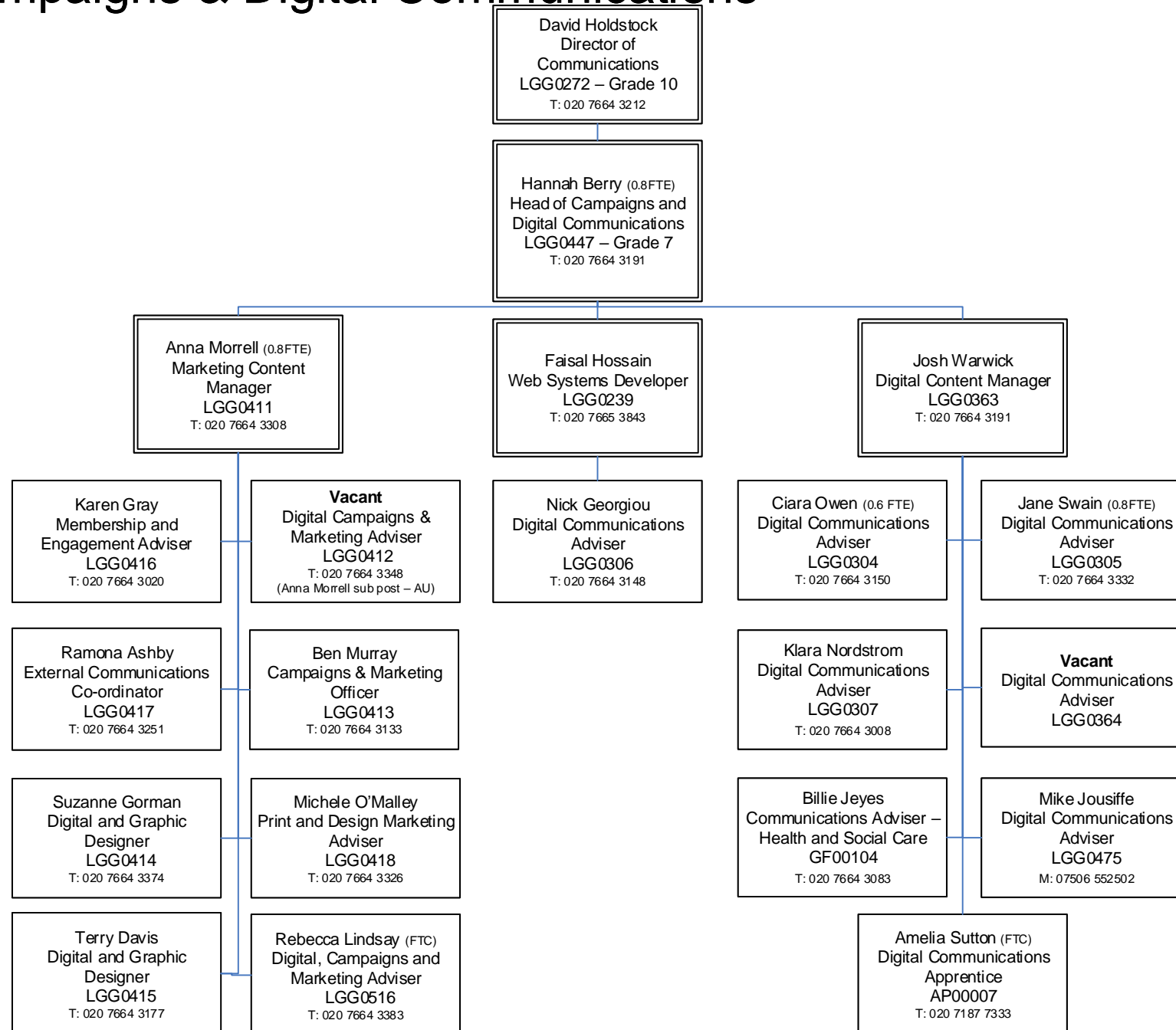
# Conference & Events Team



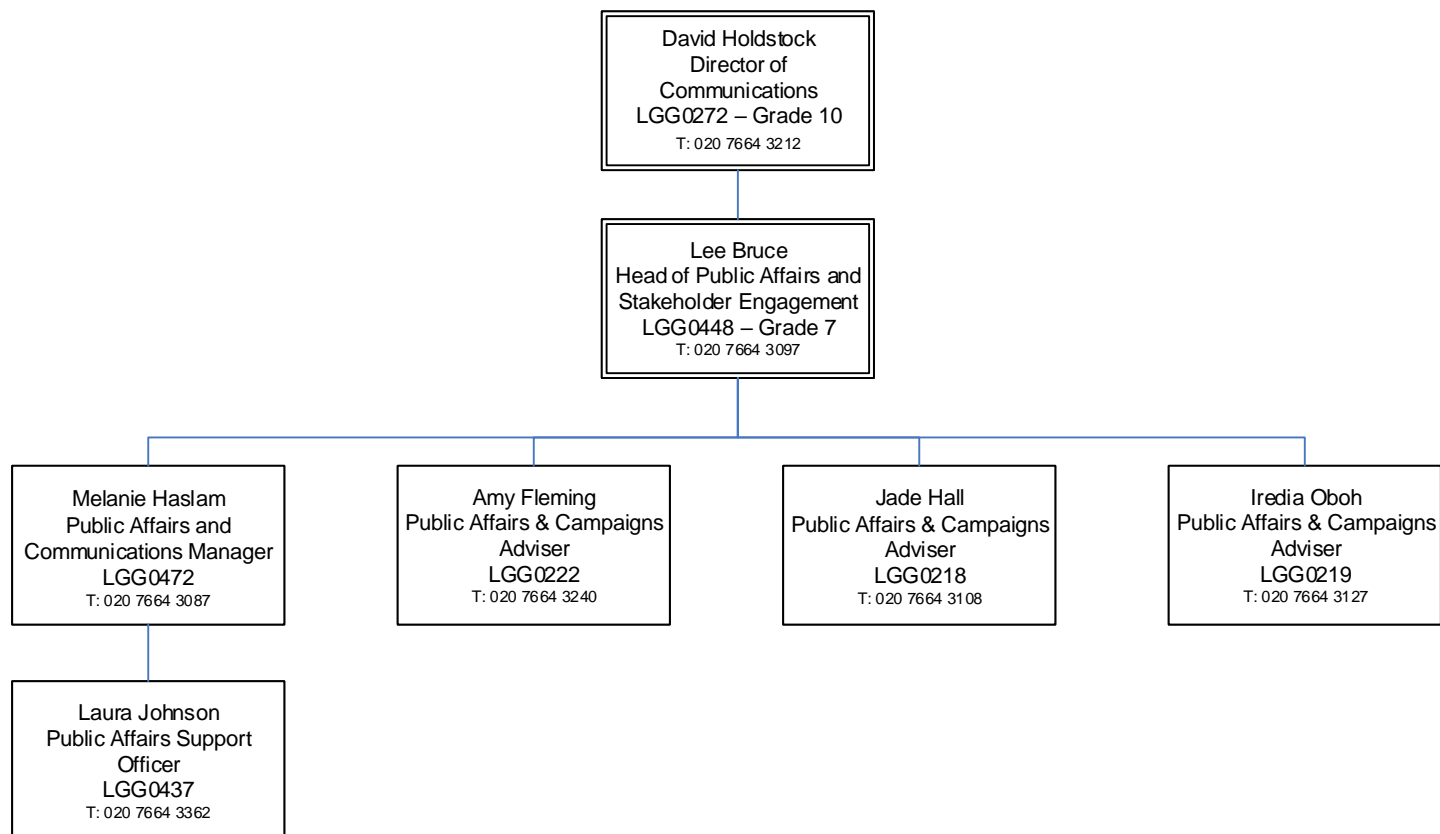
# News and Internal Communications



# Campaigns & Digital Communications



# Public Affairs & Stakeholder Engagement



BUC

Zeinab Maalow (Agency)  
Joint Inspection Team  
BUC0001

(