

# National Construction Category Strategy

‘The plan aims to deliver an agenda of whole life cost and value improvements (improved value for money), including social value.’





## Strategic Challenge



## Key Aims

- Covers the next 5 years
- 4 NPS themes run through the strategy:
  - demonstrating leadership
  - modernisation
  - maximising savings
  - supporting local economies

## Action Plan

- Sets out what Councils should be doing against a number of themes
- Measure your progress (maturity level) against
  - Exploring 
  - Trialling 
  - Rolling out 
  - Business as usual 

## Progress Assessments

Reviews what councils should be doing against a number of themes:

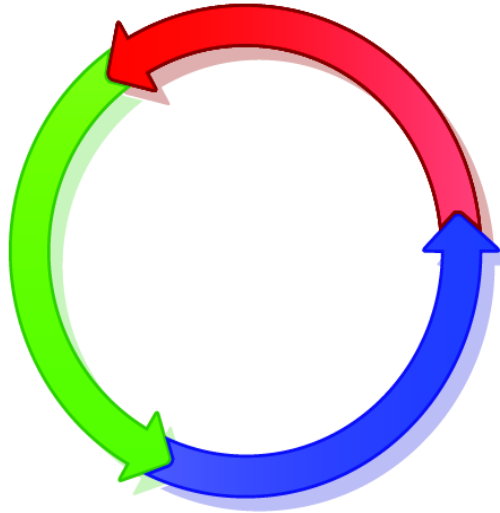
- Whole Life Cost and Value Improvements
- Social Value

In 2020 there will be a diagnostic exercise to determine the national picture

## Whole Life Improvements

Client Collaboration  
Innovation  
Pipeline

Effective Frameworks  
BIM  
Supply Chain  
Standardisation



Planned Maintenance  
Early FM involvement  
Benchmarking

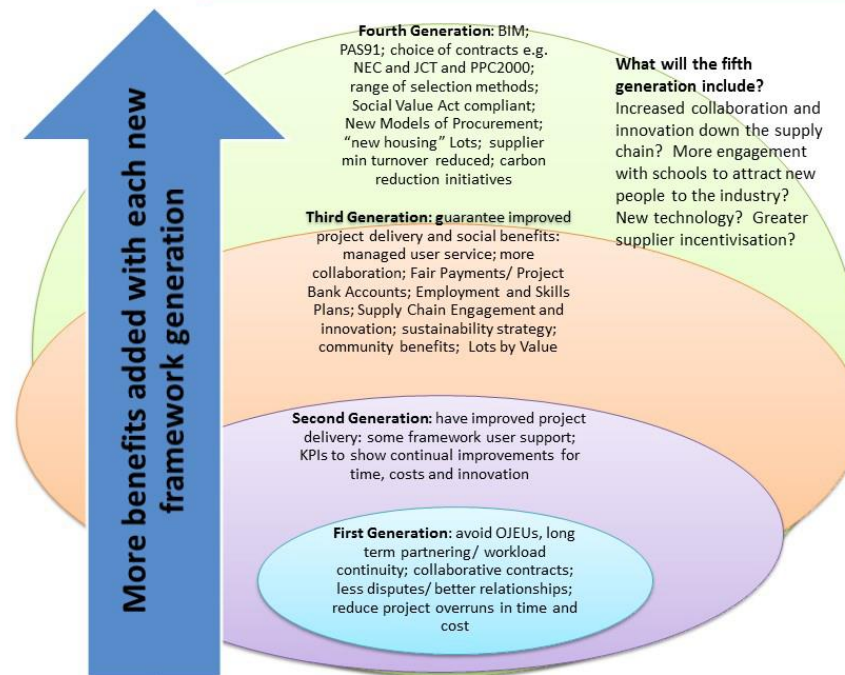
## Client Collaboration

- Collaborating nationally, regionally and locally on the construction agenda including in the context of frameworks and combined authorities/LEPs.
- Coordinating demand across the local public sector to determine when major projects and programmes are taken to the market.

## Effective Frameworks

Using framework agreements conforming to the effective frameworks standard as set out by the **National Association of Construction Frameworks:**

Figure 1 Framework Evolution





# National Construction Category Strategy

## Forward plans

Publishing a forward plan of construction spending (major projects) including steel content as published by national government. Joining with other councils either regionally or nationally to realise the synergies from strategic management of these forward plans.



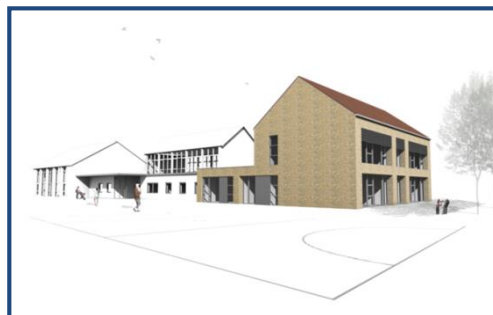
# National School Delivery Cost Benchmarking

The 2018 Report will be published later this Month

**668** projects

**126** Local Authorities

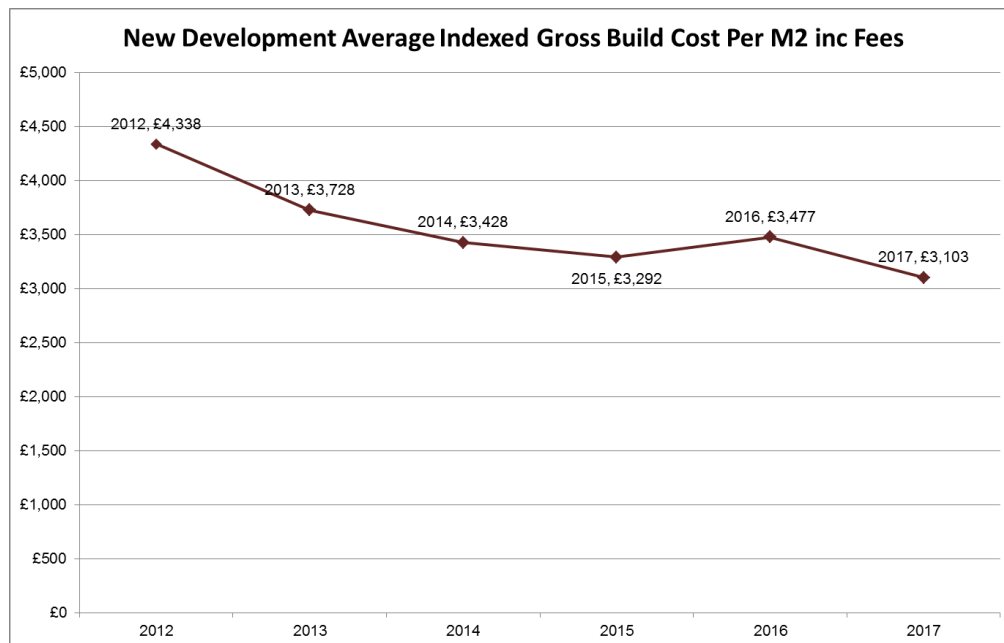
**£3.77 BN** combined project value



## Cost Benchmarking

Collaborating with other councils on cost benchmarking including schools, highways, housing and facilities management.

Graph 1 | New Build Gross Costs per m<sup>2</sup>



- 28%

	Year Gross Build Cost	Count of Sample
2012	£4,338	5
2013	£3,728	10
2014	£3,428	13
2015	£3,292	17
2016	£3,477	9
2017	£3,103	9

## Social value

- Education and training
- Standardise SQs
- Local supply chain opportunities
- Fair payment

## Summary

- Updates and builds on the 2015 strategy
- Encourages councils to assess their progress using a simple maturity model
- Aims to deliver whole life and value improvements
- Are you sector innovators?...please let us know!