

LNRS and the role of supporting authorities

- What are they and what do they mean for you?

23 May 2023

LNRS and the role of supporting authorities

- We have a lot of people in the 'room' so you are muted and cameras are off
- **Questions via Slido - Passcode: 0mk789**
 - **Go to slido.com and enter this code: 568 8173**
 - **Scan the QR code**
- Please 'like' or thumbs up questions you want to ask, rather than repeating the same question
- We may not get round to all your questions, but will look to add answers to our nature recovery FAQs page where relevant
- We will be using polls, so please answer these
- This event is being recorded, slides and the recording will be up on our website next week
- Feel free to use the chat to share what you're doing on LNRS
- Technical issues – please post in the chat or email Rebecca:
Rebecca.Moberly@local.gov.uk



Agenda

| | |
|---|--|
| 1. Introduction | Krista Patrick, PAS |
| 2. What are Local Nature Recovery Strategies and what is the role of supporting authorities? | Andy Holden, Defra |
| 3. What support is available? | Jenny Lake, Natural England Krista Patrick, PAS |
| 4. Local authority perspective | Francis Castro, GLA |
| 5. Q&A | All |
| 4. Summing up and feedback | Krista Patrick, PAS |
| Finish at 11.30 | |

Planning Advisory Service (PAS)

- PAS is part of Local Government family, Team of 11
- Funded by DLUHC to support **English planning authorities** (LPAs)
- Wide programme, including in 2023/24: design, infrastructure levy, Local Plans, Environmental Outcome Reports & development management designation
- Environmental planning, covering nutrient neutrality, nature recovery and biodiversity net gain



Home | Our work ▾ | Councillors ▾ | Plan Making ▾ | Development Mgmt ▾ | Topics ▾ | Find an event

Who we are and what we do

Getting planning right is important for councils. It allows them to manage development, ensuring that the best possible outcomes are delivered for places. It requires political and technical leadership and engaged communities. Helping councils is what we do.

What we do

The [Department for Levelling Up, Housing and Communities](#) provides a grant each year for the PAS so we can provide support to councils. We are funded to help get local plans up-to-date and to improve decision-making, as well as running event series on topical issues. We can also work with councillors and do thorough "peer challenge" reviews of planning departments. We believe in a 'sector led' improvement approach, where local authorities help each other to continuously improve.

[Privacy settings](#)

Bulletin

Sign up for our Bulletin, which brings you news of our latest support, case studies, events and muses.

Please answer the polls – pop-up or in the chat

We're keen to find out:

Q1. Have you attended a
PAS event before?

What's the problem?

Climate and biodiversity crises – UK is bottom 10% globally and worst G7 nation for biodiversity loss. Nature is key to mitigating and adapting to climate change, and supporting health and wellbeing.

Twin crises present environmental, social *and* economic impacts and risks. Economics of Biodiversity, Dasgupta Review (2021):

“Our economies, livelihoods and well-being all depend on our most precious asset: Nature”

Approach over past 70 years focus on nature *conservation*: preserving pockets of nature. Hasn't stopped decline → need to move towards nature restoration and **nature recovery**:

‘Bigger, better, more, more joined up’

(Lawton Report, 2010)

Overarching NRN strategic ambition

NRN is a **national network** of wildlife-rich places, connecting across urban, rural and coastal landscapes, **recovering nature at scale, benefiting people and nature.**

Establishing a **Nature Recovery Network**:

- Enhances, restores and expands existing wildlife sites
- Complements and connects sites through wildlife corridors and stepping stones, buffering zones of sustainably managed land
- Provides ecosystem benefits such as carbon capture, climate resilience, flood management, improved air and water quality, pollination, sustainable resources
- Enables access to and enjoyment of nature – benefitting health and wellbeing



A Green Future: Our 25 Year Plan to
Improve the Environment



Why is it important for local authorities?

For local authorities, nature recovery links to a range of agendas:

- Addressing the climate and biodiversity emergencies
- Flood resilience and drought management
- Mental and physical health and wellbeing
- Green infrastructure
- Access to greenspace and nature
- Energy efficiency
- Improving air and water quality
- Providing healthy soil that supports sustainable food production
- Thriving wildlife, including services like pollination
- Secure livelihoods and the basis of a healthy economy
- Place-making



What do we hear from local authorities?

Linking approach to
BNG and LNRS, and
to wider corporate
priorities

Resourcing, clarity
and certainty of
funding

How the BNG
national credits
scheme will work

The viability of going
over 10% BNG

BNG monitoring and
enforcement

Timeliness of and
need for regulations,
guidance and
governance

Evidence, skills and
expertise

Value of co-
ordination and
partnerships

Please answer the polls – pop-up or in the chat

We're keen to find out:

Q2. What is your current
level of awareness of LNRS?

Please answer the polls – pop-up or in the chat

We're keen to find out:

Q3. Has your authority started working with the responsible authority in your area on LNRS?

Q4. How well prepared is your authority to support delivery of the LNRS at the moment?

LNRS and the role of supporting authorities - What are they and what do they mean for you?

23 May 2023

Andy Holden, Defra



What are LNRs?

- A new system of **spatial strategies for nature**, introduced in the Environment Act 2021.
- There will be **48 LNRs** that cover all of England, with no gaps or overlap.
- They will make use of existing partnerships with local authorities, landowners, stakeholders, NGOs, businesses, charities, community groups etc, to write a local strategy that is **collaborative** and **locally-led**.
- Strategy preparation will be led by a **responsible authority** – local authorities appointed by Defra to lead the LNR for their area, aided by **supporting authorities**.
- Developed with **support and guidance** from Defra, Natural England, Environment Agency and Forestry Commission, with **funding to responsible authorities** to deliver this new burden.
- Each LNR will:
 - **agree priorities for nature's recovery**
 - **map the most valuable existing areas for nature**
 - **map specific proposals for creating or improving habitat for nature and wider environmental goals**



Why are they important?

- **Key part of a suite of new measures** – including biodiversity net gain and legally binding targets – created to help **reverse nature’s ongoing decline**
- Need to **target our efforts** where they will have the most impact, and help connect & expand existing areas of importance
- **Nature and “nature-based solutions”** – drawing together and coordinating actions from existing plans and strategies, and proposing what more should be done
- Providing a common focus for **action across the public, private and voluntary sectors**
 - Biodiversity net gain
 - Duty on public authorities
 - Integrate opportunities for nature recovery into the planning system.
 - Public funding and private green finance
 - Voluntary action
- **Propose action, deliver, review & update** – to track what’s done and keep renewing our ambition every 3-10 years

Responsible authorities

- **Appointed to lead** the LNRS for an area by the Secretary of State
- **Local leadership, knowledge and expertise**, underpinned by a national framework of regulations, guidance and support
- 48 provisional responsible authorities appointed who must: **prepare > publish > review > republish** their LNRS
- Regulations include rules on how to do these things to **promote consistency and minimum standards**
- Not prescriptive – about how responsible authorities **must work with others to create strategies with collective support** to create foundations for joint delivery





Supporting authorities

- Regulations create the role of “supporting authority” and say how responsible authorities must work with them
- Supporting authorities are:
 - **Other local planning authorities** (including National Park Authorities) in the Strategy area
 - **Natural England** for all LNRs
- ***Why are they needed?***
 - To make sure LNRs dovetail with the **planning system** – don’t want conflicting steers for the same piece of land. LNRs will identify areas for nature recovery for Local Plans; Local Plans will help LNRs understand which areas of land are earmarked for other uses
 - So that the LNR reflects LPA thinking on delivery of **BNG**
 - To provide a **different point of view & constructive challenge**
- NE will provide support and advice, and encourage consistency and join-up

What's the role?

- No requirements on the supporting authorities... but **very good reasons to get involved**
- Responsible authorities must:
 - take reasonable steps to **involve** supporting authorities
 - **share information** with them
 - **have regard** to their opinions
 - seek agreement to **consult**
 - seek agreement to **publish**
- Regulations geared to promote **early and frequent collaboration** – best route to getting LNRs which all parties are happy with and to avoid delays
- Issues should be flagged **early and informally** where possible. Formal concerns should still be **resolved locally** but can be escalated where this has not proved possible
- Responsible & supporting authorities should **think ahead** for sign off

Why get involved?

- So that LNRs are **useful for you**
- You'll have to “**have regard**” to LNRs – Government preparing advice on how LNRs will inform Local Plans
- Making sure LNRs are **consistent with Local Plans** will make his much easier
- Enable LNRs to be a **tool to help meet your own commitments and ambitions** – including BNG
- **Influencing** what gets proposed where, and **improving access to resources** to help get it done

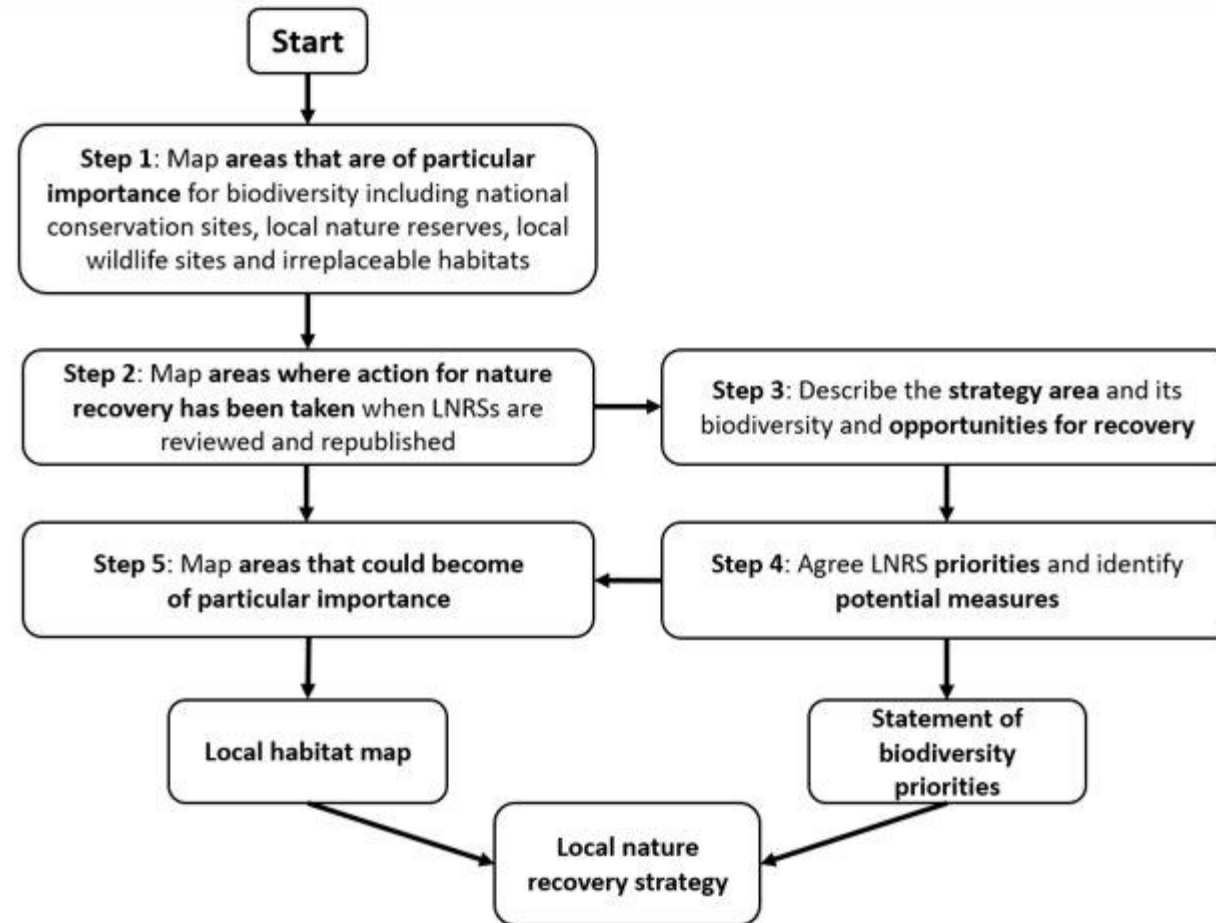


What to expect (1)

- **Everywhere is different** – different starting points and different relationships between local authorities
- Some responsible authorities have been waiting for their formal appointment, some are forging ahead
- **Statutory guidance creates a preparation process...**



How LNRSs are prepared



What to expect (2)

- Responsible authorities will need to **plan engagement early** – both with supporting authorities and others
- They will also need to think about **project governance** and how they plan to oversee the work
- Many of you will be aware who the responsible authority is likely to be for your area – everyone will know soon
- **Good relationships between responsible and supporting authorities are essential** – for preparation, delivery and future visions ...so make sure you have strong foundations
- Lots of past experience to build on, but it's a new process and we're keen to work together collectively to overcome challenges and make the most of the opportunity



What support is available?

23 May 2023

Jenny Lake, Natural England

Krista Patrick, PAS

local.gov.uk/pas

Natural England role

Supporting responsible authorities (RAs):

- Lead agency on LNRS for the defra group
- Lead for each LNRS in our NE area
teams helping RAs to:
 - understand their responsibilities
 - how to make an LNRS
- Inputting our local and technical expertise
- Helping nationally based organisations including government departments engage with individual LNRSs

A supporting authority to every LNRS:

- Governance
- Quality assurance
- Cross boundary working and best practice sharing



PAS Support on LNRS

Aim – to help Natural England understand how best to support and communicate with local authority audience on LNRS.

Activities

- **Help to gather and share** ideas / case studies / examples
- **Support the development and delivery** of responsible authority and supporting authority workshops including sharing best practice and stakeholder engagement
- **Feeding key issues** back to Government and Natural England and helping develop guidance including for LPAs
- **Develop ideas** on how local authorities can deliver nature recovery activities integrating actions to address climate change, biodiversity loss and wellbeing.



Local authority perspective

23 May 2023

Francis Castro, GLA

MAYOR OF LONDON

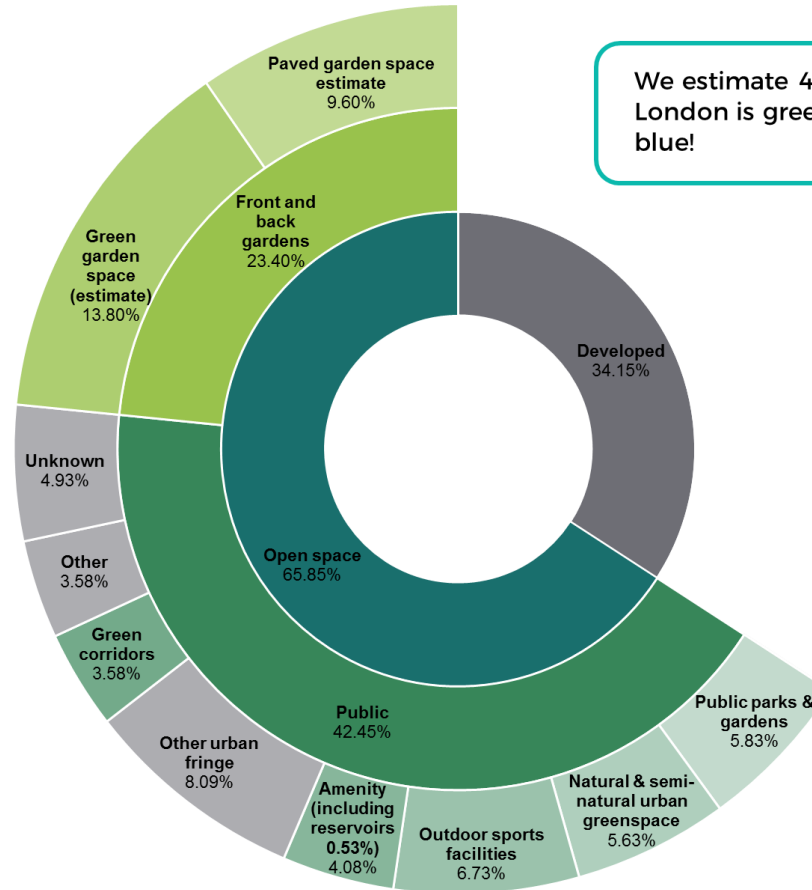
London Local Nature Recovery Strategy

Francis Castro, London Nature Recovery Officer, GLA

Tuesday 23 May 2023

MAYOR OF LONDON

Open Space in London



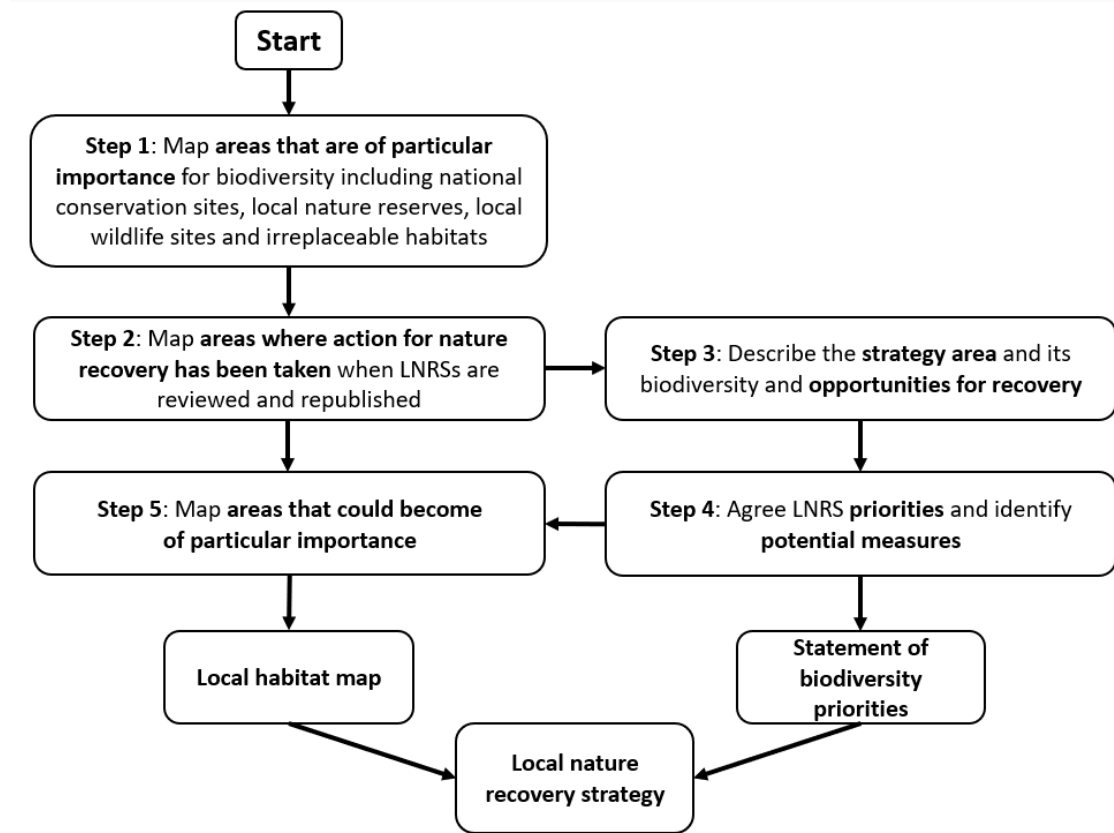
We estimate 49.5% of London is green and blue!



GiGL

Greenspace Information for Greater London CIC
the capital's environmental records centre

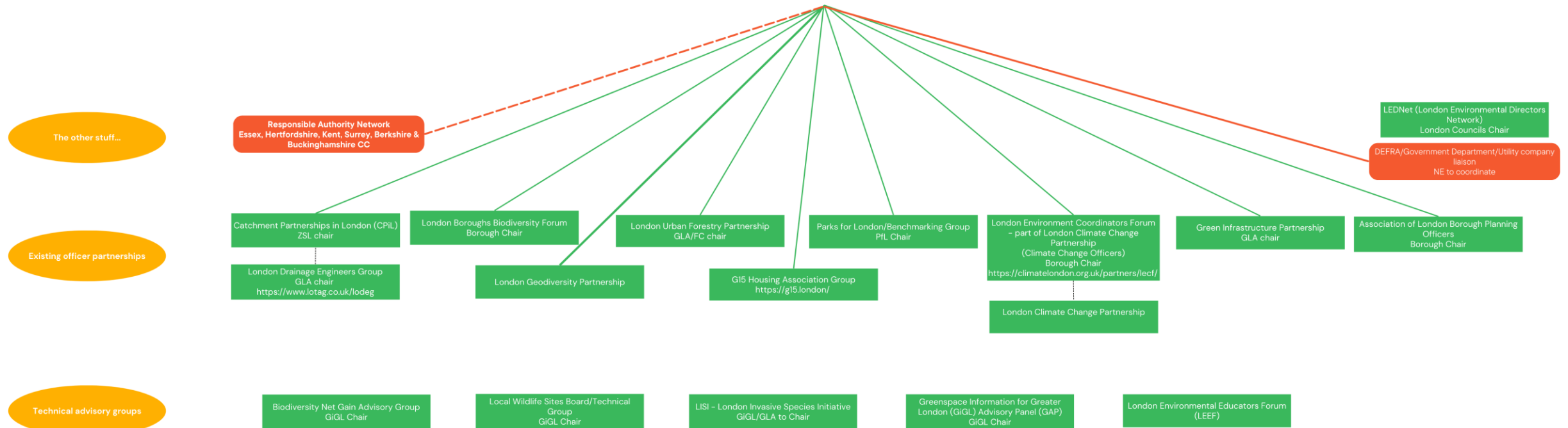
MAYOR OF LONDON



MAYOR OF LONDON

Partnership – Which existing partnerships do you participate in?

Utilise what is already there, build on existing good work, limit meeting fatigue and facilitate closer cooperation amongst the groups.



MAYOR OF LONDON



Working with one of our London partnerships, Parks for London, we have already held our first conference to discuss LNRS and BNG, in its wider policy context, this April:
67 attendees representing 40 organisations
Representing Local Authority parks professionals, ecologists and planners, along with other sector partners

MAYOR OF LONDON

Become a LERC partner (if you are not already)... GiGL for those in London

London Borough SLA Partners

April 2023

-  SLA Partner
-  Non-partner



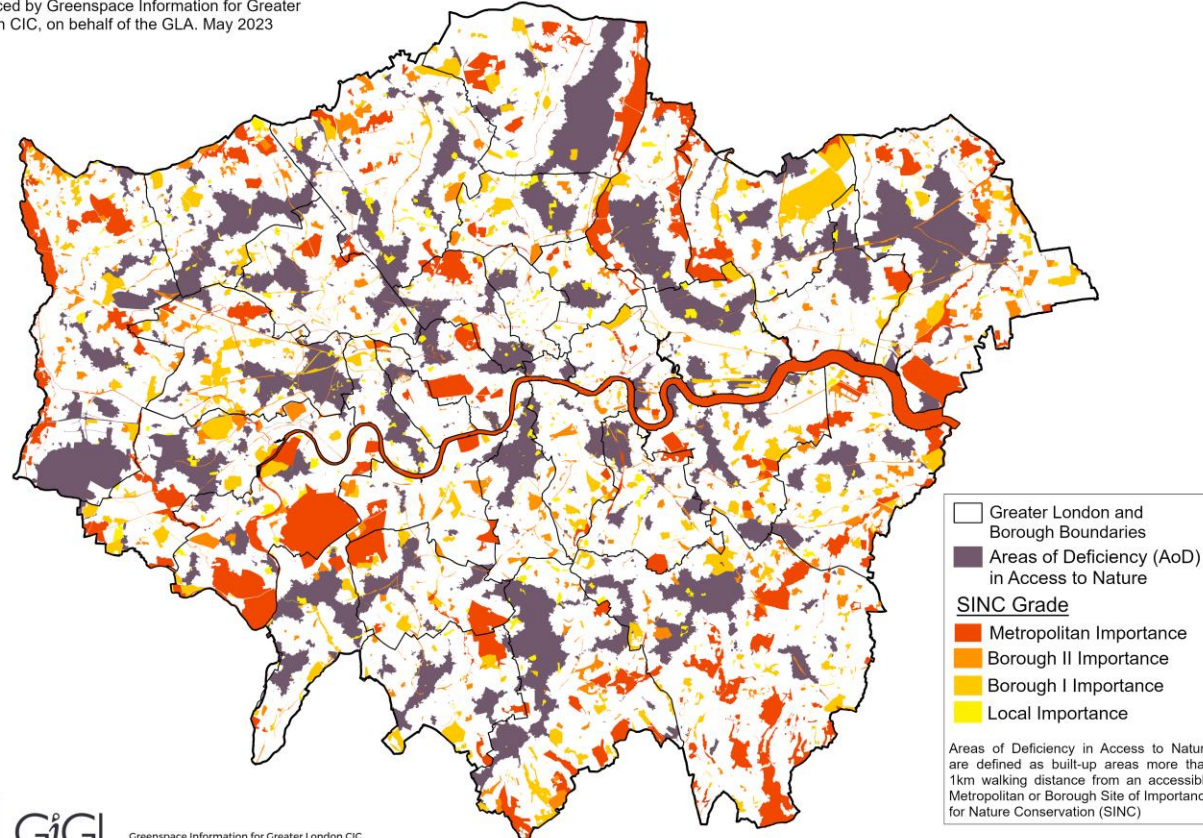
GiGL
Greenspace Information for Greater London CIC
the capital's environmental records centre

MAYOR OF LONDON

- How does this align with other priorities... climate adaptation/access to nature
- This will help pull together strategic biodiversity priorities

Areas of Deficiency in Access to Nature in Greater London

Produced by Greenspace Information for Greater London CIC, on behalf of the GLA. May 2023



GiGL

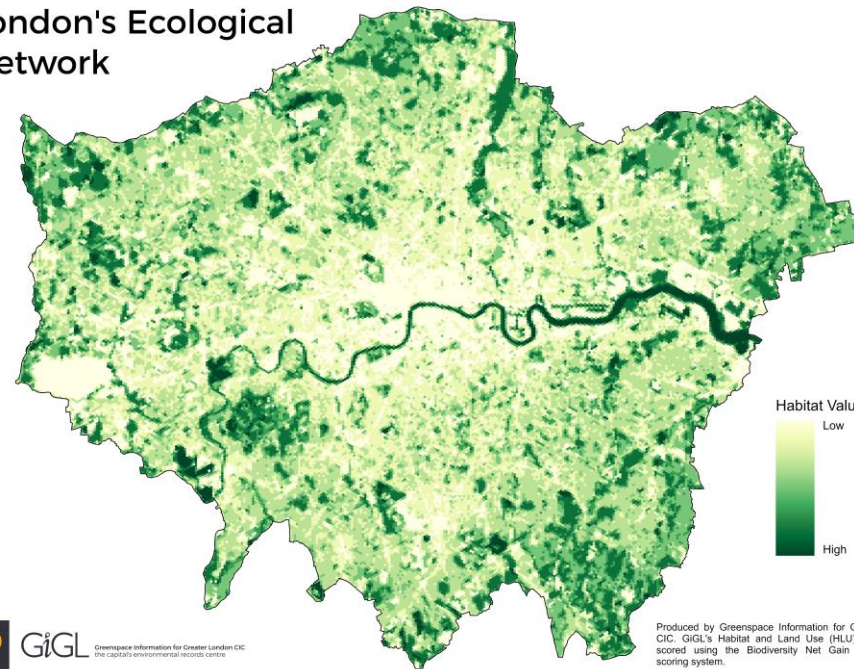
Greenspace Information for Greater London CIC
the capital's environmental records centre

Contains Ordnance Survey data © Crown Copyright and Database rights. 100032216 GLA (2023)

MAYOR OF LONDON

- LNRS will be here to guide and support the preparation/review of Local Plans
- Do you know if your current Local Plan proposals will result in Biodiversity net loss or onsite gain?!
- Do you know where your Biodiversity enhancement/creation opportunity areas are?

London's Ecological Network



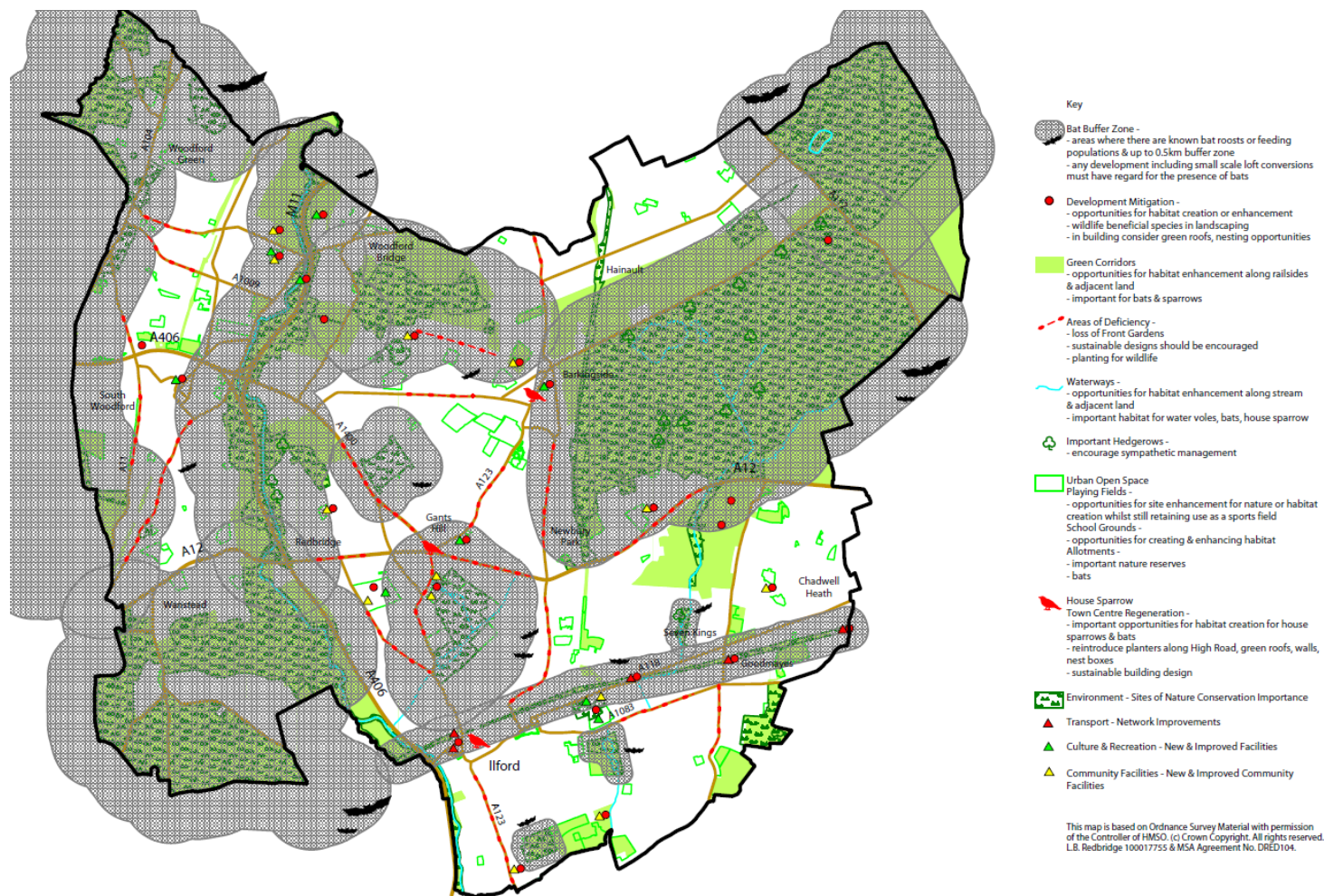
MAYOR OF LONDON

Next steps/guidance for supporting authorities in Greater London

- If you have recently updated your Biodiversity Action Plans, don't worry! LNRS will complement it now and provide future structure.
- If you have an old Biodiversity Action Plan, LNRS will provide structure for the new one... Nature Recovery Action Plan or BAP with a map!

MAYOR OF LONDON

BAP with a map... London Borough of Redbridge 2007 Biodiversity Action Plan



Hackney Parks and Green Spaces Strategy

2021 - 2031

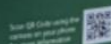




What should our
parks and green
spaces look like
in 2031?



Have your say on Hackney's
Parks and Green Spaces Strategy
www.hackney.gov.uk/parks
or call 020 8356 3000



Hackney

*“Can we start allowing
areas to rewild naturally?
...Nature really does
know better than us”*



We will be more environmentally sustainable

21/ Work towards becoming a Zero Carbon service by 2031

22/ Aim to re-use more green waste within parks and green spaces

26/ Increase biodiversity across Hackney in line with the emerging Local Nature Recovery Plan, creating more wild areas across all parks and green spaces

27/ Eliminate all annual planting and replace it with more sustainable and drought tolerant planting schemes

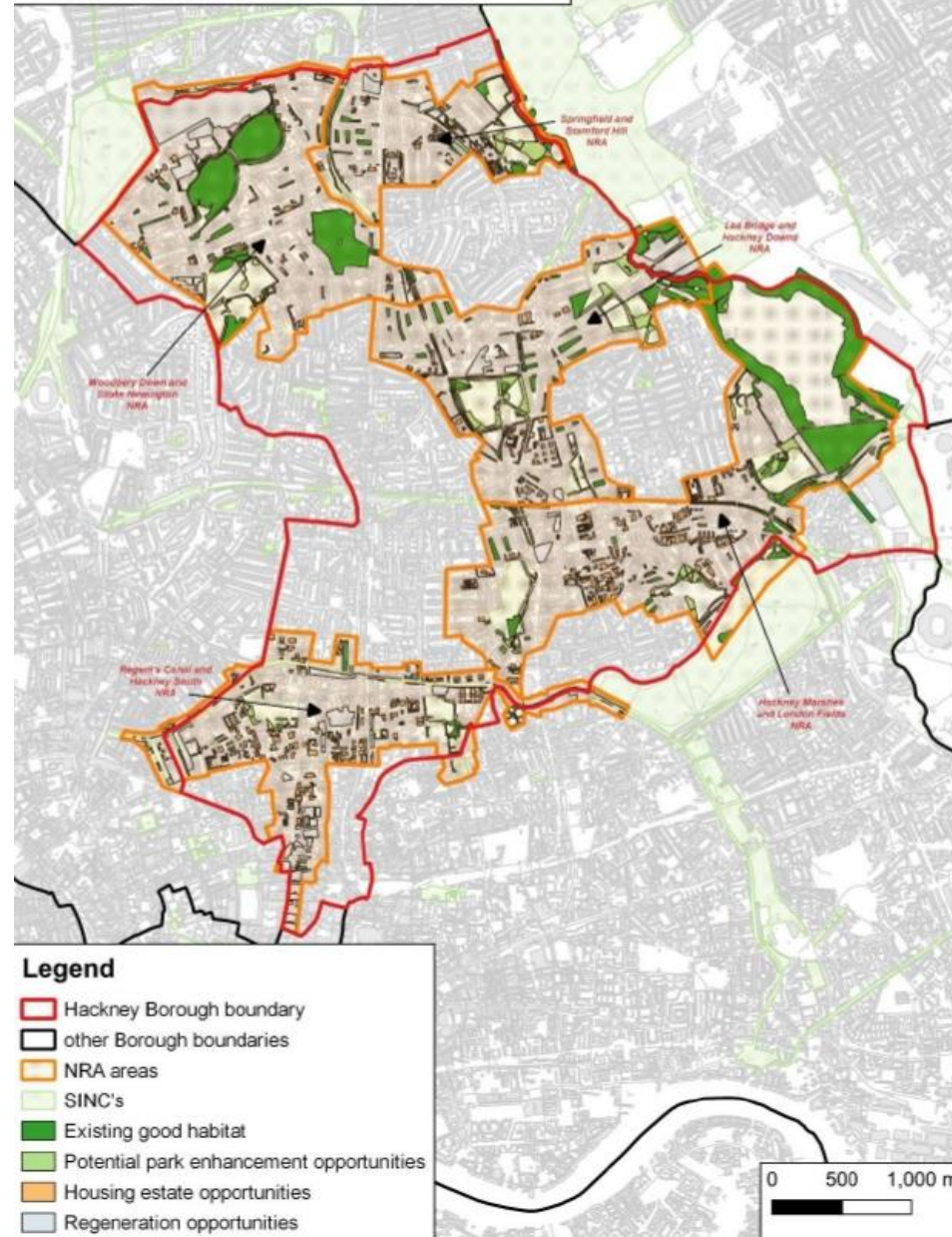
28/ Significantly reduce the use of Glyphosate, and continue to explore alternatives

29/ Follow the recommendations of the emerging Green Infrastructure Strategy where they relate to parks and green spaces, including identifying opportunities to connect parks and green spaces together



Hackney Nature Recovery Network

Map compiled by London Wildlife Trust April 2021. This product includes mapping data licensed from Ordnance Survey with the permission of HMSO © Crown Copyright 2020. All rights reserved. License number 100019635. Also contains OS OpenMap Local data. © Crown Copyright 2020.









Wildlife Gardeners of Haggerston @WGHaggerston · Oct 24, 2022 ...

Great to show [@carowoodley](#) & [@mayorofhackney](#) some of the work of the Old Lea River Restoration project and put them to work sampling in the river.

The Mayor caught a Bullhead!



2



15













Policy G1 Green infrastructure

- A London's network of green and open spaces, and green features in the built environment, should be protected and enhanced. Green infrastructure should be planned, designed and managed in an integrated way to achieve multiple benefits.
- B Boroughs should prepare green infrastructure strategies that identify opportunities for cross-borough collaboration, ensure green infrastructure is optimised and consider green infrastructure in an integrated way as part of a network consistent with Part A.
- C Development Plans and area-based strategies should use evidence, including green infrastructure strategies, to:
 - 1) identify key green infrastructure assets, their function and their potential function
 - 2) identify opportunities for addressing environmental and social challenges through strategic green infrastructure interventions.
- D Development proposals should incorporate appropriate elements of green infrastructure that are integrated into London's wider green infrastructure network.

MAYOR OF LONDON

THE LONDON PLAN

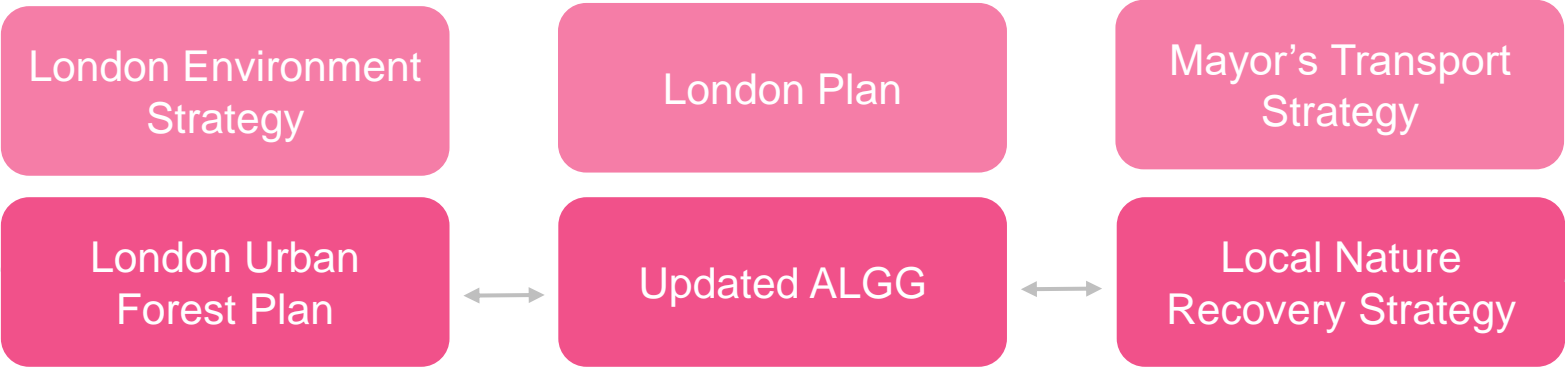


THE SPATIAL DEVELOPMENT
STRATEGY FOR GREATER LONDON

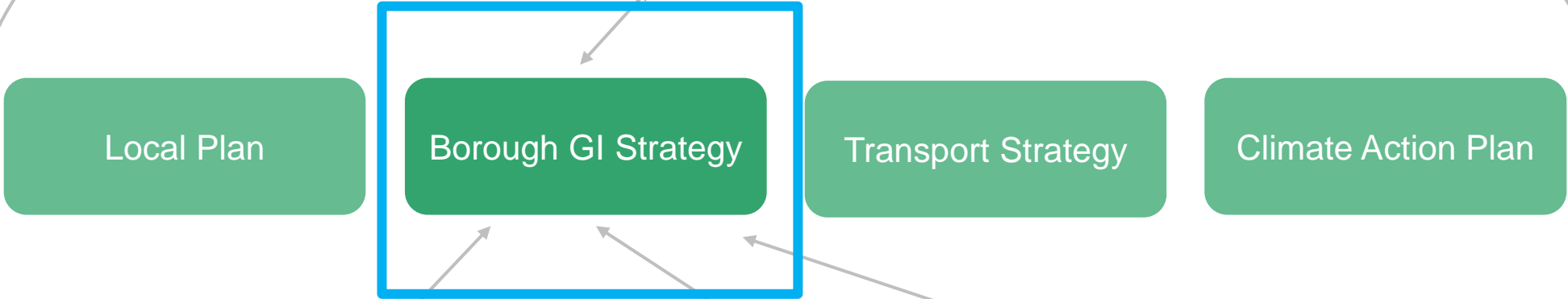
MARCH 2021

context

London Level



Local Level



Operational Plans

Where these already exist, GI Strategy can be prepared 'bottom-up'



MAYOR OF LONDON

Francis Castro

**London Nature Recovery Officer
GREATERLONDONAUTHORITY
Union Street, London SE1 0LL
Mobile: 07720100917**

**london.gov.uk
francis.castro@london.gov.uk**



Questions and answers

- Please submit your questions through Slido:
- **Slido - Passcode: 0mk789**
 - Go to slido.com and enter this code: 568 8173
 - Scan the QR code
- We will answer as many as we can today
- We will add answers to FAQs where relevant on the PAS website



Summing up & next steps

What do you think?

How did we do?

Next steps:

- Ongoing support on biodiversity net gain and nature recovery through PAS projects

For more information:

- <https://www.local.gov.uk/pas/topics/environment>
- Sign up to the PAS bulletin:
<https://www.local.gov.uk/pas/our-work/keep-touch>

