
PLANNING ADVISORY SERVICE

Planning for a Better Environment

Workshop - 14th & 15th July 2022

Planning for a Better Environment

**Chris Fridlington – Assistant Director
Development and Planning**

chris.fridlington@bolsover.gov.uk

01246 242354

Chris McKinney – Planning Policy Manager

chris.mckinney@bolsover.gov.uk

01246 242292



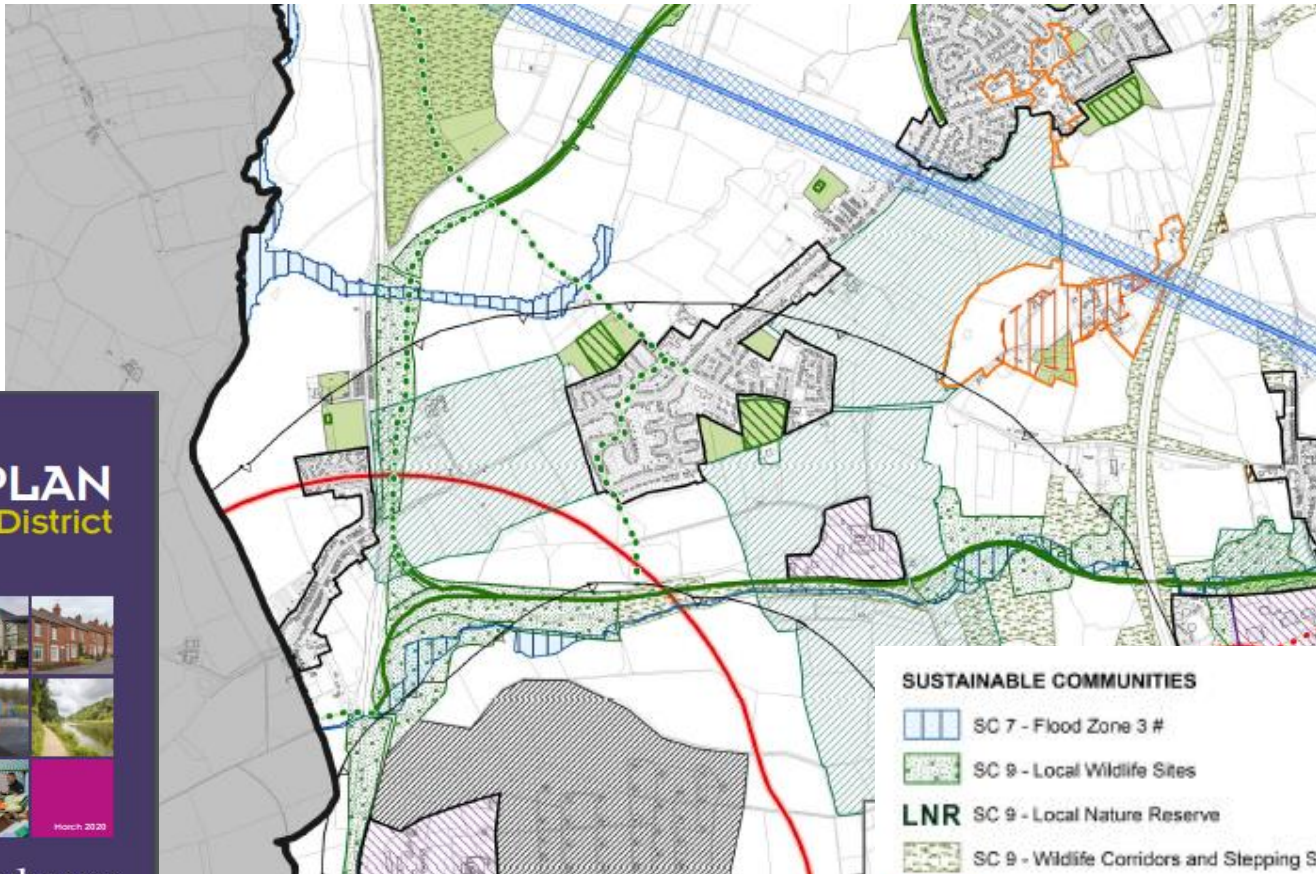
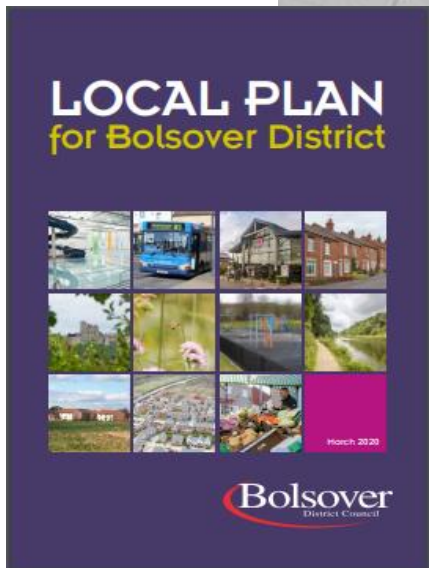
What we did at Bolsover

Plan Making

- a) worked with Derbyshire Wildlife Trust in early 2018 to develop a network of Wildlife Corridors and Stepping Stones;
- b) these Wildlife Corridors and Stepping Stones were included in the Publication Local Plan under our Biodiversity and Geodiversity policy and added to the Policies Map;
- c) in terms of securing opportunities for biodiversity improvement, this policy requires development proposals to:

“development proposals will be required to include proportionate measures to contribute, where possible, to a net gain in biodiversity and / or geodiversity, through the creation, restoration, enhancement and management of habitats and features including measures that help to link key habitats”

What we did at Bolsover



SUSTAINABLE COMMUNITIES

SC 7 - Flood Zone 3 #

SC 9 - Local Wildlife Sites

LNR SC 9 - Local Nature Reserve

SC 9 - Wildlife Corridors and Stepping Stones

SC 15 - Hazardous Substances Consent Zones

SC 16 - Conservation Areas

SC 18 - Area of Particular Potential for Medieval Archaeology

SC 20 - Registered Park and Gardens

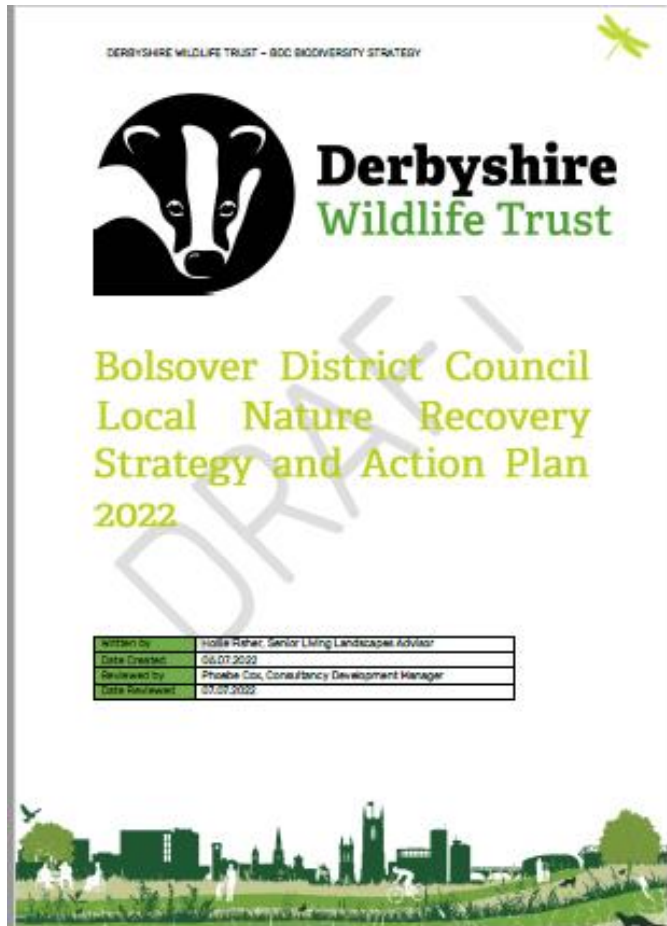


What we are doing now

Local Nature Recovery Strategy

- a) commissioned Derbyshire Wildlife Trust to prepare a Local Nature Recovery Strategy for Bolsover District to carry this policy work forward;
- b) given our good planning position, we wanted to get a head start of the national position and so be prepared and agile to respond to future duties;
- c) we also successfully secured funding from the Woodland Trust for our Bolsover Community Woodlands project;
- d) to support these two projects, we looked at our own land estate and issued a Call for Sites to update our Land Availability Assessment evidence base, which in addition to the usual housing and employment land included a call for sites for:
 - habitat creation;
 - environmental restoration;
 - tree planting.

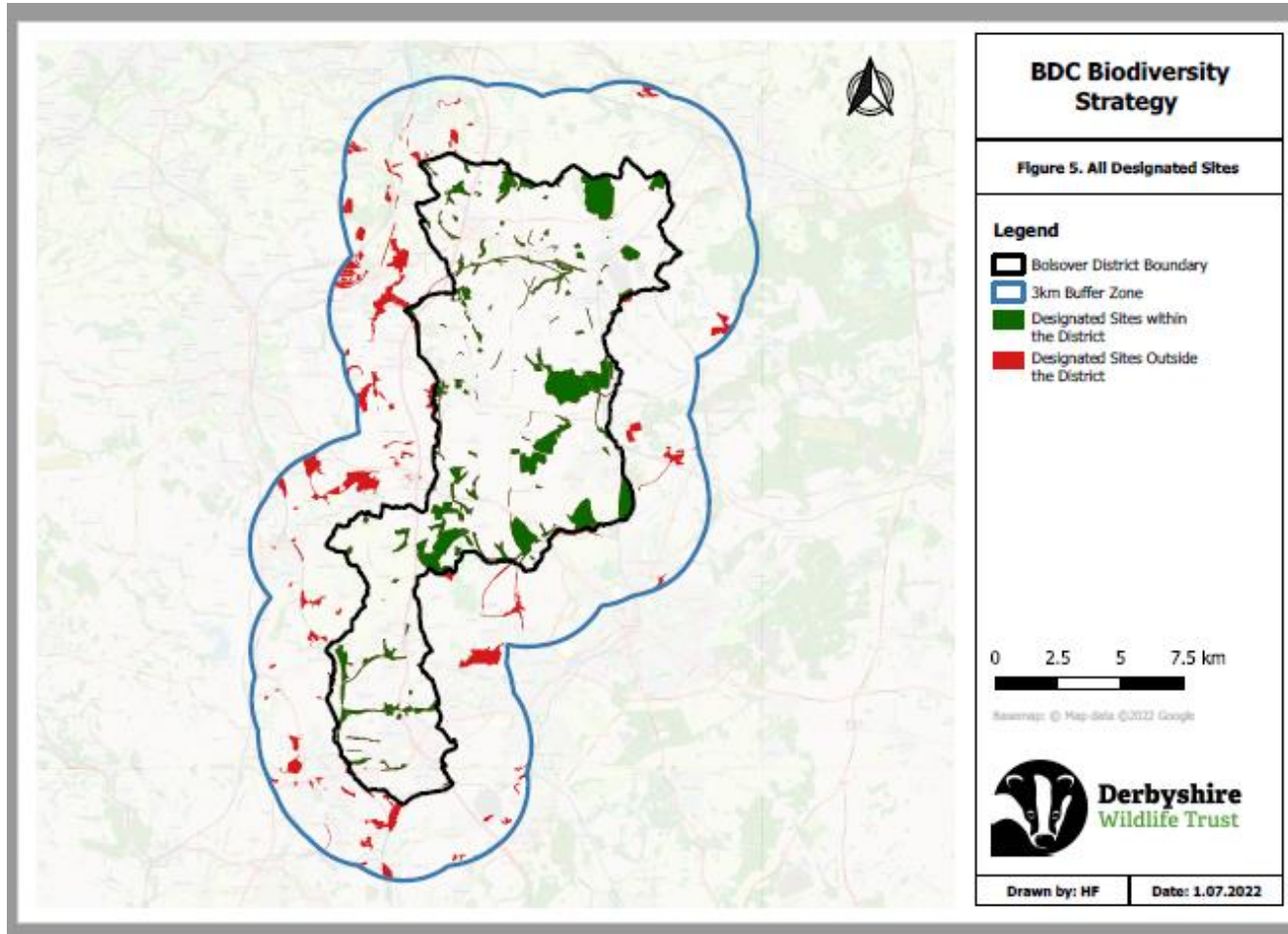
What we are doing now



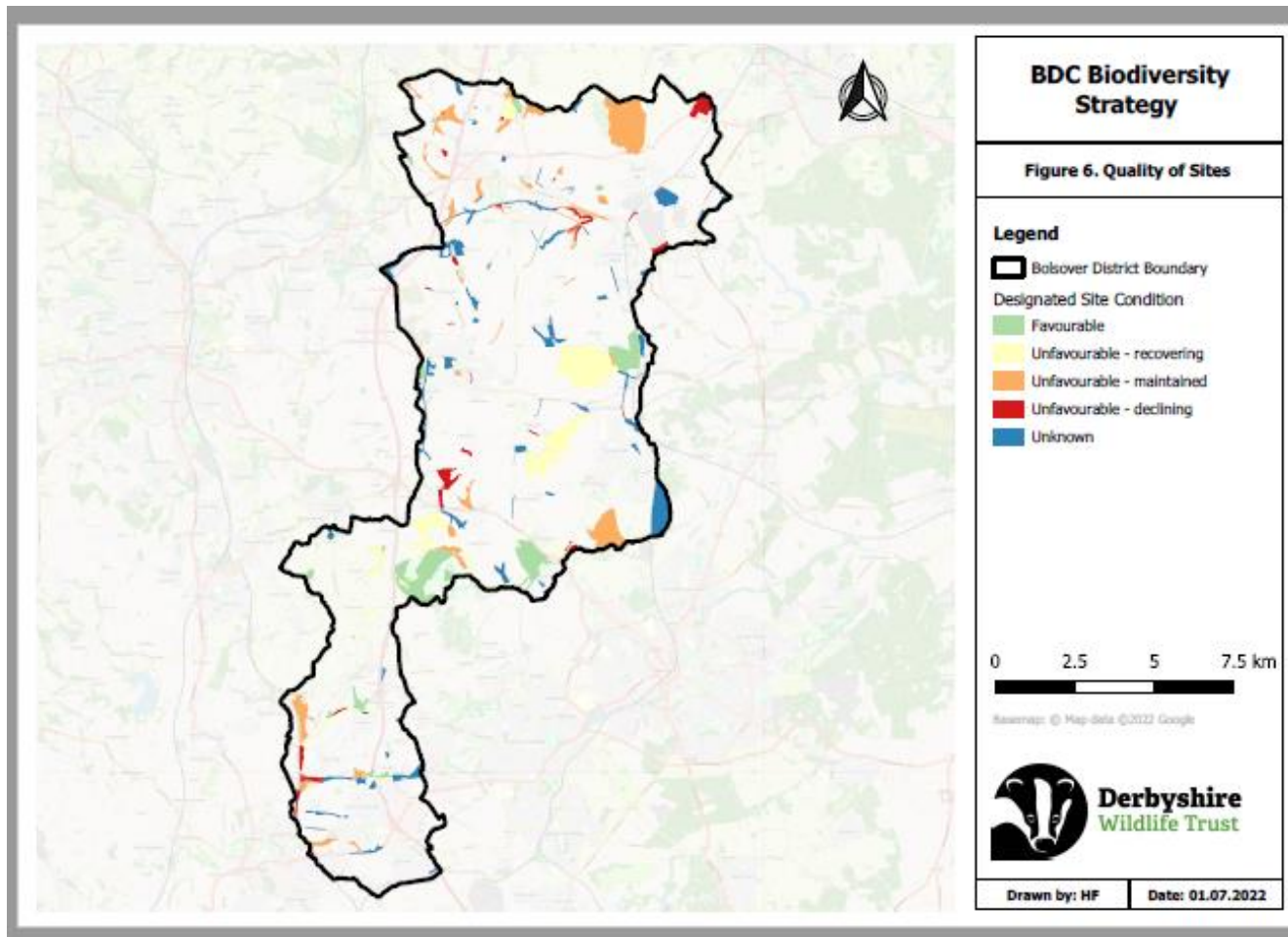
This identifies:

- a) baseline biodiversity data, both extent and condition quality;
- b) existing networks and strategic gaps;
- c) priority biodiversity and recovery network opportunities, namely:
 - open nature;
 - woodland nature;
 - wetland nature;
 - specific habitats and species.
- d) funding opportunities;
- e) management recommendations;
- f) action plan.

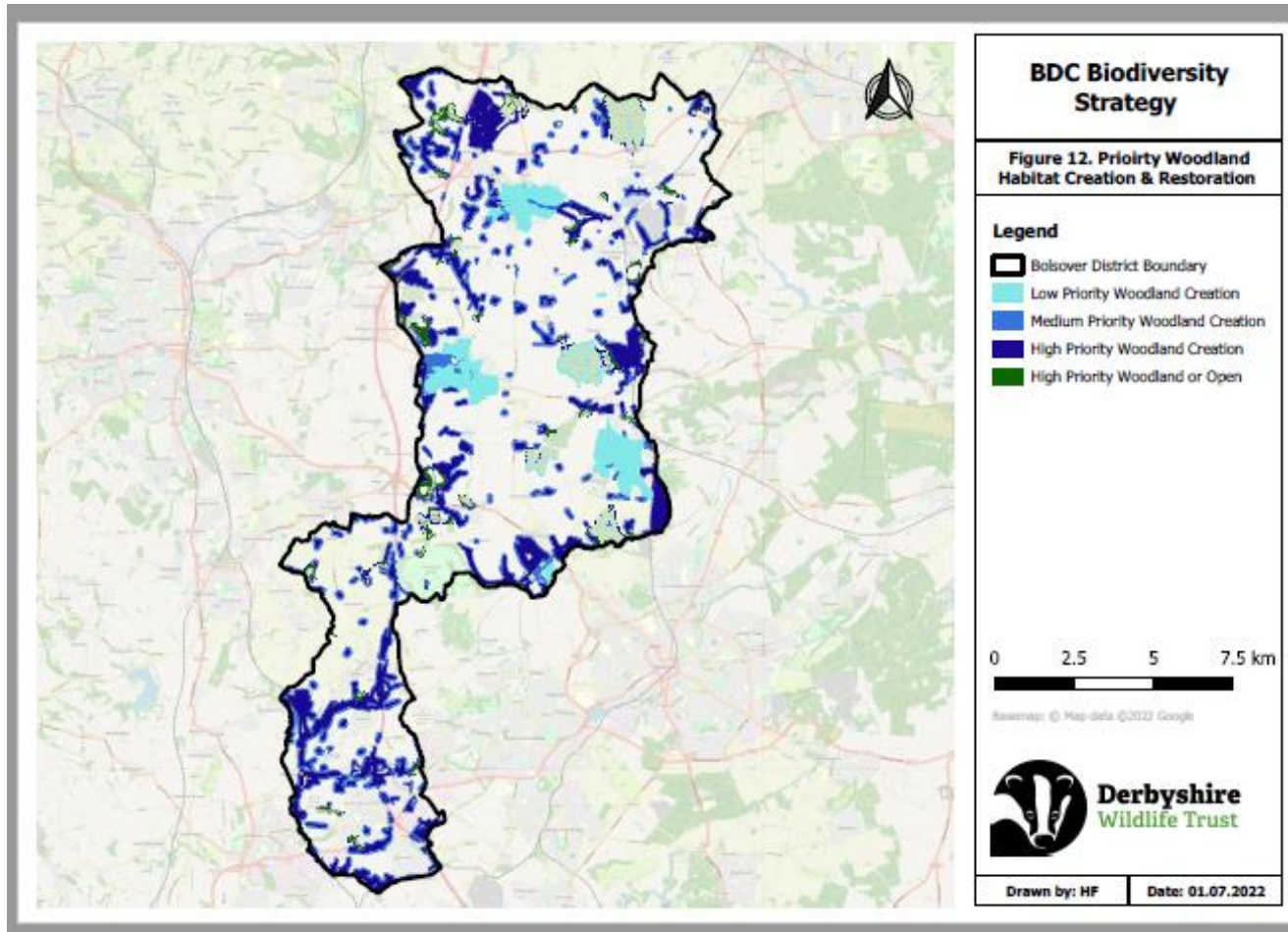
What we are doing now



What we are doing now



What we are doing now





What we are doing next

Supplementary Planning Advice

- a) looking at how we carry this planning work and the new Environment Act duties forward into our existing planning processes;
- b) preparation of a Supplementary Planning Document style document to supplement existing Local Plan policy and help inform the determination of planning applications by:
 - reinforcing the priority of on-site delivery of net gain;
 - embedding the priority biodiversity and recovery network opportunities;
 - setting out off-site priority locations for net gain;
 - identifying the key improvements to be secured;
 - setting out methodology to calculate financial sums.
- c) set out links to suitable promoted sites for habitat creation, environmental restoration and tree planting.



What we would do differently

Plan Making

Basic level

- a) build the substantial evidence base work into the timetable for preparing our Local Plan and our budgets for developing the Local Plan evidence base;

Advanced level

- b) consider developing a strategic spatial option at Issues and Options stage that directs development towards those locations where we could best harness developments to deliver priority improvements to our Local Nature Recovery Network.