



Office for Health
Improvement
& Disparities

Mind the Gap: working together to reduce health inequalities

Professor Kevin Fenton CBE FFPH

Regional Director London, Office for Health Improvement & Disparities

Regional Director of Public Health, NHS London

Statutory Health Advisor to the Mayor of London, GLA and London Assembly

@ProfKevinFenton

COVID-19 and Health Equity: Securing the pandemic's lessons to drive improvement in health outcomes and tackle inequalities

- COVID shone an unrelenting light on **persistent, emergent and pervasive social and health inequalities**.
- It also highlighted the importance of **place-based approaches** for addressing key current public health challenges in an equitable and sustainable way.
- The importance of **community-centred and culturally competent public health programmes** and need to engage communities in every aspect of the design, delivery, scale up and evaluation.



Well resourced, multi-level, equity-focused public health, pandemic preparedness and emergency response infrastructure and **systems**.



Stronger, innovative and agile **partnership** working across health and care systems, including voluntary sector, community and social care.



A commitment to high quality, robust programme and health outcomes **data** and metrics, to better identify, understand and tackle health inequalities



Robust, pragmatic, holistic, programme relevant and participatory **research** better able to understand and meet the emerging needs of local communities.



Strengthened **community-centred** and asset-based community approaches, outreach and engagement to improve health and tackling disparities



London's ambition will be delivered through a new system

The ambition to become the world's healthiest global city will be delivered partly through these new and developing health and care structures, nested with the existing structures of local government and the NHS

Other partners and strategies, such as the London Recovery Board will also be key.

Setting priorities for London's wellbeing, Health and Healthcare

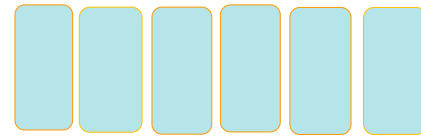
Local Authorities

Primary Care Networks

Voluntary Sector Organisations

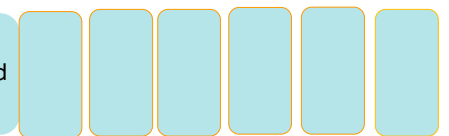
Decision Makers

Planning and Strategies



Health and Wellbeing Strategies (x33)

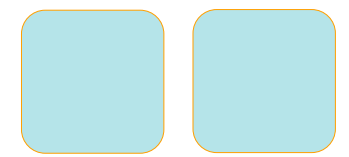
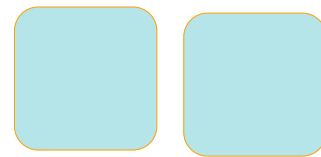
Priorities and Plans created by the Local Health & Wellbeing Board underpinned by a Joint Strategic Needs Assessment (JSNA)



Integrated Care System

Emerging ICS Partnerships Priorities (x5)

These may form 'Integrated care strategies' to improve healthcare, social care and public health across the whole population, built bottom-up from local assessments of needs and assets identified at place level and focusing on reducing inequalities



London Councils

ADPH London

Office for Health Improvement and Disparities London

UK Health Security Agency

NHSE/I

Greater London Authority

The London Health Inequalities Strategy

The Mayor's statutory strategy and implementation plan that provides a framework for health inequalities activity across the lifecourse in London, with particular focus on the wider determinants of health. Showcases Mayoral and partner work, committing to action across the partnership

The London Health and Care Vision

A shared ambition across UKHSA OHID, GLA, The NHS and local government to make London the healthiest global city, articulated in 10 priority aims and 4 foundational enablers

London Recovery Programme

A mission based approach that will bring together the public, private and voluntary sectors to support an equitable successful recovery from the pandemic

Neighbourhoods

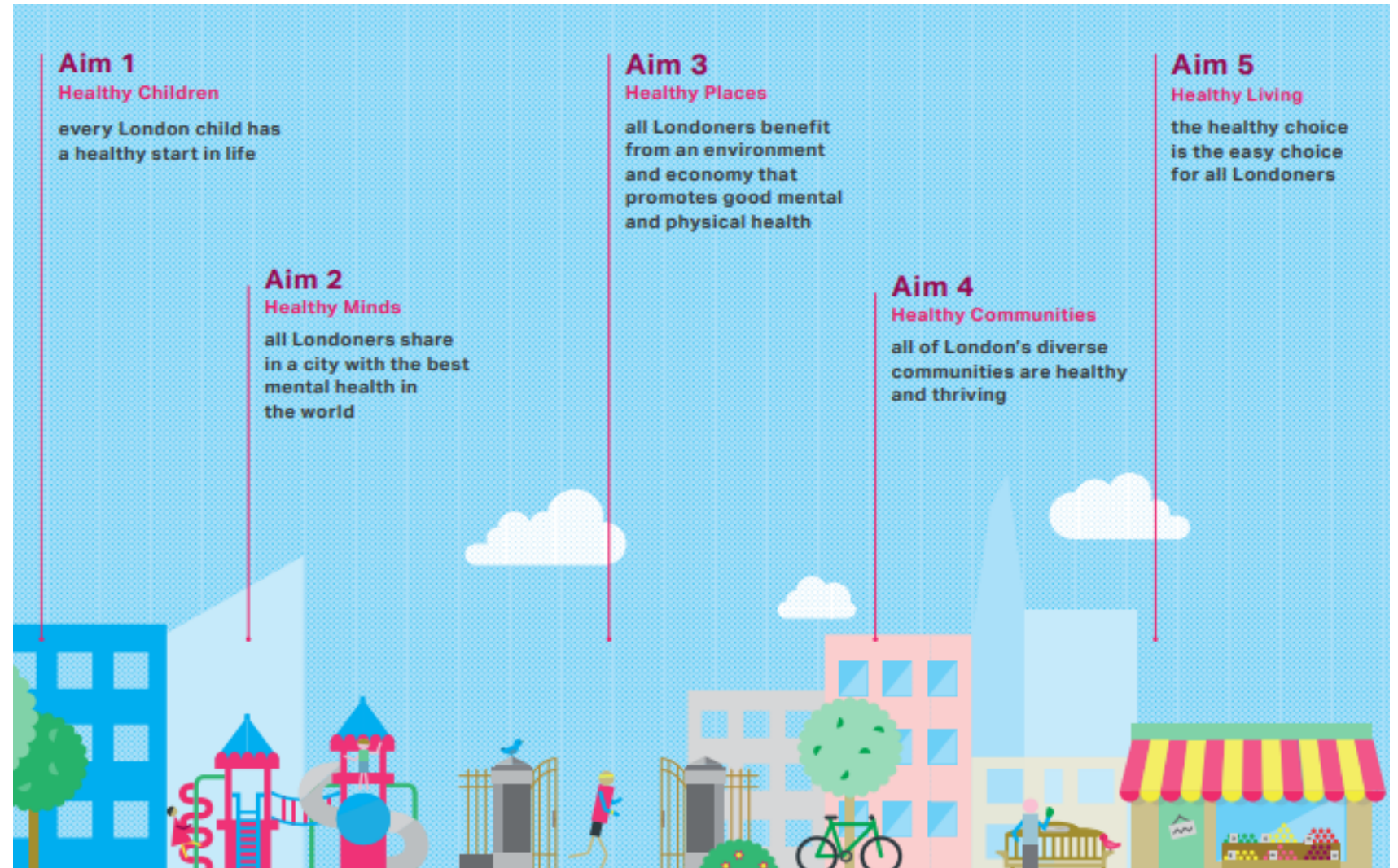
Places

Systems

City

The London Health Inequalities Strategy 2018-28

*Vision:
A healthier, fairer
city, with all
Londoners
having the best
opportunities
to live a long life
in good health.*



A shared vision for how the *health and care system* works together to tackle some of our biggest challenges

Our Vision for London



The next steps on our journey to becoming the healthiest global city



Reduce childhood obesity



Improve the emotional wellbeing of children and young Londoners



Improve mental health and progress towards zero suicides



Improve air quality



Improve tobacco control and reduce smoking



Reduce the prevalence and impact of violence



Improve the health of homeless people



Improve services and prevention for HIV and other STIs



Support Londoners with dementia to live well












Improve care and support at the end of life



LONDON RECOVERY

➤ **Grand Challenge:** Restore confidence in the city, minimise the impact on London's communities and build back better the city's economy and society.

 A Green New Deal	 A Robust Safety Net	 High Streets for All
 A New Deal For Young People	 Good Work For All	 Mental Health & Wellbeing
 Digital Access For All	 Healthy Food, Healthy Weight	 Building Strong Communities

Cross-Cutting Principles

Recognizing and addressing structural **inequalities**, promoting a fairer, more inclusive London and focusing on supporting the most vulnerable.

Prioritising sustainability, mitigating climate change and improving the resilience of our city.

Collaborating and involving London's diverse communities.

Improving the **health and wellbeing** of all Londoners.

Innovating and using **digital technology and data** to meet emerging needs.

Ensuring affordability of measures and providing **value for money**.

Key Outcomes

Reverse the pattern of rising unemployment and lost economic growth caused by the economic scarring of Covid-19.

Support our communities, including those most impacted by the virus.

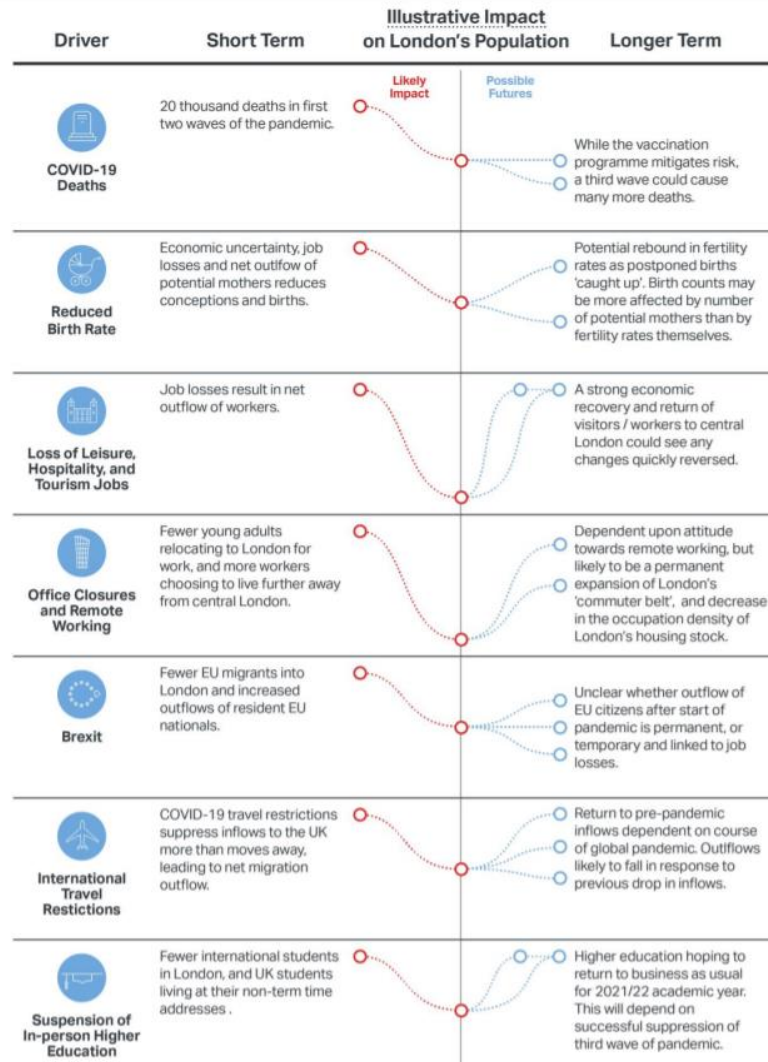
Narrow social, economic and health inequalities.

Accelerate delivery of a **cleaner, greener London**.

Help young people to flourish with access to support and opportunities.

Our approach to tackling health inequalities must be rooted in a deep understanding of the people in our complex City

Population change in London during the COVID-19 pandemic
GLA City Intelligence, May 2021



The wider impacts of COVID-19 and recovery of population health in London

Initial findings from a series of seven rapid evidence reviews and stakeholder workshops



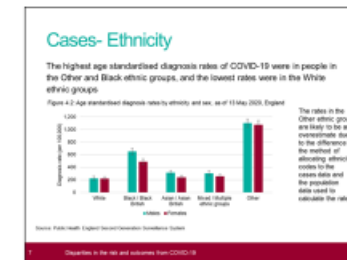
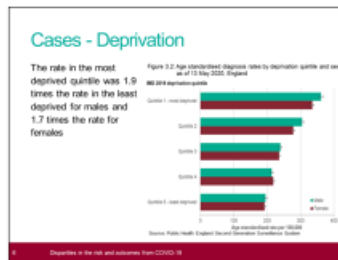
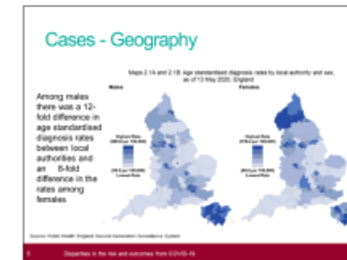
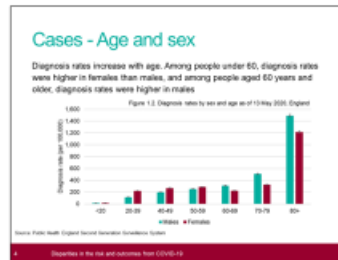
MAYOR OF LONDON



Public Health England

COVID-19: Disparities in risks and outcomes

MIXED METHODOLOGY INVESTIGATION INTO COVID-19 RELATED HEALTH DISPARITIES



Public Health England
Preventing and improving the nation's health

Disparities in the risk and outcomes of COVID-19

Beyond impact of...

COVID-19: review of disparities in risks and outcomes - GOV.UK (www.gov.uk)