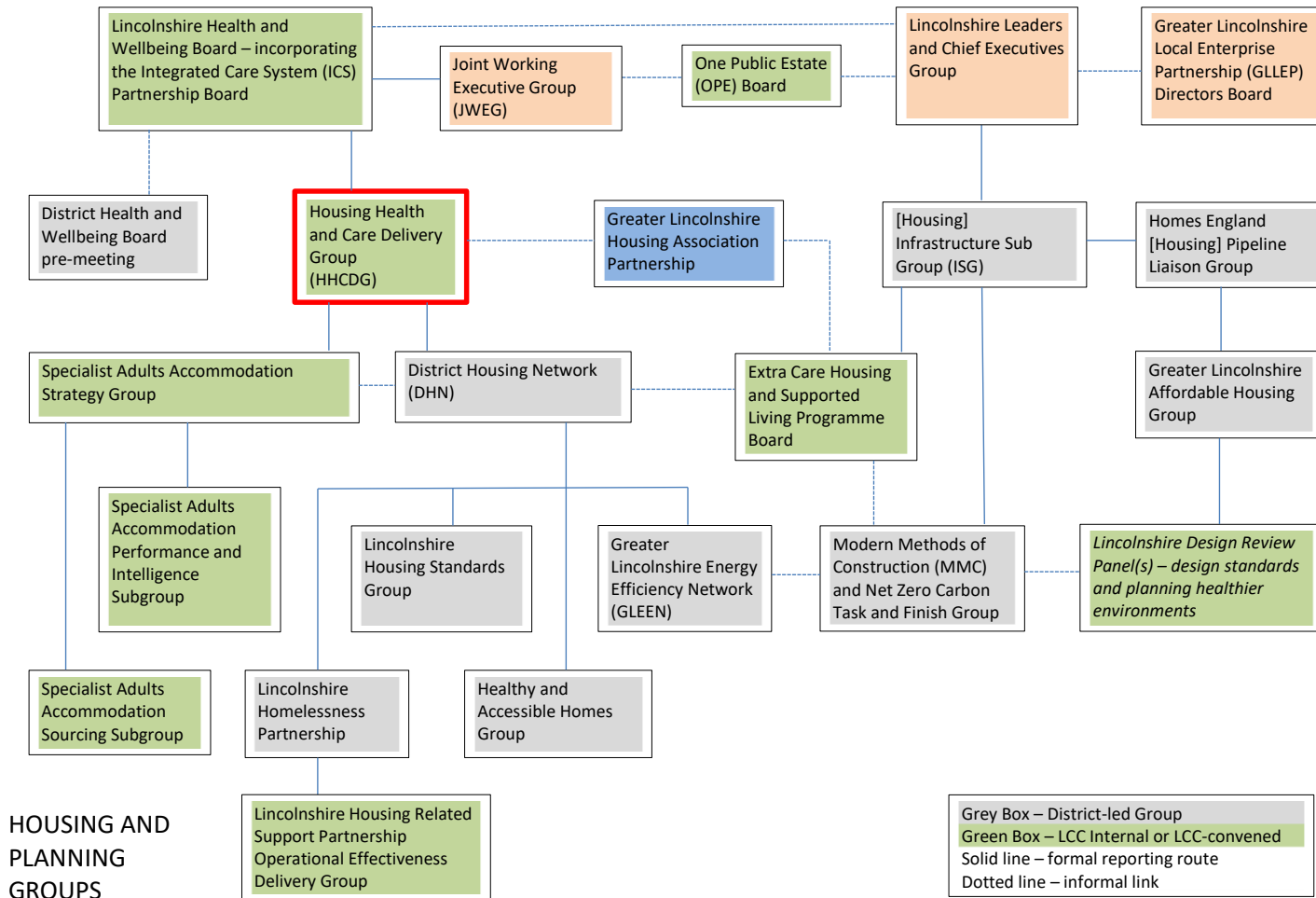


Taking forward the Good Home Inquiry – what councils, central government and other partners can do next

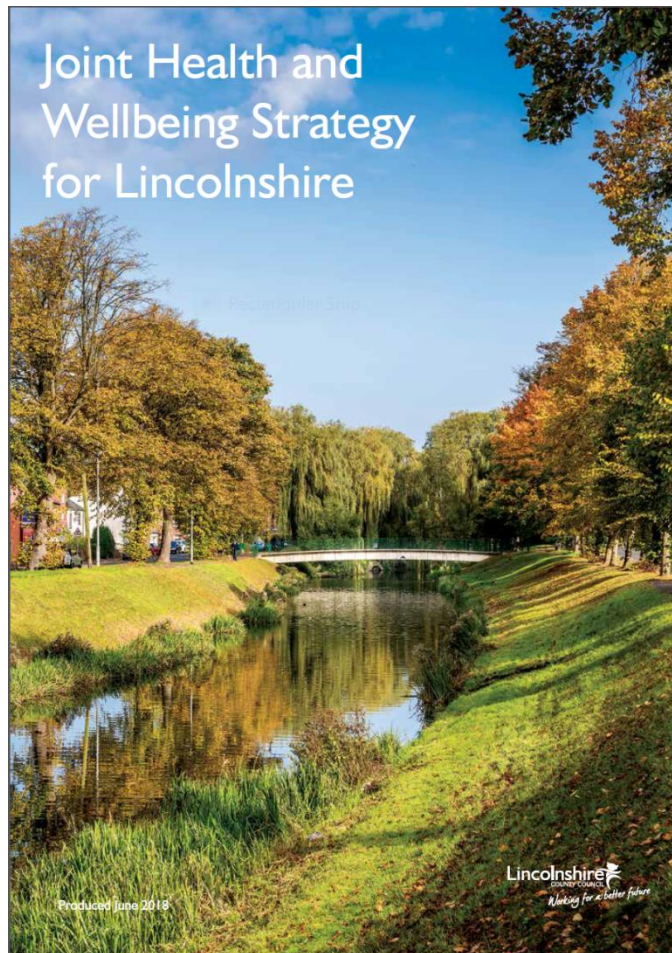
Lincolnshire's response

Sean Johnson, Public Health Programme Manager
Lincolnshire County Council
Email: sean.johnson@lincolnshire.gov.uk

Housing, Health and Care Delivery Group



Housing, Health and Wellbeing



- Joint Strategic Needs Assessment (JSNA)
 - Housing Standards and Unsuitable Homes
 - Insecure Homes and Homelessness
- Joint Health and Wellbeing Strategy
 - Housing and Health
 - Links to other priorities (e.g. carers, dementia and mental health)

Lincolnshire Homes for Independence

Blueprint	Focus	Objective	Links
<p>Our vision is for people to live independently, stay connected and have greater choice in where and how they live</p>	<p>Understanding needs and opportunities</p>	<p>Review evidence base and develop analysis</p>	<p>Population health management</p>
		<p>Make a case for investment in housing to reduce health and care costs</p>	<p>Define and map “services”</p>
		<p>Improve our understanding of housing conditions</p>	<p>Detailed mapping to target improvements and investment</p>
	<p>Housing for people with care and support needs</p>	<p>Improve services to extend people's housing choices in preparation for later life</p>	<p>Centre for Ageing Better commissioned stakeholder and user workshops and surveys</p>
	<p>Helping people remain in their current home</p>	<p>Develop a seamless, customer-friendly 'one-stop shop' to deliver cost effective services with the person at the centre</p>	<p>Good Home Inquiry recommendation to ensure the local provision of a Good Home Agency</p>
		<p>Make best use of new digital technologies to enable homes for life</p>	<p>Develop understanding of how digital enabled homes can support independent living</p>
	<p>Lincolnshire Homes for Independence Blueprint for the Housing Health and Care Delivery Group</p>	<p>Helping people find and move to a new, suitable home</p>	<p>Support more people with care and support needs to access social and private rented homes</p>

Good Homes Agency

Good Homes Agency Principle

Holistic Good Homes Agency service delivered in partnership, delivering and / or providing access to:

- Wellbeing Service
- Co-ordination of District Council services
- Home Improvement Agency Plus
- Design and support to deliver adaptations, repairs and improvements (for self-funders and people needing financial assistance)
- Support to access additional funding e.g. equity release
- Practical energy efficiency and green homes advice
- Safe and Well Checks, home safety and security

Regular communications and common customer relationship management

Occupational Therapy service with social care, community and hospital-based Therapists



Single Point of Contact / access to a Good Homes Agency service co-ordinating and supporting repairs, improvements, adaptations and equipment provision across housing tenures and providing housing options advice

Good Homes Agency referral to external organisations as appropriate retaining personal accountability for person

