



Office for
National Statistics

Understanding violent crime: overview and trends

Mark Bangs – Deputy head, ONS Crime Statistics

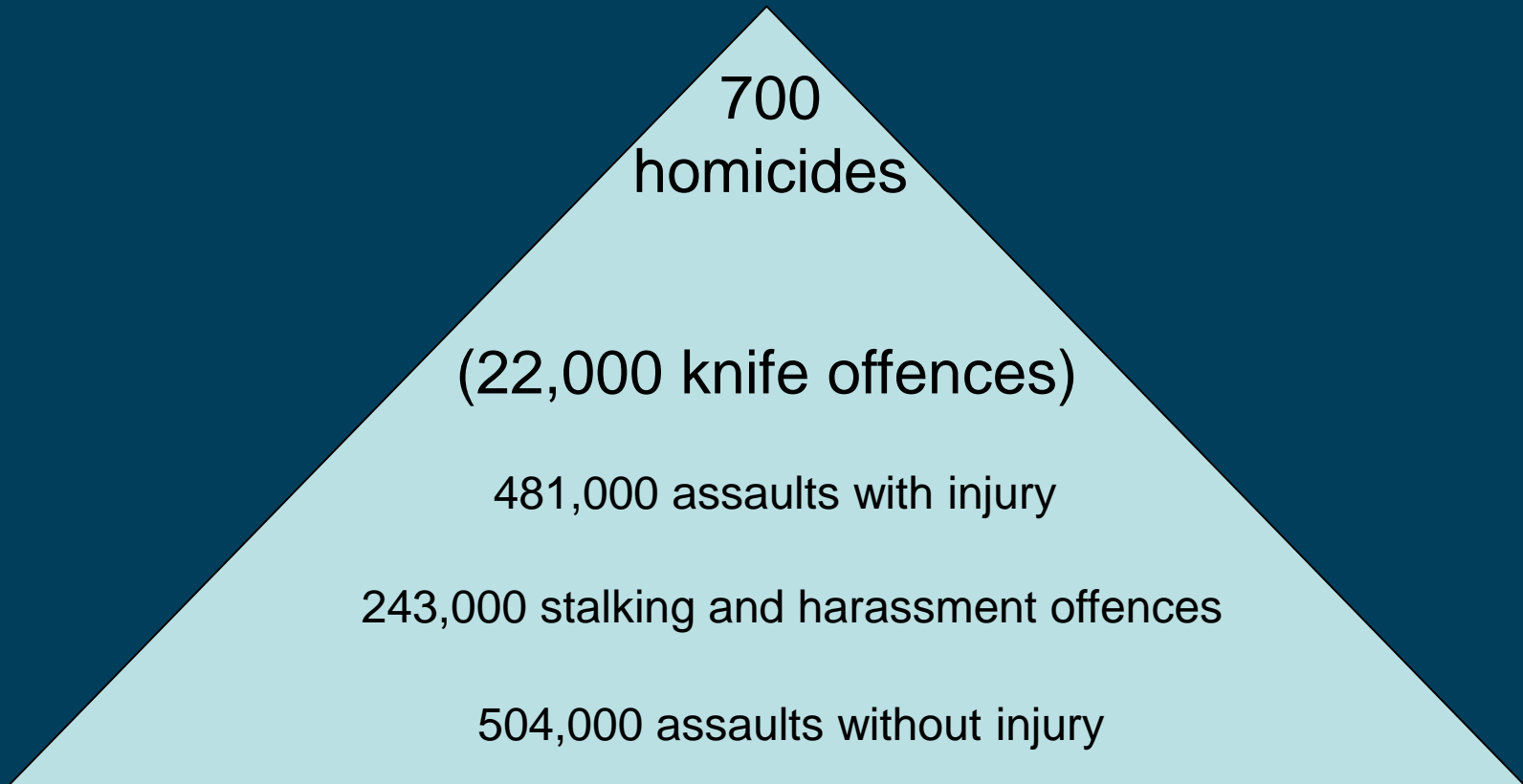
LGA Violent Crime Conference

15th November 2017

Overview

- Violent crime – long term trends
- Knife and gun crime – recent trends
- Patterns across England and Wales
- Implications

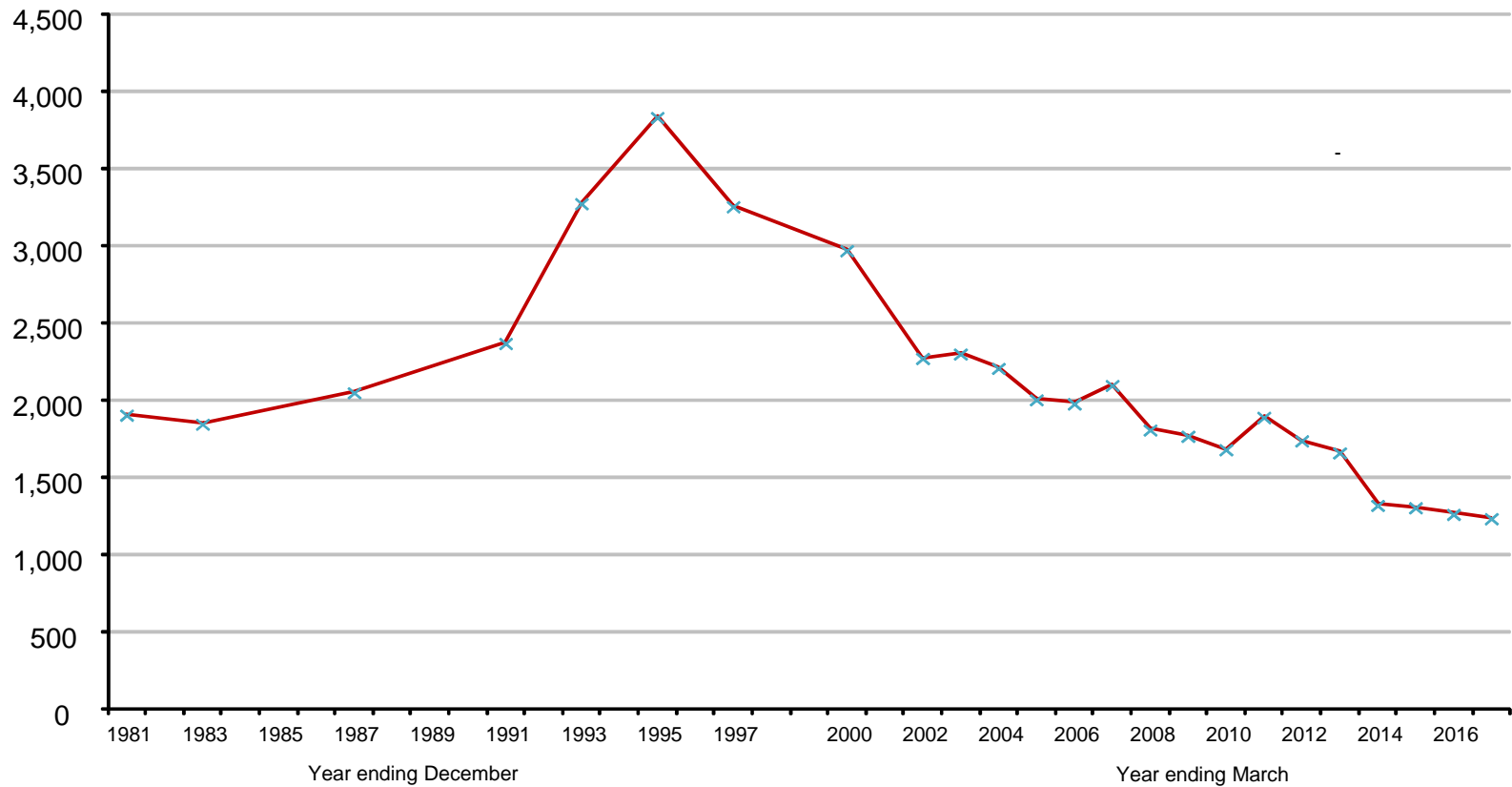
Violent crime covers wide spectrum



1.2 million Violence against the person offences were recorded by police in year ending June 2017

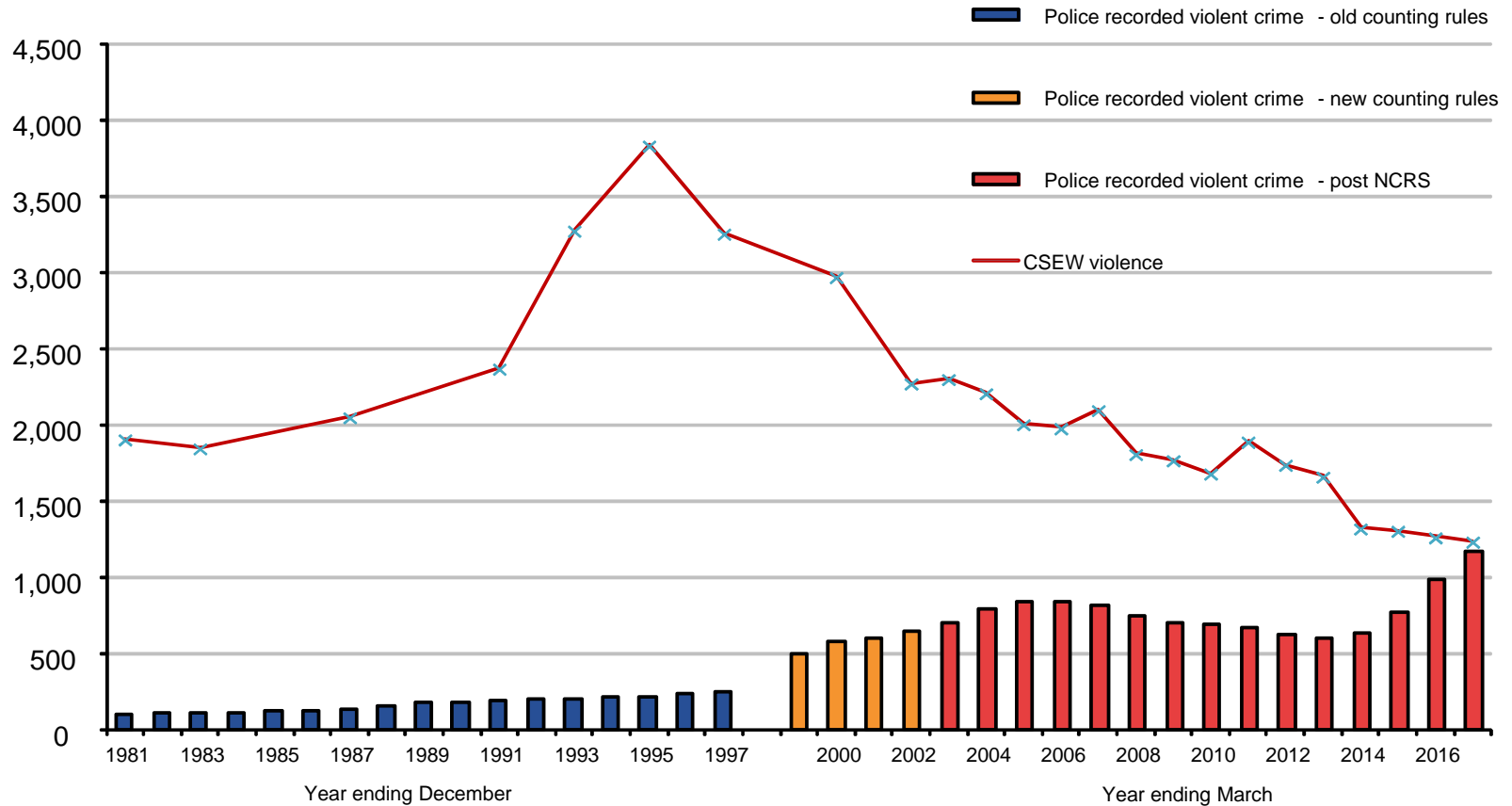
Trends in violent crime 1981 – 2017

Number of offences (thousands)



Trends in violent crime 1981 – 2017

Number of offences (thousands)





Violent crime recorded by police has jumped by a quarter, with huge rises seen in offences involving guns and knives, statistics reveal today.

Increases in serious violence



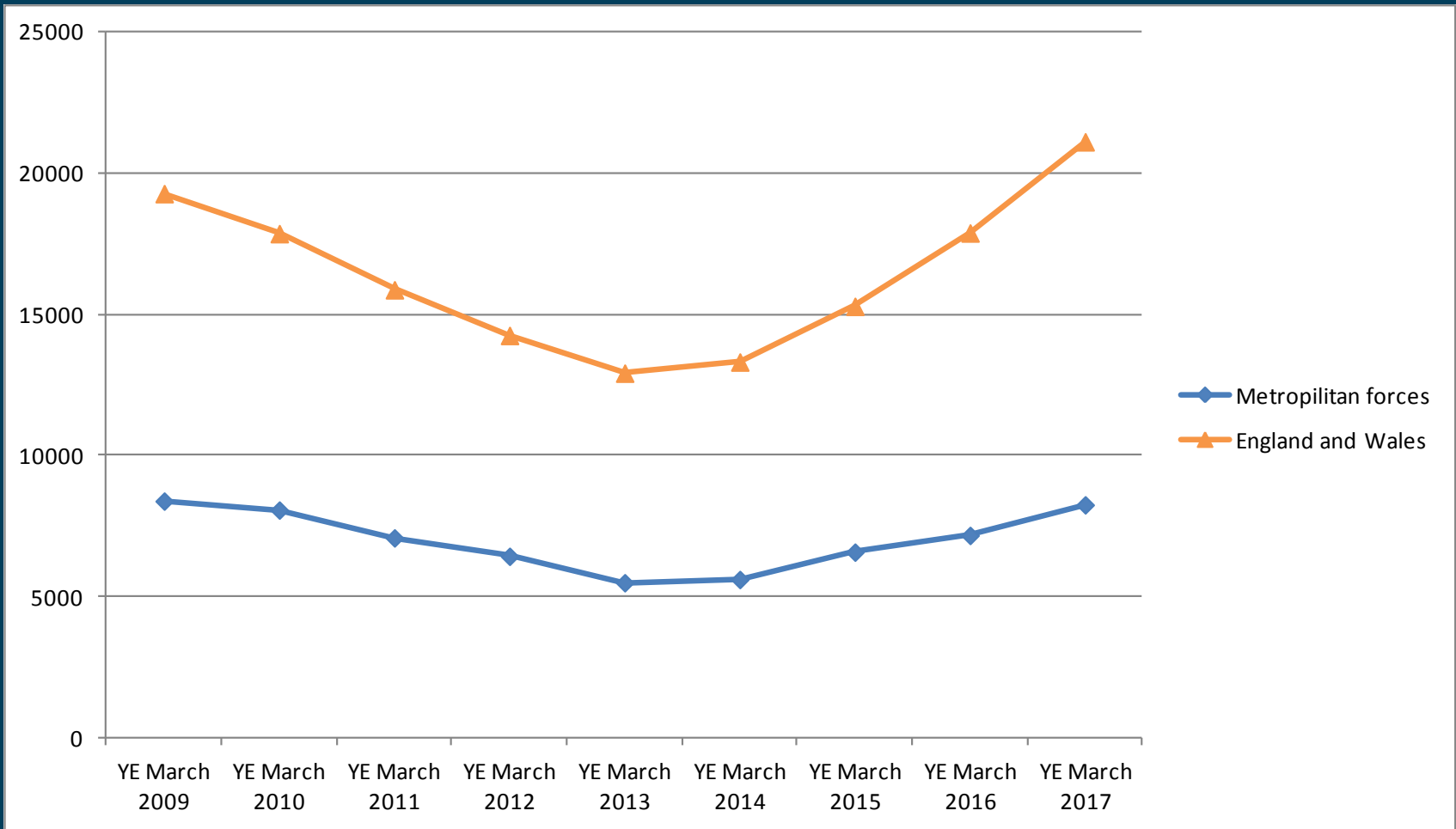
Offences involving a knife
– up by 26% in year
ending June 2017 (to
almost 40,000)



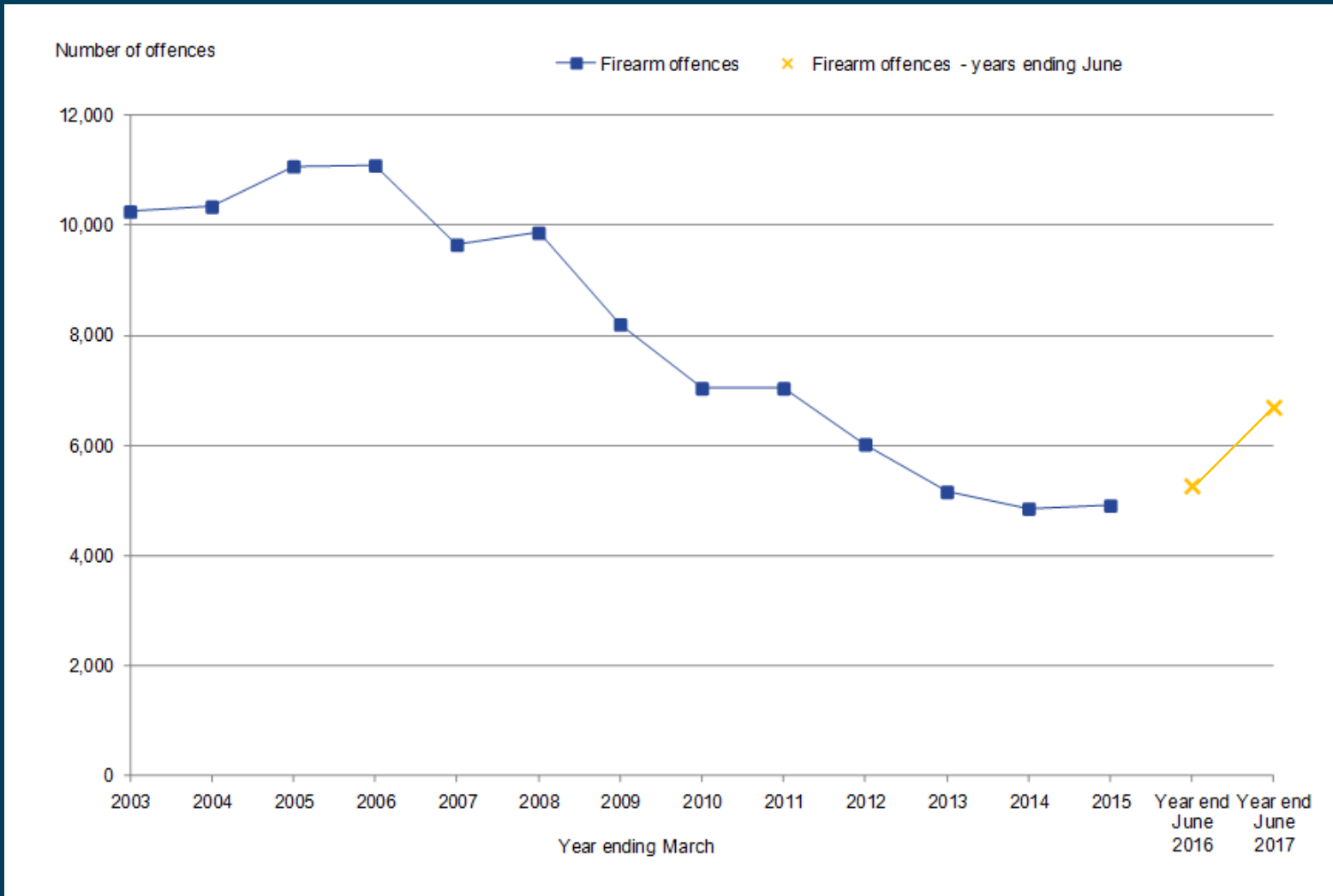
Offences involving guns
– up by 27% (to around
6,700)

Possession offences and hospital admissions also rising

Offences involving a knife 2009 - 2017



Offences involving firearms, 2003 - 2017

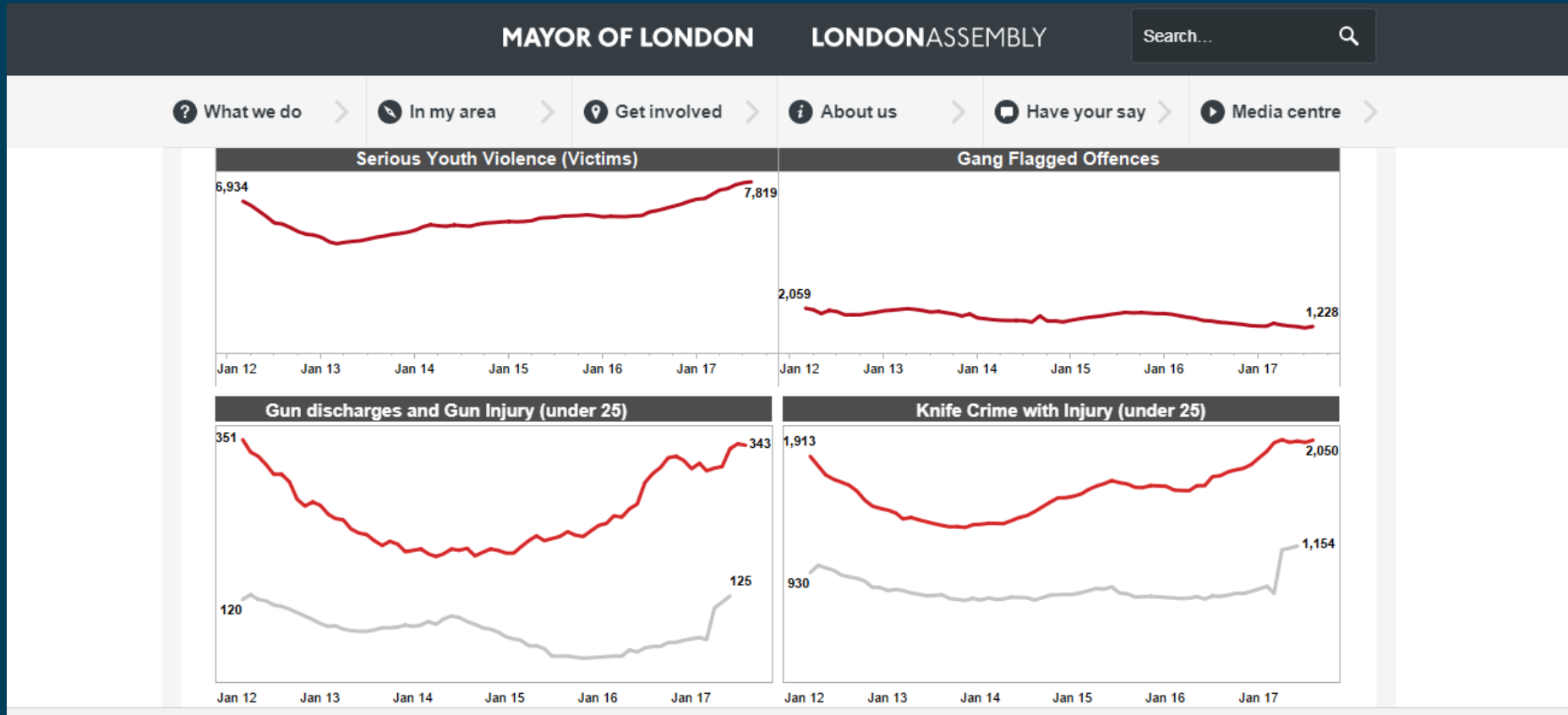


What is the nature of these offences?

- Crime survey provides a good general picture
 - Just over 1/3 of incidents are stranger violence
 - Most victims and offenders are young men
 - Alcohol is often a factor
 - Around half of incidents get reported to the police
- Developing a detailed picture is challenging.
- Continuously evolving picture – new methods and motivations.
- Local data and intelligence are key

Analysis of local intelligence

MOPAC – Gangs Dashboard



Implications and challenges for policing

- Complex crime problems to police
 - Serious crime – resource intensive
 - Offender s/ victims often presenting a complex set of needs
 - Victims may sometimes be offenders too?
 - Multiple interventions
- Implications of change in ‘crime profile’ for policing; are traditional crime prevention theories now less relevant and effective?

Summary

- We live in a less violent society compared with two decades ago.
- Violence crime as a whole has been falling, but substantial evidence that some types of more serious violence involving weapons have been rising.
- Increases have been focused in more urban police force areas, but not confined to these.
- There is more to do to understand the nature of these serious offences
- Serious and complex crimes likely to have implication for policing and community safety.