

Greater Manchester Collective Urgent Care Reporting Tool

What is it?

Nearly live report of A&E activity across the whole of Greater Manchester providing a system wide view of pressure and demand.

Retrospective view of activity with disaggregation from GM level to Locality, Neighborhood and GP Practice

Background

- Greater Manchester Devolution
- Sustainability and transformation plans
- Need for systems working together
- Future State of Digital and BI
- Need for change and innovation quickly
- Urgent Care Hub and systems approach

STP Power

- Collective governance.
- Change in traditional roles.
- Desire to change, requires innovation to achieve.
- Collaborative, not directive.
- Mutual benefit.
- Smarter decisions supported by evidence.
- Future potential.

Path to Urgent Care Reporting Tool

- Not the first
- First without external investment
- Keep it simple
- Pilot quickly, short planning
- Keep pilot inclusive
- Share output quickly
- Roll out organically (except EPR delays)
- Collaboration to improve

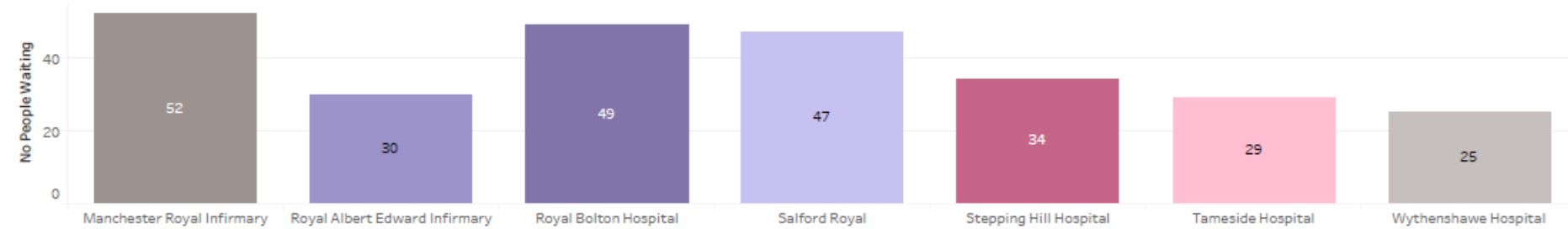
How it works

- Event driven
- Extracts mostly every 15mins from each provider via SFTP for past 24 hours
- GMHSCP data warehouse looks for files
- Merge process removes duplicates
- Live data connection through dataset view
- Tableau report on GM Tableau server.

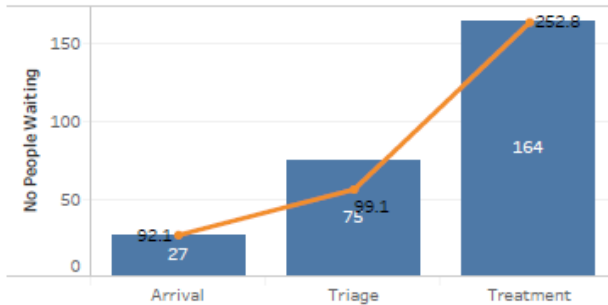
Tableau Report - Live

Current numbers waiting - Click on Site to filter items below

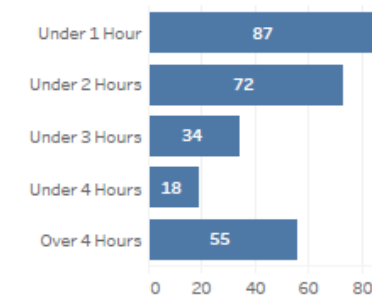
Last Updated: 23/02/2018 11:17:11



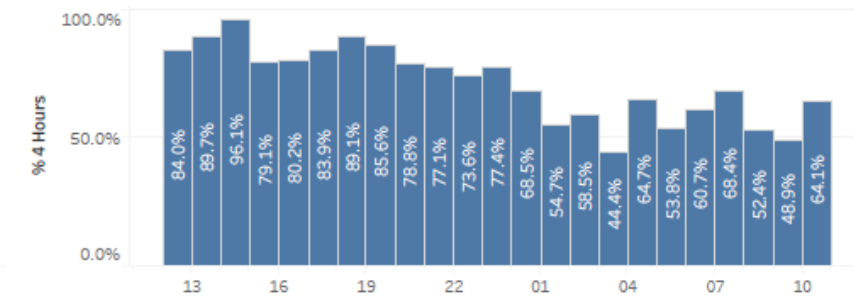
Waiters by Stage



Current Waiters by Wait Band



Last 24 Hours - 4 Hour Waited by Hour



Discharged today performance

No Admitted	103.0
No Discharged	383.0
No Admitted or Discharged	486.0
% 4 Hours	58.0%
No Four Hour Breaches	204.0

Today's Arrivals by Hour

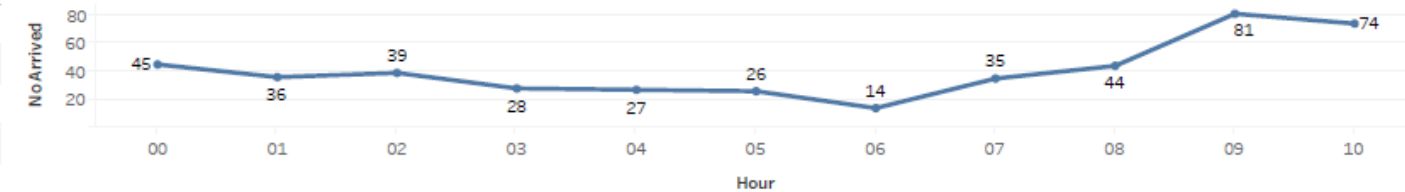
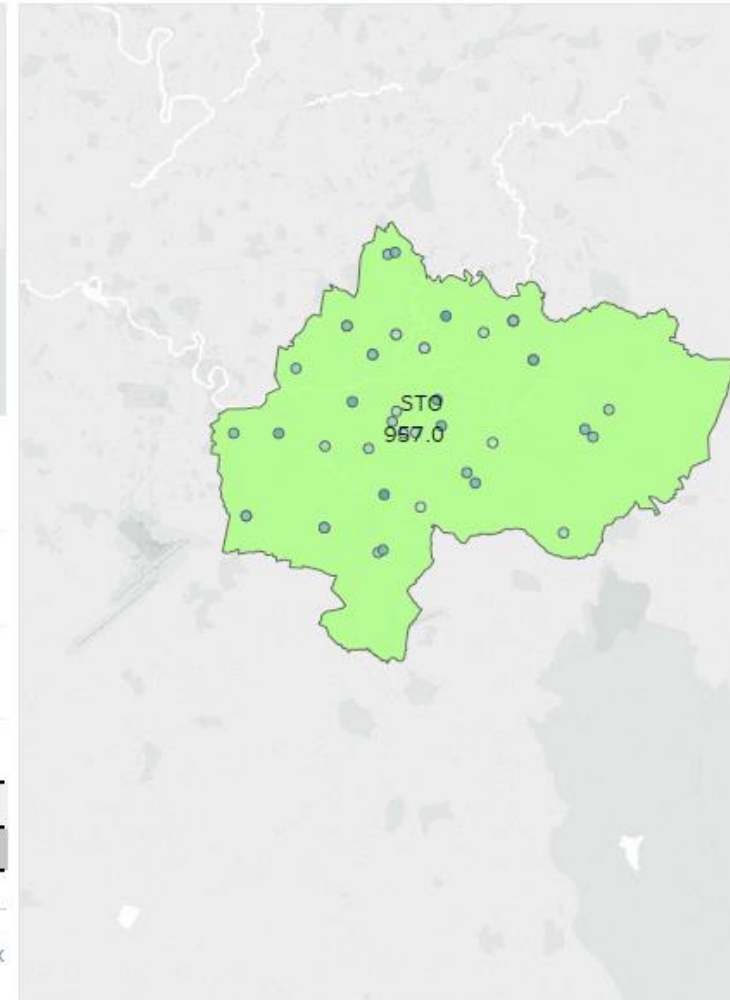
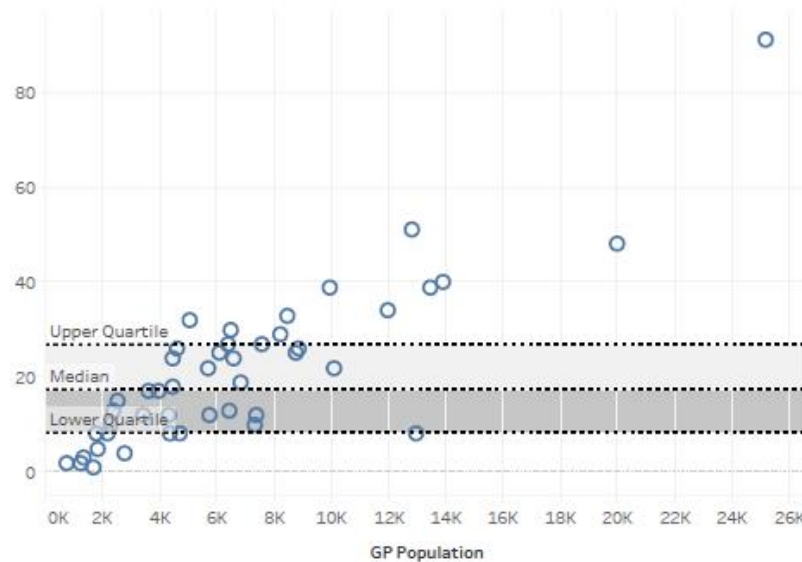
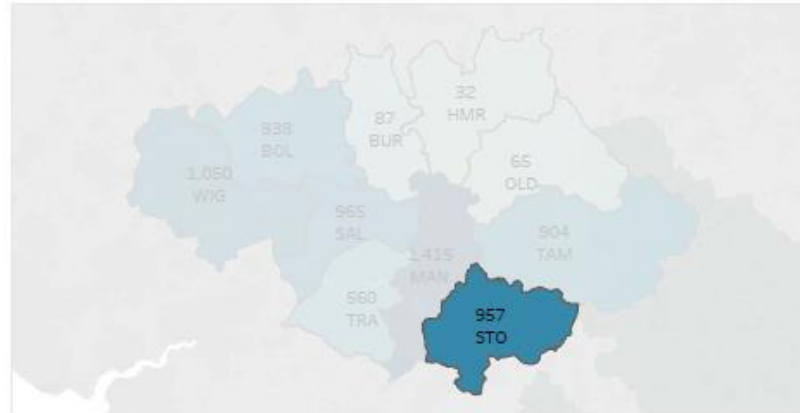


Tableau Report Retrospective

Hour and Day of arrival view for No of Attendances for last 6 weeks

	Monday	Tuesday	Wednesday	Thursday	Friday	Saturday	Sunday
0	255.0	245.0	252.0	257.0	268.0	243.0	253.0
1	201.0	201.0	179.0	194.0	196.0	221.0	223.0
2	188.0	158.0	136.0	168.0	178.0	187.0	198.0
3	149.0	147.0	152.0	126.0	133.0	176.0	190.0
4	158.0	150.0	155.0	143.0	144.0	158.0	145.0
5	135.0	156.0	160.0	157.0	134.0	149.0	154.0
6	139.0	148.0	129.0	107.0	125.0	131.0	113.0
7	190.0	170.0	170.0	178.0	165.0	151.0	156.0
8	327.0	290.0	297.0	278.0	247.0	225.0	239.0
9	634.0	554.0	553.0	545.0	440.0	312.0	348.0
10	736.0	677.0	609.0	637.0	517.0	388.0	422.0
11	787.0	757.0	622.0	682.0	563.0	473.0	518.0
12	781.0	608.0	662.0	652.0	520.0	458.0	532.0
13	686.0	629.0	612.0	621.0	485.0	485.0	534.0
14	692.0	616.0	617.0	611.0	508.0	510.0	506.0
15	664.0	623.0	568.0	563.0	483.0	490.0	498.0
16	715.0	605.0	626.0	671.0	565.0	489.0	505.0
17	703.0	660.0	579.0	630.0	557.0	452.0	468.0
18	685.0	593.0	625.0	633.0	486.0	467.0	444.0
19	655.0	590.0	602.0	619.0	496.0	419.0	457.0
20	581.0	544.0	550.0	573.0	443.0	409.0	456.0
21	490.0	476.0	439.0	471.0	379.0	370.0	449.0
22	414.0	395.0	363.0	390.0	369.0	292.0	360.0
23	284.0	334.0	327.0	292.0	258.0	301.0	313.0

Tableau Report Retrospective



Future Options & Opportunities

Aim - Useful tool for urgent care hub, providers, commissioners and devo team.

- Review process and consistency
- Expand dataset
- How best to share back to trusts?
- Do we want a public facing report?
- Machine Learning