

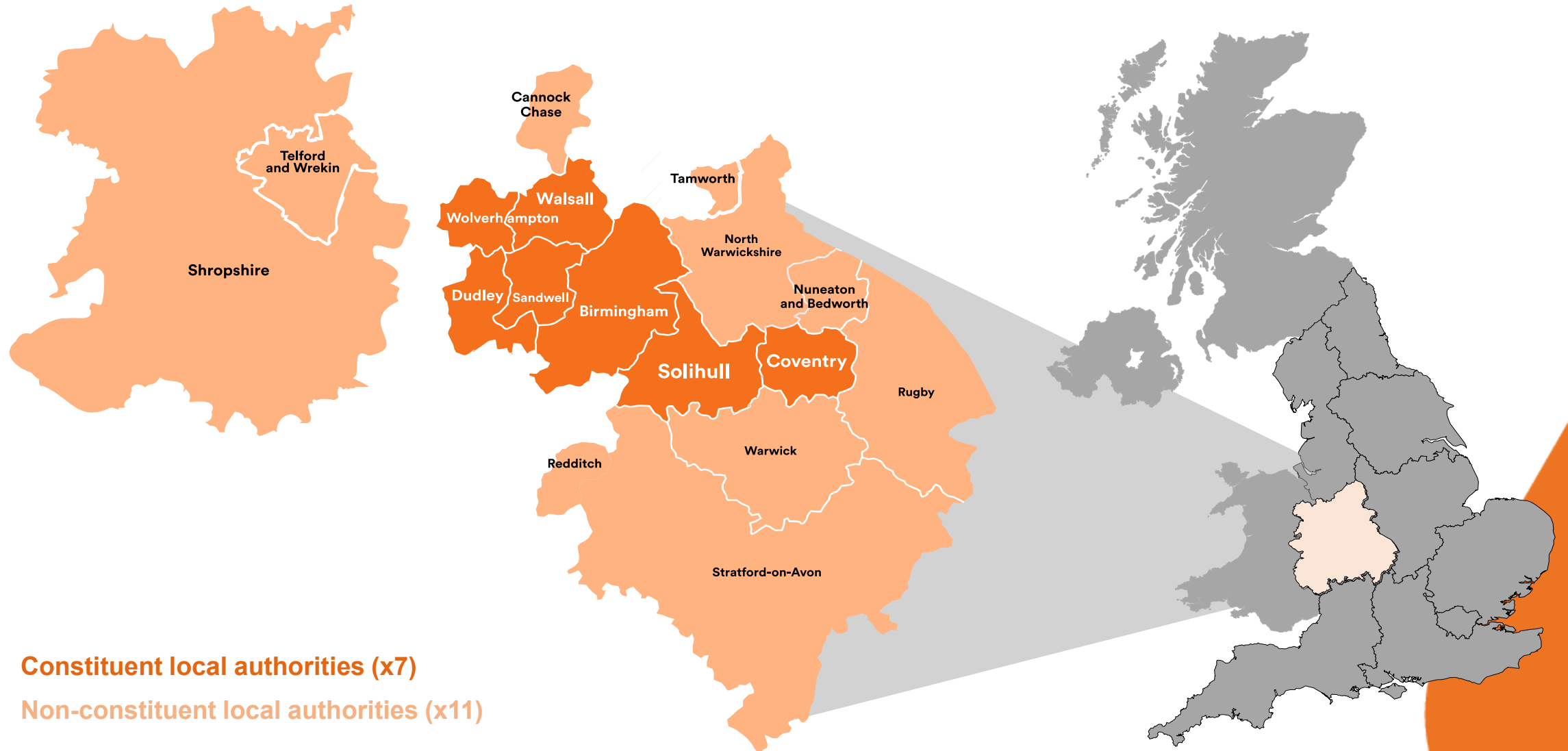
Local Government Association Webinar

15 November 2025

Key messages

1. Functional ties and **purposeful** partnerships between places.
2. Shared, jointly developed regional **vision and strategic priorities** that set the framework for partnership working.
3. Clarity of **partners' priorities** for their places.
4. Leveraging the strength of local-regional-national joint working; and being clear about '**who does what**' and how funding flows into delivery.
5. Political and senior officer **governance** that works for the partnership – its purpose and the parties to it – with the right underlying support.

Context



Context



HM Treasury WEST MIDLANDS
COMBINED AUTHORITY

WEST MIDLANDS
COMBINED
AUTHORITY
DEVOLUTION
AGREEMENT


2015




HM Treasury WEST MIDLANDS
COMBINED AUTHORITY

WEST MIDLANDS COMBINED
AUTHORITY
A SECOND DEVOLUTION DEAL
TO PROMOTE GROWTH

2017



HM Government




West Midlands
Combined Authority

**West Midlands
Combined Authority
Trailblazer deeper
devolution deal**

Subject to ratification of the deal by all partners and the statutory requirements referred to within this document, including public consultation, the consent of the West Midlands Combined Authority and its constituent local authorities, parliamentary approval of the secondary legislation implementing the provisions of this deal, and accompanying accountability arrangements.

2023

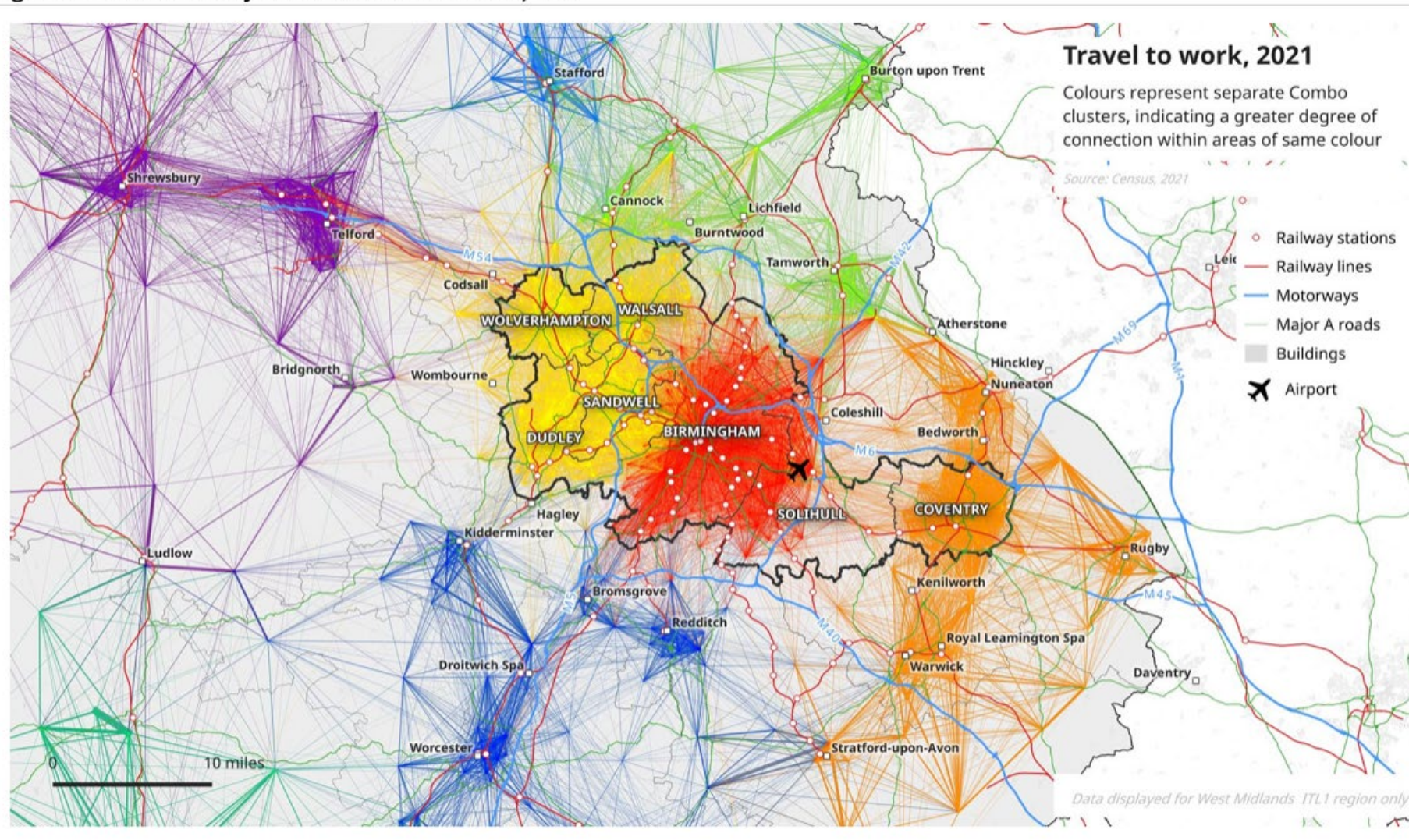


HM Treasury

Memorandum of
Understanding for the Single
Settlements with Greater
Manchester and West
Midlands Combined
Authorities

2023

Figure 2-4: COMBO Analysis of Travel to Work Data, 2021

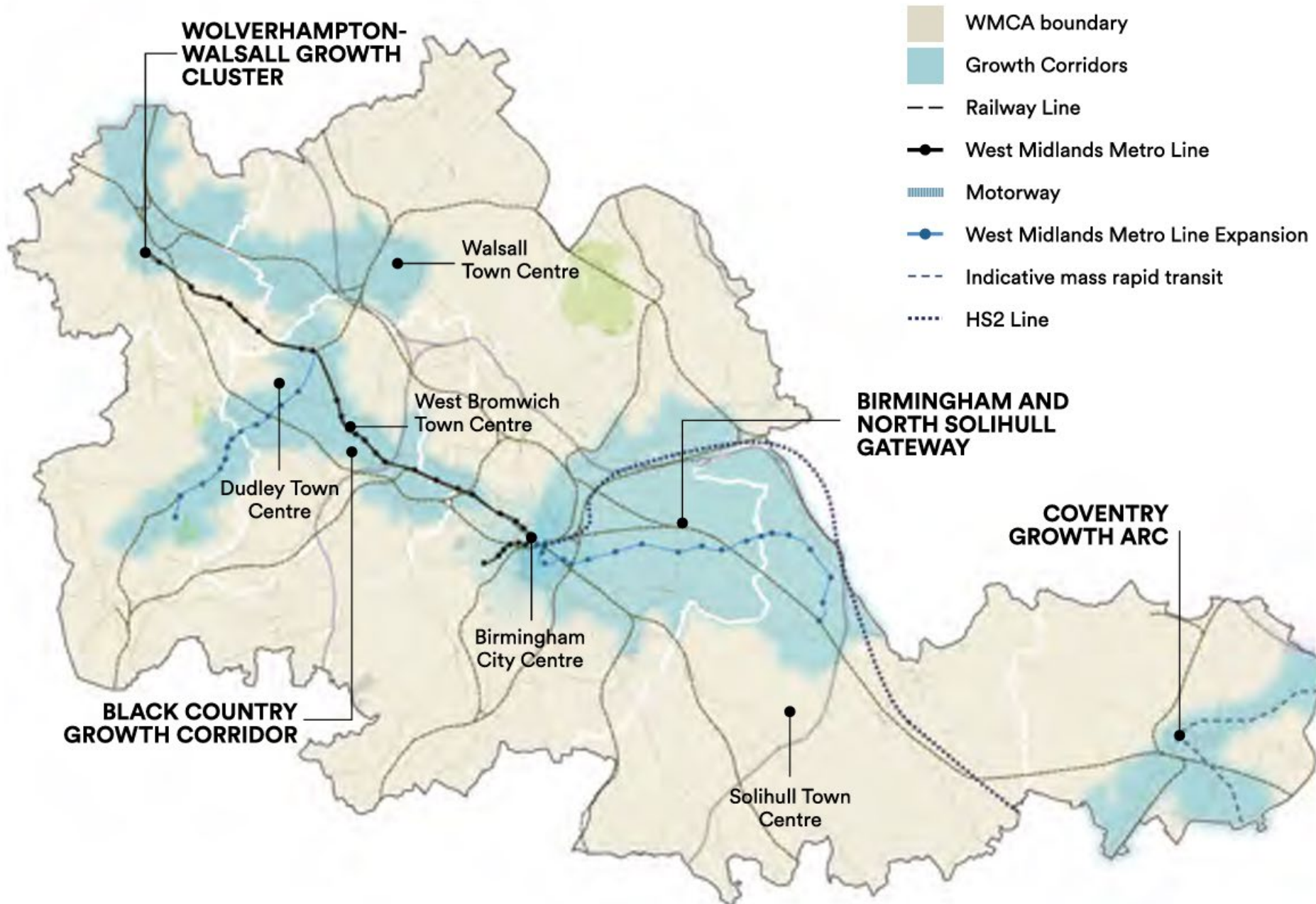


1. Functional ties and purposeful partnerships between places.

**2. Shared,
jointly
developed
regional vision
and strategic
priorities that
sets the
framework for
partnership
working.**



Launch of the West Midlands Growth Plan (2025)

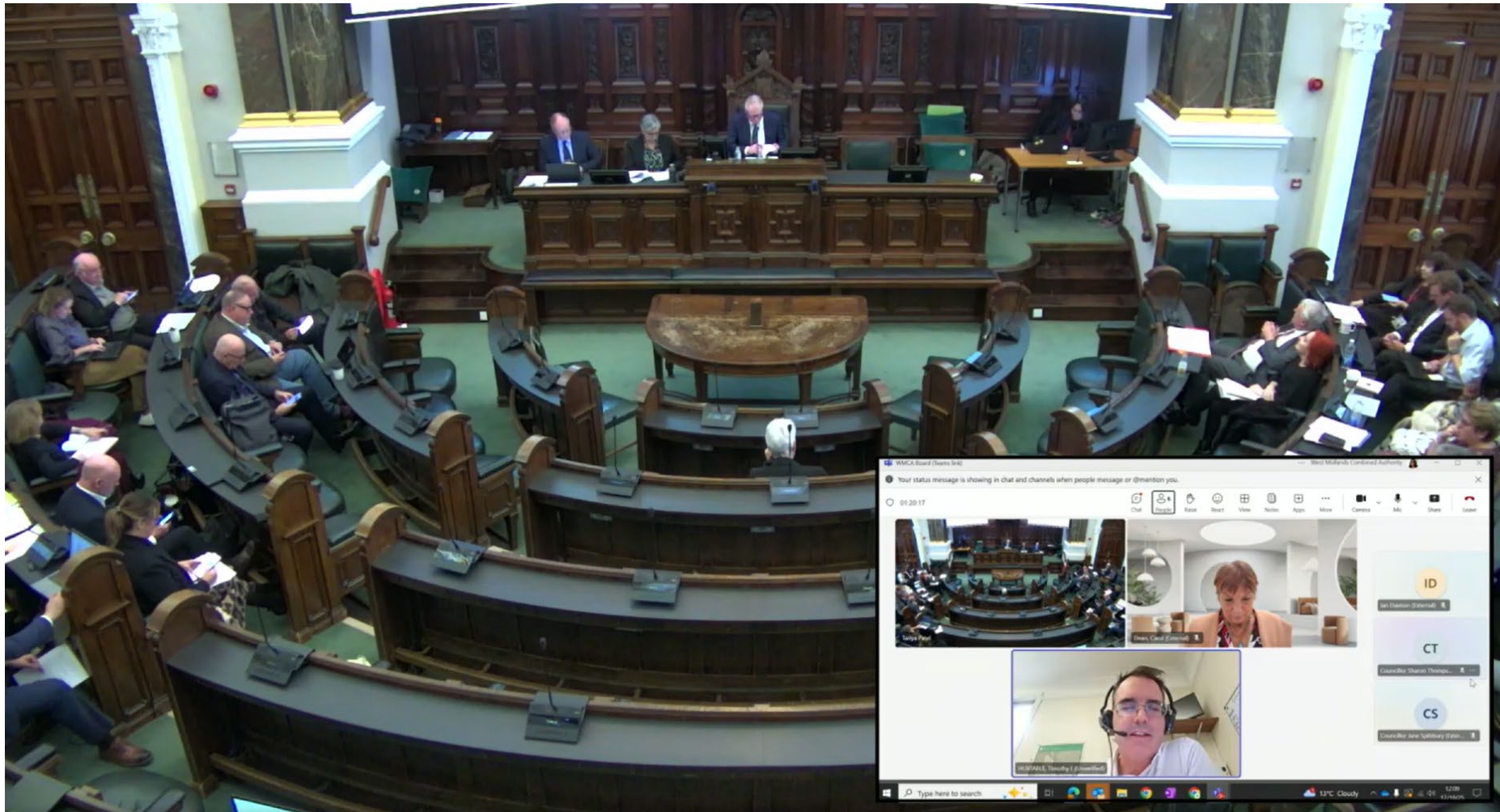


3. Clarity of partners' priorities for their places.



Launch of West Midlands Works (2025)

4. Leveraging the strength of local-regional-national joint working; and being clear about ‘who does what’ and how funding flows into delivery.



WMCA Board, 17 October (2025)

5. Political and senior officer governance that works for the partnership – its purpose and the parties to it – with the right underlying support.



**West Midlands
Combined Authority**