

Gill Tyler

DCO – Designated Clinical Officer
NHS Vale Royal CCG



Sophie

Acronyms

EHCP

DCO

CCG




CYP

CETR

A&E

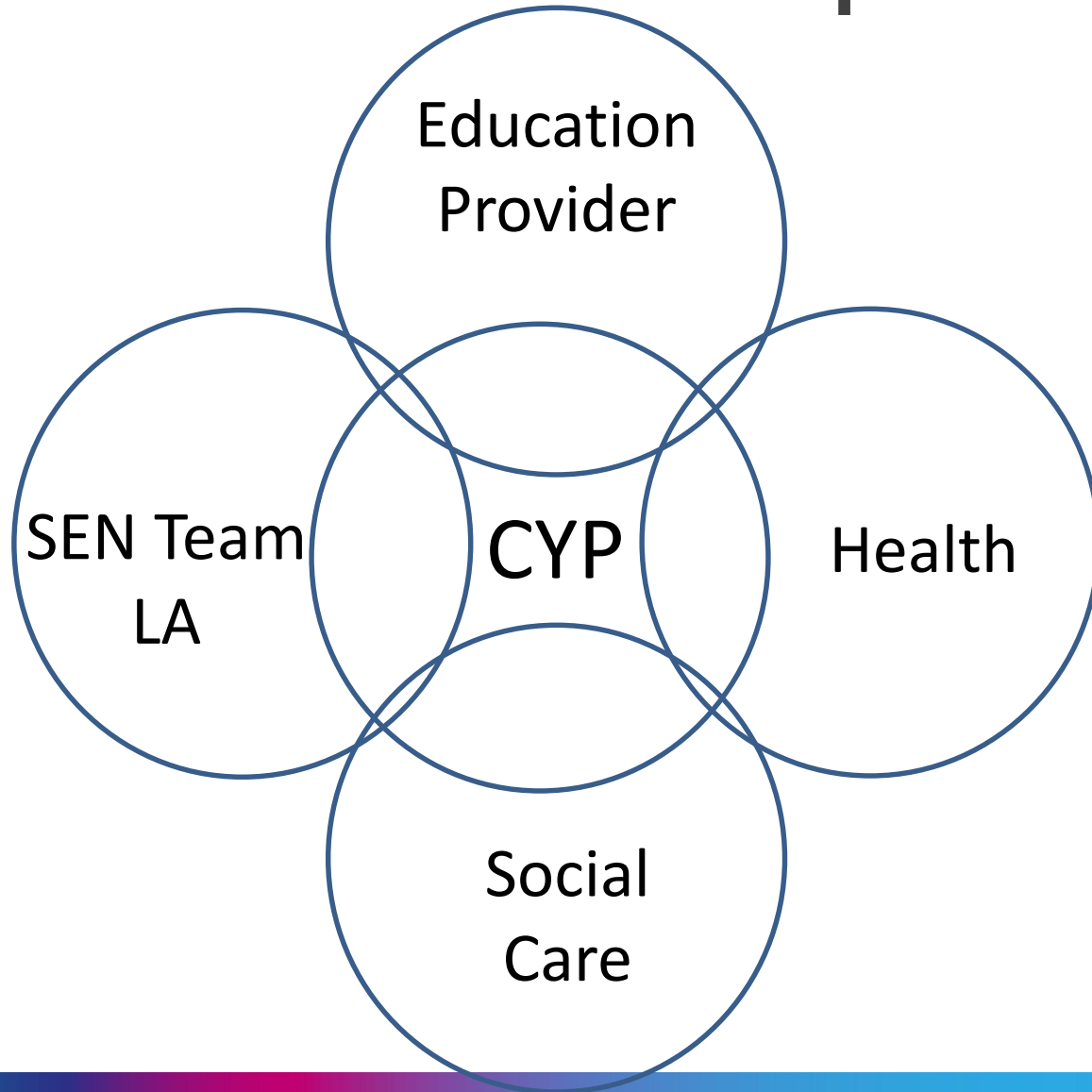
National Drivers

- SEND → EHCP
 - Transforming Care – CTR/CETR
 - Transformation Plan
 - LAC – health outcomes
 - Multi-resource Panel
 - NICE guidelines on transition
- 

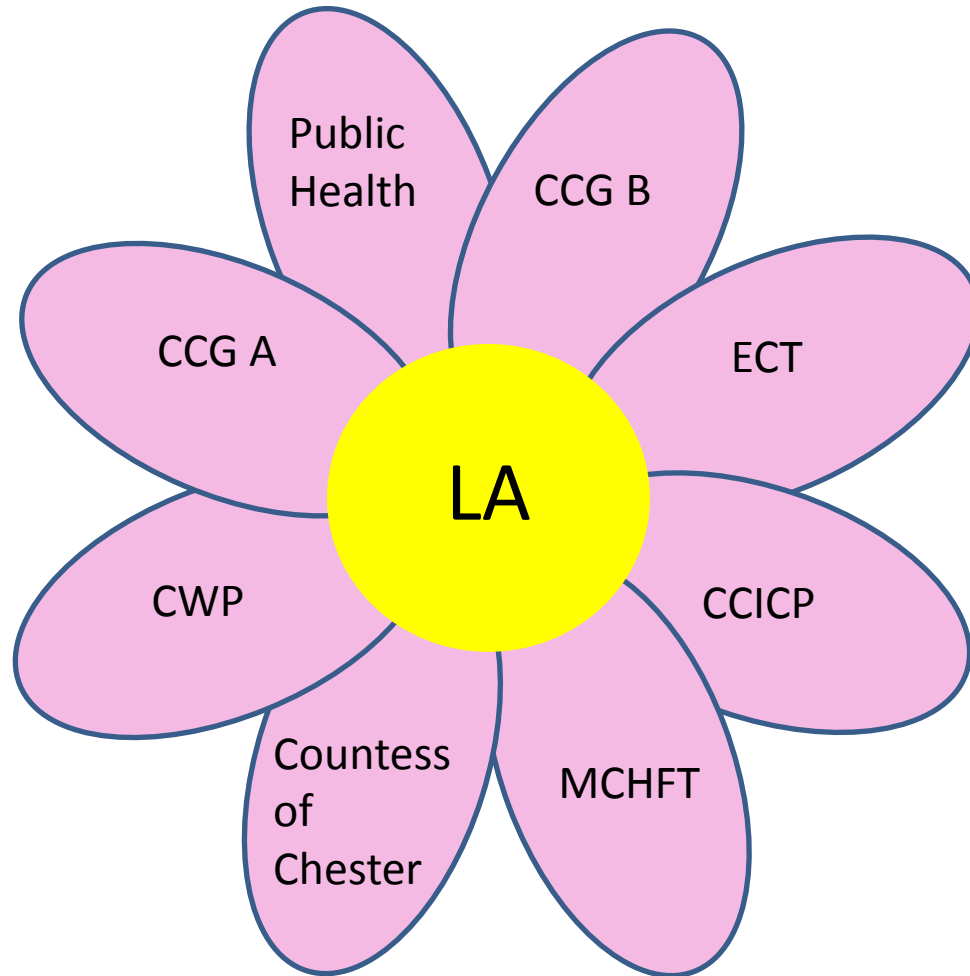
ETHOS

- All CYP to do well = better outcomes.
- Support CYP and their families.
- Get Education, Health and Social Care services working together.
- Give CYP one plan which can run from 0 - 25.

The Landscape



Health



Must Do's

- LA's have to find out which CYP in their area might have SEND
 - Proactive duty
- Health must inform parents
 - Signpost
 - LA
- Local Offer
- Joint commissioning
- Personal budgets


Change : Opportunity

- DMO or DCO
- Operational
- Strategic

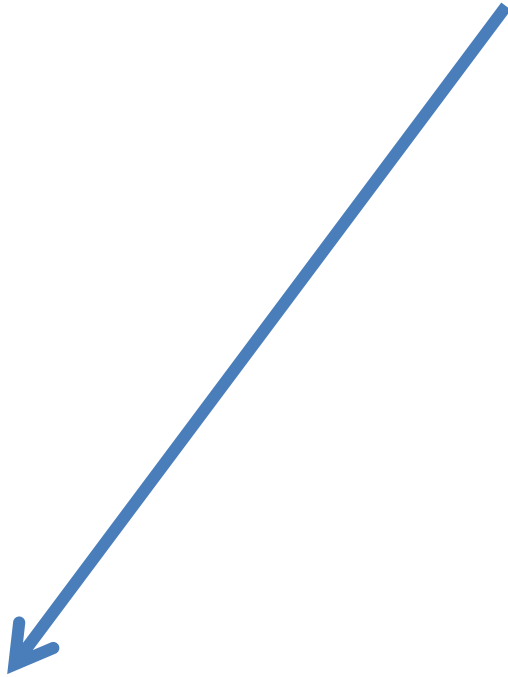
Operational

- Process for EHCP's
- Annual Reviews
- SENCO termly meetings
- Youth justice service
- Meeting medical needs

Strategic

- Send strategy
 - Local Offer
 - Workforce development
 - SEND Audit
 - SEND health providers meeting
 - Mediation contract review
- 

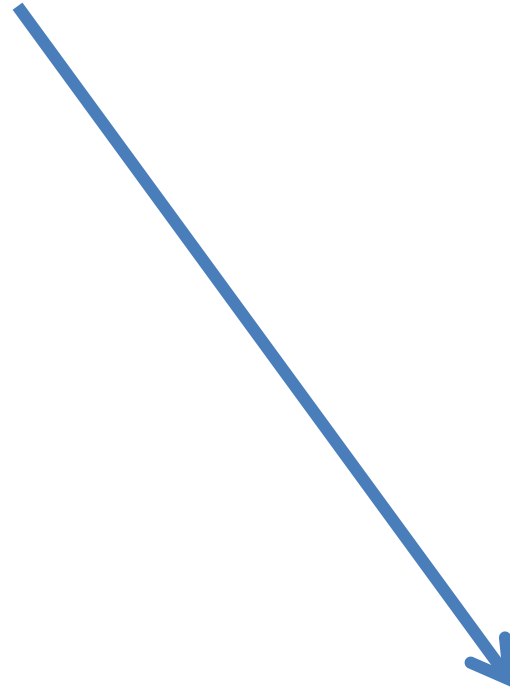
Sophie



College



Personal
Care



Social



Learning

- Change : Opportunities
- Separate processes → one escalation
- SEN Lead + DCO

Governing Body

SEND embedded in Chief Nurse report to GB

AD for Commissioning

Director of nursing

Woman and Children's Programme Board

SEND an agenda item

Quality and Safeguarding Committee

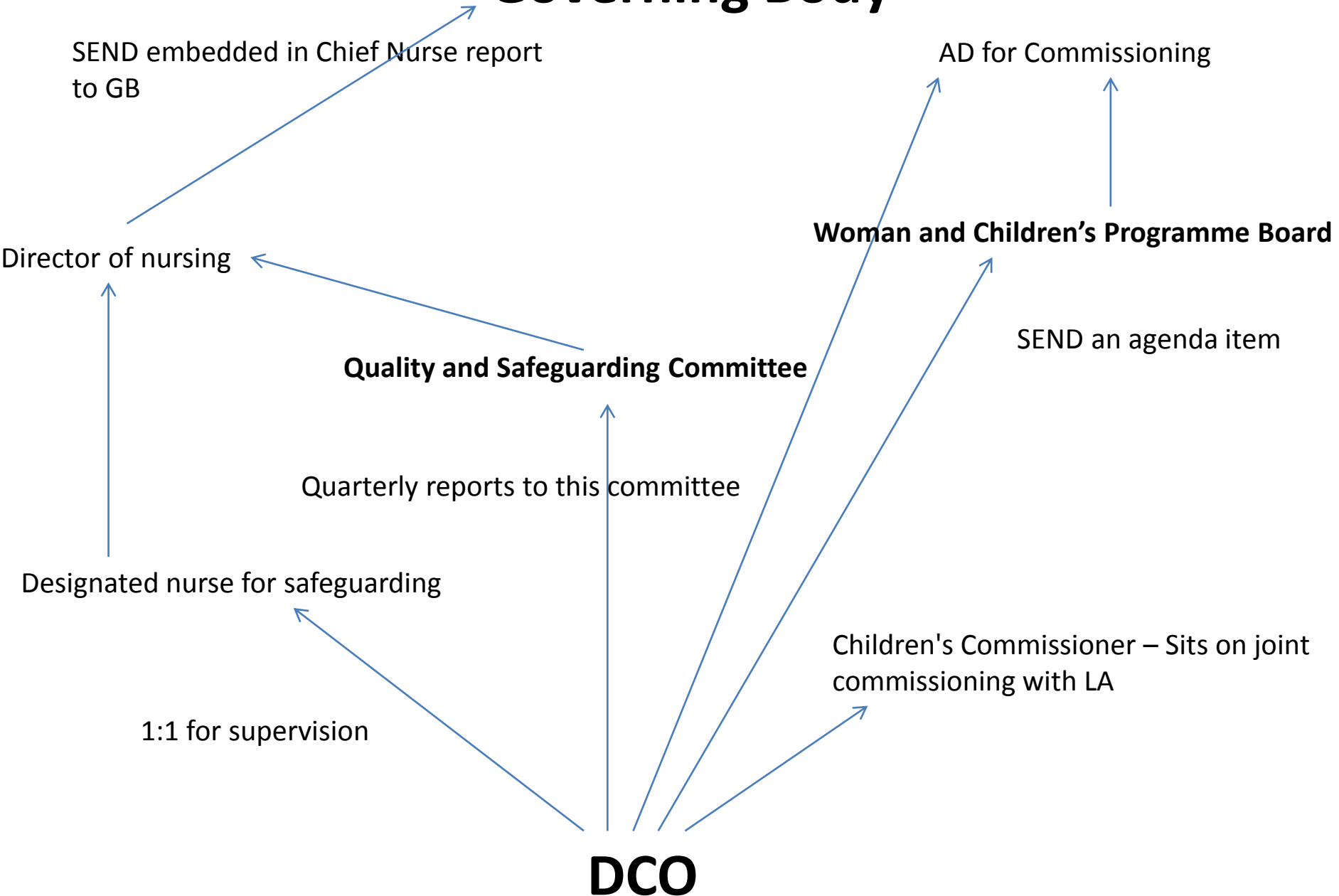
Quarterly reports to this committee

Designated nurse for safeguarding

Children's Commissioner – Sits on joint commissioning with LA

1:1 for supervision

DCO



Health and
Wellbeing
Board

West Cheshire
Children's Trust

SEND Strategy Group

Woman and Children's Programme Board
/ Quality and Performance Committee

SEND Joint Commissioning Group

SEND Health Providers Group

Meet Charlie



Challenge

- To do things differently
- Professional challenge

→ Internal

→ External

- Co-production

Why? → Better outcomes for our CYP.

