



Here, There and Everywhere:
How Can Councils Support Music Tourism?
 LGA x UK Music Session 26/012/24



Overview of case study



UK Local Authority Pilot: Update



Next Steps & Recommendations

Overview

VISION 2025
Outdoor Events · Climate · Action

attitude
is everything

CHELTENHAM
Festivals

Advisory networks:
Cheltenham Culture Board
Economic Advisory Group
Sustainability Sub-Group

Local Stakeholders:

**CHELT
ZERO**

S
National Star


CHELTENHAM
BOROUGH COUNCIL

The DATE toolkit combines national community driven accessibility and sustainability standards into an assessment and advisory toolkit.

This has been made possible by the highly networked events research and practice ecosystem in Gloucestershire


**UNIVERSITY OF
GLOUCESTERSHIRE**



- Action
- Research
- Innovation
- Inclusion

Overview

CHELTENHAM Festivals



CHELTENHAM
BOROUGH COUNCIL



**UNIVERSITY OF
GLOUCESTERSHIRE**

Overview

DATE is a simple toolkit that works within the events commissioning process to deliver:

- An assessment of an event's accessibility and sustainability profile
- Information for events' group/SAG/staff
- Support for the event organizers
- Aggregated data for analysis

The tool has been purposely designed to be:

- Accessible to all
- Easily integrated into any LA context
- Accurate, inexpensive and adaptable

EVENT DETAILS

Please complete all the questions below before moving to the Accessibility tab

What is the name of the event being assessed?

What type of event is being assessed?

Where is the event to be held?

Capacity

Name of Event Organizer

Proposed date(s)

Number of days

List anyone else who will be responsible for implementing/delivering the event

Please provide a summary of your event proposal

SUSTAINABILITY

1. Governance Need Help? Does your event relate to any of the following?

a. Is there a person assigned with responsibility to lead on sustainable delivery?

b. Do you have a net zero emissions strategy and/or action plan to place to reduce impact?

c. Do you plan to record and/or report CO2 emissions for your event?

2. Energy Need Help? Does your event relate to any of the following?

Consider your event plan against the Powerful Thinking energy hierarchy

a. Do you have an energy plan in place for your event?

b. What will be the main power source for your event?

c. Do you plan to record and/or report energy use?

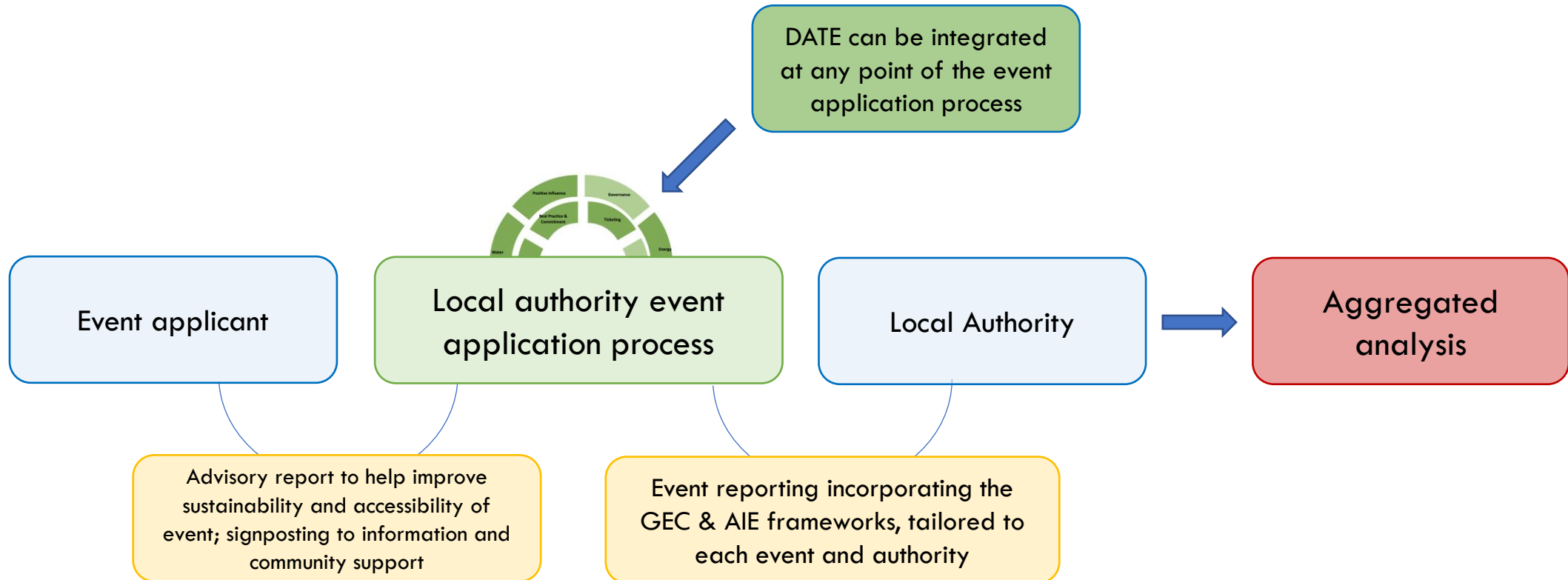
3. Travel & Transportation Need Help? Does your event relate to any of the following?



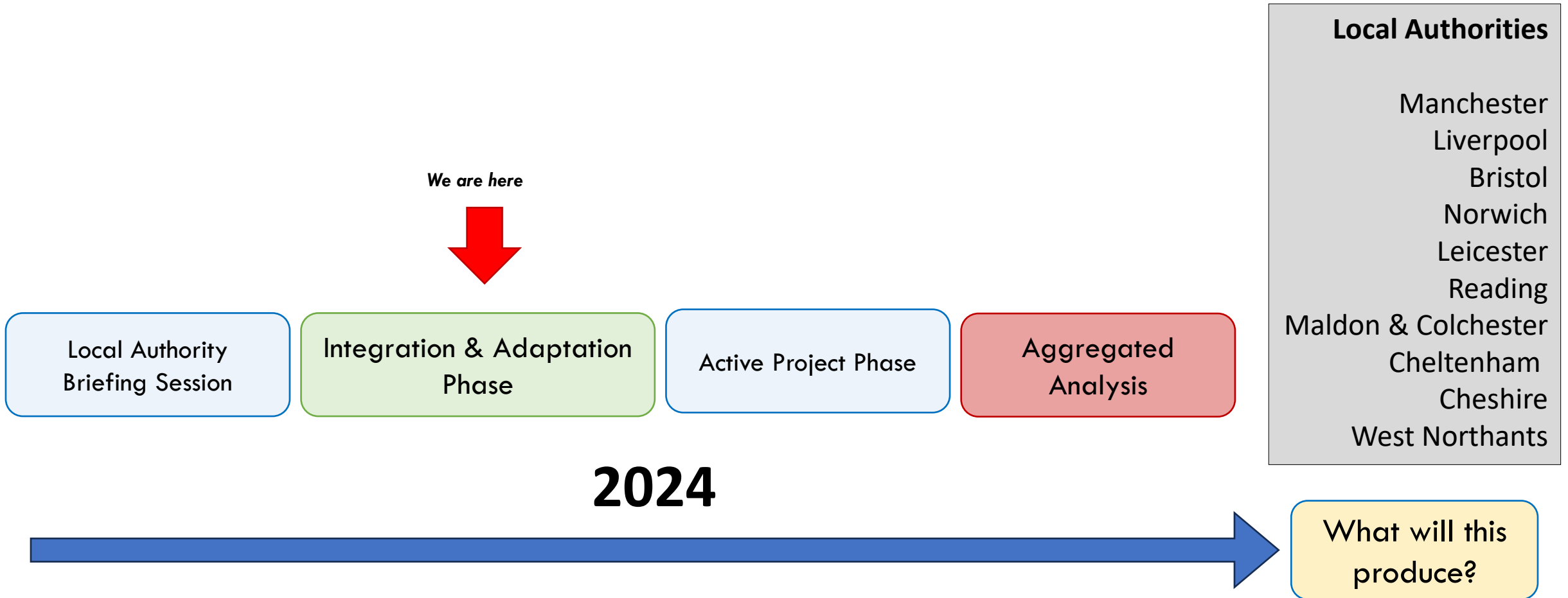
ACCESSIBILITY	Action	Information
Ticketing	Review	Click here for useful information on improving your ticketing
Getting to Event or Venue	No action required	
Environment (Services)	No action required	
Environment (Physical Access)	No action required	
Access to Performance	No action required	
Best Practice & Commitment	No action required	
SUSTAINABILITY	Action	Information
Governance	No action required	
Energy	Review	Click here for useful information on improving your energy usage
Travel & Transport	No action required	
Food & Drink	No action required	
Material & Waste	No action required	
Water	Review	Click here for useful information on how to improve your water usage
Positive Influence	No action required	

DATE takes the form of a three-page survey that produces everything needed to assess an events profile against the Green Events Code, as well as providing additional accessibility and social value outputs for local authorities.

Overview



UK Local Authority Pilot: Update



UK Local Authority Pilot: Update

Coordinated analysis

These are the key datasets as identified by local authorities:

DATASET 1

Event profiles: individuals
Event advisories: community
Benchmarking: national

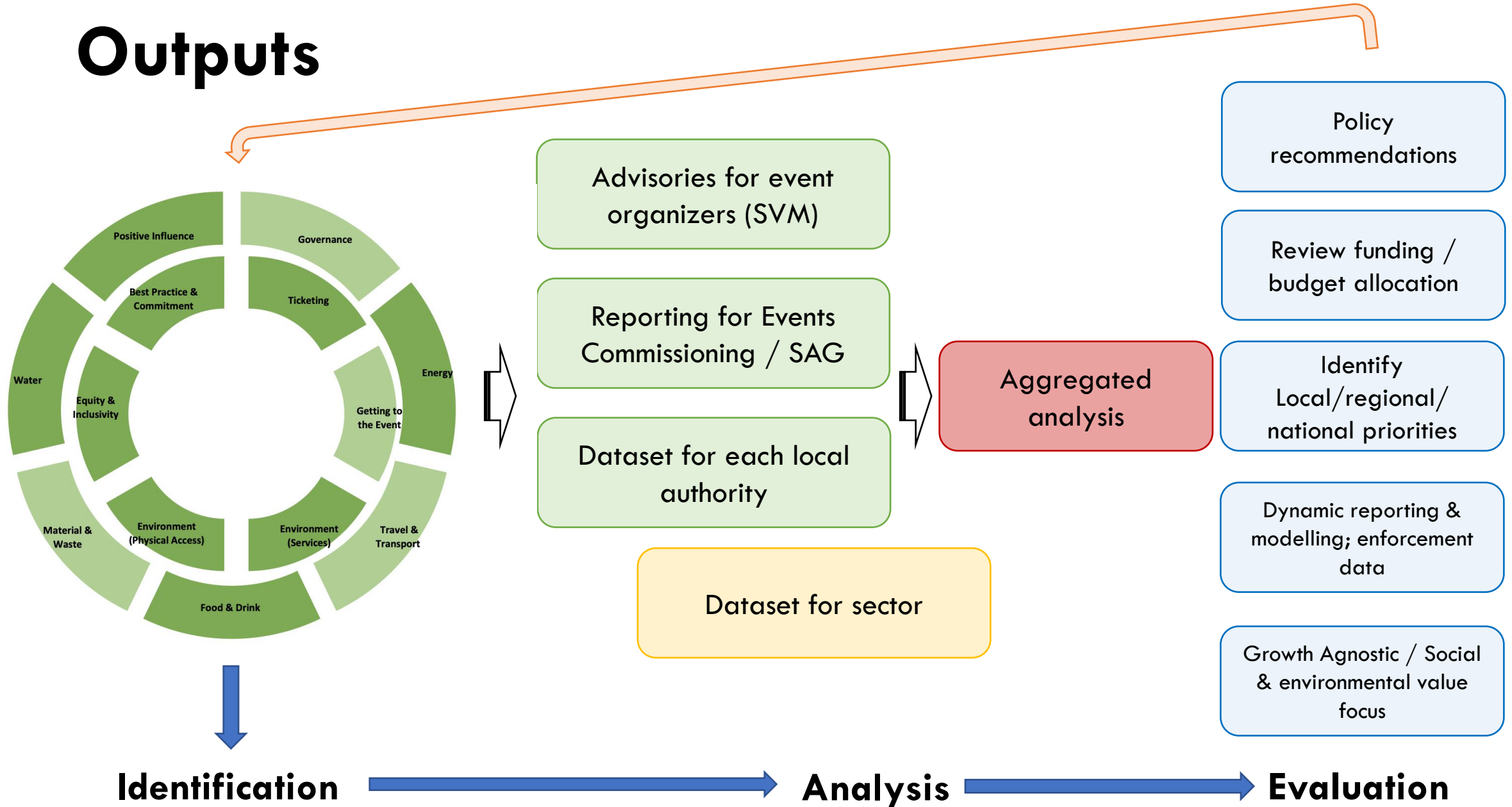
DATASET 2

Reporting disclosure for CO₂e for selected sample
CO₂e reduction tracking using a variety of carbon measuring frameworks

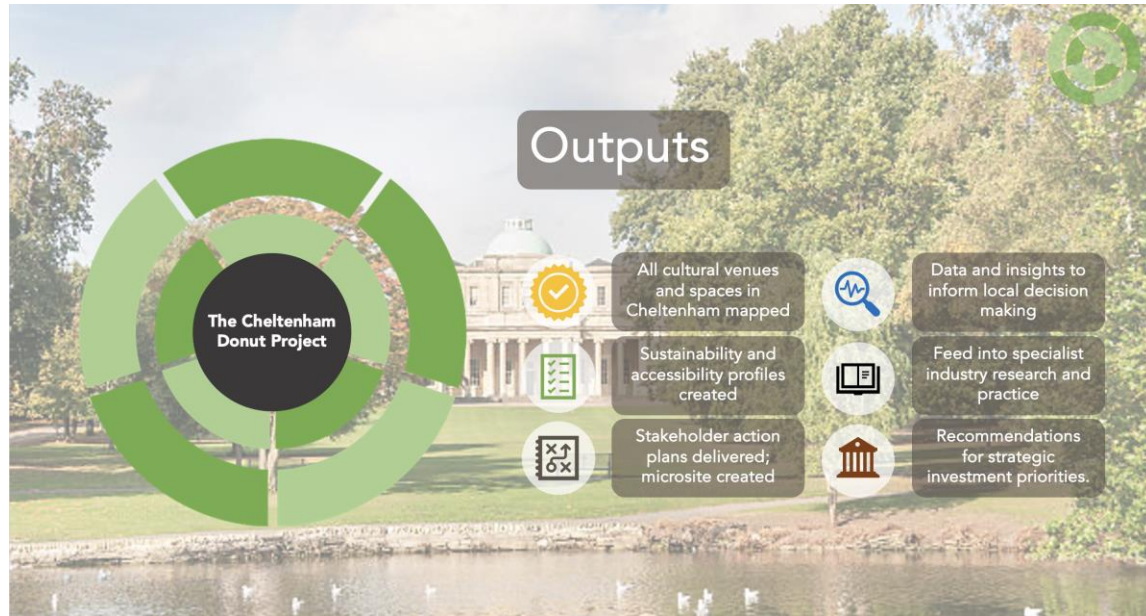
DATASET 3

Qualitative user data from event managers, local authorities and 3rd party / ALMOs etc

Outputs



Next Steps



Phase II: Localised audit of venues

Expanding into **leisure, tourism, hospitality & public spaces**

Venue & space audit to inform **policy reporting**

Expansion of toolkit use through a wider range of practice e.g. procurement, social value modelling, land use & more



Identifying quick wins & innovating

One product of initial research has been **AERI**

Shared library of events access resources

Improves access, promotes sustainability, **saves money**

Initial funding of £5K from GCC to explore in 2024

Recommendations

How Can Councils Support Music Tourism?

Communicate



- Connect with equivalent individuals and departments in other local authorities
- Consolidate relationships with local music providers / event managers
- Build practice and progress into your comms strategy: work together locally

Comprehensive Approach



- Consider a holistic approach that ties into existing cultural strategies within relevant departments (e.g. parks, licensing, sustainability etc for events)
- Consider a model that unites local civic, cultural and academic priorities
- Build something that creates less work: aim should be to reduce admin and improve cohesion

Community Strategy



- Build it to last with your local community, all the specialist info is out there already
- Form a culture board or steering group; activate specialists within the local community
- Structuring a wider community approach reduces risk overall: avoid single points of failure and develop steering groups to incorporate a wide range of voices and lived experience

Questions?

