



Funded by  
UK Government

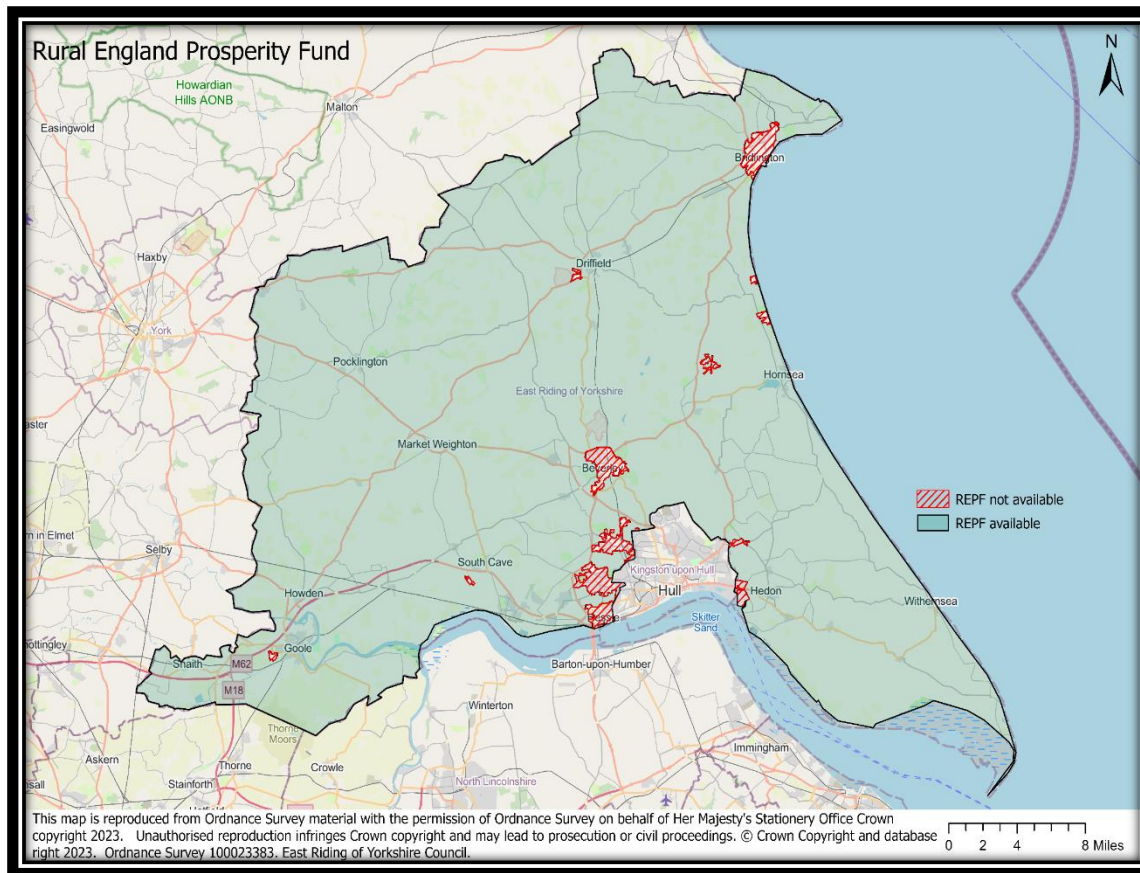
POWERED BY  
**LEVELLING  
— UP —**

# Shared learning from the UKSPF

6 December 2023



**EAST RIDING**  
OF YORKSHIRE COUNCIL

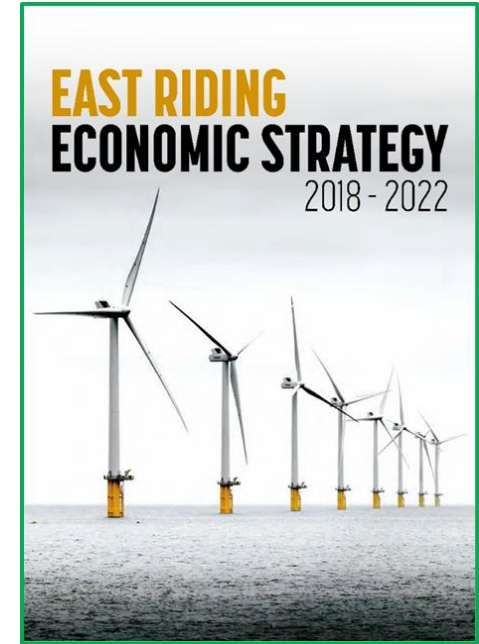


East Riding of Yorkshire UKSPF & REPF Allocations	UKPSF Revenue	UKPSF Capital	REPF Capital	TOTAL
Communities and Place	2,254,662	1,662,387	810,827	<b>4,727,876</b>
Supporting Local Business	2,512,898	480,400	991,000	<b>3,984,298</b>
People and Skills	2,831,997	0	0	<b>2,831,997</b>
Management & Admin (6.5%)	677,275	0	0	<b>677,275</b>
<b>TOTAL</b>	<b>8,276,832</b>	<b>2,142,787</b>	<b>1,801,827</b>	<b>12,221,446</b>

# UKSPF + REPF Investment Plan Development

## Town Centre Recovery Action Plans

Driffield		
Themes	Growth Opportunities	Current/Planned Activity
<b>Housing</b>	Local Plan allocations  Derelict sites around town centre offer potential for brown field development but market failure continues for some sites; Mott MacDonald study (2016) sets out the potential for development of sites through targeted interventions	Local Plan infrastructure developments according to masterplan provisions/developer agreements  Driffield TC promoting Community Led Housing Initiative – supported through ERYC Housing Strategy to undertake a Housing Needs Analysis; challenges for resource to lead a project and for financial management/delivery capacity  See also – development of Driffield Town Strategy (Autumn 2020)
<b>Town Centre &amp; Retail</b>	Current issues identified by review of East Riding Local Plan (White Young Green) Town Centre Retail and Leisure Study (TCRLS)  "Future Towns" YNYER LEP commissioned report by Metro Dynamics makes recommendations for general future role of town centres and particular analysis of Driffield	Driffield Town Strategy – Funding now in place through LEP/DTC and ERYC for commissioning September 2020 to report January 2021 (will include review of TCRLS, Mott MacDonald Investment Strategy Study, and Future Towns report)  Consider as part of the Driffield Town Strategy commission Real Dynamics makes recommendations for general future role of town centres and particular analysis of Driffield
<b>Business &amp; Employment</b>	Significant SME business base across the whole town, with employment sites at Killethorpe and Skerne Road offer potential for further development, investment and new business to provide local employment; Mott MacDonald study (2016) sets out the potential growth of both sites supported through a series of interventions  Small business growth	Recommendations from Mott MacDonald report (2016) to be considered as part of Driffield Town Strategy  Love Your High Street – scope and eligibility broadened to help Covid-19 response for small business to undertake small scale improvement/growth opportunities  Strengthen links for local business with ERYC Business Services and opportunities for <a href="#">Supply Chain Network</a>
<b>Place Based Action</b>	Driffield Foodbank – requires new premises from June 2020 Driffield Methodist Church – re-development of DMC providing extensive community facilities in the town centre Driffield Youth Action – successfully established and operated at Driffield Skatepark, Skerne Road Driffield Skatepark – independently managed and operated	Options under consideration but requires sustainable operating base – Driffield Food Bank were a leading partner in the Driffield Community Hub pandemic response arrangements.



## Commonplace Engagement Platform

Log in ☰

### Get involved in developing your East Yorkshire coastal towns

Our East Yorkshire coastal towns of Bridlington, Hornsea and Withernsea are a great place to live, work and visit but we want to make them even better. We aim to use this platform as a community space to understand the issues and share ideas and opinions to keep our coastal towns moving forward. By working together with the Town Councils, residents and local businesses we can support vibrant and thriving towns that better meet the needs of the community and attracts businesses, customers and visitors. When you sign up you will be notified about progress and future proposals shaped by the responses received in these engagements.

So, get involved, and let's hear what you have to say!

Keep me updated

Your email will be used to contact you about project updates. You can unsubscribe at any point. Please read our [privacy policy](#).

About the project
 Timeline
 Latest news
 Have your say
 The team

HAVE YOUR SAY



# Delivery: Communities and Place Year 1



# Delivery: Communities and Place Years 2&3

- Single open application process across UKSPF and REPF
- Web-based grant management system (whole application life cycle)
- Small grants (£5,000 to £24,999) and large grants (£25,000 to £100,000)
- Digital grants (up to £10,000)
- Initial Expression of Interest (EOI) stage
- Full application form
  - Additional info (i.e., supporting documents e.g. relevant policies, accounts etc.)
  - Full technical assessment (compliance, VFM, outputs and outcomes, scoring against priorities – minimum benchmark score)
  - Grant Panel – officers and external stakeholders (consider additionality, meets local and strategic objectives and priorities)
  - Open call grants – all assessed together to enable ranking
- Allocation of funding determined by officers (behind the scenes) to maximise fund availability across both UKSPF and REPF
- Year 3 – thematic calls, learning from Year 2

## Year 2 (2023-2024)

- Available allocation of £740k with a provisional further £1m in Year 3 offered as a managed contract to VCSE provision previously supported ESIF
- Open grant call – full application stage only
  - Full technical assessment by officers (compliance, VFM, outputs and outcomes, scoring against priorities – minimum benchmark score)
  - Decision to award taken by Local Partnership Board (due to size of grant)
- Contract awarded for delivery across interventions E33 to E36 as part of a partnership-led approach with a consortium of eligible VCSE delivery partners

## Year 3 (2024-2025)

- Discussions held with local stakeholders in September 2023 to review the investment priorities and develop final call designs
- Remaining allocation of £1.1m - £700k now out for applications
  - Support for the Unemployed (£300k)
  - Skills support for the Workforce (£400k)
- Some budget retained to enable additional calls to be published to respond to any unmet needs once the above calls close

# Delivery: Supporting Local Business

- **Delivery drivers**

Economic Strategy and Data

Shared Prosperity Output Requirements

Sector Growth

Partners

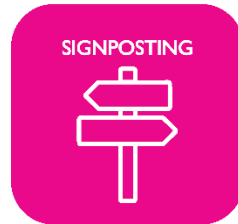
Business Feedback / Needs

# Delivery: Supporting Local Business

- **Delivery mechanism**

- To listen and support the local business community by being responsive to individual needs through a variety of support mechanisms in a cost effective manner.
- Work with key stakeholders, partners, specialists from across the priorities to maintain up to date knowledge of current offers, understanding of need, development of offer and ensure value added.

- **Delivery model**





- **Key Stakeholders / Delivery Partners**

- Keeping us up to date on your current offers and support for brokerage and sign posting
- Be part of working groups to feed in business intelligence discuss ideas, requirements to shape future service offers.
- To be advocates of our services / tools
- Delivering elements or parts of the service

- **Specialist projects**

- Development of key projects responding to interventions and economic conditions.
- Bubwith Business Directory
- Tourism Conference
- Made in East Yorkshire Xmas Market
- Food and Drink sector development

- **Technical Assistance**; continuing with the model of ESIF TA, supporting applicants to bring forward good quality, compliant projects, as well as supporting robust governance, accountability and partnership engagement. Activity includes;
  - One to one support, one to many support workshops
  - Project Officer assigned to each project
  - Monitoring visits during project delivery
  - Separation of duties from staff working with projects and those appraising projects
  - Workshops; how to apply, compliance (subsidy control, procurement, publicity, document retention, risk), outputs and outcomes, project life cycle
- **Quarterly monitoring**
- **End of project evaluation**

# Beverley Festival of Angels

11 December 2022 -  
14 January 2023

This project has used the social value engine to help identify a monetary value to represent the estimated social return of the project using indicative data. For more information please visit [socialvalueengine.co.uk](https://socialvalueengine.co.uk)

## Social Value Impact

The Festival of Angels took place at St Mary's Church, Beverley. It was a hugely successful, illuminated art project and built on Beverley's strengths as a key market town with a regular and diverse events calendar.



For every **£1** invested,  
**£5.56** of social value  
has been returned.

Total Social Value Achieved: **£304,959.05**

Total Cost of Delivery: **£54,884.19**



**440+**

Volunteer  
Hours



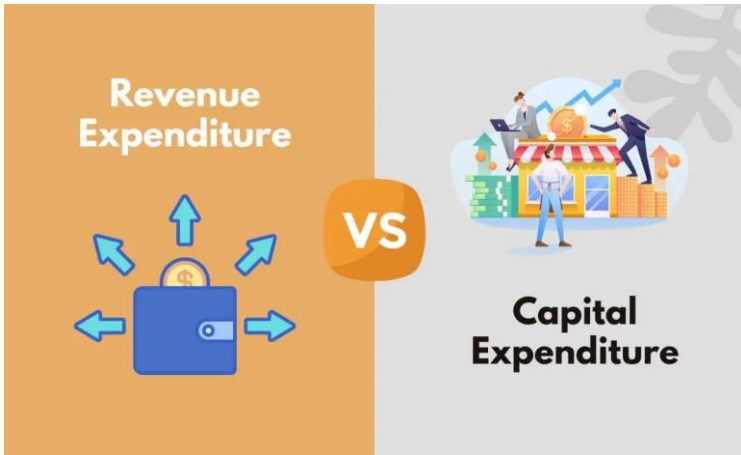
**29,000+**

People  
Benefited

# Key challenges to date

**EXPECT DELAYS**

**PAID UPFRONT**



# Information / Contact Points



**EAST RIDING**  
OF YORKSHIRE COUNCIL



For further information on the Council's delivery of the UKSPF and REPF please visit:  
<https://www.eastriding.gov.uk/council/grants-and-funding/uk-shared-prosperity-fund/>

For further information regarding the East Riding's UKSPF and REPF programmes, email:

- [ukspfund@eastriding.gov.uk](mailto:ukspfund@eastriding.gov.uk)
- [business.support@eastriding.gov.uk](mailto:business.support@eastriding.gov.uk)



<https://howtodoitforeastyorkshire.org/>