

MENTAL HEALTH EQUALITY

HOW TO BUILD A MENTALLY HEALTHIER NATION

Andy Bell

andy.bell@centreformentalhealth.org.uk

@CentreforMH @Andy__Bell__

7 November 2023

WHO WE ARE



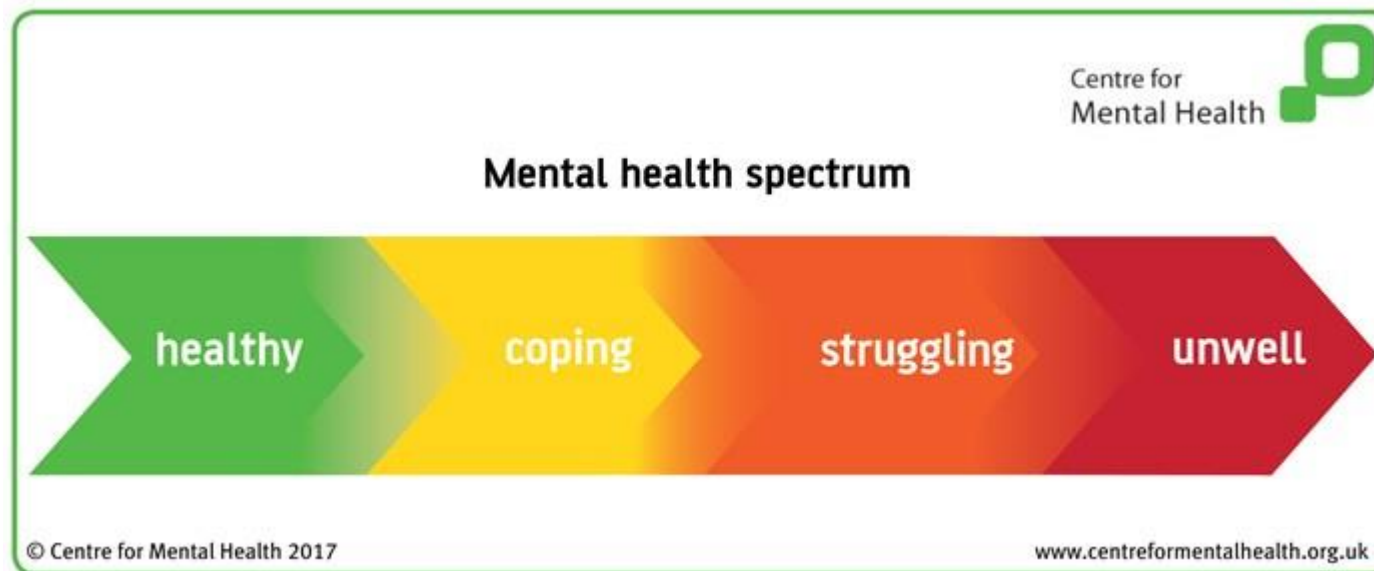
Centre for Mental Health is an independent charity.

We take the lead in challenging injustices in policies, systems and society, so that everyone can have better mental health.

By building research evidence to create fairer mental health policy, we are pursuing equality, social justice and good mental health for all.

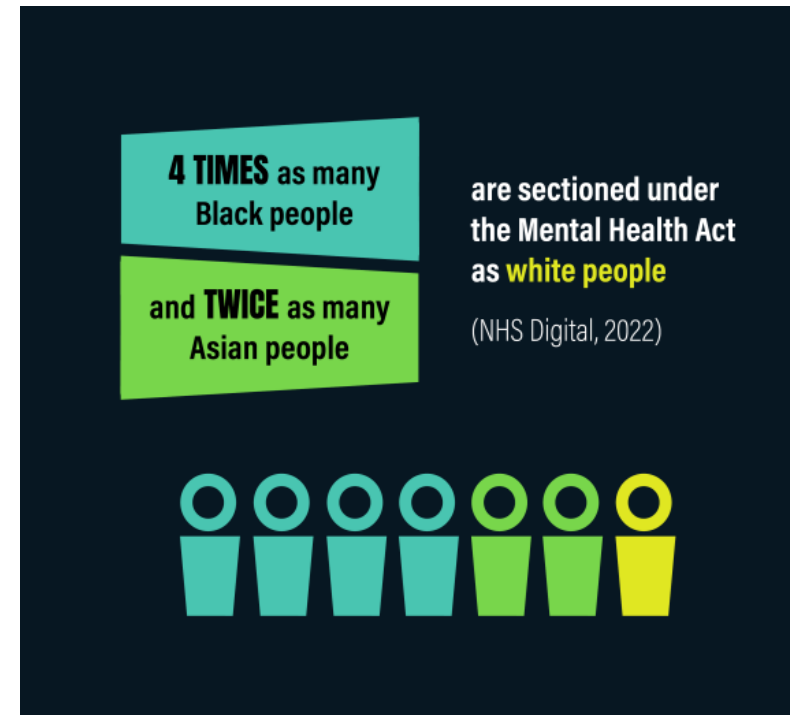
MENTAL HEALTH SPECTRUM

- ◎ About 1 in 4 have a current mental health difficulty
- ◎ Lifetime risk approx. 3/4
- ◎ Risk and protective factors determine our positions on the spectrum during our lives



RISK FACTORS

Traumatic events and experiences
Abuse and neglect
Isolation and loneliness
Bullying
Poverty and financial precarity
Insecure housing and homelessness
(Fear of) crime
Discrimination
Racism



GROUPS FACING HIGHER RISKS

People on low incomes
Racialised communities
Disabled people
LGBTQ+
Long-term illness
Neurodiverse
Looked After Children
Criminal justice system
Residential care

Children from the **poorest 20%** of households are **four times** as likely



to have serious mental health difficulties by the age of 11 as those from the **wealthiest 20%**

(Morrison Gutman *et al.*, 2015)

**JOIN US IN DEMANDING
A FAIRER AND HEALTHIER
FUTURE FOR US ALL**

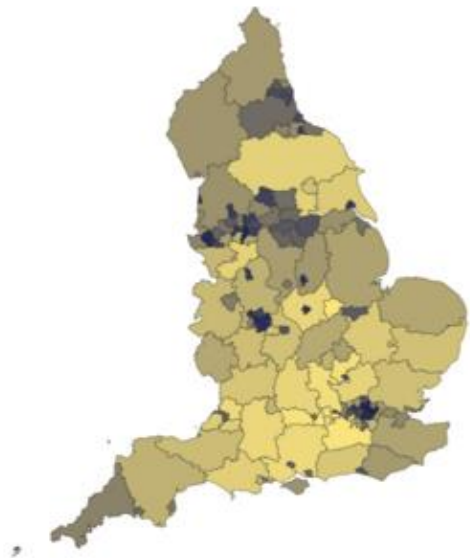
DEPRESSION AND DEPRIVATION

Figure 4: Map of County & UA (pre 4/19)s in England for Estimated prevalence of common mental disorders: % population aged 16 & over (Percentage point - per 100 2017)

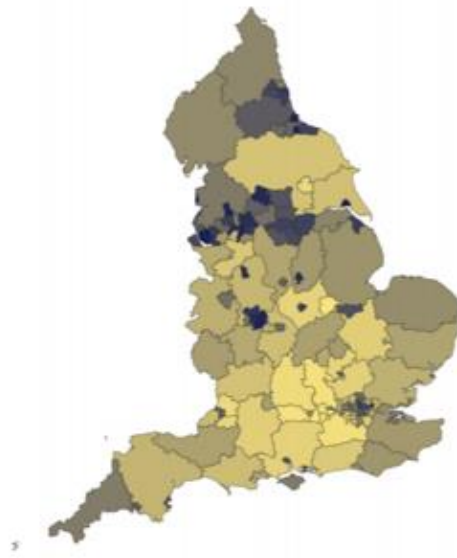
Figure 5: Map of County & UA (pre 4/19)s in England for Deprivation score (IMD 2015) (Score - 2015)

Figure 2: Map of County & UA (pre 4/19)s in England for Estimated prevalence of emotional disorders: % population aged 5-16 (Proportion - % 2015)

Figure 3: Map of County & UA (pre 4/19)s in England for Children in low income families (under 16s) (Proportion - % 2016)



Continuous: Lowest Highest

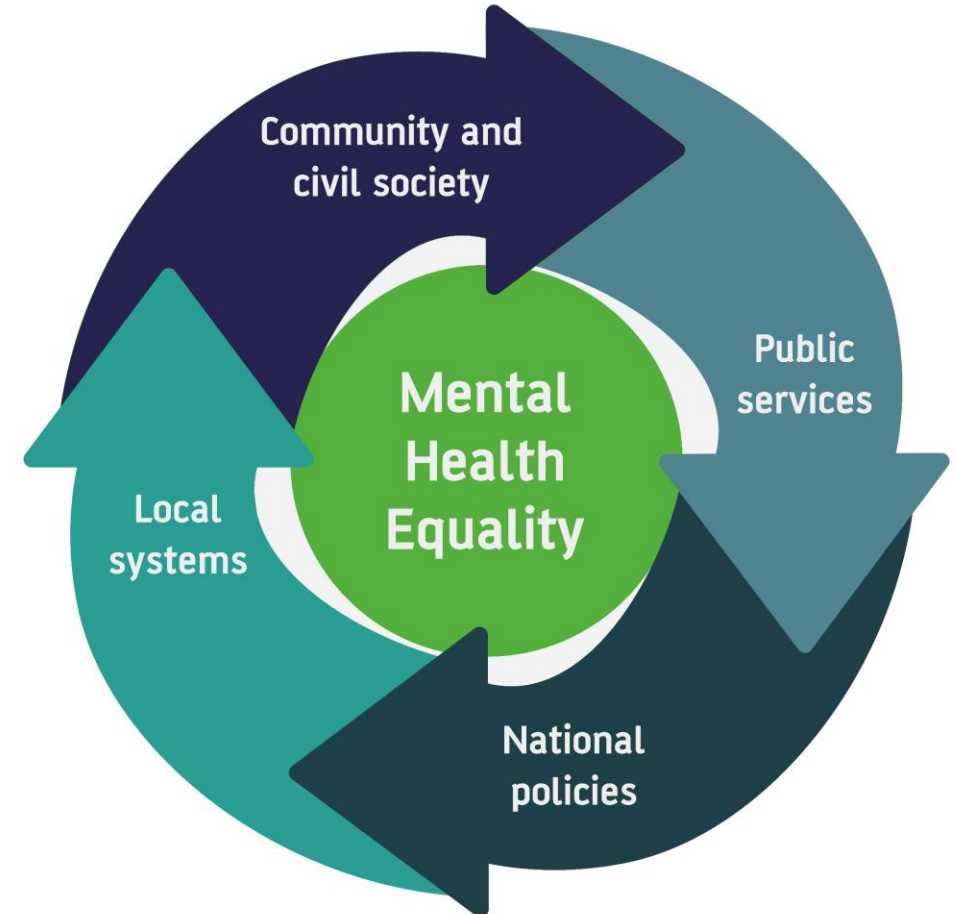


Continuous: Lowest Highest

Used with permission from Public Health England

A SYSTEM DESIGNED FOR EQUALITY

- ⊙ Mental health is made in communities
- ⊙ Supported by public services...
- ⊙ ...local systems...
- ⊙ and national policies



MADE IN COMMUNITIES

- ⦿ Communities can create good mental health through:
 - Sense of belonging & being valued
 - Mutual aid and peer support
 - Empowerment & challenging unjust systems: collective impact model
 - Safe, trustworthy sources of support
- ⦿ Challenges:
 - Insecure, short-term statutory sector funding
 - 'Class system' in charitable activity and philanthropy

A MENTALLY HEALTHIER NATION

- ⊙ A national mental health plan
- ⊙ Mental health in all policies
- ⊙ Social security
- ⊙ Education
- ⊙ Justice
- ⊙ Race equality



- ▶ Address the causes of mental ill health
- ▶ Eradicate mental health inequalities
- ▶ Ensure timely access to local services

MENTAL HEALTH SERVICES IN TEN YEARS' TIME...

- ⊙ 1. More will be done to prevent mental health difficulties
- ⊙ 2. Early intervention will be the norm
- ⊙ 3. No wrong door to get quality, compassionate care
- ⊙ 4. Services will see the bigger picture in people's lives
- ⊙ 5. Services treat you as a whole person
- ⊙ 6. Services proactively tackle structural inequities and injustices
- ⊙ 7. Coproduction in service design, development and delivery
- ⊙ 8. Autonomy and human rights boost for community support
- ⊙ 9. A thriving, well-supported and diverse workforce
- ⊙ 10. Services measure & are accountable for outcomes that matter

MENTALLY HEALTHIER COUNCILS



MENTALLY HEALTHIER COUNCILS NETWORK

- Open to council officers and members
- Free to all local government workers
- News, training and events to support mental health improvements through local government



Takes seconds to sign up here!
(Please sign up using your 'gov.uk' email address)

<https://centreformentalhealth.us3.list-manage.com/subscribe?u=60c1b1ba2c1557649e61daa9a&id=f1e03828e1>

MENTALLY HEALTHIER
COUNCILS NETWORK

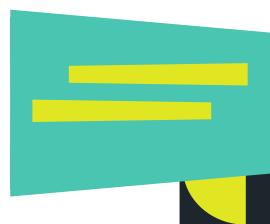


REPORTS AND RESOURCES

- ⦿ 'A Mentally Healthier Nation'
<https://www.centreformentalhealth.org.uk/publications/mentally-healthier-nation>
- ⦿ 'No Wrong Door' <https://www.centreformentalhealth.org.uk/publications/no-wrong-door>
- ⦿ Mentally Healthier Councils Network
<https://www.centreformentalhealth.org.uk/mentally-healthier-councils-network/>
- ⦿ 'Mentally Healthier Council Areas'
<https://www.centreformentalhealth.org.uk/publications/mentally-healthier-council-areas-0/>

ANY QUESTIONS? 

THANK YOU



Andy Bell

andy.bell@centreformentalhealth.org.uk

[@CentreforMH](#) [@Andy__Bell__](#) [@EquallyWellUK](#)