



ingeus

Unlocking Opportunities:

Government Funded Employment
Programmes in the UK

About us

ingeus

Local Government is missing out on some serious talent because they find it difficult to attract, recruit and retain disabled employees using the funded services that are available to support them.

The Work and Health Programme exists specifically to support people with a disability or long-term health condition to address and overcome barriers to employment. It offers personal support to help:

- Identify employment needs
- Match skills to work that is available
- Connect with employers
- Find long-term employment
- Access training to support employment
- Manage health conditions to reduce their impact on finding work

The best bit?
As Government
funded
programmes
there is no cost
to recruiting



The labour market

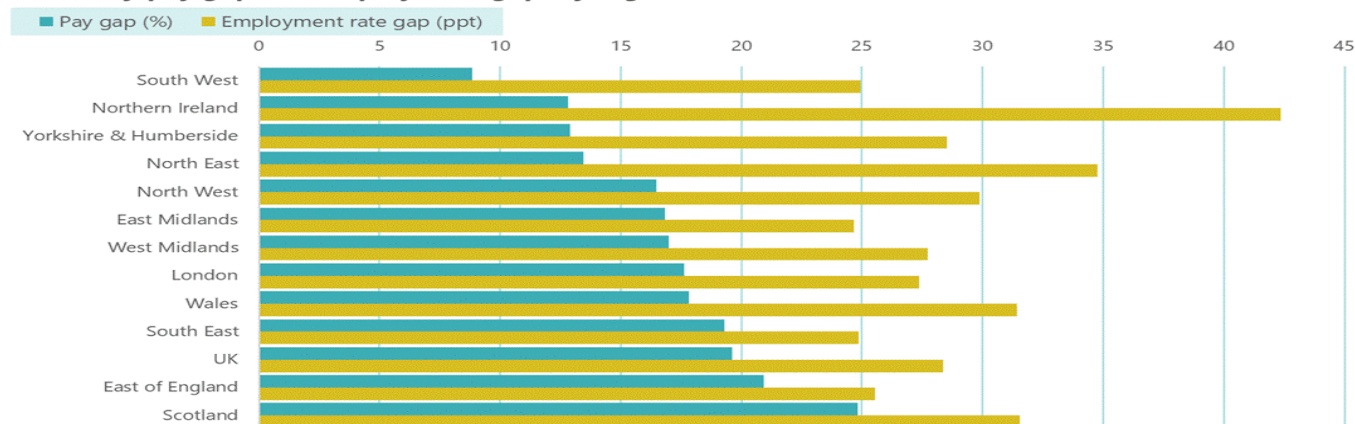
Headline indicators for the UK labour market

March to May 2023

76.0% Employment (ages 16 to 64)	4.0% Unemployment (ages 16+)	20.8% Economic inactivity (ages 16 to 64)
---	---	--

Publication: UK Labour Market: July 2023

Disability pay gap and employment gap, by region



Source: TUC analysis of Labour Force Survey, Q3, 2019-Q2, 2020

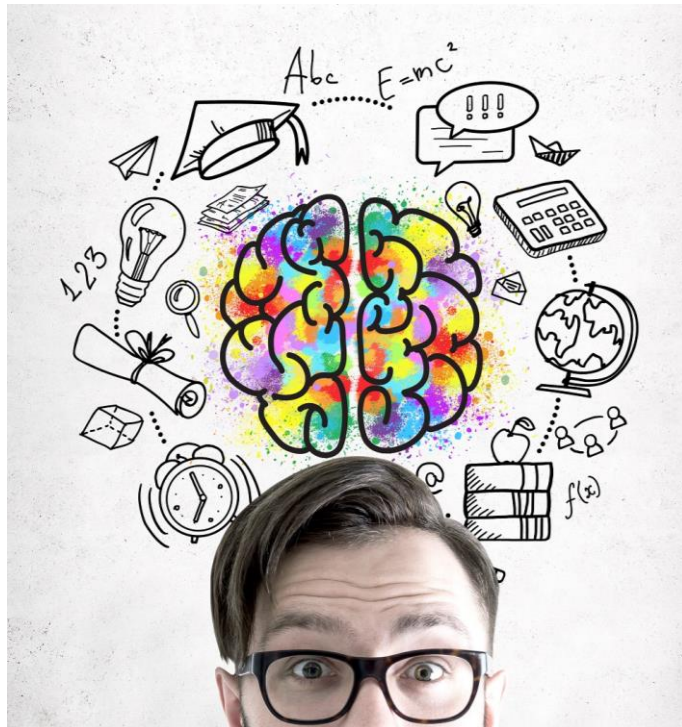
The labour market in the UK at present is impacted by many factors including unemployment, underemployment, economic factors, social factors and the pandemic. This has had a severe impact on the disability employment gap and Local Authorities are able to tap into the many thousands of participants on employment programmes to meet the recruitment, skills and talent needs of their business.



What we can offer local authorities

ingeus

Accessing employability services is simple and in most cases providers will be able to bespoke a tailored recruitment services to meet your needs.



- Targeted approach to specific jobs
- Accessing large candidate pools
- Pre-screening
- Work preparation
- Training and qualifications
- Employer routeways
- Jobs fairs and events
- Post employment support
- Guidance on reasonable adjustments
- Disability Confident support and validations



Where we work

SCOTLAND

- Access to Work Mental Health

North West

- Work and Health Programme
- Job Entry Targeted Support
- Restart Scheme
- Access to Work Mental Health
- NHS Diabetes Prevention Programme
- National Citizen Service

Greater Manchester (Devolved)

- Work and Health Programme
- Job Entry Targeted Support
- Restart Scheme
- Access to Work Mental Health
- Integrated Rehabilitative Services
- Future You (NEETS)
- National Citizen Service

West Midlands

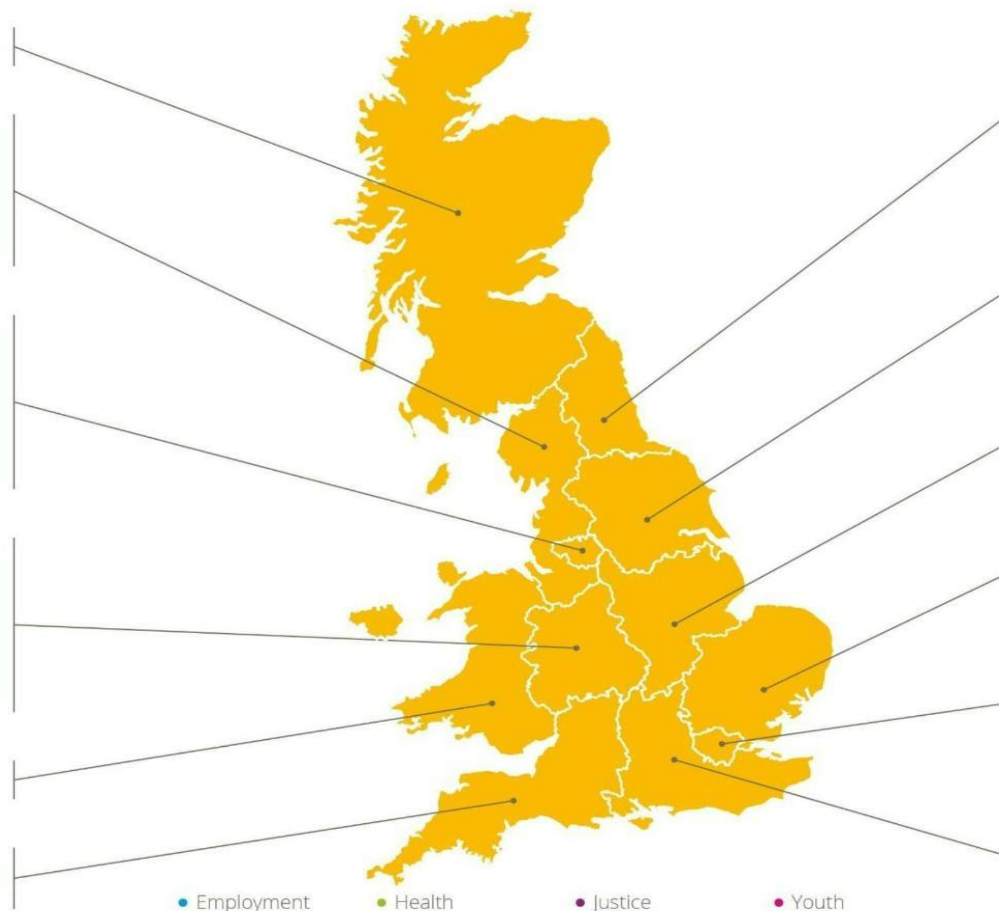
- Work and Health Programme (s)
- Job Entry Targeted Support (s)
- Restart Scheme (s)
- Access to Work Mental Health
- NHS Diabetes Prevention Programme
- Commissioned Rehabilitative Services
- National Citizen Service

WALES

- Access to Work Mental Health

South West

- Access to Work Mental Health
- National Citizen Service



North East

- Work and Health Programme (s)
- Job Entry Targeted Support (s)
- Access to Work Mental Health
- CFO3
- CFO Activity Hubs
- Commissioned Rehabilitative Services
- National Citizen Service

Yorkshire & Humber

- Access to Work Mental Health
- CFO3
- Commissioned Rehabilitative Services
- National Citizen Service

East Midlands

- IAPT
- Access to Work Mental Health
- CFO3
- Commissioned Rehabilitative Services
- National Citizen Service

East of England

- Access to Work Mental Health
- National Citizen Service

London (Devolved)

- Work and Health Programme
- Job Entry Targeted Support
- Restart Scheme
- Access to Work Mental Health
- National Citizen Service

South East

- Access to Work Mental Health
- NHS Diabetes Prevention Programme
- Commissioned Rehabilitative Services
- National Citizen Service

- Employment
- Health
- Justice
- Youth



ingeus

Visit us at: www.ingeus.co.uk/inclusiverecruitment

Email us at: employerservices@ingeus.co.uk

Telephone us on: 0800 689 0961



ingeus_uk



ingeusuk



Ingeus



ingeus_uk