

Neighbourhood Planning & Local Planning Service Redesign & Capacity Building Fund

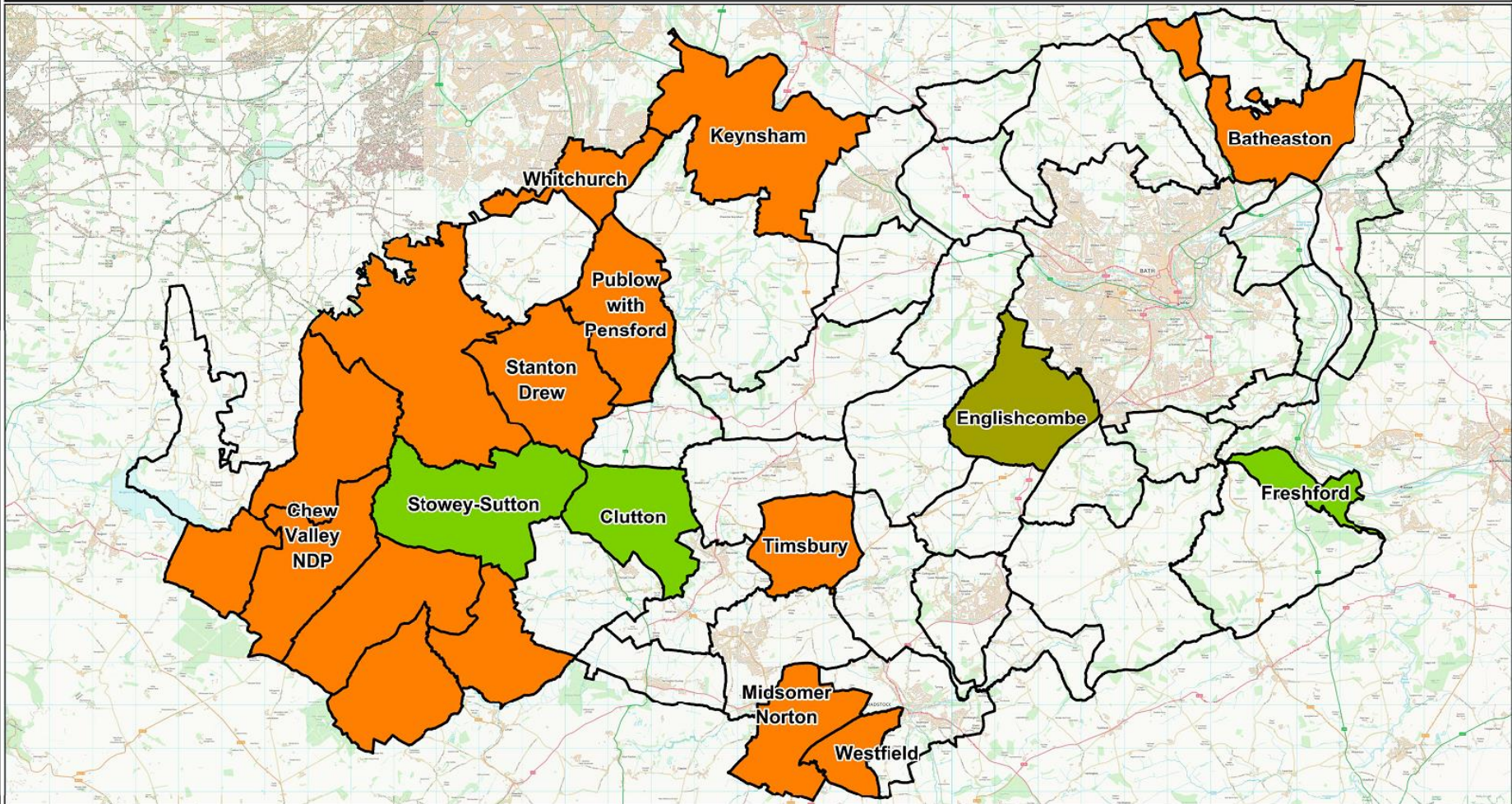
DCLG Grant Feedback Report
Bath & North East Somerset Council
July 2016

Introduction






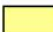
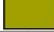


- £10,500 Grant funding awarded to B&NES Council in Jan 2016 after a competitive bidding process
- The Proposal was to “Pilot Approach supporting Neighbourhood Planning groups developing projects which deliver multiple benefits (using CIL/s106 spend)”. Including:
 - Additional Officer support to deliver this new funding model
 - Preparation of Case Studies
 - Dissemination at conferences etc.
- This report outlines the 4 Case Studies we have prepared.

Areas undertaking Neighbourhood Plans within Bath & North East Somerset

Scale : 125,000
 Author : Planning Policy, Planning Service, Place Directorate
 Date : 13/05/2016



Legend

- | | | | | | |
|--|---------------------------------|---|----------------------------------|---|---|
|  | Plan has been made |  | Plan under examination |  | Plan awaiting area designation |
|  | Plan is awaiting to be 'made' |  | Plan formally submitted to B&NES |  | Plan out for formal area designation consultation |
|  | Plan is awaiting the referendum |  | Plan area designated |  | No Neighbourhood Plan Area designated |

Case Study Overview

Case Study	NDP Status	Funding Source/Model	Stage
1: Bathampton Riverside Linear Park	Underway	£5k Capital Fund/Community Design Process	Implemented March 2016
2: Freshford Village Recreation & Play Park	Adopted	£16k s106 Funding/Community Design Process	Design Process Complete March 2016
3: West Clews Recreational Play Park	Underway	£37k s106 Funding/Community Design Process	Implemented March 2016
4: Chew Magna King George V Playing Field	Submission draft	£18k s106 Funding/Community Design Process	Design Process Underway March 2016

Case Study 1: Bathampton Riverside Linear Park Project



Before and After



Before:

Disconnect between Batheaston High Street and Bathampton Meadows and cycle route beyond. Limited public access.



After:

Improved connectivity to walk and cycle between Batheaston and Bath. Links the villages of Batheaston and Bathampton.

Improved public access and a new Riverside Park. Shared community project bringing together volunteers from two parishes (200 volunteer hours so far).

The Community Vision

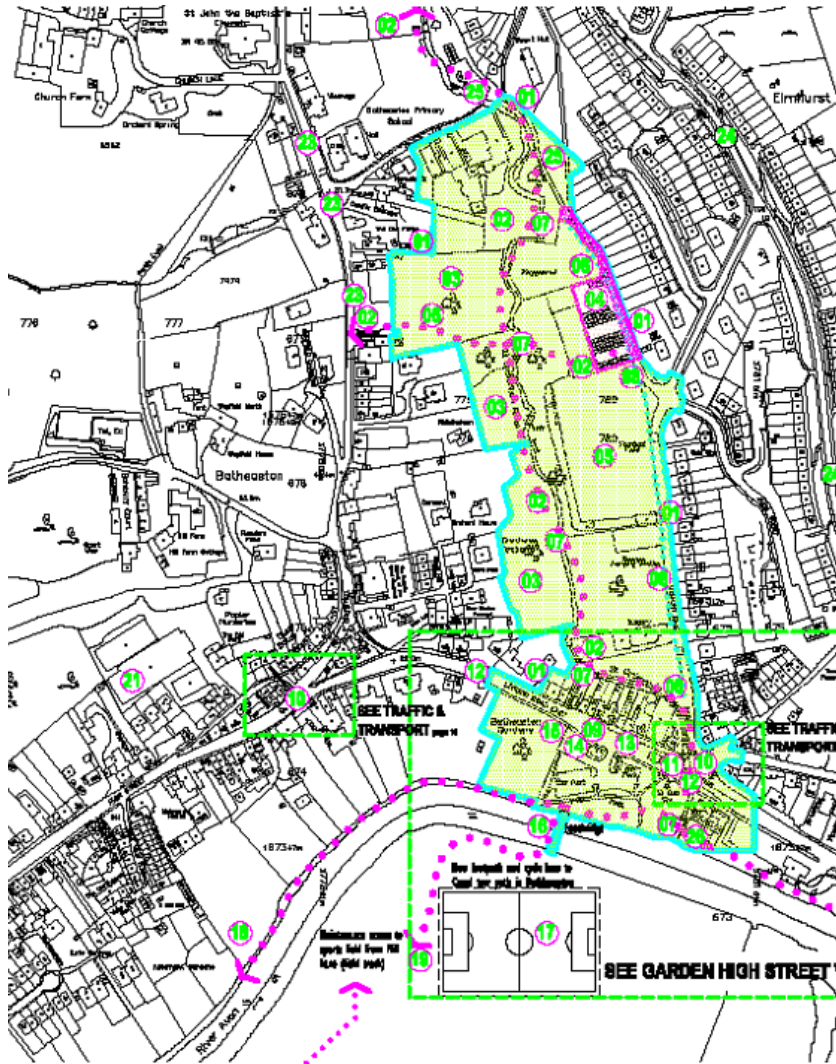


Batheaston Vision Plan (2009) identified an opportunity for a new pedestrian and cycle bridge and shared path to connect the village to Bathampton and Bath via National Cycle Route 4 along the Kennet and Avon towpath.

This was then funded by the Dept. for Transport's Local Sustainable Transport Fund supported by B&NES Council Transport team.







Batheaston Parish Council is currently preparing a Neighbourhood Plan (designated in 2013), they identified potential community projects.

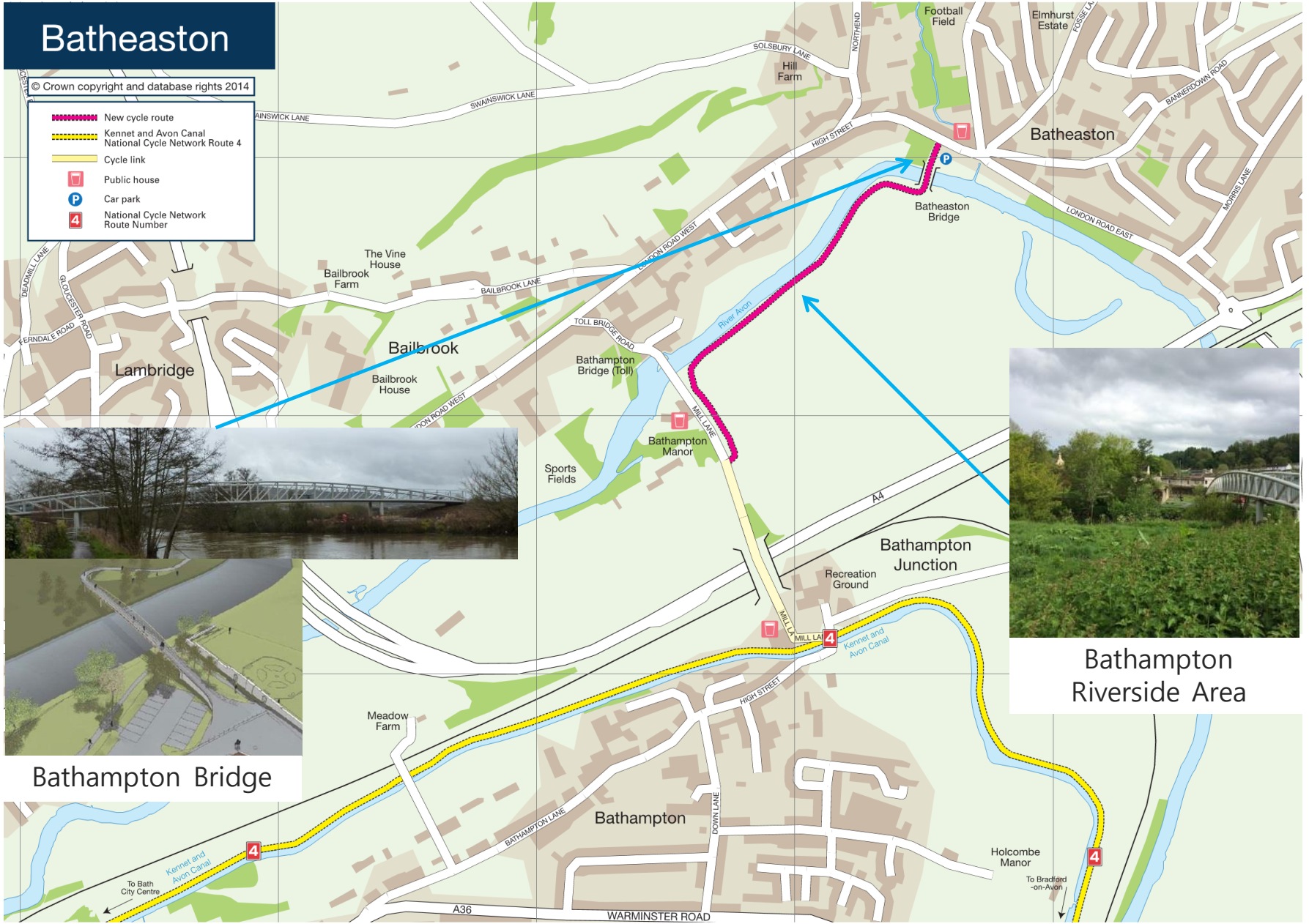
Potential to create a new Riverside Park for the community to enjoy was identified.



Batheaston

© Crown copyright and database rights 2014

-  New cycle route
-  Kennet and Avon Canal National Cycle Network Route 4
-  Cycle link
-  Public house
-  Car park
-  National Cycle Network Route Number



Bathampton Bridge

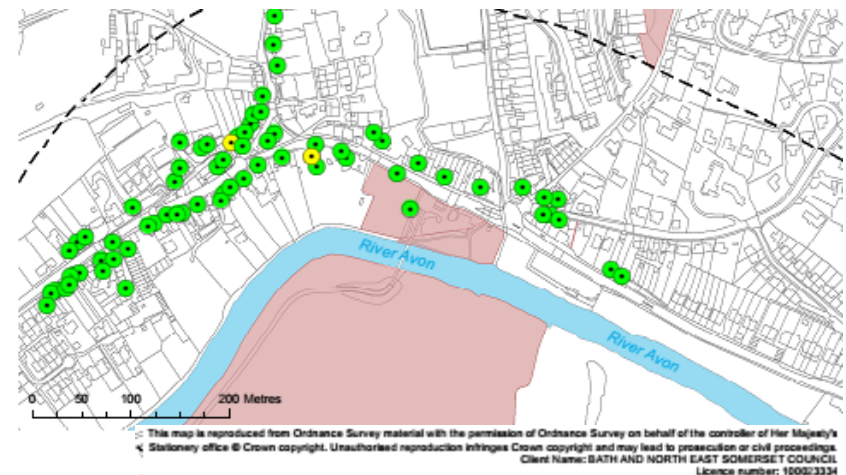


Bathampton Riverside Area



The Brief

- **The Spend:** £5,000 funding from B&NES Council River Corridor Fund (Council owned land, as shown on right in red).
- **Delivery:** Capital Fund to be delivered as community spend, with volunteer and community support key to the project.
- **Capital Project:** Create a new linear park with new planting, seating/picnic tables, community notice boards etc. and a landscape design created by the shared route and pedestrian bridge.
- **Management:** Riverside Park to be managed by the Parish Councils and their working party of volunteers going forward.
- **Context:** Pilot supported by the [WaterSpace](#) partnership – who have a remit to identify and deliver projects which revitalise waterways.



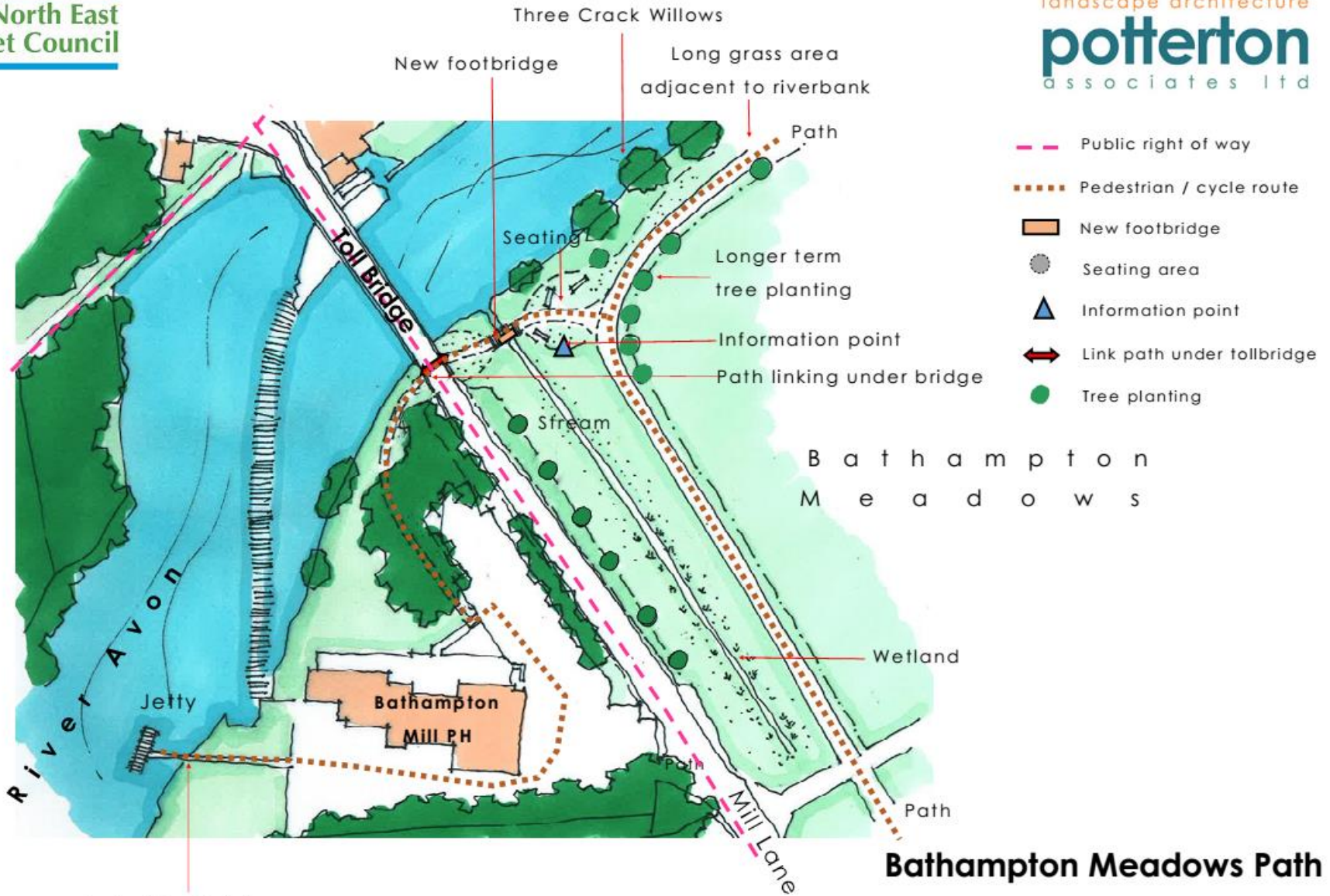


1.

Bathampton Meadows Path

Landscape schematic Area 1

Drg 556 P 10 Not to scale Feb 2016



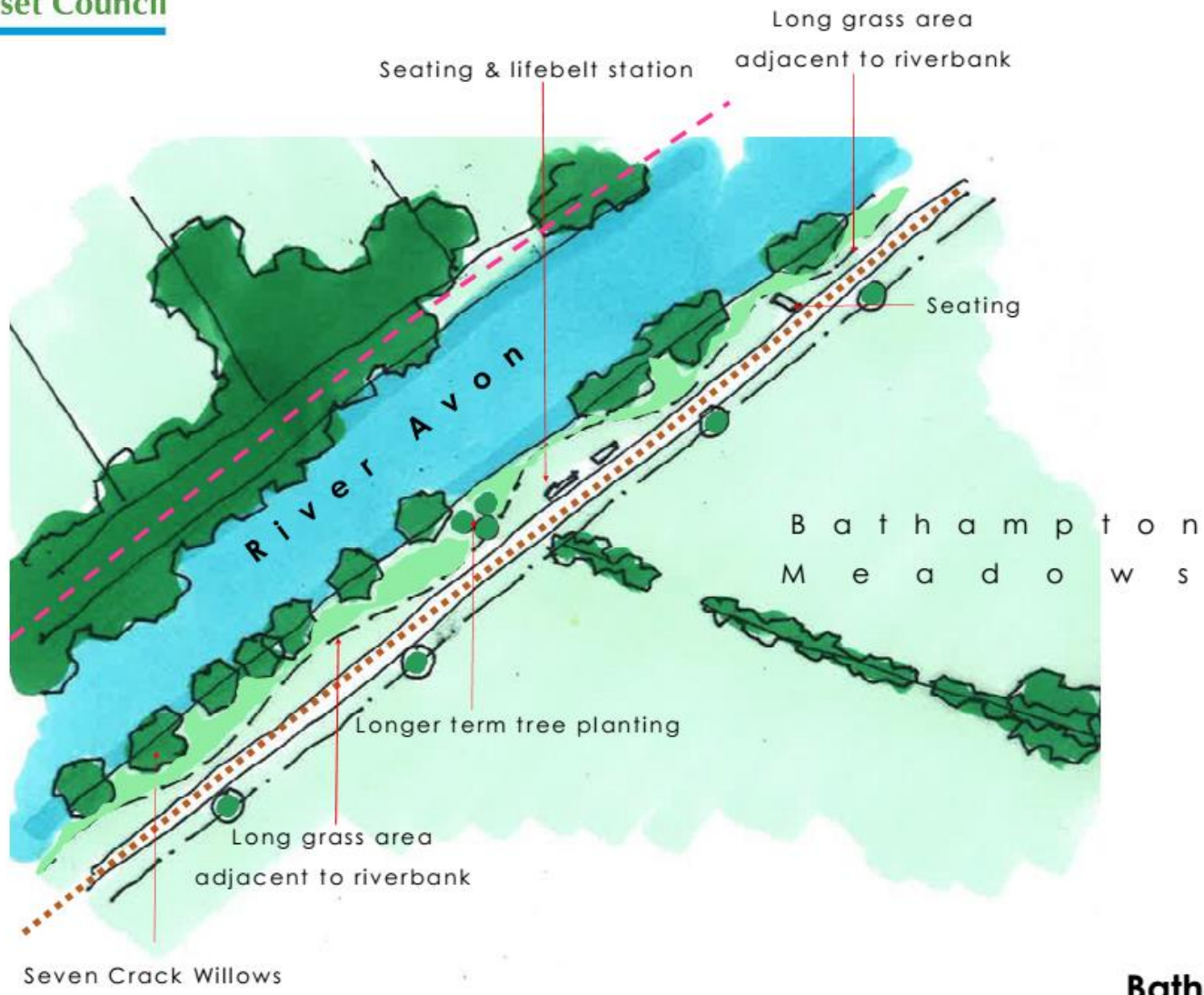
Pedestrian link from
footpath to jetty

Bathampton Meadows Path

Landscape schematic Area 2

Drg 556 P 12 Not to scale Feb 2016

NB This part is not yet implemented – future phase, which funding is being sought for.



- Public right of way
- Pedestrian / cycle route
- New footbridge
- Seating area
- ▲ Information point
- Tree planting

Bathampton Meadows Path

Landscape schematic Area 3

Drg 556 P 13 Not to scale Feb 2016



Mown grass margin adjacent to path

4.

Bathampton Meadows Path

Landscape schematic Area 4

Bathampton Riverside Linear Park Project



Mullein Moth spotted in the new Riverside Park



New Planting, Benches and Community Notice Board

Project delivered in March 2016

Partners:

Bathampton
Parish Council



Quotes

“It all looks really superb. Previously under appreciated, there are now many plans being progressed by both the volunteers and Parish Councils to take advantage of this wonderful local asset. A total of 200 volunteer hours has been put into the project to date”

Peter Fear, Bathampton and Batheaston River and Footpath Friends

“The energy and commitment of local volunteers in progressing the vision for Bathampton Riverside is impressive. They are creating a wonderful amenity for residents and visitors alike, as well as space for wildlife.”

Project Coordinator - Avon Frome Partnership

“Volunteers from both Batheaston and Bathampton have been working tirelessly to improve the appearance of the riverside area, and where new benches and community noticeboards have now been installed. It is looking great.”

Project Coordinator – River Avon, Bath & North East Somerset Council



Case Study 2: Freshford Village Recreation & Play Park



*Freshford & Limpley Stoke Neighbourhood Plan Frontrunner Group
with DCLG*

Partners:

Freshford Village
Memorial Hall

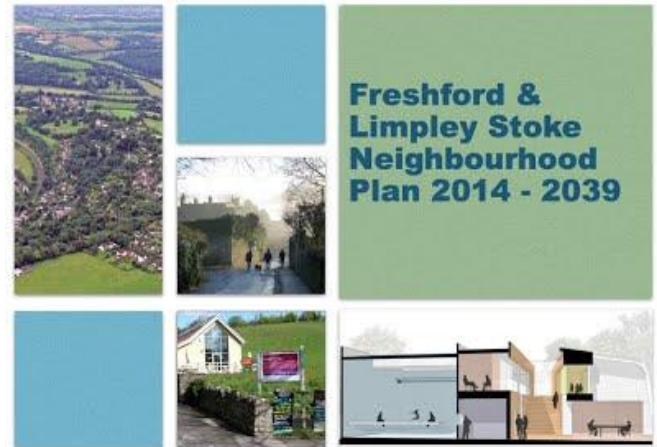
Freshford
Parish Council

The Project

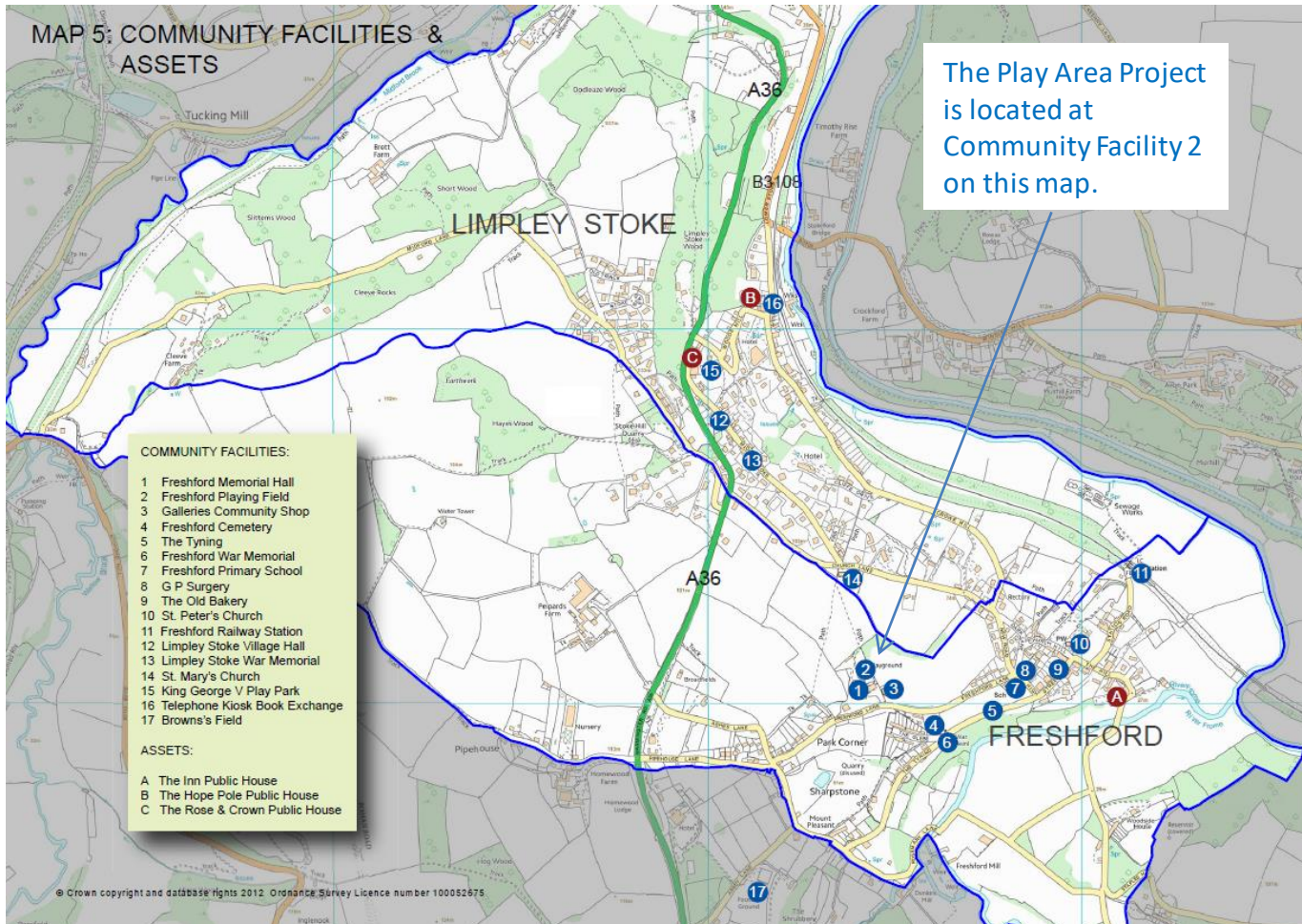
The creation of a fully renovated playground space for the Freshford community. Project design and neighbourhood consultation have been completed, construction to be implemented Summer 2016.

The Neighbourhood Plan Community Vision:

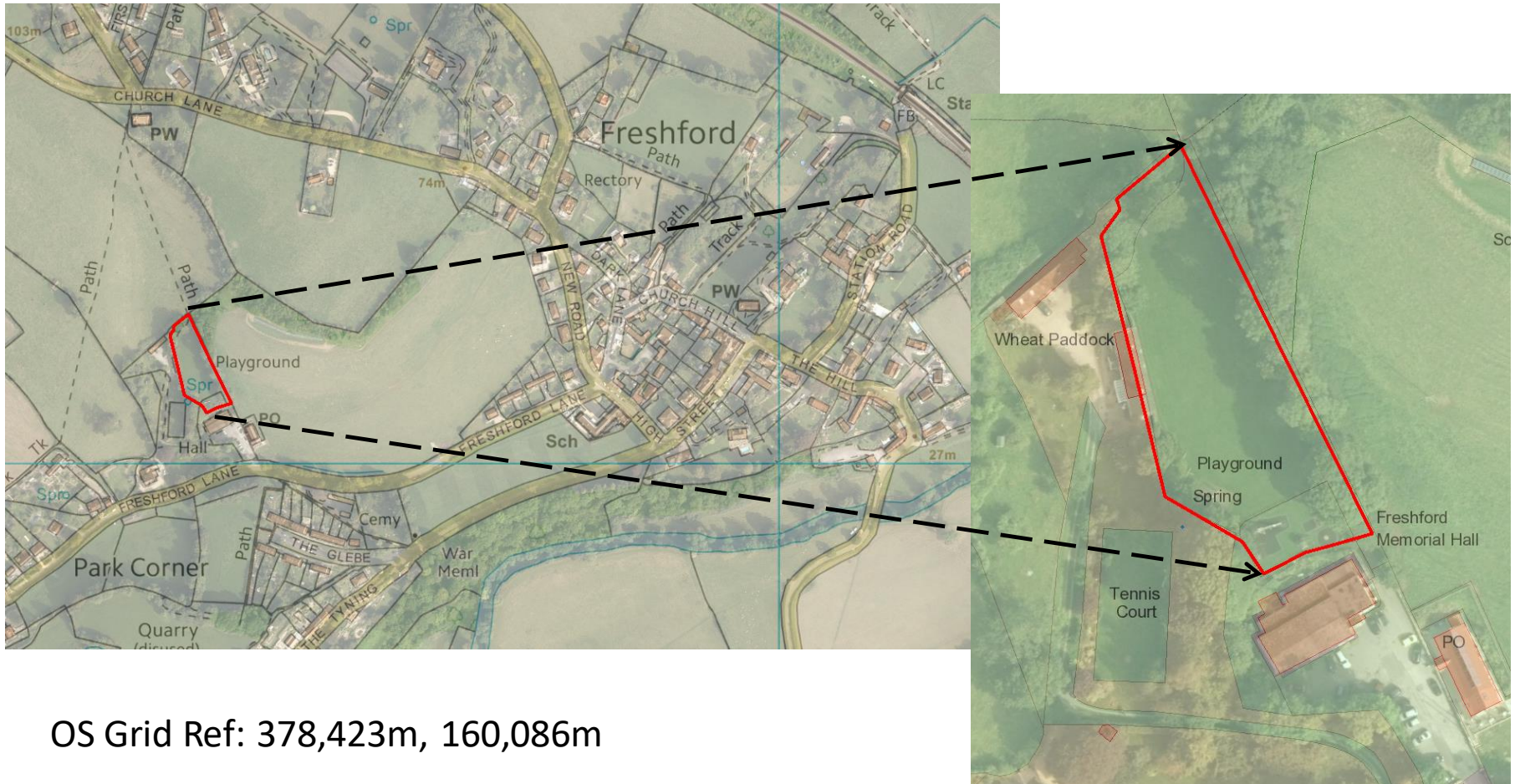
7.3.06 The playgrounds in Freshford and Limpley Stoke are important sources of play and recreation by the children in the community and they will continue to be improved and upgraded by the respective Parish Councils.



Neighbourhood Plan Community Facilities & Assets



Project Location



OS Grid Ref: 378,423m, 160,086m

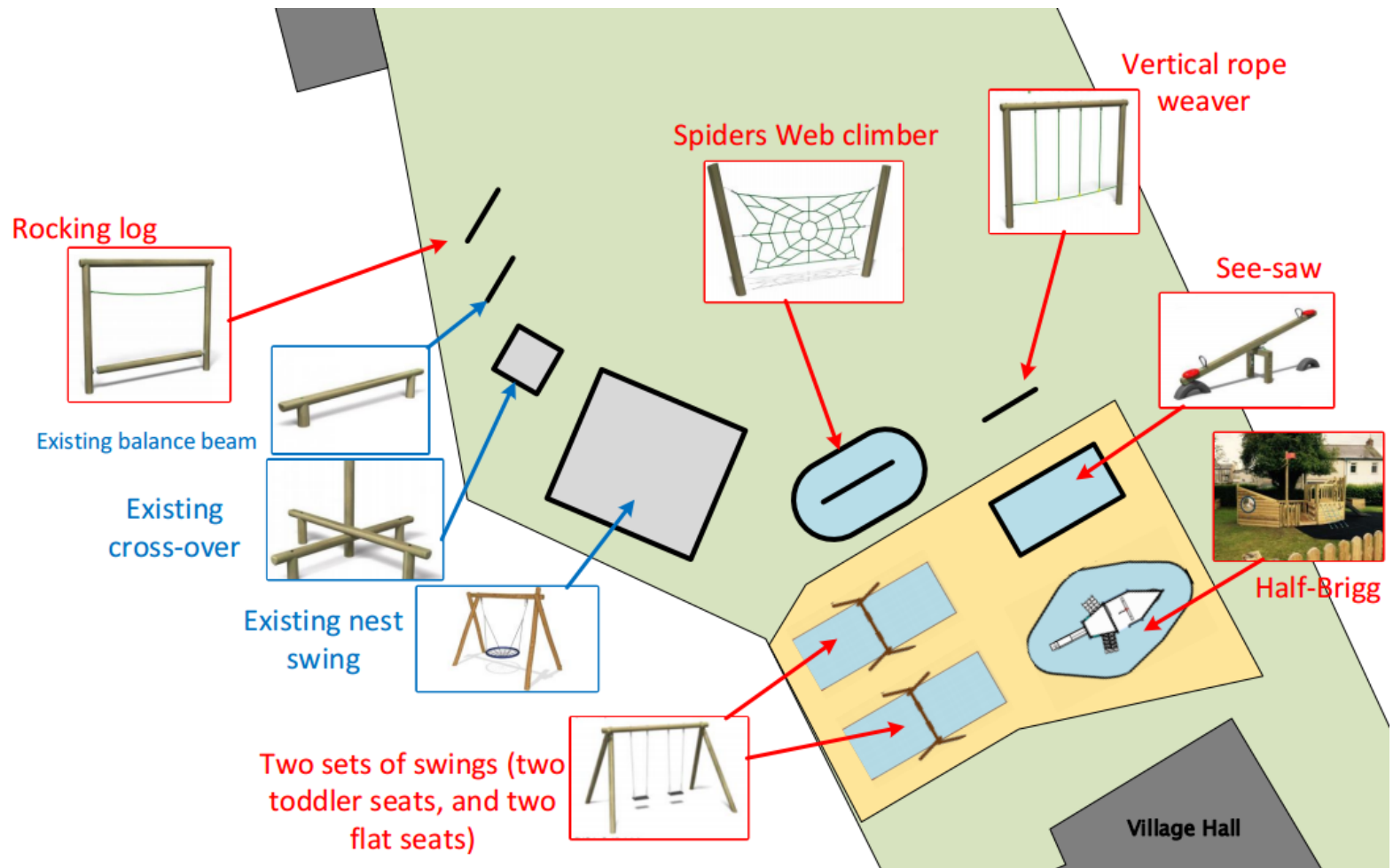
Existing Play Area

“Nearing the end of its safe life, rotting and corroding” Parish Clerk



Project Design Concept

“We have invited all members of the community to provide their ideas for new play equipment” Parish Clerk



Quotes

“The enhanced playspace behind Freshford Memorial Hall will offer a significant benefit to the local community.”

“Given the importance of play in the development of a child, any space which gives a child free reign to do just that should be seen a crucial component in a child’s life.”

“Provides a social focal point for carers to meet and socialise promoting community spirit.”

“ A good playground will also help to increase customers to the adjacent Galleries community shop”

Dr Claudia Towner, Freshford Village Memorial Hall

Case Study 3: Midsomer Norton Outdoor Gym at West Clews



Partners:



Midsomer Norton
Recreation Ground
Trust



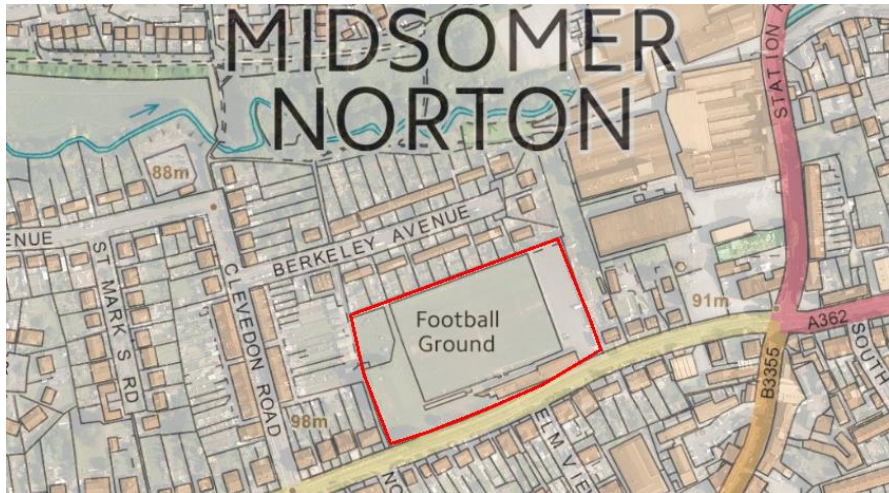
Project Summary

West Clewes Recreation Ground is the home of a new free-to-use outdoor gym and a short running track for people in the town and surrounding. Midsomer Norton Town Council, manages the ground as the Trustee of Midsomer Norton Recreation Ground Trust, and has implemented the project to complement their Neighbourhood Plan objectives using S106 Greenspace Planning Obligation contributions.

The Neighbourhood Plan Community Vision:

Midsomer Norton Neighbourhood Plan Draft Objectives include :
“Expanding and developing opportunities for events and activities to be held in public spaces” and “Ensuring the level of health facilities and infrastructure meets the needs of our growing community.”

West Clews Recreation Ground Project Location



OS Grid Ref: 366,514m, 154,558m

Photo and aerial photography prior to project implementation.

Statement from the project manager and parish clerk, Clive Stillwell

The new Outdoor Gym at West Clewes in Midsomer Norton has been installed on land that Midsomer Norton Town Council holds in trust for the local community. The project was initiated to widen the appeal and use of the land which, as well as being home to a local football club who lease part of the land from the Trust, offers a children's play area and free car park.

After seeking initial designs and quotes, the Town Council held a consultation event with the preferred bidder and the public which helped finalise the apparatus to be included. A 40m running track, seven exercise stations and a "boot camp" workout frame were included in the final design. Two of the stations are inclusive in their design, allowing wheelchair users to take advantage of the facility which is easily accessible via a level tarmac path from the car park. A submission to B&NES Council for S106 funds was successful and the project was completed in May 2016.

Most of the current use is by individuals who may not have joined a formal Gym Club but want to improve their fitness. In addition, the Town Council has made the facility available to organised groups who will be charged a modest fee for access. Each station has a unique QR code attached along with basic instructions for use. Accessing the QR Code downloads a complete video showing how to use the equipment which is based on weight resistance rather than hydraulics, reducing the maintenance burden and ensuring that it can be used safely by anyone over the age of 14.

Project Delivered 2016



Outdoor Gym

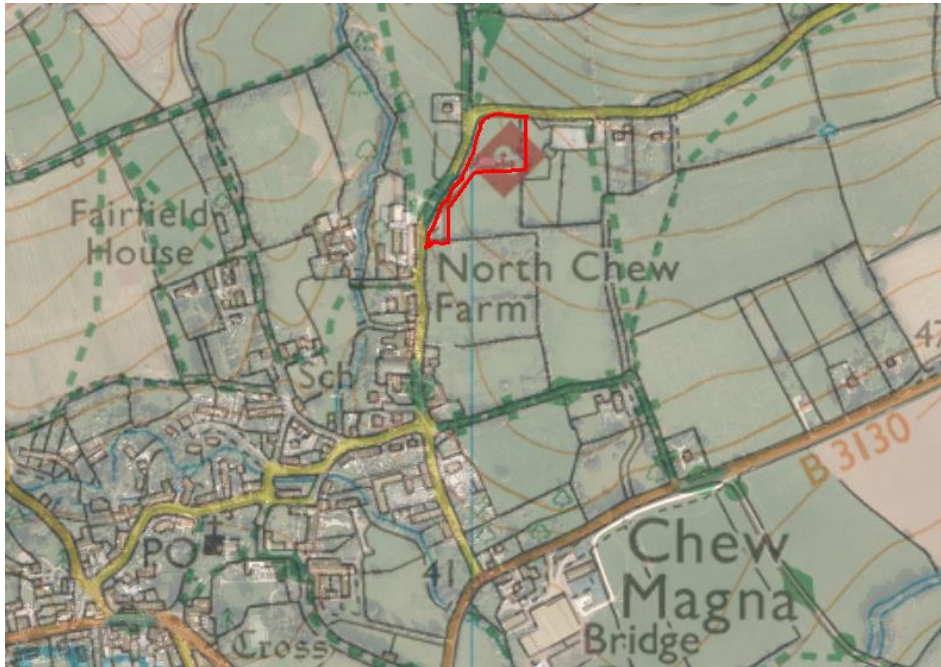


Running track



Information panels

Case Study 4: Chew Magna King George V Playing Field



OS Grid Ref: 358,061m,
163,737m

Partners:



Project Summary

The proposal is to provide a modern, safe and pleasant play area that will be more extensively used by the local community.

The key features of the proposed development are;

- Replacement of the existing children's play area with a new bespoke multi-play design
- Inclusion of a 'Nest Swing' suitable for young children and disabled children
- Replacement of wet-pour surface and new layout to ensure the complete play area complies with latest safety standards
- Picnic area for use by all age groups to encourage greater use of area
- Development of a 'Nature' area for use by the local primary school



The Neighbourhood Plan Community Vision:



Facilities - maintain and enhance good quality, accessible facilities, including community, leisure and recreational facilities, such as local pubs and shops, thus ensuring that the diverse economic and social vitality is sustained and enhanced. This must be in keeping with the character and distinctiveness of the seven parishes.

Policy BF3a Enhancing Community Facilities

The Neighbourhood Plan will support planning applications to upgrade or replace any of the community facilities within the Plan Area, subject to it not interfering with any existing ecological function on or near the site.

Consultation & Quotes

The parish council has undertaken an extensive survey with the local primary school and children's groups including Chew Mums social media site to understand the needs of the village. In total they have received around 100 responses.

"The King George V playing fields in Chew Magna is the main 'Green Space' area in the village but its use has been declining in recent years. "

"Play equipment does not meet the latest safety standards "

Chew Mums



Project Design Concept

Playgrounds for Learning & Fun

Chew Magna Parish Council



Lessons learnt

- Support from local partnerships to help with consultation, delivery and design processes on the ground is invaluable
- The approach to community design works in areas that have built capacity and consensus via Neighbourhood Planning and that have clear community priorities
- Communities need support with procurement and concept development to get multi-benefits
- Capturing the projects as case studies is a useful exercise for reflection and can be used to celebrate achievements of the volunteers involved
- Volunteer hours is a major resource, and can help sustainable maintenance of community assets (taking pressure off stretched Council maintenance budgets), but community design requires up-front investment of officer time.

Thank you!

To DCLG for this grant which enabled us to increase B&NES Council support to these projects, prepare case studies and disseminate this learning.