



JOINTLY OWNED BY



HM Treasury



# Renewables Energy Good Practice Guide

Jo Wall

[Jo.wall@localpartnerships.gov.uk](mailto:Jo.wall@localpartnerships.gov.uk)

07770 702 386

21<sup>st</sup> November 2023





JOINTLY OWNED BY



**Local Partnerships is a joint venture between the Local Government Association, HM Treasury and the Welsh Government.**

We work solely for the benefit of the public sector. We bring public and private sector experience that provides **confidence**, **capacity** and **capability**, helping councils achieve and maintain financial resilience.

**Climate Commercial Place**



**Jo Wall, Senior Strategy Director**



# Background

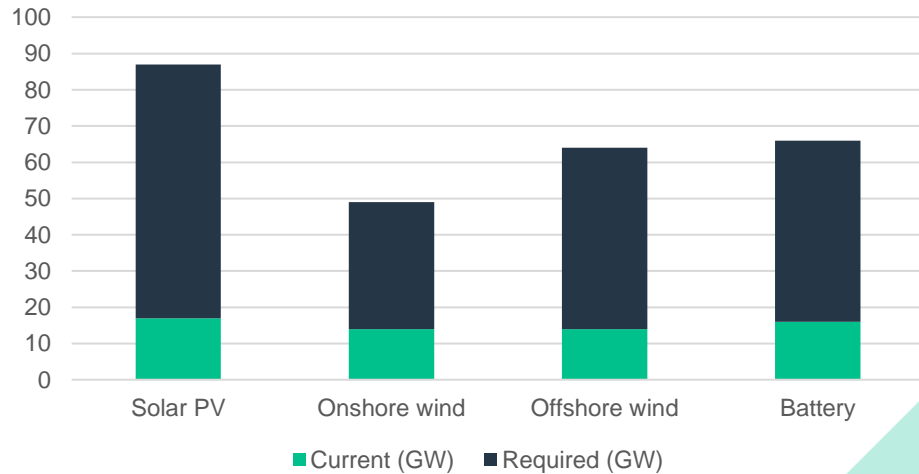
Increasing scale and pace – for some...

Targets to meet net zero – significant increases across all technologies by 2035

Industry trends towards larger scale schemes to cover costs of larger grid connections

Larger applications considered through the Nationally Significant Infrastructure Projects process

Existing v required capacity



# Who has done this before?

## Wide range of commercial investors



PRUDENTIAL



lightsource bp



## Local Authorities and public bodies



Cambridgeshire  
County Council



CARDIFF  
CAERDYDD

WARRINGTON  
Borough Council



GIG  
CYMRU  
NHS  
WALES

Bwrdd Iechyd Prifysgol  
Abertawe Bro Morgannwg  
University Health Board



Leicestershire  
County Council

West Suffolk  
Council



# Wind, solar or something different?

## Development context

- Wind
- Solar PV and battery storage have better recent planning history
- Increasing community pushback
- 
- Community benefits



# Tech Basics

## Solar PV

- Predictable power production
- Lengthy component guarantees

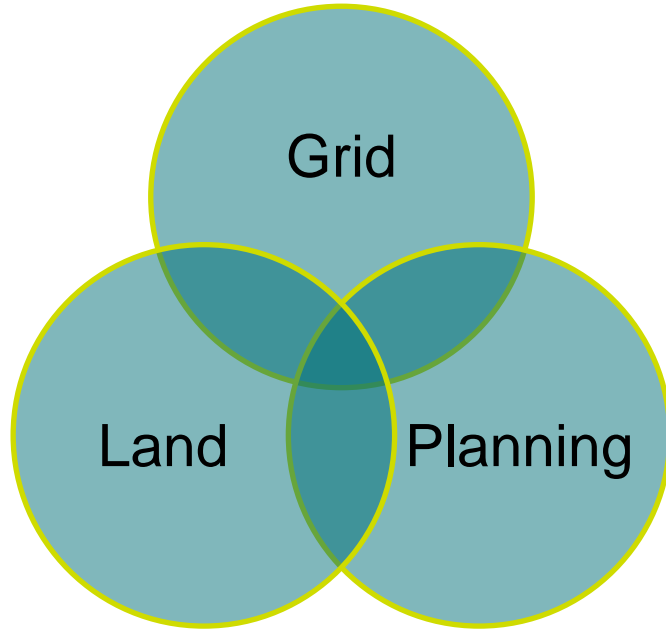
## Battery storage

- Less certain revenues
- Lengthy component guarantees, with a need for periodic repowering
- May need an aggregator

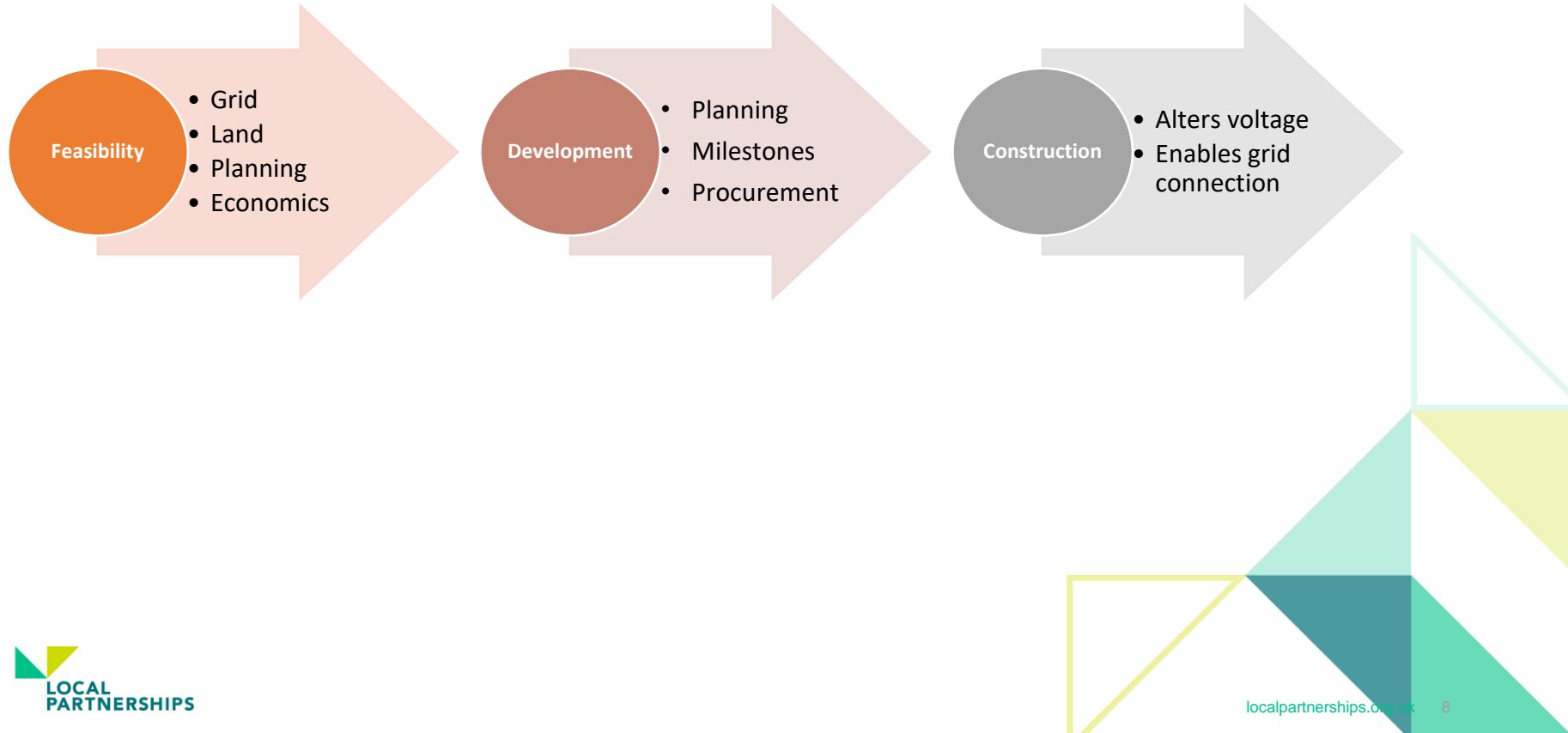


# Develop or acquire?

What are your options?



# Development Process





# Development process – grid connections

## Connections and alternatives

**ofgem**

About us

Information for  
consumers

Environmental  
and social  
schemes

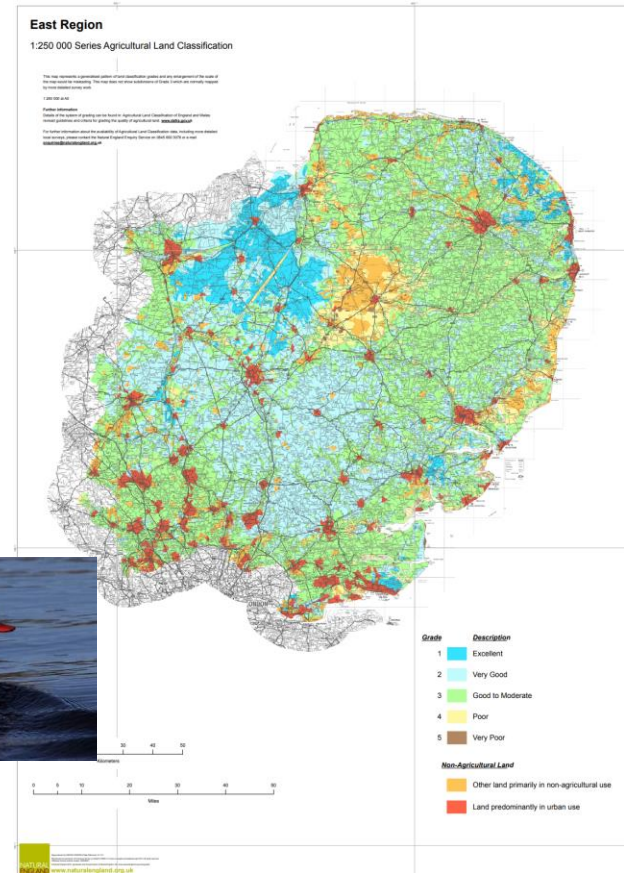
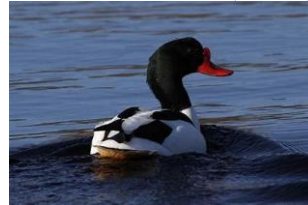
Energy policy  
and regulation

### Ofgem announces tough new policy to clear ‘zombie projects’ and cut waiting time for energy grid connection

Press release



# Development Process – Ground mount PV and battery



# Private wires, landfill and rooftop portfolios

Smaller and more complex?

- Landfill presents challenges and benefits
- Power purchase agreements
- Supply licence requirements
- EV charging



# Acquiring assets

- Challenging process
- Need to act quickly
- JVs possible but complicated
- More difficult than it was

WARRINGTON  
Borough Council



# Risks and mitigation





# Financial case

And borrowing

Economics vary and should be monitored regularly

Private wires and direct connections

Co-location benefits

PWLB constraints



THANK YOU