

W4. Democratic Accountability in and reform of Local Resilience Forum

Paul Phipps-Williams, Head of Regional Resilience,
Department for Levelling up Housing and Communities

Becky Heginbotham-Blount, Partnership Manager, Suffolk
Local Resilience Forum



Department for Levelling Up,
Housing & Communities

Democratic accountability in, and reform of, Local Resilience Forums

LGA Annual Fire Conference

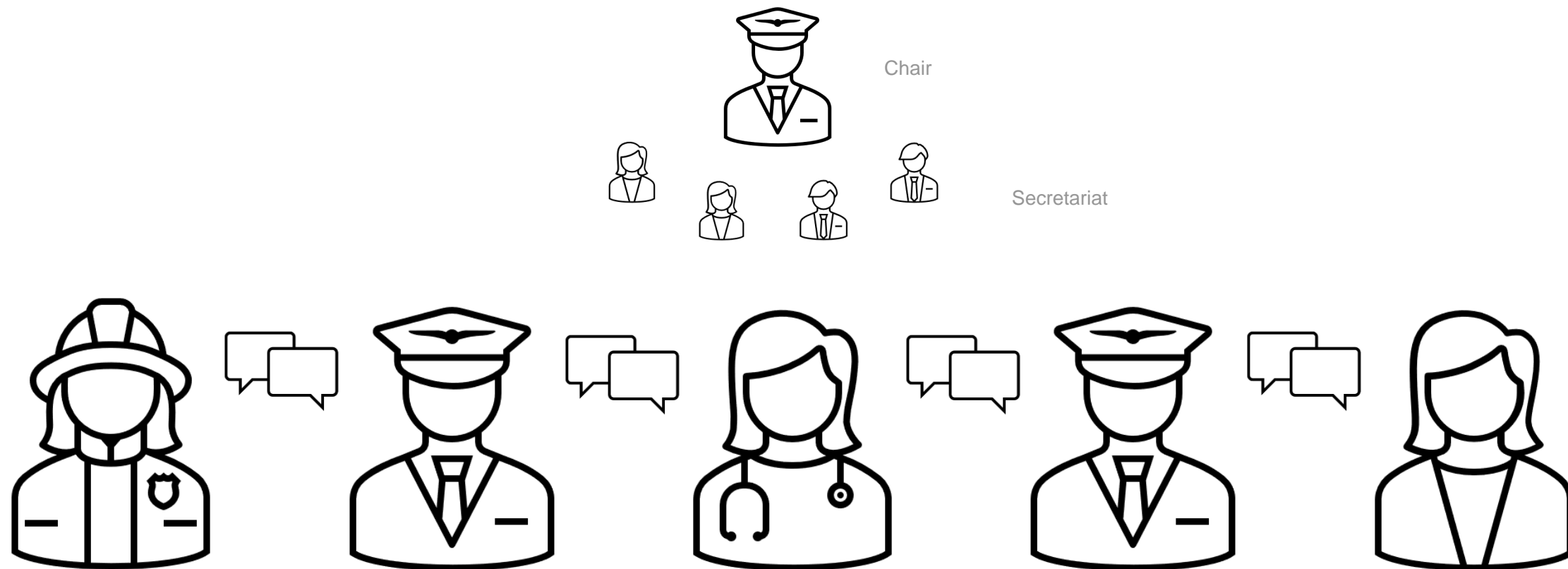
Workshop Four

12th March



What's a Local Resilience Forum?

How responders collaborate and coordinate with each other as they carry out duties in the Civil Contingencies Act

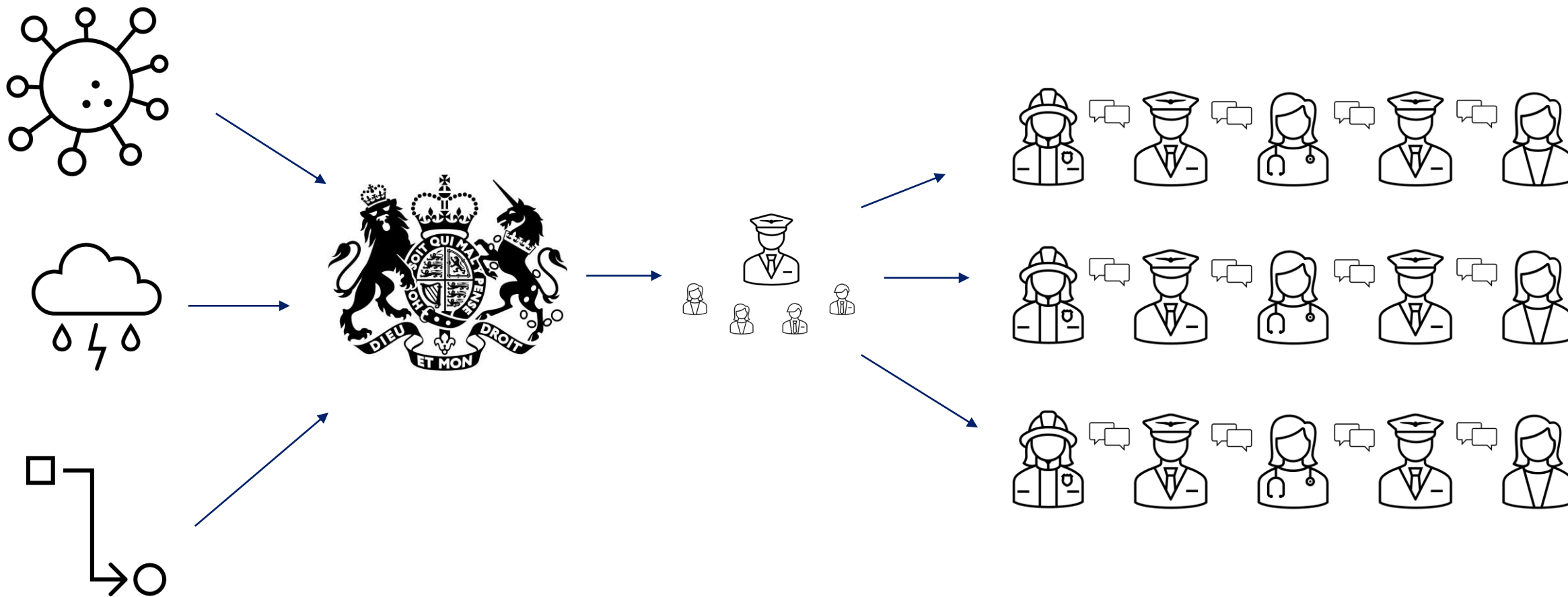


Category 1 and 2 Responders



But expectations have grown

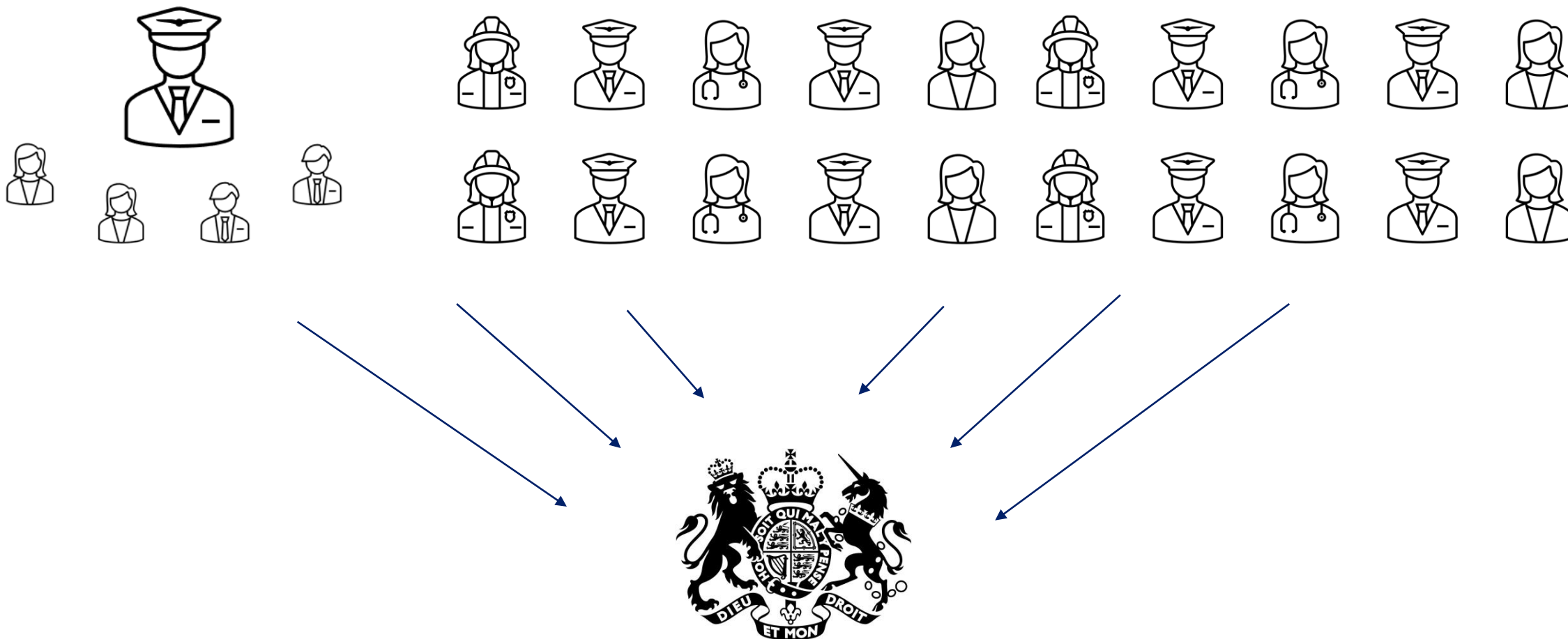
COVID, Severe Weather and our exit from the EU have meant we've asked more of our LRF partners





So, things had to change

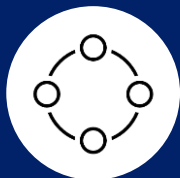
Partners told us we had to strengthen local resilience arrangements – and provide dedicated funding





Stronger Local Resilience Forums

The UKGRF gives firm commitments to enhance local resilience



Core Pillars of the UKGRF

By 2030, the UK will have stronger frameworks, systems and capabilities which underpin our resilience to all civil contingencies risks.

- We will have a shared understanding of the risks we face.
- We will have a greater emphasis on preparing for and preventing emergencies.
- The whole of society will play their part in helping our communities be resilient.



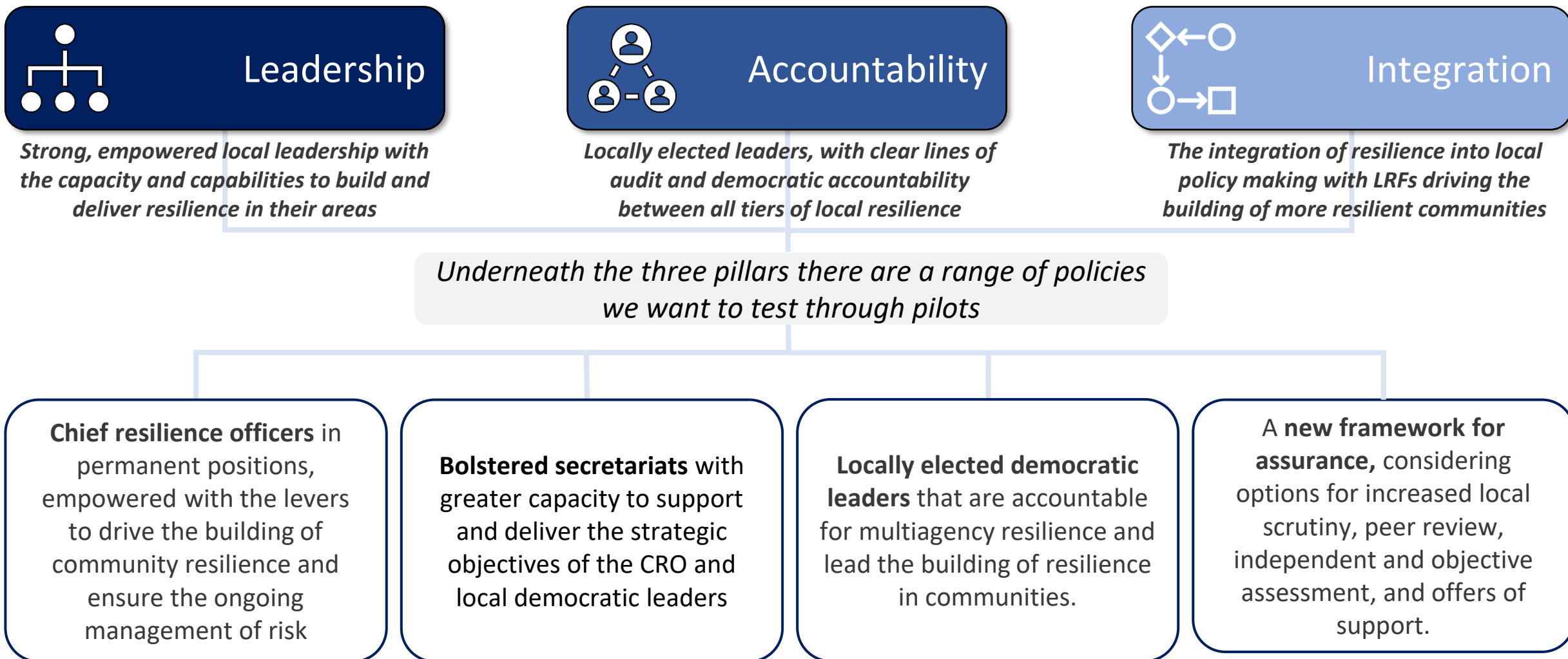
Commitments to strengthen LRFs

- By 2025, we will: run a pilot across three key pillars of reform to significantly strengthen Local Resilience Forums (LRFs) in England: Leadership, Accountability, and Integration of resilience into the UK's levelling up mission.
- By 2030, we will: work across three key pillars of reform to significantly strengthen LRFs in England.



Stronger local resilience – three pillars of reform

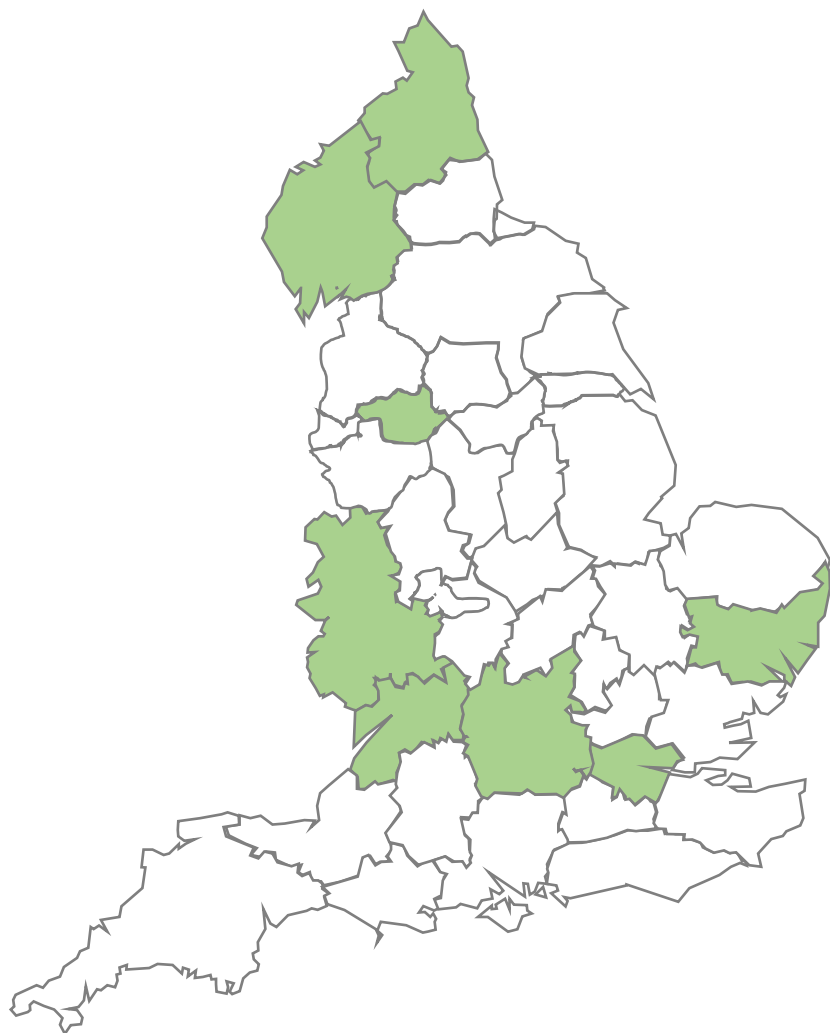
How we'll raise the profile of a place's resilience





Our eight pilots

Each are exploring how they can strengthen their own arrangement

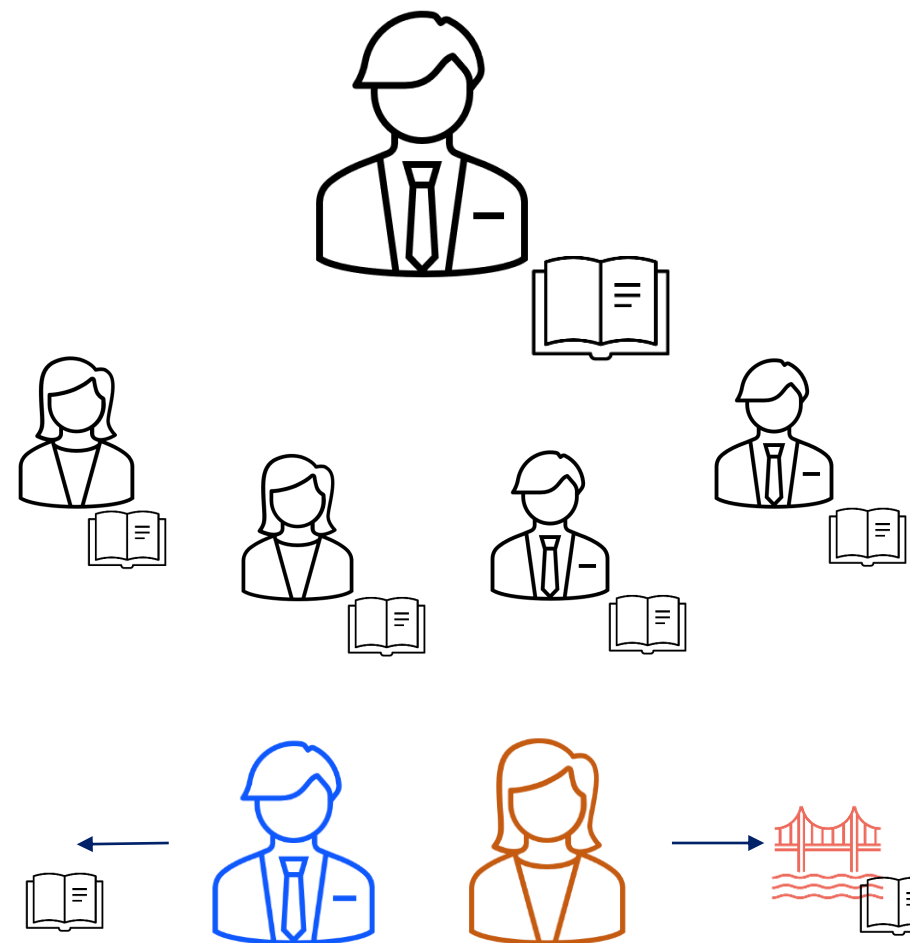
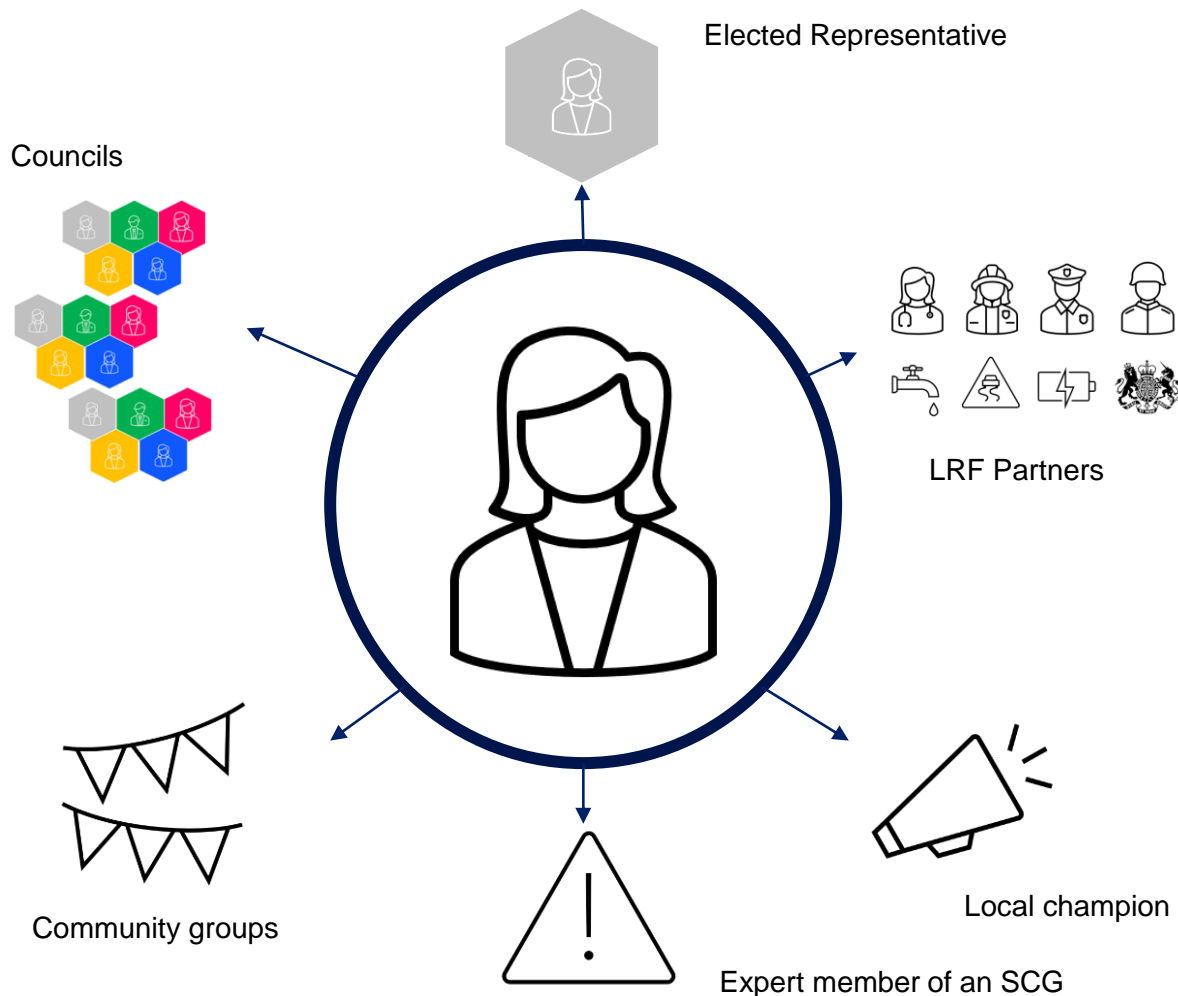


- We have invited eight places to work with us to develop delivery plans between now and Christmas.
- They are Thames Valley, Cumbria, Gloucestershire, West Mercia, Northumbria, Greater Manchester, London and Suffolk.
- They're now working up their plans.



A Chief Resilience Officer and their team

A full-time, senior resilience professional with influence and capacity to get things done



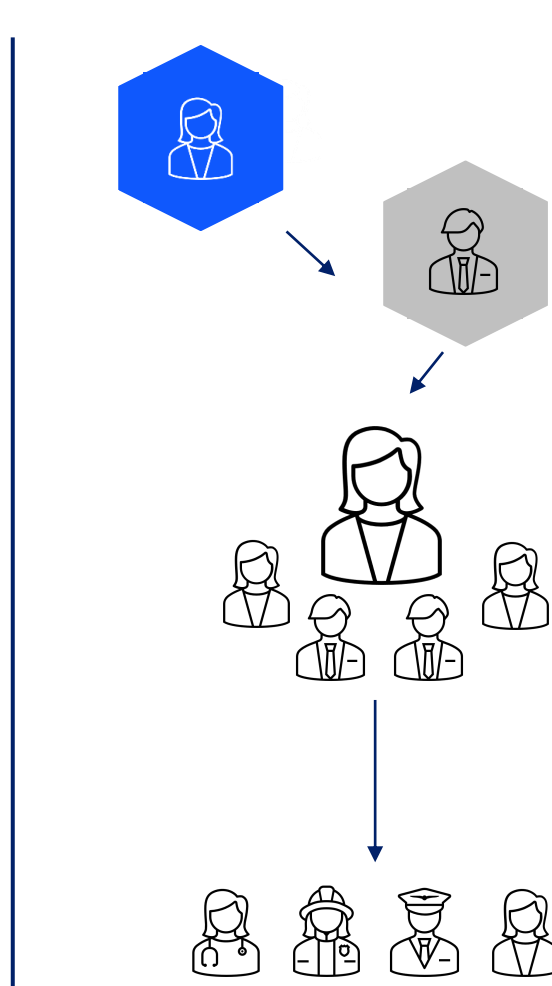
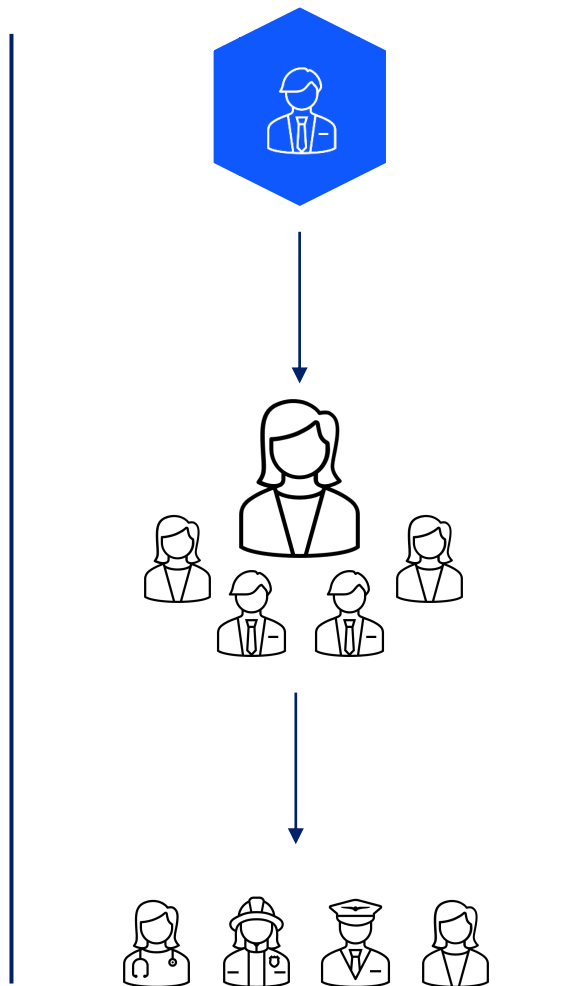
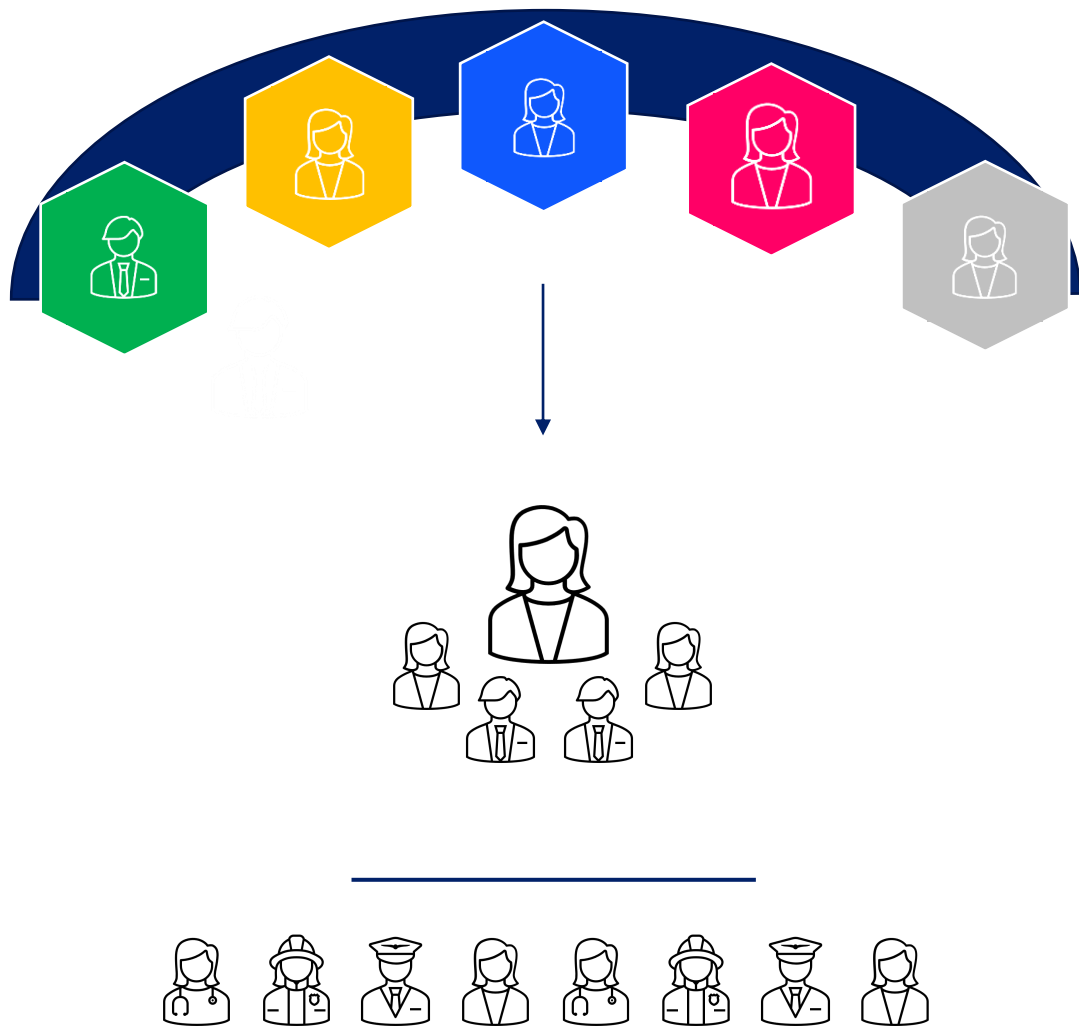
Emergency Planners

Other Specialists



But how does accountability work in practice?

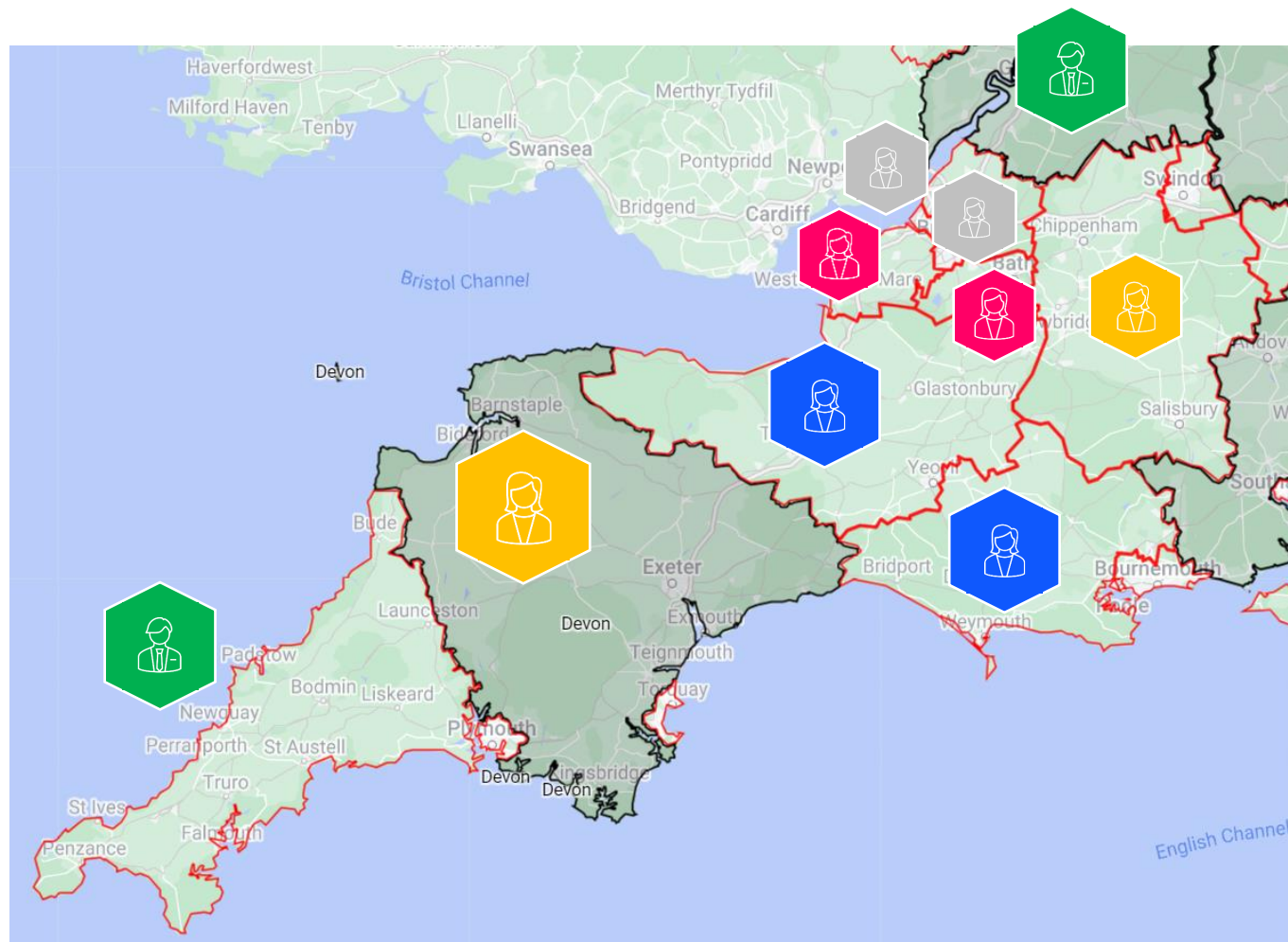
Direct accountability, or a committee style approach?





Strengthened Leadership across Boundaries

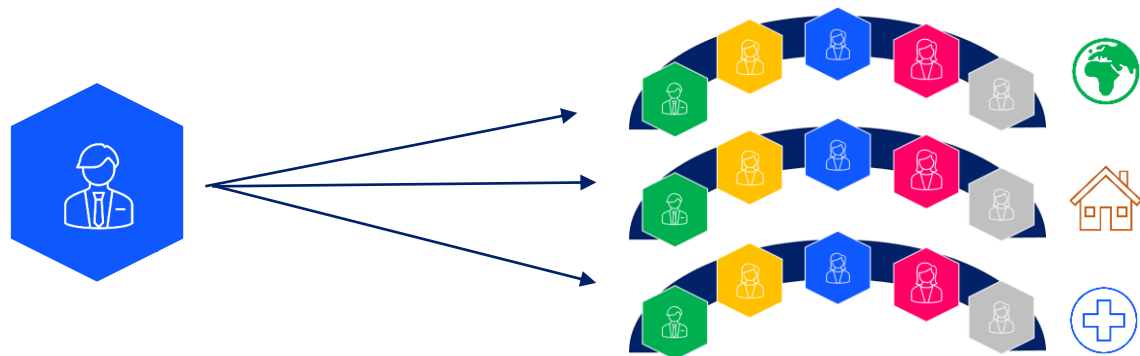
How do we get better at joining up across our boundaries – as the resilience of one impacts all?





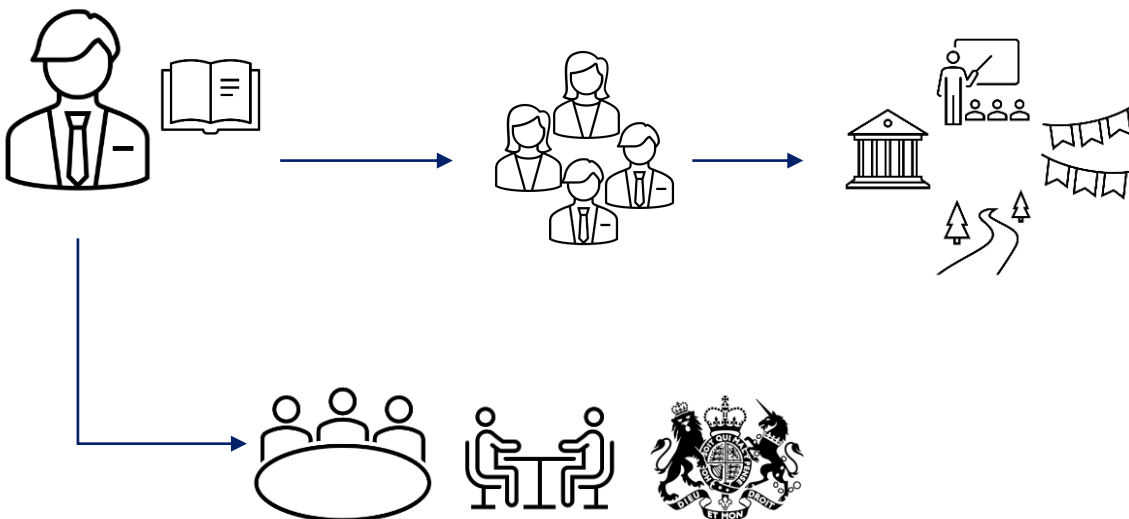
Resilience integrated is Resilience mainstreamed

Taken together, stronger democratic accountability coupled with stronger leadership will make a real difference



One democratic leader, several voices

- Your democratic leader with responsibility for resilience **carries that voice across all committees** on which they sit. The need for preventing emergencies, transparency on risk, and a whole of society approach is **embedded across all local decision-making fora.**



A stronger team that structures itself to deliver local resilience priorities

- Your CRO can pilot a resilience strategy that touches on all aspects of local life, and then structure their team to deliver it.
- This can mean better relationships with local schools, community groups and businesses, creating that **whole of society approach to resilience**, where everyone's aware of their part to play in reducing risk.
- It'll mean more time your CRO has to engage with local organisations and responders who can do more to play their part – and influence the future of the Resilience Framework nationally.



Some questions to consider

How do make the most of the opportunities to add value, prevent emergencies, and help create champions of resilience?

1

Champions

How can we create champions of resilient communities within councils?

2

Prevention

What can we learn from FRS' experience in making 'prevention' a normal part of every day life?

3

Making Resilience Mainstream

How can we help local leaders link actions to increase resilience and their wider priorities to secure jobs / protect the environment / help communities?



Suffolk Stronger LRF Pilot LGA Annual Fire Conference

Becky Heginbotham-Blount LRF Manager

Suffolk 
Prepared



Local 
Government
Association

What is Resilience?

“The capacity of individuals, communities, institutions, businesses and systems to survive, adapt and grow no matter what kinds of chronic stresses and acute shocks they experience.”

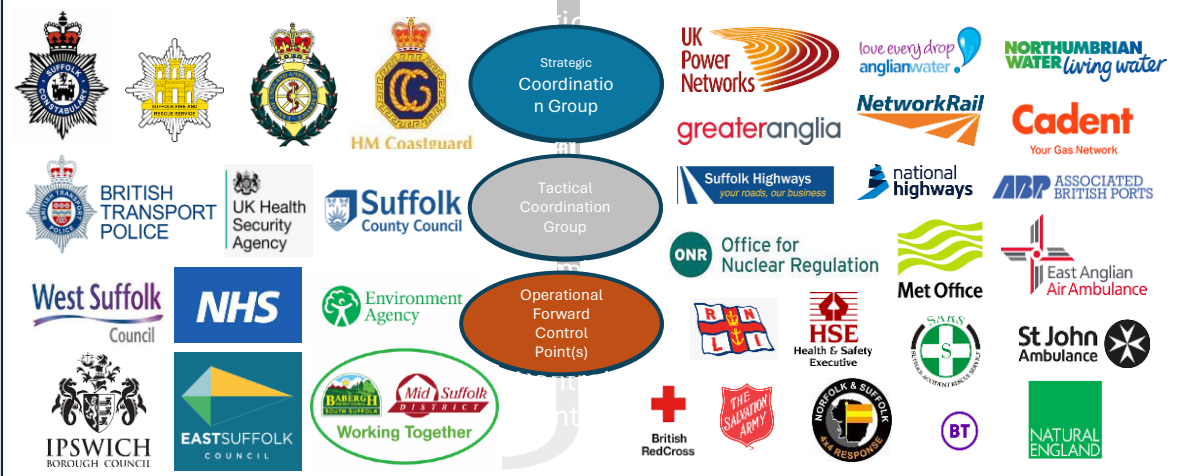
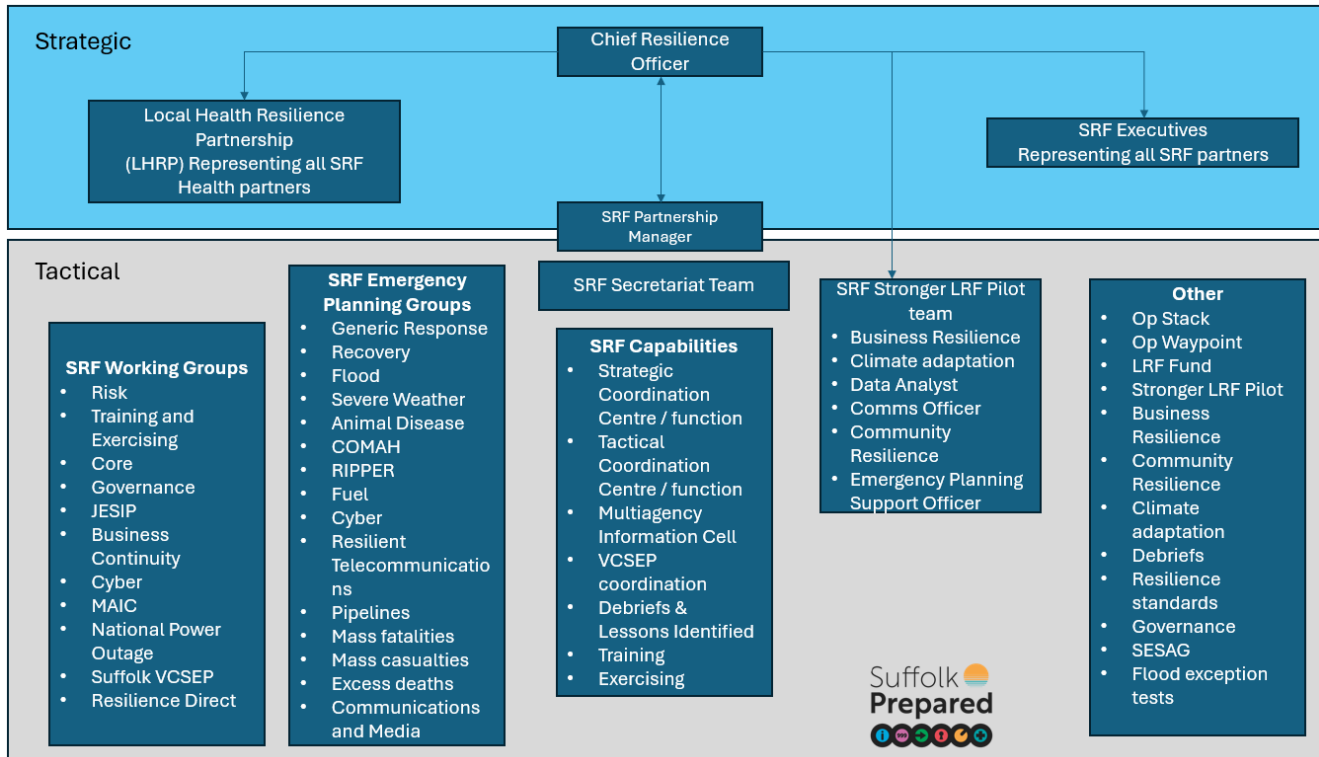
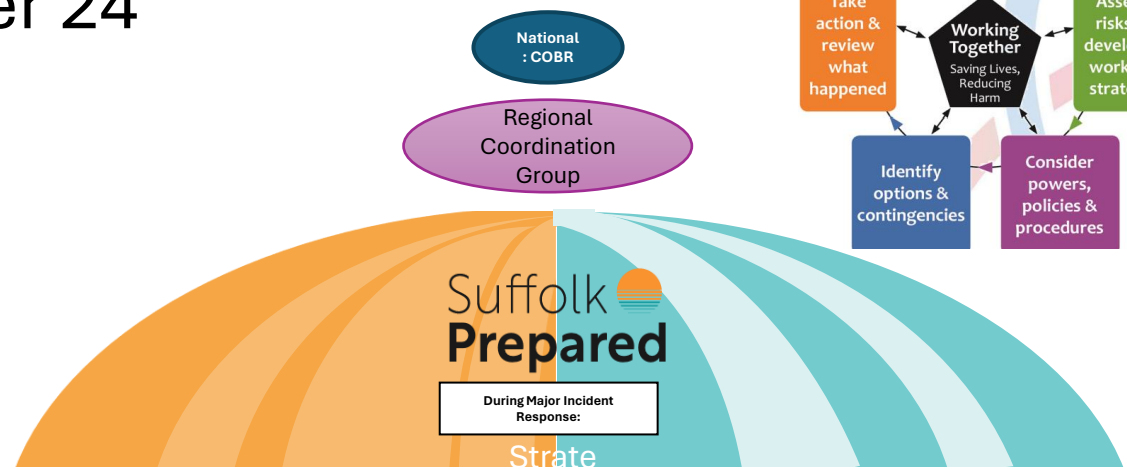
(100 Resilient Cities cited in Greater Manchester Resilience Strategy, 2021)

Suffolk 
Prepared



Context in Suffolk

- Engagement Working on Wednesdays
- 3 x Executive Members Meetings
- Stronger LRF Pilot commence September 24



Stronger LRF Programme

8 Local Resilience Forums selected to pilot the Department of Levelling Up Housing and Communities ambition to strengthen LRFs under the 3 pillars

- Leadership
- Accountability
- Integration



What changes are likely to happen to the forum?

- Funded over 2 years
- New Chief Resilience Officer role
- New accountability framework to elected officials
- Locally agreed resilience strategy
- Enhanced team to support Chief Resilience Officer and pilot
- Plugging into the Suffolk system



Prevent

- Community Resilience **engagement**
- **Education**
- **Business Engagement**

Prepare

- Emergency Plans
- Community Risk Register
- Training & Exercising
- **Climate adaptation**

Respond

- Strategic & Tactical Coordination Centres & Groups
- Multi Agency Information Cell

Recover

- Recovery Coordination & planning
- Debriefing & learning
- **Political engagement**



Suffolk Local Resilience Strategy Framework



Three Core Principles

01 Understand the risks we face

Risk & capabilities matrix developed with enhanced staff & SODA support. Engagement with business sector; climate change partnership; Collaborative Communities Board; Safer Stronger Communities Board
Investment in Multi-Agency Information Cell

02 Prevention rather than cure

Prevention workstreams supported by Communications Officer, Communities Officer, Climate Change Partnership and Business Engagement.
Enhanced community engagement and explore education.

03 A whole of society approach

Through Suffolk Voluntary Community Sector Emergency Partnership supported by the Communities Officer, Communications Officer and Partnership Manager. Attendance at SPSL, SCOLT subgroups.
Linked into local, regional and national groups such as National Consortium of Societal Resilience, Communities National Prepared Group.

Six Themes

Communities

Risk

Leadership, Responsibilities and accountability

Place: Business, Climate & Funding

Response & Emergency Planning

Learning & Training

Responsibilities and accountability

Investment

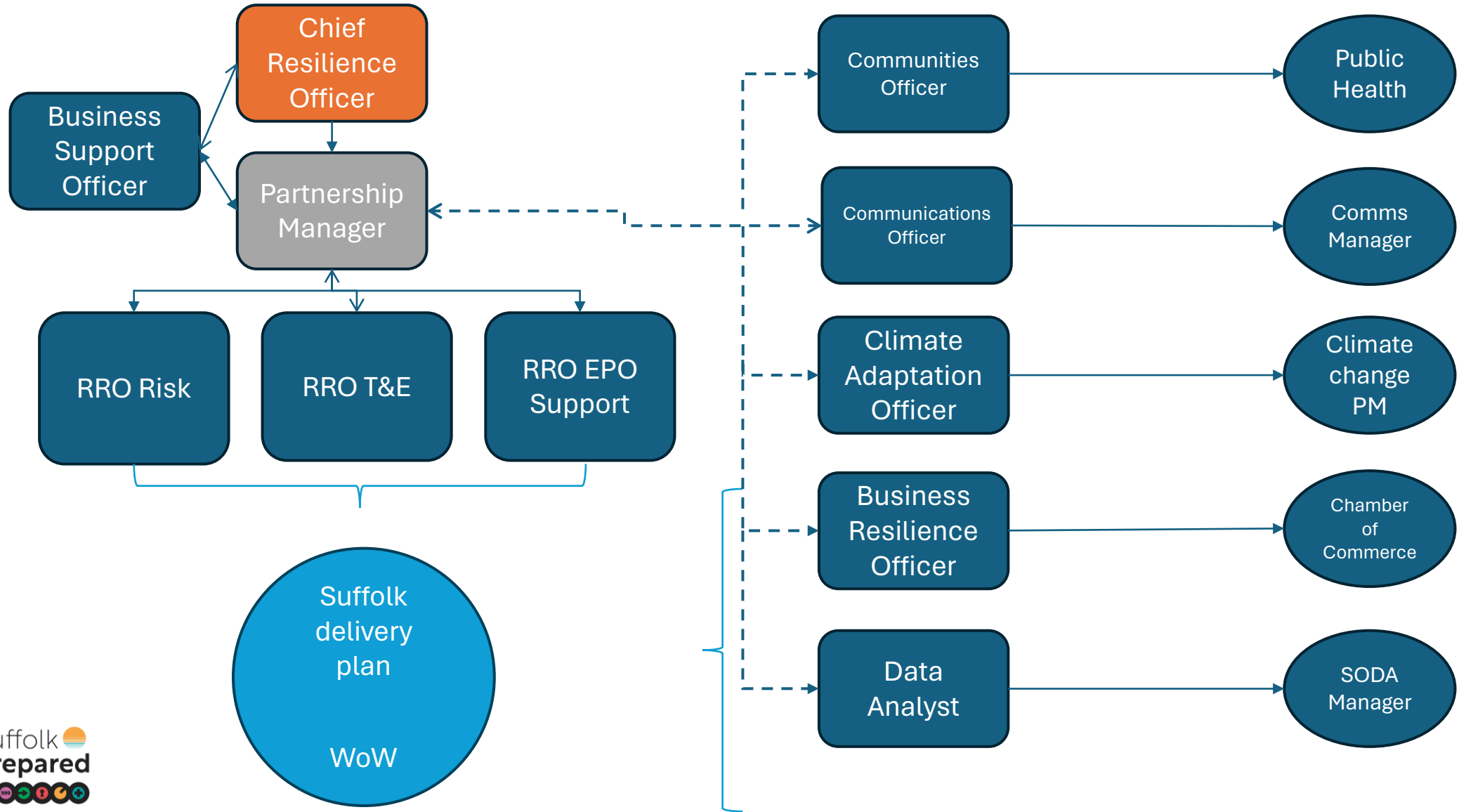
Partnerships

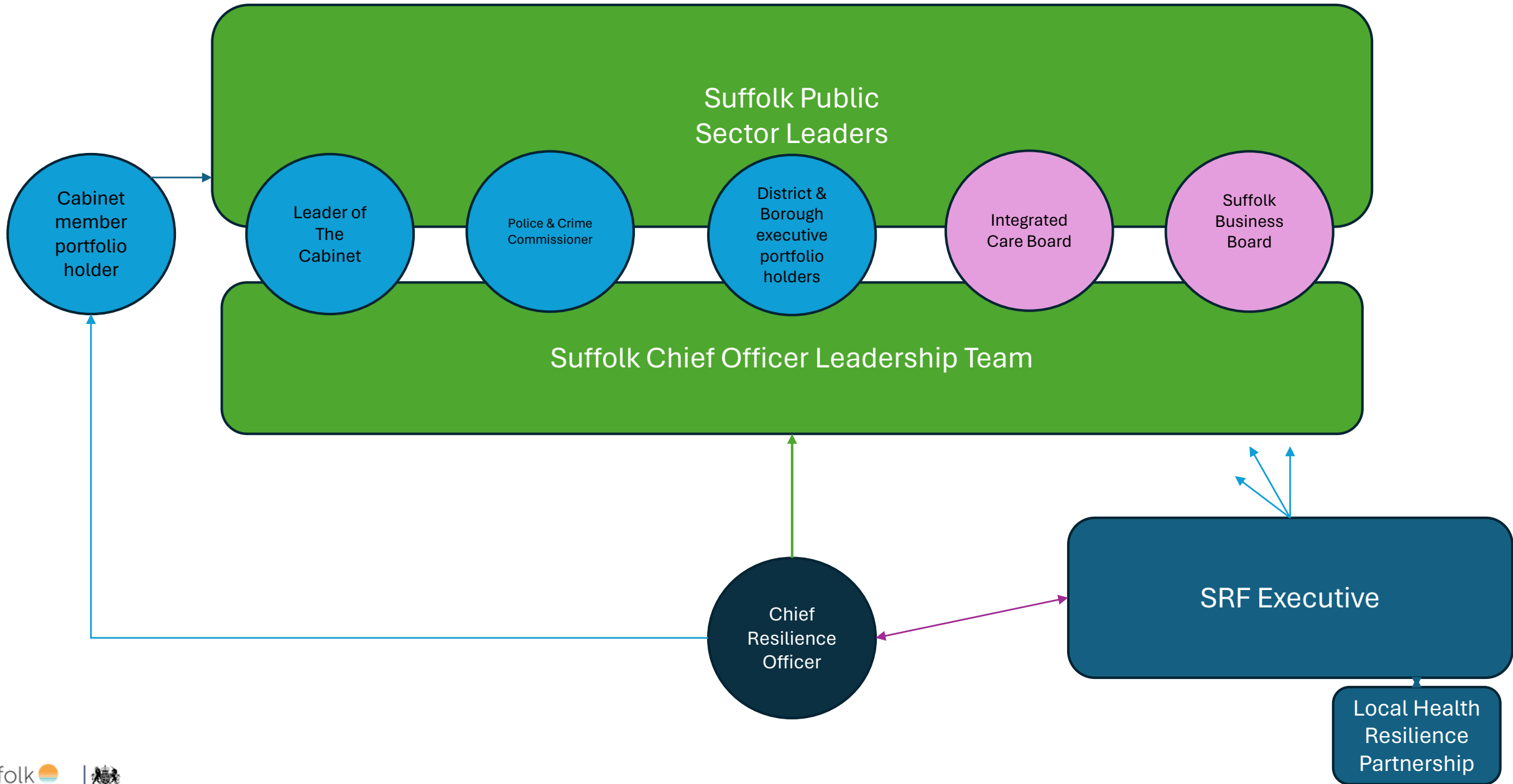
Skills

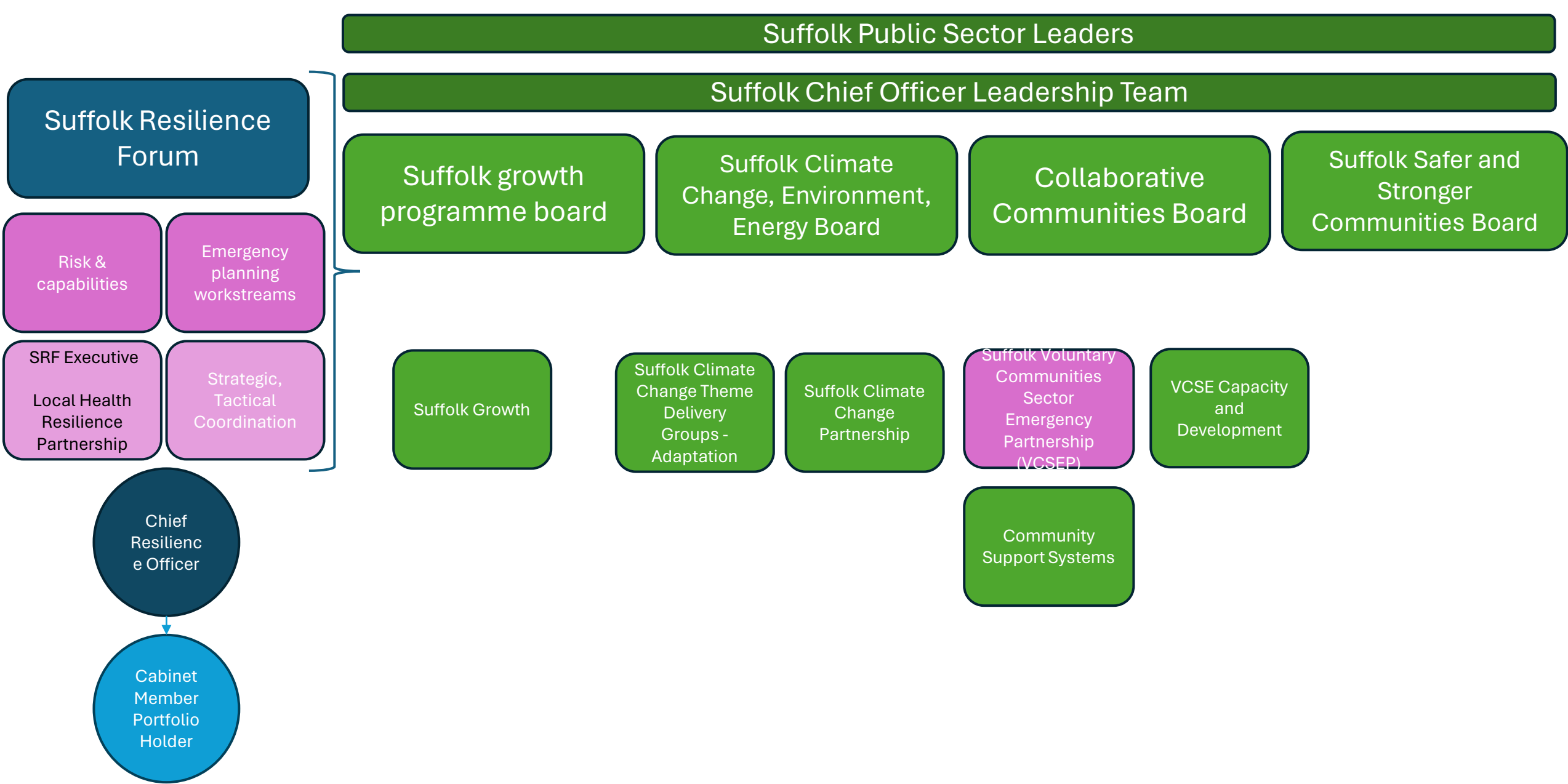
Suffolk Local Resilience Strategy

- Local Resilience Strategy accompanied by an annual SRF Delivery Plan out for consultation
- ❖ Communities
- ❖ Understanding Risks
- ❖ Leadership, responsibilities and accountability
- ❖ Place – business, climate & funding
- ❖ Response & Emergency Planning
- ❖ Learning & Training









Fire & Rescue Service LRF Integration

Via WoW &
executive
meetings
and
response
structure

Risk
Emergency Planning
Training & exercising

SLRF Pilot
enhanced
integration
via

Communities working group
Voluntary Community Sector Emergencies
Partnership
Preparedness campaigns
Business engagement
Suffolk data & dashboards
Data for Community Risk Management Plan

Where is the added value?

- Integration with Suffolk system – Political and other partnerships and departments
- Better engagement with the voluntary sector
- Integration of community resilience incentives from all LRF partners providing a better service to public,
- Use of Suffolk data to contribute to Community Risk Register & capabilities matrix
- Better response structures more resilient LRF capability
- Engagement with business sector around resilience
- Climate adaptation mapping and integration with Suffolk emergency plan
- Preparedness campaign
- Create capacity for partners by centralised team

