

IMPOWER

Inclusive Ambition

JEREMY COOPER

Director,
IMPOWER

PAULINE MELVIN-ANDERSON OBE

Independent Associate,
IMPOWER Consulting and former
Director – Learning, Inclusion and Skills,
Derby City Council

RACHEL RULE

Parent Carer and former Chair of
Derby City Parent Carer Forum

KATE DEXTER

Assistant Director Family Help and
High Needs, Norfolk County Council
Children's Services

SCAN FOR OUR MENTIMETRE



bitly



Norfolk County Council

IMPOWER



Derby City Council

Ambition





Setting a new ambition



Seizing the opportunity

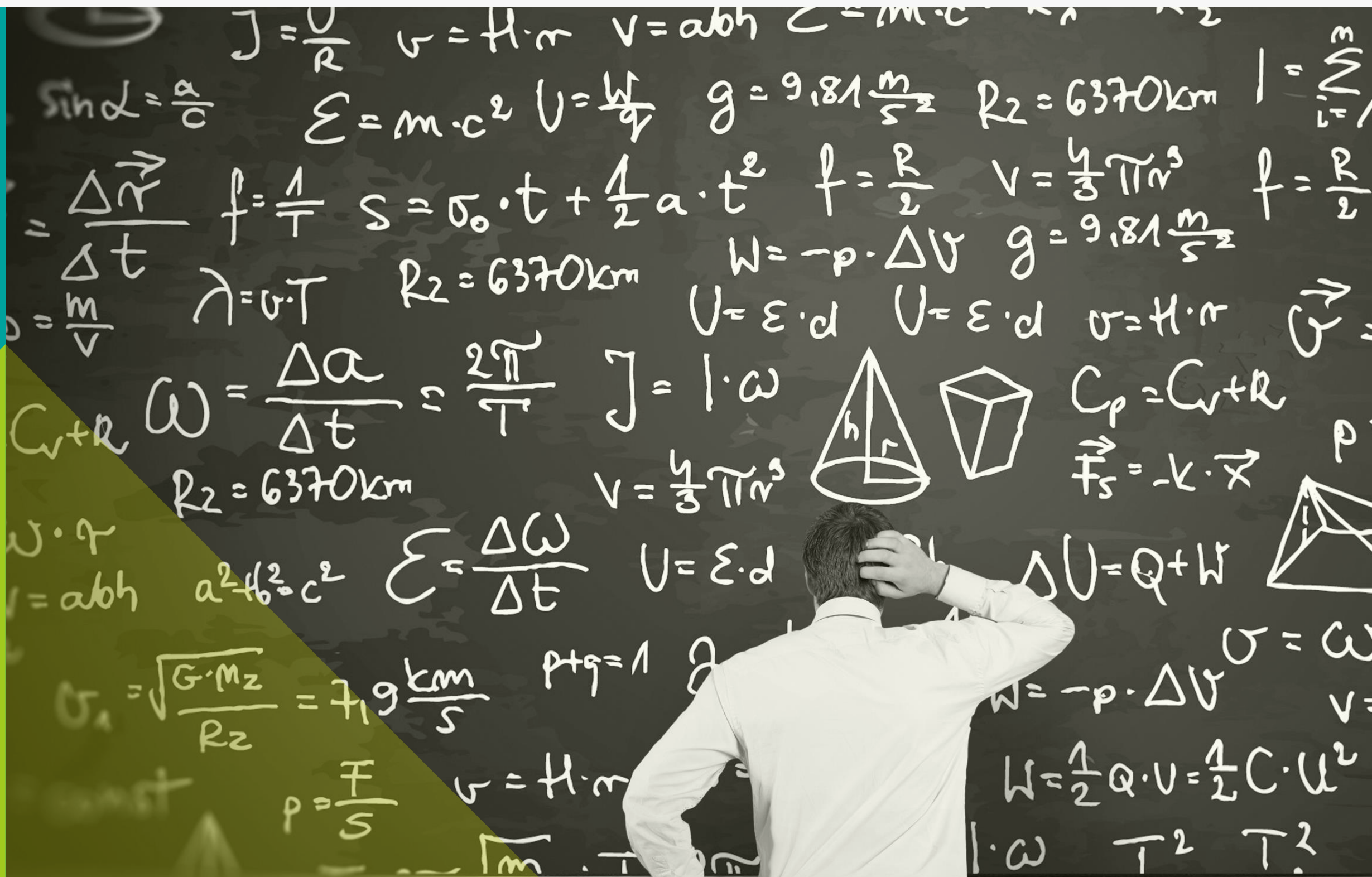


Going big



Resilience

Derby



Setting an inclusive ambition



Parents at Better Together event in Derby



Children from Derby camping

Start small and upscale

DERBY SENCO ADVICE LINE

1225 cases supported between September 2021 and July 2023 through the Derby SAL with **100% positive feedback** from settings.

£92m in anticipated cost avoidance over the next 5 years, without further interventions from April 2023.

17% (207) of calls have focused on the graduated response.

9% (113) have been to signpost to services.

8% (104) about part-time timetables.

Real people, real lives

XANDER

NAS - From a receiver of service to a sharer of asset

INNOVATION CENTRE

“Honestly, it’s been so successful. The staff have become more like friends. We don’t feel judged, they have really broken down barriers.”

AMANDA - Xander’s mum



September 2020



July 2022



Continuous improvement

“ The work over the past few years has established greater resilience and upskilled staff in the local area to work in an innovative and evidence based way make changes that affect real people's lives..”



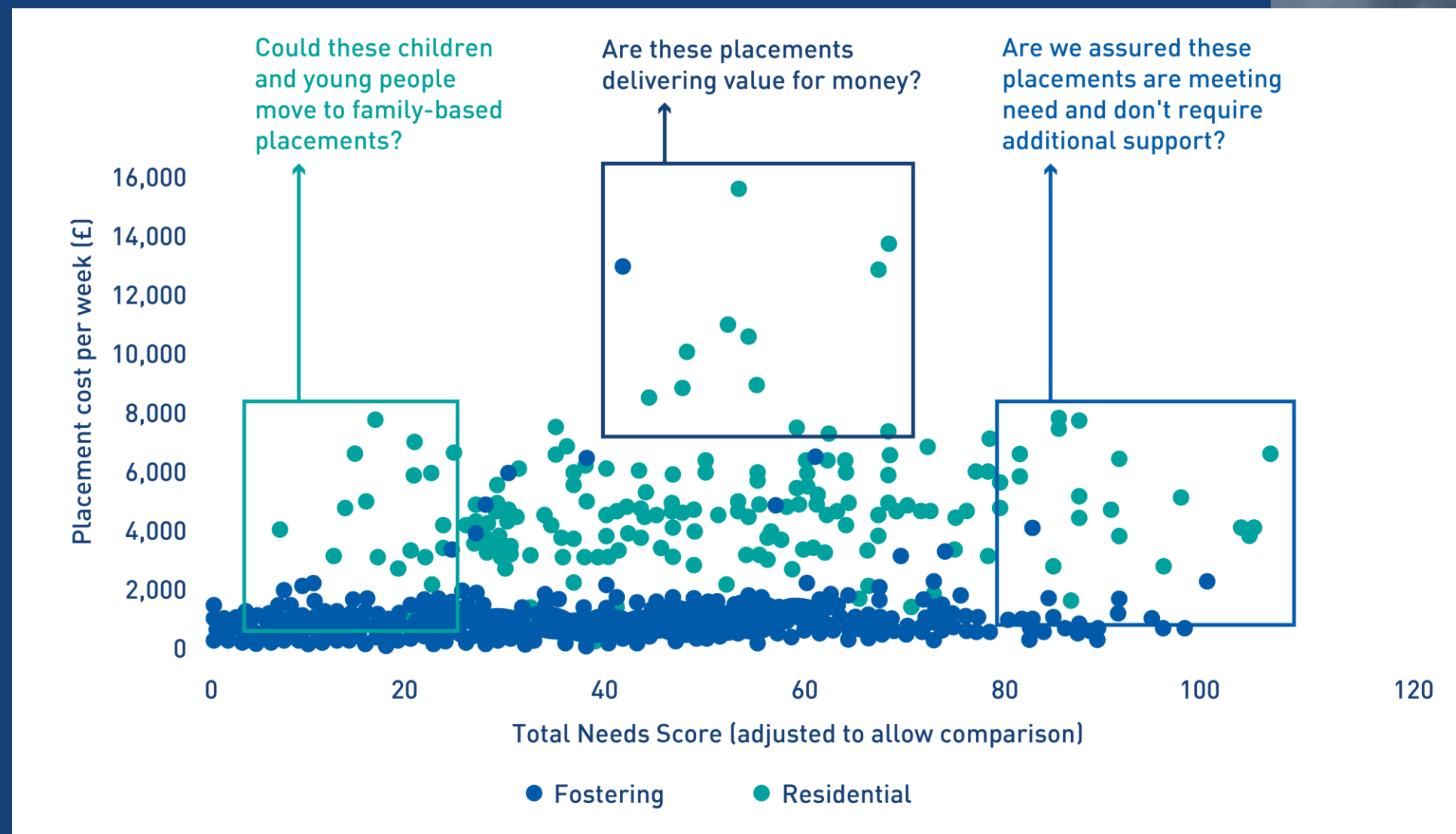
ANDY SMITH - Strategic Director of
People Services, Derby City Council



IMPOWER



Norfolk



Inclusive

AMBITION



Better understanding of needs



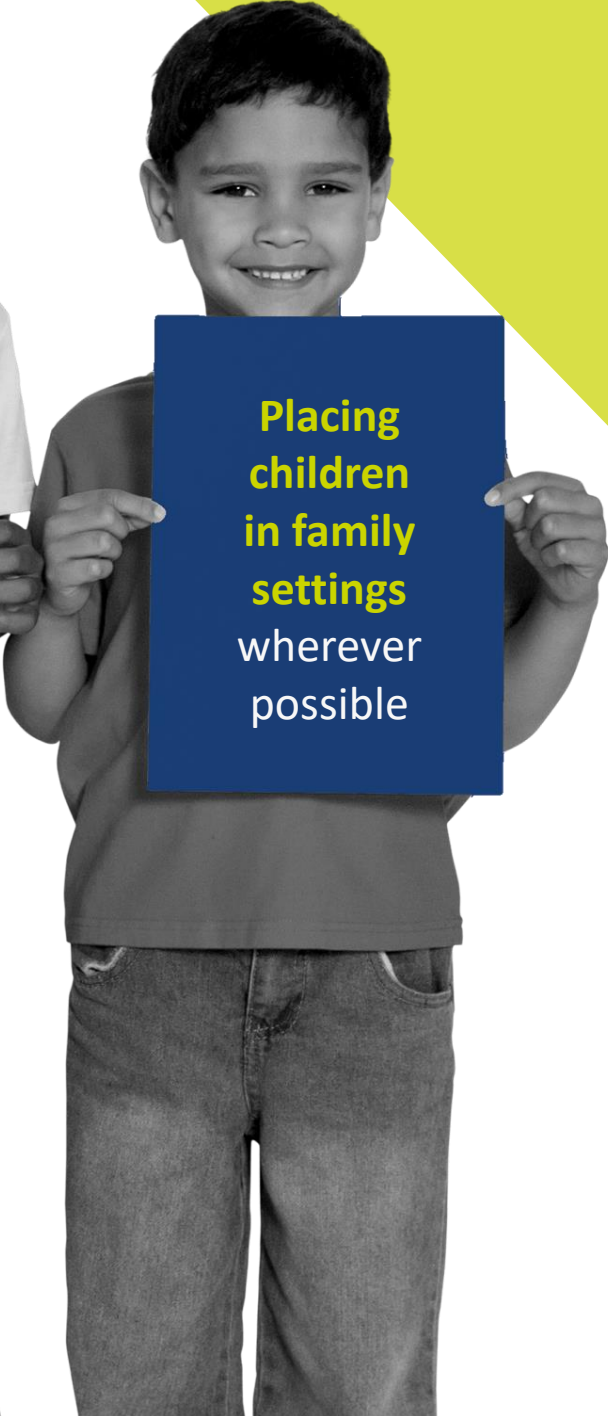
Strengths-based approach to practice and culture



Focus on long term outcomes and life changes



Home finding driven by need

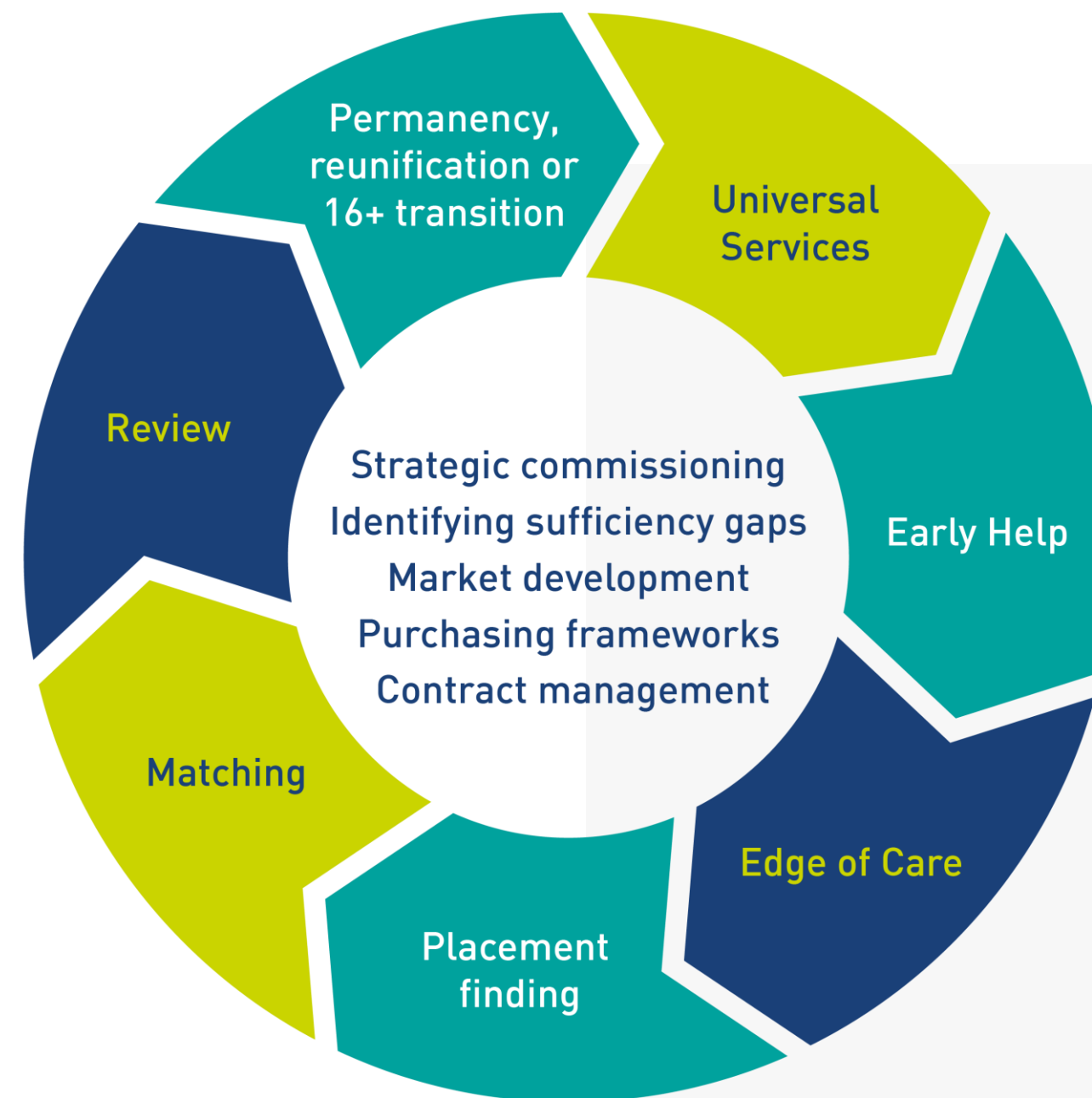


Placing children in family settings wherever possible

Achieving ambition

Average length of **family-based placements** increased by **54%** since 2021

11% reduction in average cost of external fostering placements



14% increase in utilisation of **fostering households**

30% increase in foster carer **capacity** and achieved savings of **over £1.2m**

Some different perspectives

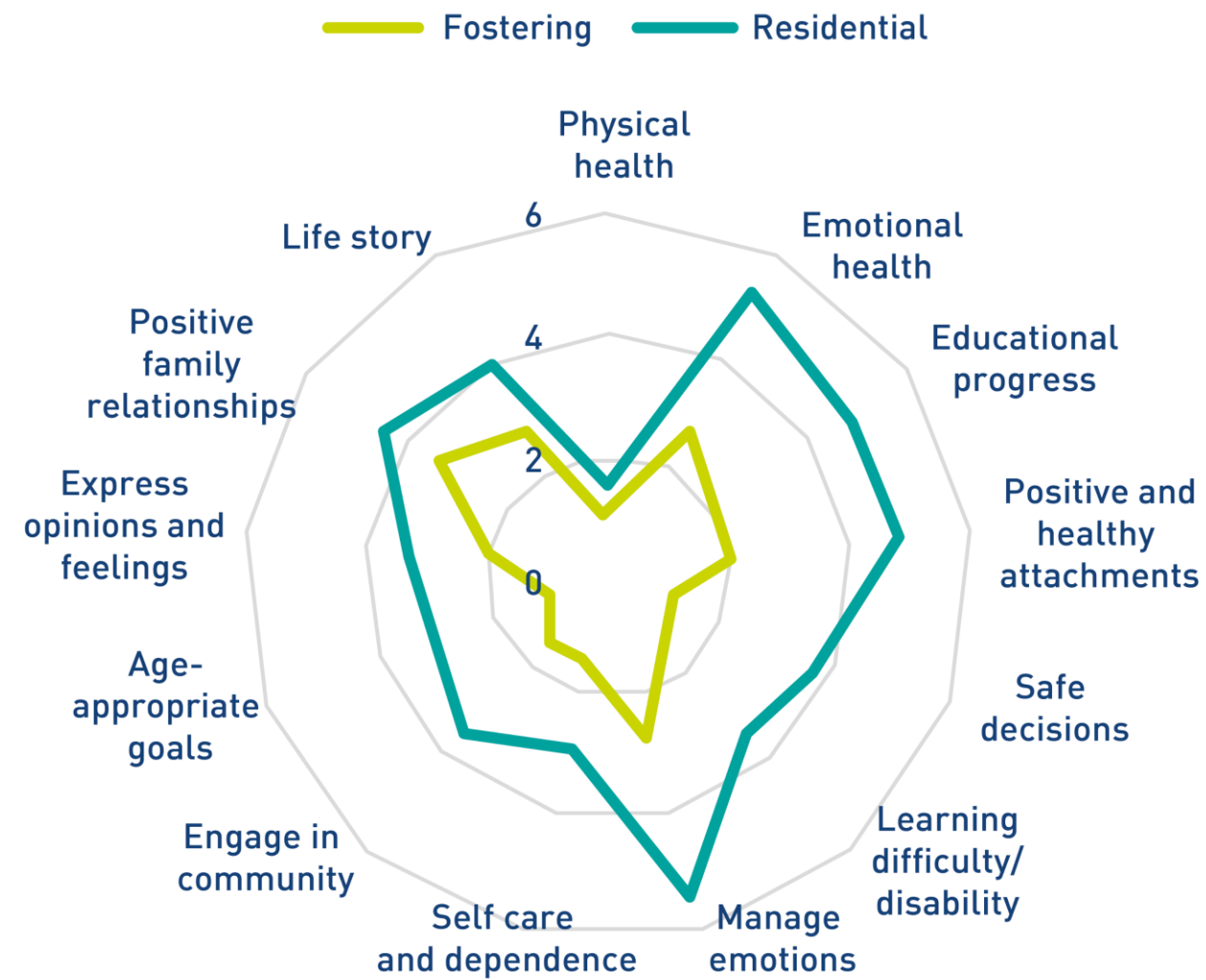


Widening our ambition

- Explore utilising the same approach for residential provision
- Norfolk are proud to take a lead role on how this approach and thinking can help the Eastern Region to respond to our current challenges with care and sufficiency



Widening ambition



Share your experience

SCAN TO GET STARTED



Any questions for our speakers?

JEREMY COOPER

Director,
IMPOWER

PAULINE MELVIN-ANDERSON OBE

Independent Associate,
IMPOWER Consulting and former
Director – Learning, Inclusion and Skills,
Derby City Council

RACHEL RULE

Parent Carer and former Chair of
Derby City Parent Carer Forum

KATE DEXTER

Assistant Director Family Help and
High Needs, Norfolk County Council
Children's Services

Let's continue the conversation...

Visit the IMPOWER stand D20, the Feedback Wall and big chats space.

