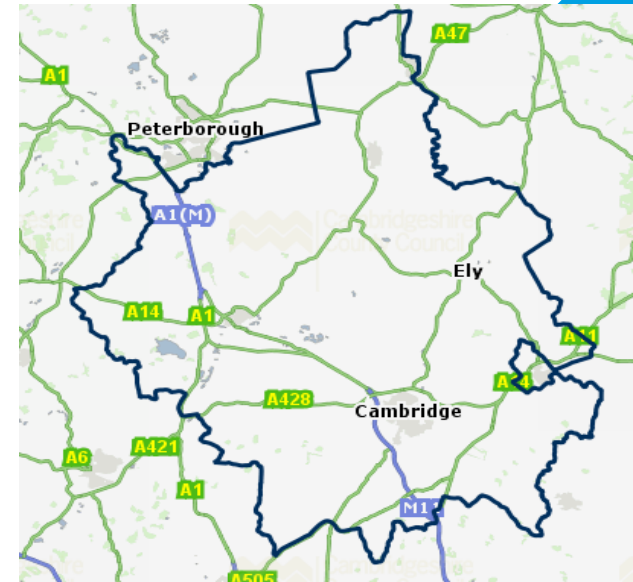


A local perspective on the expansion of Early Years Education and Wraparound Childcare.

Jonathan Lewis – Service Director Education, Cambridgeshire County Council.

Cambridgeshire

- Population of 678,000 (17% 0-14 yrs.)
- 50,973 primary aged children
- 211 primary schools
- Wraparound – 74 school site plus numerous community based
- 746 early years providers
- 13,783 children access early years education



Early Years, Childcare and School Readiness Service

- Part of Education Directorate (0-KS1, EY's and WA)
- Disadvantaged Groups
- Quality Improvement
- Funding and Communications
- Intervention and Safeguarding
- Place Planning – mapping and data

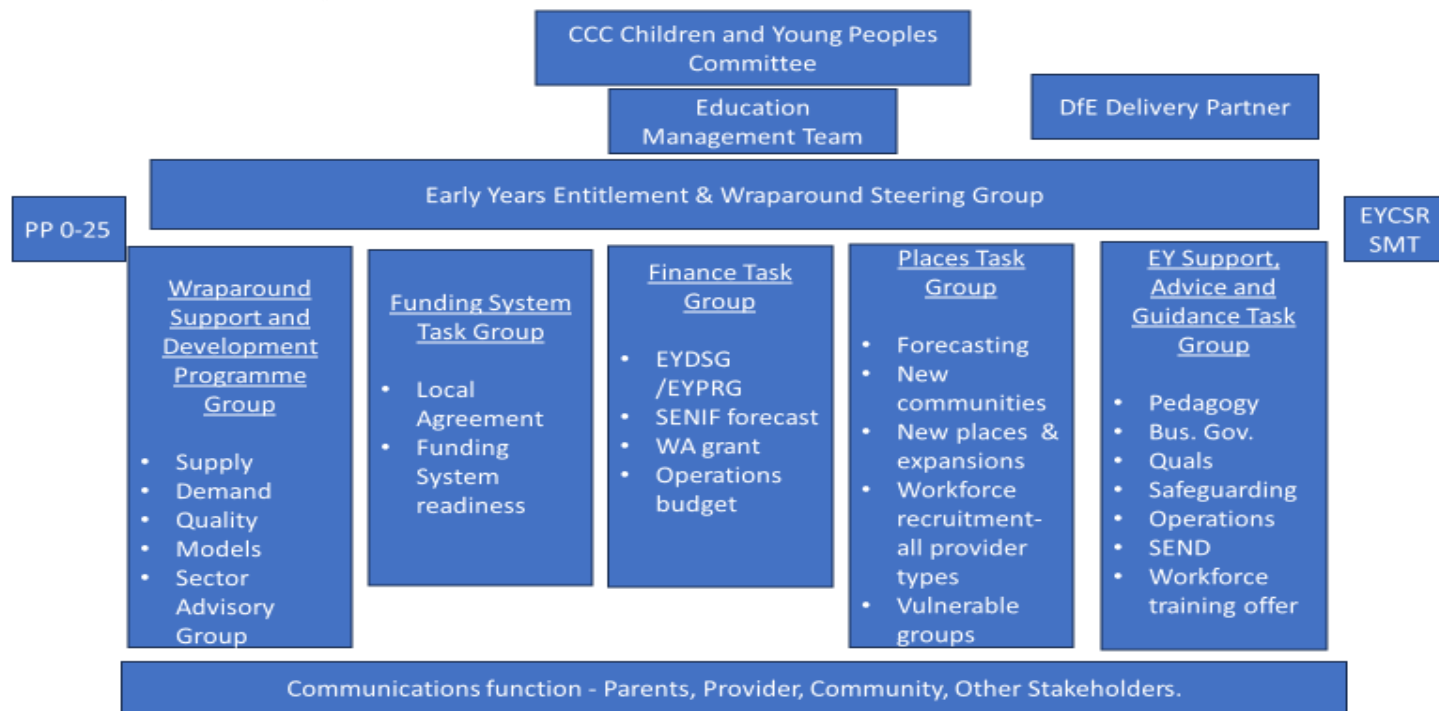
Sector Challenges

- Funding rates and management of funding
- Fluctuating need
- Recruitment into sector
- Increasing children requiring additional support
- Leases, licenses and building costs
- Decrease in childminder numbers
- Impact of large chains

Implementing expansion

- Communication to stakeholder and sector
- Part of DfE EY Policy Group and Wraparound Pathfinder
- Developing Governance model
- Analysing financial implications
- Mapping comparing DfE data with local intelligence
- Building workforce capacity

Functions and Governance



Unanswered questions and challenges

- Demand for take up is not clear
- Will providers expand
- Providers ability to expand
- Unknown – retention rates, hourly funding rate, capital grants
- Temporary grants versus local authority financial pressures
- Support for SEND and other disadvantaged groups
- Impact of ratio changes

Don't lose sight, it is worth it ...

- Economy
- Families
- Children
- Education and wider system
- Sector sustainability
- Communities