

Preparing young people and families for Adulthood

National Children & Adults Services Conference

29th November 2023

Here today



Jenni Collis-Heavens
Head of Service ASC



Helen Wallis
PfA Operations Manager



Aleksandra Zabielska
Service Manager CSC



Lindsey Sloan
SEND Service Manager

Ty



- **Ty is a care experienced young person who lived with foster carers**
- **Supported by our Preparing for Adulthood team, Ty then moved into his own flat with support hours to develop independence**
- **Ty has a diagnosed learning disability and has an Education Health and Care Plan**
- **Ty previously attended mainstream college and is now in one of our newly developed education offers which focusses on preparing young people for adulthood**



Where it began...



CSC

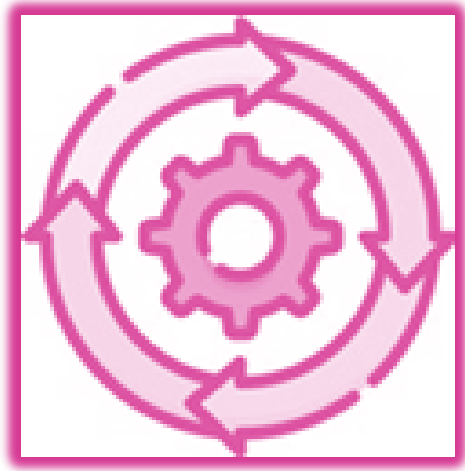
SEND



ASC

What are you trying to achieve?

Challenges



LGR



Priorities



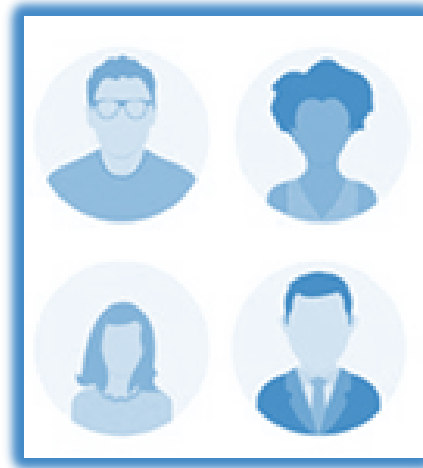
**Commissioning &
Budgets**

What obstacles do you anticipate?

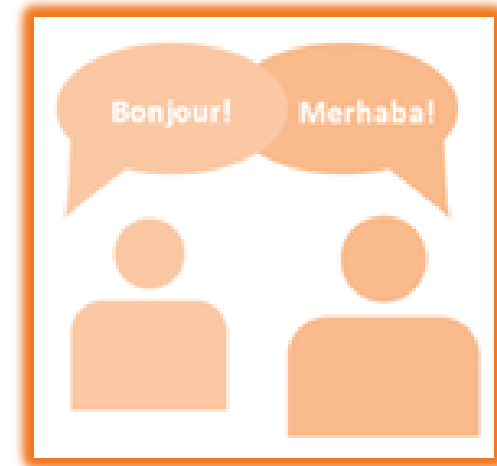
Challenges



Legislation

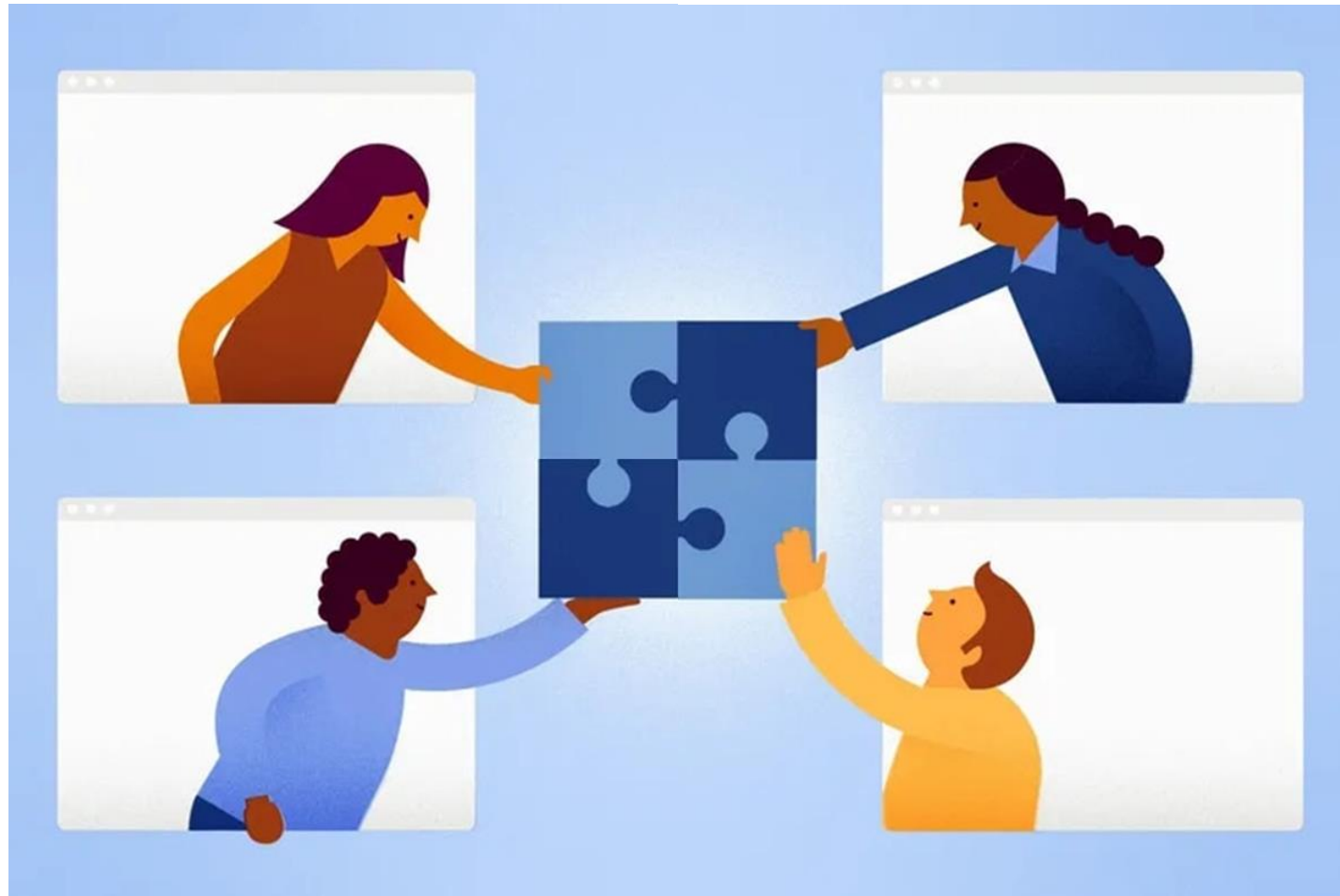


**Roles &
Responsibilities**



**Language &
Terminology**

Co-production



Who might be willing to help you?

Co-production

Strength-Based

Meaningful

Diversity

Equality

Engagement

Accountability

Understanding

Reciprocity

RESPECT

Collaboration

Relationships

WORKING TOGETHER

Strategic Decision Making

Accessibility

Transparent

Emily



- **Emily was a child in care, living in a children's residential home**
- **Emily has an Education Health and Care Plan and attends a specialist provision and they have been supporting her to access a mainstream college**
- **Emily moved into her own flat from the children's home with support hours to help her develop independence**
- **Emily is actively involved in our co-production group across Adults, Children's and SEND services**



Overcoming the Challenges



Legislation



Priorities



**Language &
Terminology**



**Roles &
Responsibilities**



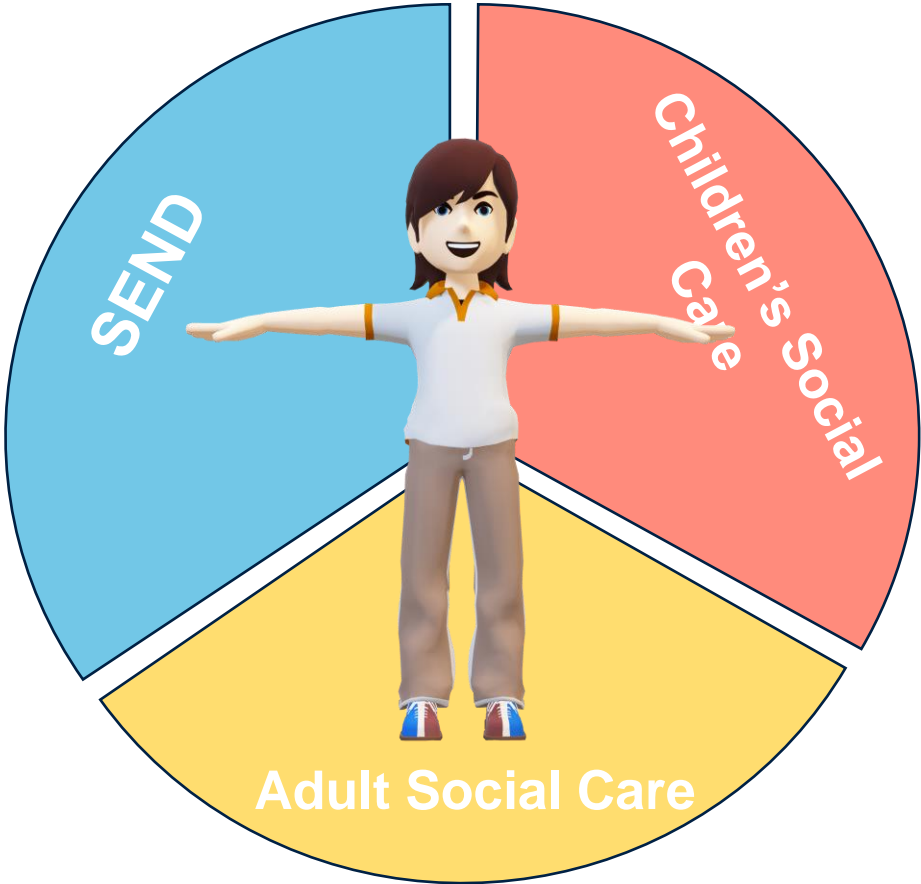
LGR



**Commissioning
& Budgets**

What obstacles do you anticipate?

Overcoming the Challenges



What obstacles do you anticipate?

Where we are now



- Collaborative working
- Better opportunities for young people
- Working with Local Providers to provide a better offer for the Young People of BCP
- In a better position to manage risk
- Using the least restrictive option
- Continuous Learning Development and Growth
- Improved budget management
- Supported internships

What is the difference between how you see things now and how you would like them to be?

Supported Internship



Preparing for Adulthood for children in care

- Some young people are referred to the Transition Planning Group despite not being open to Preparing for Adulthood Team
- 'Care leaver' status is included in protective characteristics
- 333 Hub for Care Experienced Young People
- Joint Housing Protocol is in place that support young people with their housing needs
- BCP's Supported Lodgings is well-established scheme which is managed by an experienced, enthusiastic team and we started a new campaign to recruit supported lodging cares

Preparing for Adulthood Strategy

Our VISION

Caring for our children and young people: providing a nurturing environment, high quality education and great opportunities to grow and flourish

Our MISSION

We have a flexible and aspirational approach to enable every young person's outcome to be personalised

Our PRIORITIES

- There is detailed Preparing for Adulthood information on the Local offer, which is published in a variety of formats, developed collaboratively, accessible, comprehensive, up to date and transparent.
- We empower our communities to collaborate and work together to create an environment where everyone feels safe, engaged, and included.
- High aspirations for employment, independent living, health and community participation are embedded into learning, training curriculums and study programmes, for all young people including those with SEND.
- Young people and their families will receive person centered advice and guidance that empowers them to consider and plan for their life as an adult.
- Young People including those with SEND will enjoy the best possible health and wellbeing.

What we learnt



Relationship based working works!

Co-production on Development Plan

Don't be too ambitious

Ensuring provisions for young people

Listen to feedback

Hosting team in ASC worked better

ASC best placed – applied knowledge of MCA

Time to Reflect



What are you trying to achieve for young people in your area?

What is your vision and priorities?

What obstacles do you anticipate?

What is the difference between how you see things now and how you would like them to be?

Who might be willing to help you?

Audience Questions

